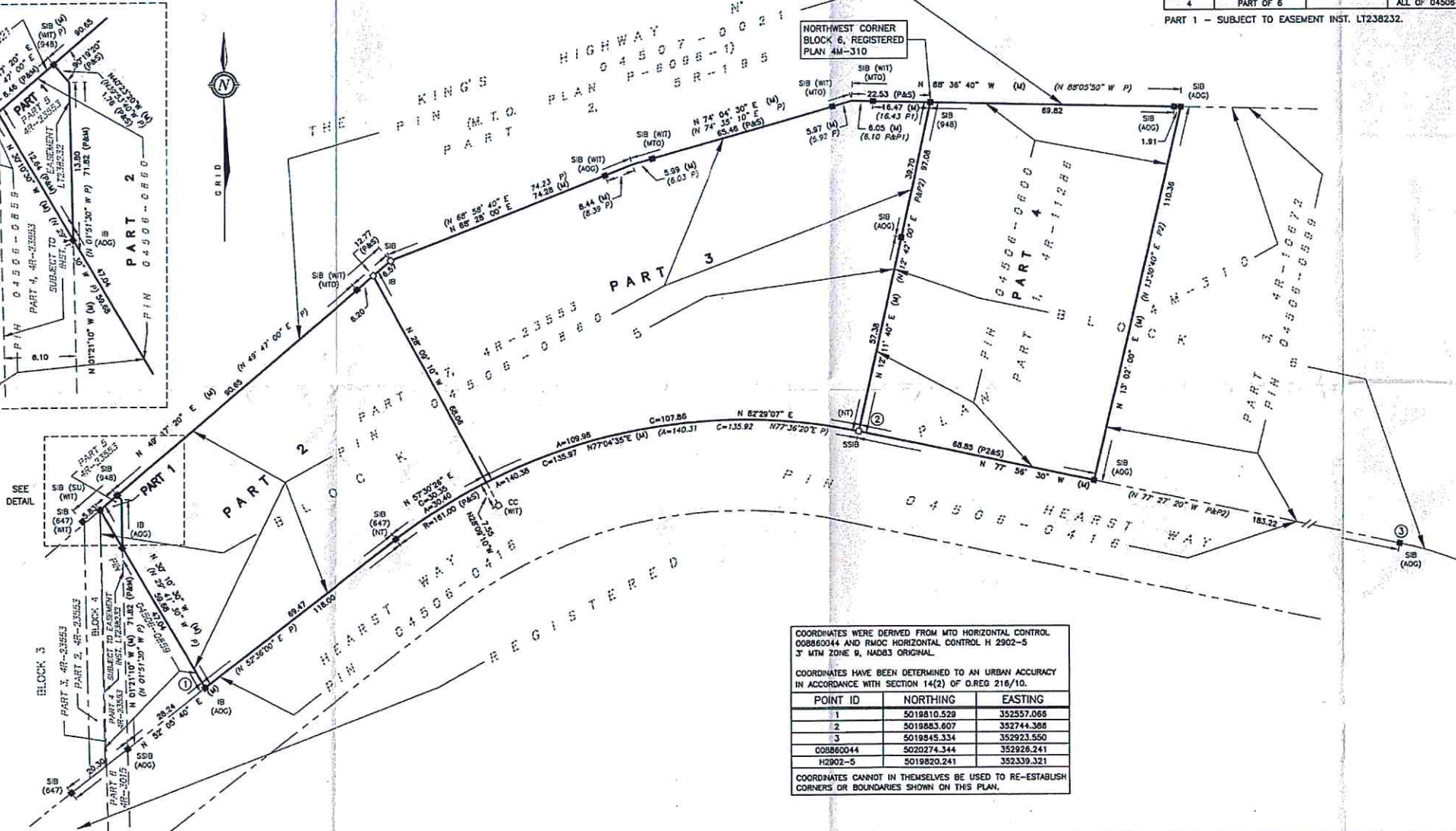
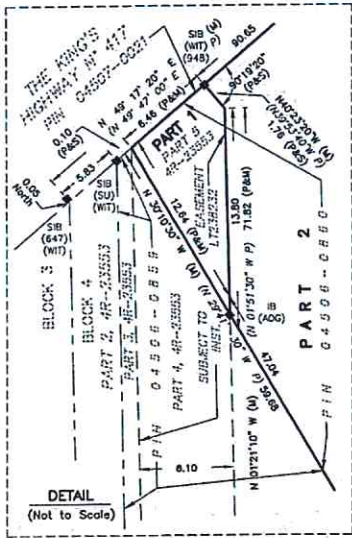


METRIC
DISTANCES AND COORDINATES SHOWN ON THIS PLAN ARE IN METRES
AND CAN BE CONVERTED TO FEET BY DIVIDING BY 0.3048



SCHEDULE			
PART	BLOCK	PLAN	PIN
1			
2	PART OF 5	4M-310	ALL OF 04508-0860
3			
4	PART OF 6		ALL OF 04508-0860

PART 1 - SUBJECT TO EASEMENT INST. LT238232.

I REQUIRE THIS PLAN TO BE DEPOSITED UNDER THE LAND TITLES ACT.

PLAN 4R-27205
RECEIVED AND DEPOSITED

DATE July 22, 2013
DATE July 22/13

H. Robillard
LAND REGISTRAR FOR THE LAND TITLES DIVISION OF OTTAWA - CARLETON (N° 4)

DAVID W. WOODLAND, O.L.S.

PLAN OF SURVEY OF PART OF BLOCKS 5 & 6 REGISTERED PLAN 4M-310 CITY OF OTTAWA

SCALE 1 : 750

FAIRHALL, MOFFATT & WOODLAND LIMITED
ONTARIO LAND SURVEYORS

- NOTES**
- BEARINGS ARE GRID, DERIVED FROM HORIZONTAL CONTROL MONUMENTS MTO 008860044 AND RMOC H 2902-5 AND ARE REFERRED TO THE CENTRAL MERIDIAN, 76°30'W LONGITUDE 3' MTM ZONE 9, NAD83 ORIGINAL.
 - DISTANCES ARE GROUND AND CAN BE CONVERTED TO GRID BY MULTIPLYING BY THE COMBINED SCALE FACTOR 0.999919.

- LEGEND**
- - SURVEY MONUMENT SET (MTO) - MINISTRY OF TRANSPORTATION OF ONTARIO
 - - SURVEY MONUMENT FOUND (SU) - SOURCE UNKNOWN
 - SIB - STANDARD IRON BAR (WIT) - WITNESS
 - SSIB - SHORT STANDARD IRON BAR (NT) - NON TANGENTIAL
 - IB - IRON BAR (PIN) - PROPERTY IDENTIFIER NUMBER
 - CC - CUT CROSS
 - (P) - PLAN 4R-23553
 - (P1) - PLAN 4R-10672
 - (P2) - PLAN 4R-11286
 - (M) - MEASURED
 - (S) - SET
 - (647) - H. R. FARLEY, O.L.S.
 - (948) - H. J. MARTIN, O.L.S.
 - (AOG) - ANNES, O'SULLIVAN, VOLLEBERK LTD. O.L.S.

SURVEYOR'S CERTIFICATE

I CERTIFY THAT:

- THIS SURVEY AND PLAN ARE CORRECT AND IN ACCORDANCE WITH THE SURVEYS ACT, THE SURVEYORS ACT, THE LAND TITLES ACT AND THE REGULATIONS MADE UNDER THEM.
- THE SURVEY WAS COMPLETED ON JULY 11, 2013.

July 22, 2013
DATE

David W. Woodland
DAVID W. WOODLAND
ONTARIO LAND SURVEYOR

COORDINATES WERE DERIVED FROM MTO HORIZONTAL CONTROL 008860044 AND RMOC HORIZONTAL CONTROL H 2902-5 3' MTM ZONE 9, NAD83 ORIGINAL.

COORDINATES HAVE BEEN DETERMINED TO AN URBAN ACCURACY IN ACCORDANCE WITH SECTION 14(2) OF O.REG 216/10.

POINT ID	NORTHING	EASTING
1	5019810.529	352557.096
2	5019883.607	352744.388
3	5019945.334	352923.550
008860044	5020274.344	352926.241
H2902-5	5019820.241	352339.321

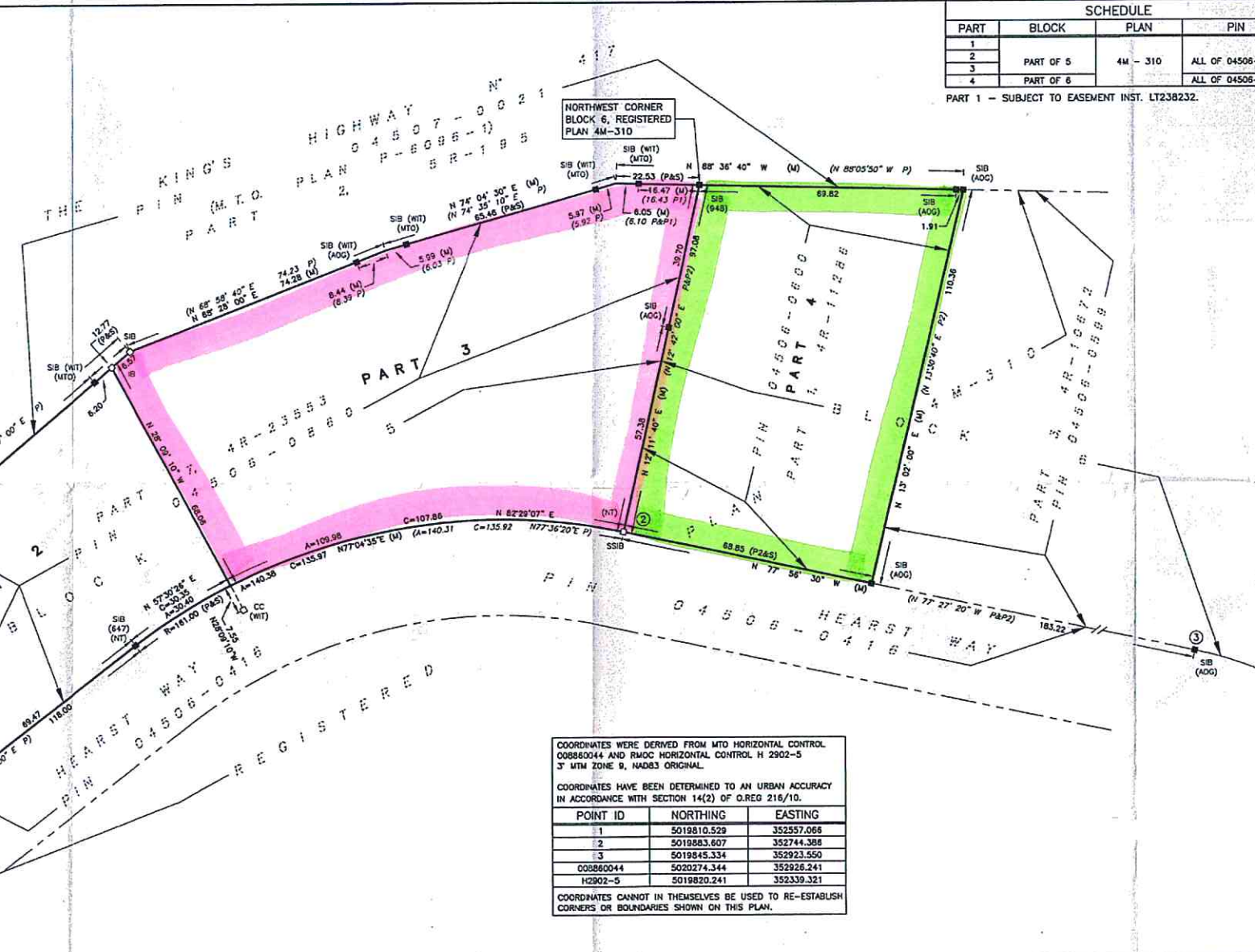
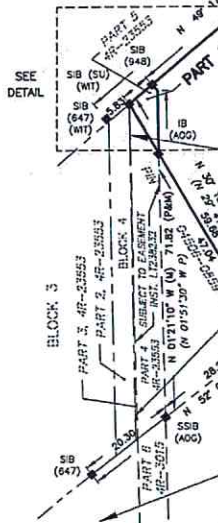
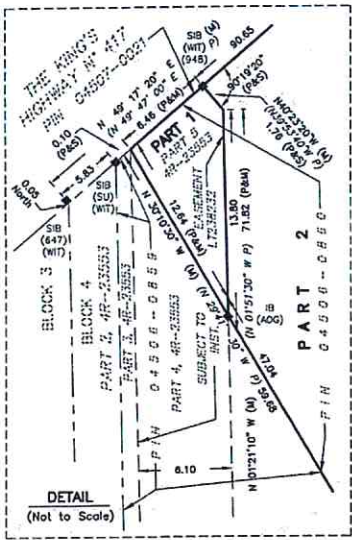
COORDINATES CANNOT IN THEMSELVES BE USED TO RE-ESTABLISH CORNERS OR BOUNDARIES SHOWN ON THIS PLAN.

Fairhall Moffatt & Woodland LIMITED
OTTAWA

Surveying and Land Information Services
100-400 TERRY FOX DRIVE, KANATA, ONTARIO K2L 4R6
TEL: (613) 591-2580 FAX: (613) 591-1495
www.fmw.com

JOB No. K31000
E 352619, N 5019869
REFERENCE No. 7 (c) - M - 310
S:\082\31000\DWG 2013-07-22 RP31DK.DWG (N)

METRIC
DISTANCES AND COORDINATES SHOWN ON THIS PLAN ARE IN METRES
AND CAN BE CONVERTED TO FEET BY DIVIDING BY 0.3048



COORDINATES WERE DERIVED FROM MTO HORIZONTAL CONTROL 008860044 AND RMOC HORIZONTAL CONTROL H 2902-5 3' MTM ZONE 9, NAD83 ORIGINAL.

COORDINATES HAVE BEEN DETERMINED TO AN URBAN ACCURACY IN ACCORDANCE WITH SECTION 14(2) OF O.REG 216/10.

POINT ID	NORTHING	EASTING
1	5019810.529	352557.066
2	5019883.607	352744.388
3	5019845.334	352923.550
008860044	5020274.344	352926.241
H2902-5	5019820.241	352339.321

COORDINATES CANNOT IN THEMSELVES BE USED TO RE-ESTABLISH CORNERS OR BOUNDARIES SHOWN ON THIS PLAN.

SCHEDULE			
PART	BLOCK	PLAN	PIN
1			
2			
3			
4	PART OF 5	4M-310	ALL OF 04506-0860
	PART OF 6		ALL OF 04506-0800

PART 1 - SUBJECT TO EASEMENT INST. LT238232.

I REQUIRE THIS PLAN TO BE DEPOSITED UNDER THE LAND TITLES ACT.

DATE July 22, 2013

DATE July 22/13

H. Robillard
LAND REGISTRAR FOR THE LAND TITLES DIVISION OF OTTAWA - CARLETON (N 4)

DAVID W. WOODLAND, O.L.S.

PLAN OF SURVEY OF PART OF BLOCKS 5 & 6 REGISTERED PLAN 4M-310 CITY OF OTTAWA

SCALE 1 : 750

FAIRHALL, MOFFATT & WOODLAND LIMITED
ONTARIO LAND SURVEYORS

- NOTES**
- BEARINGS ARE GRID, DERIVED FROM HORIZONTAL CONTROL MONUMENTS MTO 008860044 AND RMOC H 2902-5 AND ARE REFERRED TO THE CENTRAL MERIDIAN, 76°30'W LONGITUDE 3' MTM ZONE 9, NAD83 ORIGINAL.
 - DISTANCES ARE GROUND AND CAN BE CONVERTED TO GRID BY MULTIPLYING BY THE COMBINED SCALE FACTOR 0.999919.

- LEGEND**
- - SURVEY MONUMENT SET (MTO) - MINISTRY OF TRANSPORTATION OF ONTARIO
 - - SURVEY MONUMENT FOUND (SU) - SOURCE UNKNOWN
 - SIB - STANDARD IRON BAR (WT) - WITNESS
 - SSIB - SHORT STANDARD IRON BAR (NT) - NON TANGENTIAL
 - IB - IRON BAR (PIN) - PROPERTY IDENTIFIER NUMBER
 - CC - CUT CROSS
 - (P) - PLAN 4R-23553
 - (P1) - PLAN 4R-10672
 - (P2) - PLAN 4R-11286
 - (M) - MEASURED
 - (S) - SET
 - (647) - H. R. FARLEY, O.L.S.
 - (948) - H. J. MARTIN, O.L.S.
 - (AOC) - ANNIS, O'SULLIVAN, VOLLEBECK LTD. O.L.S.

SURVEYOR'S CERTIFICATE

I CERTIFY THAT:

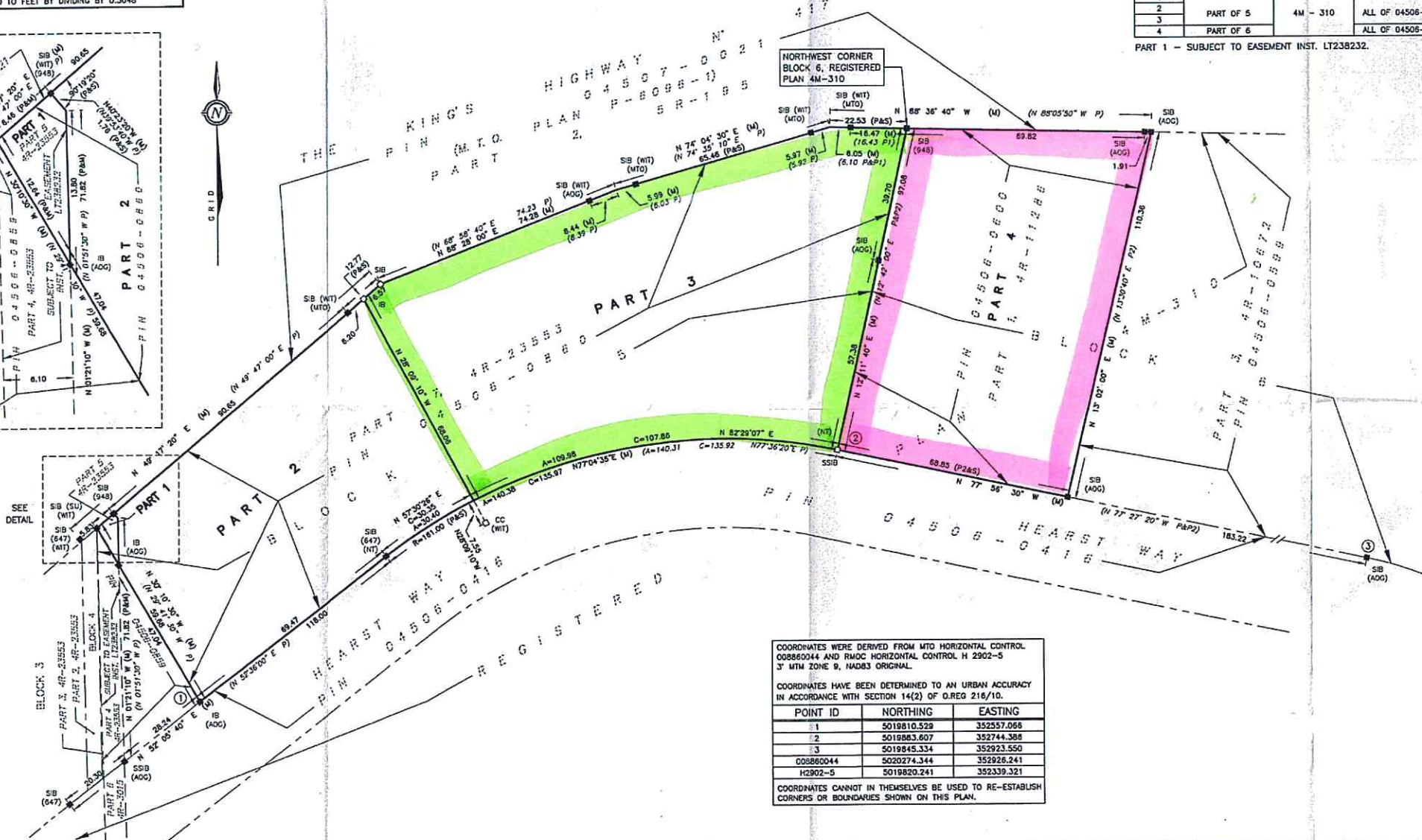
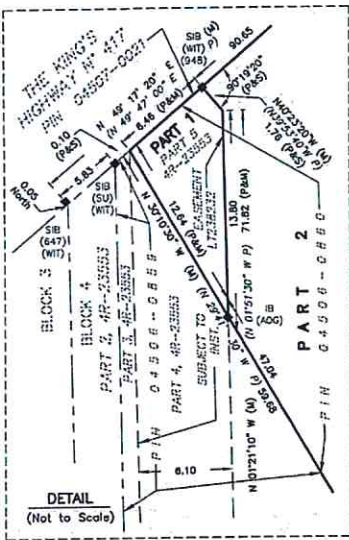
- THIS SURVEY AND PLAN ARE CORRECT AND IN ACCORDANCE WITH THE SURVEY'S ACT, THE SURVEYORS ACT, THE LAND TITLES ACT AND THE REGULATIONS MADE UNDER THEM.
- THE SURVEY WAS COMPLETED ON JULY 11, 2013.

July 22, 2013
DATE

David W. Woodland
DAVID W. WOODLAND
ONTARIO LAND SURVEYOR

Fairhall Moffatt & Woodland LIMITED Ontario Land Surveyors Surveying and Land Information Services 100-600 TERRY FOX DRIVE, KANATA, ONTARIO K2L 4K6 TEL: (613) 591-2580 FAX: (613) 591-1495 www.fmw.com	JOB No. K 31000
	REFERENCE No. E 352619, N 5019869 7 (a) - M - 310 S:\V05\431000\DWCS 2013-07-22 RP310K.DWG (n)

METRIC
DISTANCES AND COORDINATES SHOWN ON THIS PLAN ARE IN METRES
AND CAN BE CONVERTED TO FEET BY DIVIDING BY 0.3048



COORDINATES WERE DERIVED FROM MTO HORIZONTAL CONTROL 008860044 AND RMOC HORIZONTAL CONTROL H 2902-5 3' M TM ZONE 9, NAD83 ORIGINAL.

COORDINATES HAVE BEEN DETERMINED TO AN URBAN ACCURACY IN ACCORDANCE WITH SECTION 14(2) OF O.REG 216/10.

POINT ID	NORTHING	EASTING
1	5019810.529	352557.066
2	5019883.607	352744.388
3	5019845.334	352923.550
008860044	5020274.344	352926.241
H2902-5	5019820.241	352339.321

COORDINATES CANNOT IN THEMSELVES BE USED TO RE-ESTABLISH CORNERS OR BOUNDARIES SHOWN ON THIS PLAN.

SCHEDULE			
PART	BLOCK	PLAN	PIN
1			
2			
3	PART OF 5	4M - 310	ALL OF 04506-0860
4	PART OF 6		ALL OF 04506-0860

PART 1 - SUBJECT TO EASEMENT INST. LT238232.

I REQUIRE THIS PLAN TO BE DEPOSITED UNDER THE LAND TITLES ACT.

DATE July 22, 2013

DATE July 22/13

D. Robillard
LAND REGISTRAR FOR THE LAND TITLES DIVISION OF OTTAWA - CARLETON (N° 4)

PLAN OF SURVEY OF PART OF BLOCKS 5 & 6 REGISTERED PLAN 4M-310 CITY OF OTTAWA

SCALE 1 : 750

FAIRHALL, MOFFATT & WOODLAND LIMITED
ONTARIO LAND SURVEYORS

- NOTES**
- BEARINGS ARE GRID, DERIVED FROM HORIZONTAL CONTROL MONUMENTS MTD 008860044 AND RMOC H 2902-5 AND ARE REFERRED TO THE CENTRAL MERIDIAN, 76°30'W LONGITUDE 3' M TM ZONE 9, NAD83 ORIGINAL.
 - DISTANCES ARE GROUND AND CAN BE CONVERTED TO GRID BY MULTIPLYING BY THE COMBINED SCALE FACTOR 0.9999919.

- LEGEND**
- - SURVEY MONUMENT SET (MTO) - MINISTRY OF TRANSPORTATION OF ONTARIO
 - - SURVEY MONUMENT FOUND
 - SIB - STANDARD IRON BAR (SU) - SOURCE UNKNOWN
 - SSIB - SHORT STANDARD IRON BAR (WT) - WITNESS
 - IB - IRON BAR
 - CC - CUT CROSS
 - (P) - PLAN 4R-23553
 - (P1) - PLAN 4R-10672
 - (P2) - PLAN 4R-11286
 - (M) - MEASURED
 - (S) - SET
 - (647) - H. R. FARLEY, O.L.S.
 - (948) - H. J. MARTIN, O.L.S.
 - (AOC) - ANNIS, O'SULLIVAN, VOLLEBEKK LTD. O.L.S.
 - (NT) - NON TANGENTIAL
 - PIN - PROPERTY IDENTIFIER NUMBER

SURVEYOR'S CERTIFICATE

I CERTIFY THAT:

- THIS SURVEY AND PLAN ARE CORRECT AND IN ACCORDANCE WITH THE SURVEYS ACT, THE SURVEYORS ACT, THE LAND TITLES ACT AND THE REGULATIONS MADE UNDER THEM.
- THE SURVEY WAS COMPLETED ON JULY 11, 2013.

July 22, 2013
DATE

D. Woodland
DAVID W. WOODLAND
ONTARIO LAND SURVEYOR

Fairhall Moffatt & Woodland L I M I T E D ONARIO LAND SURVEYORS Surveying and Land Information Services 100-600 TERRY FOX DRIVE, KANATA, ONTARIO K2L 4K5 TEL: (613) 581-2500 FAX: (613) 581-1495 www.fmw.com	JOB No. K 3 1 0 0 0
	REFERENCE No. 7 (c) - M - 310 S:\URB\431000\DWG 2013-07-22 RP310K.DWG (N)