

SURVEYOR'S REAL PROPERTY REPORT
PART 1 Plan of
LOT 344
REGISTERED PLAN 4M-85
CITY OF OTTAWA
 Surveyed by Annis, O'Sullivan, Vollebæk Ltd.

Scale 1:150

Notes:
 DISTANCES SHOWN ON THIS PLAN ARE IN METERS AND CAN BE CONVERTED TO FEET BY DIVIDING BY 0.3048

Surveyor's Certificate
 I CERTIFY THAT:
 1. The survey and plan are correct and in accordance with the Surveyors Act and the Surveyors Act and the regulations made under them.
 2. The survey was completed on the 13th day of July, 2020.

July 13, 2020

 E. H. Sturges
 Ottawa Land Surveyor

PART 2
 THIS PLAN MUST BE READ IN CONNECTION WITH
 SURVEY REPORT DATED: 2019.05.22

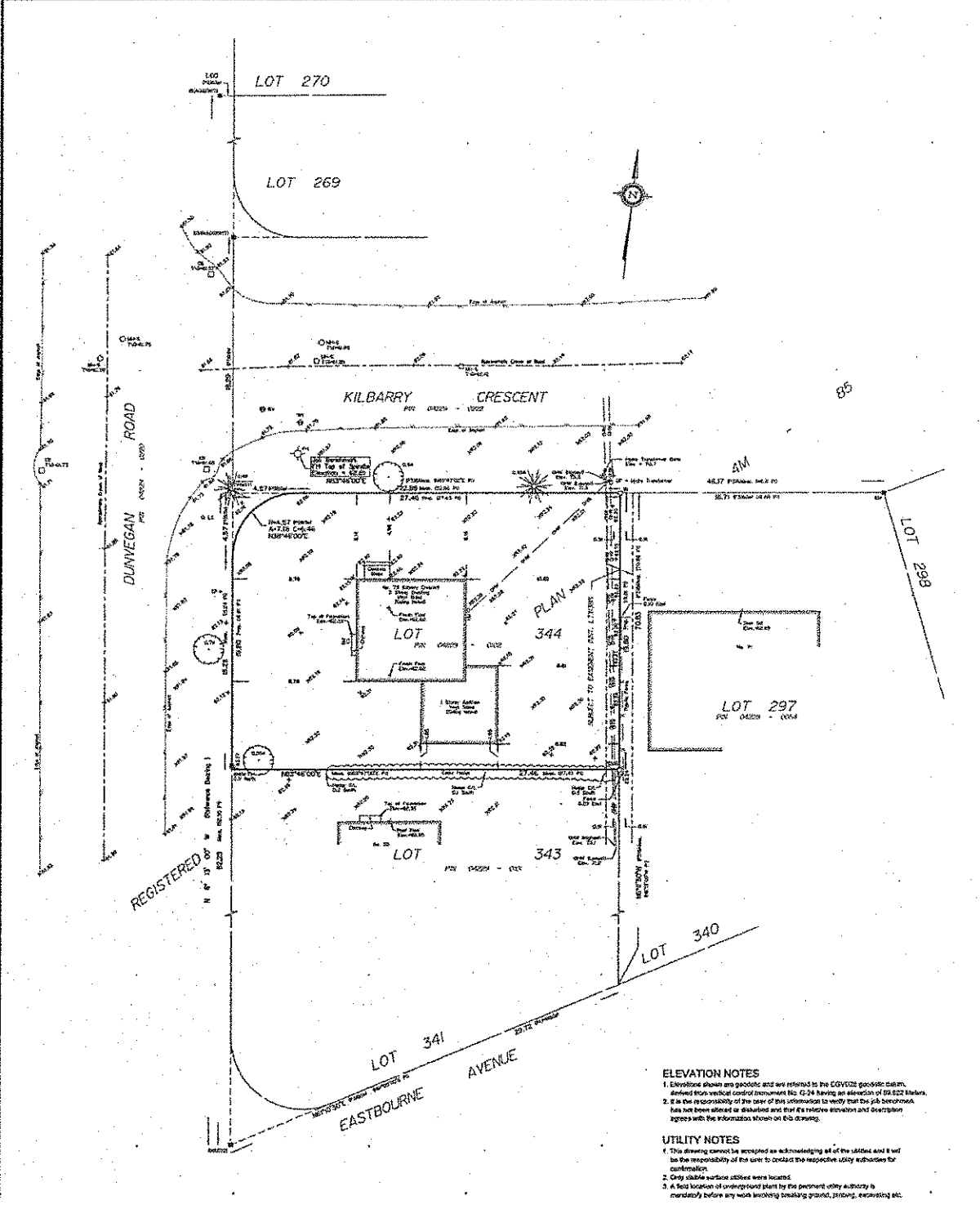
ANNIS, O'SULLIVAN, VOLLEBÆK LTD. draws to:
 1. S.A.D. Files
 2. Plans and other related papers in the Clerk's possession, registered, sealed copies of the Surveyor's Real Property Report in accordance with The Act.

Notes & Legend

Symbol	Description
-D-	Survey Monument Placed
-M-	Survey Monument Found
S/S	Standard Iron Bar
S/S/S	Short Standard Iron Bar
SI	Iron Bar
SI*	Found Iron Bar
W/D	Witness
Mus.	Measurement
(S/S)	Annis, O'Sullivan, Vollebæk Ltd.
PI	Registered Plan M-65
P23	18273 Plan April 24, 2017
P22	18273 Plan April 24, 2017
P21	18273 Plan April 24, 2017
⊙	Electricity Ties
⊙	Concrete Ties
⊙	Concrete Ties
⊙	Maintenance Hole (Storm Sewer)
⊙	Maintenance Hole (Drainage)
⊙	Fire Hydrant
⊙	Water Valve
⊙	Manhole
⊙	Location of Elevations
---	Overhead Wires
⊙	Utility Pole
⊙	Light Standard
⊙	Catch Basin
⊙	Gas Meter
T/C	Top of Curve
⊙	Water Shared Pond

Bearings are grid, derived from Can. Nat. 2016 Real Time Network (RTN) observations, NAD 83 Zone 8 (70°30' West Longitude) NAD 83 (original).

For bearing comparisons, a station of 0°45'00" counter-clockwise was applied to bearings on plan P1 & 0°45'30" counter-clockwise was applied to bearings on plan P2.

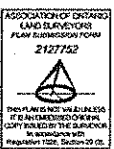


ELEVATION NOTES

- Elevations shown are geoidic and are referred to the CGVD02 geoidic datum, derived from vertical control instrument No. 02-24 having an elevation of 89.822 meters.
- It is the responsibility of the user of this information to verify that the job benchmark has not been affected or disturbed and that its relative elevation and description agrees with the information shown on this drawing.

UTILITY NOTES

- This drawing cannot be accepted as acknowledging all of the utilities and it will be the responsibility of the user to contact the respective utility authorities for confirmation.
- Only visible surface utilities were located.
- A field location of underground plant by the pertinent utility authority is mandatory before any work involving breaking ground, grading, excavating etc.



© Annis, O'Sullivan, Vollebæk Ltd. 2020. THIS PLAN IS PROTECTED BY COPYRIGHT.
ANNIS, O'SULLIVAN, VOLLEBÆK LTD.
 31 Catherine Road, Suite 203
 Ottawa, Ont. K1V 1Y4
 Phone: (613) 721-0520 / Fax: (613) 721-1070
 Email: info@annis-osv.com
 Land Surveyors (O.C. 1922-10) (R.S. 2006) T. 1