

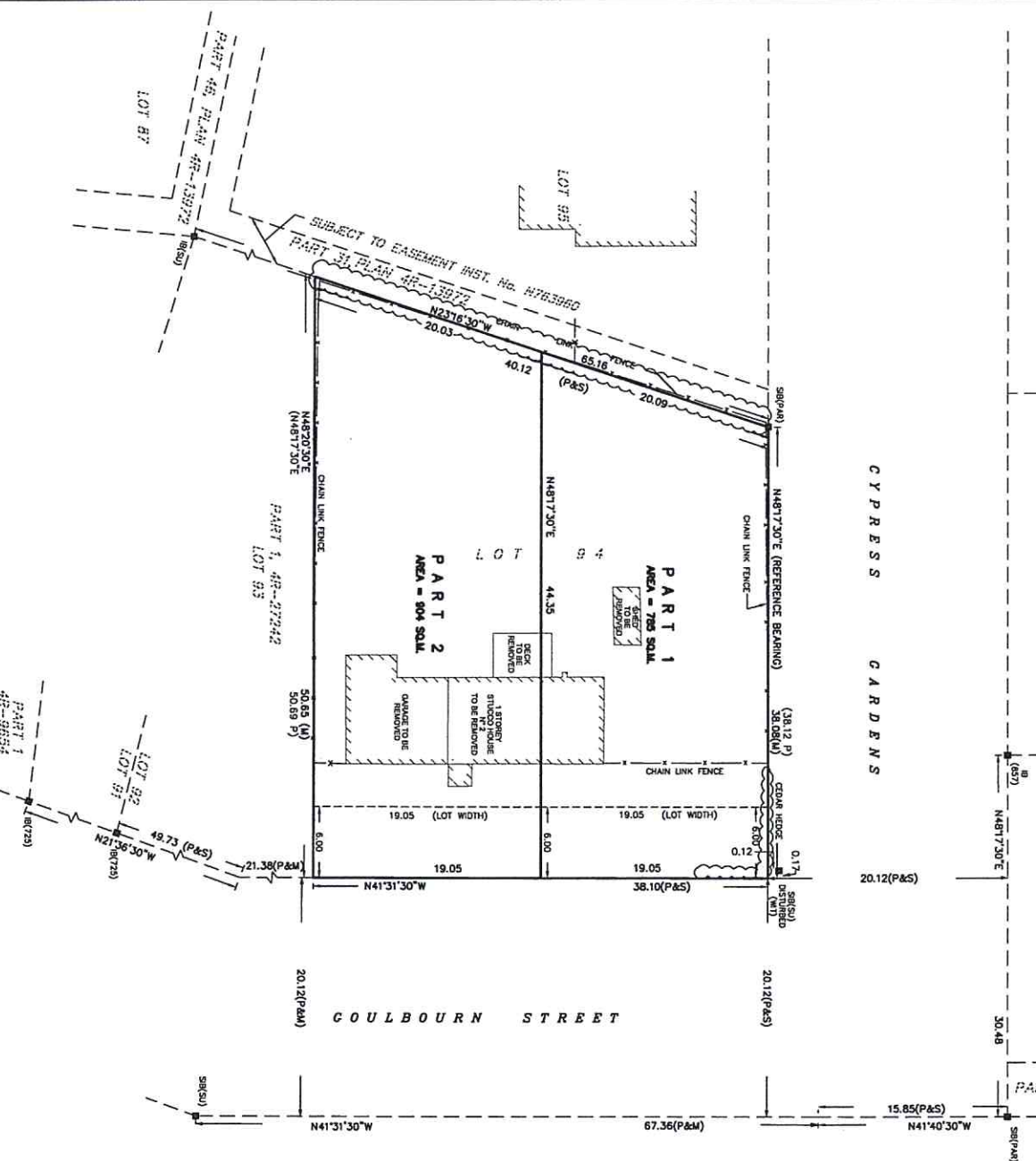
METRIC
DISTANCES AND COORDINATES SHOWN ON THIS PLAN ARE IN METRES AND CAN BE CONVERTED TO FEET BY DIVIDING BY 0.3048

COORDINATES WERE DERIVED FROM REAL TIME NETWORK OBSERVATIONS (SMARTNET) LINK ZONE 9, WAD3 ORIGINAL IN ACCORDANCE WITH SECTION 14(2) OF OREG 218/10.

POINT ID	NORTHING	EASTING
1	*	*
2	*	*
3	*	*
4	*	*
5	*	*
6	*	*
7	*	*
8	*	*
9	*	*
10	*	*
11	*	*
12	*	*
13	*	*
14	*	*
15	*	*
16	*	*
17	*	*
18	*	*
19	*	*
20	*	*
21	*	*
22	*	*
23	*	*
24	*	*
25	*	*
26	*	*
27	*	*
28	*	*
29	*	*
30	*	*
31	*	*
32	*	*
33	*	*
34	*	*
35	*	*
36	*	*
37	*	*
38	*	*
39	*	*
40	*	*
41	*	*
42	*	*
43	*	*
44	*	*
45	*	*
46	*	*
47	*	*
48	*	*
49	*	*
50	*	*
51	*	*
52	*	*
53	*	*
54	*	*
55	*	*
56	*	*
57	*	*
58	*	*
59	*	*
60	*	*
61	*	*
62	*	*
63	*	*
64	*	*
65	*	*
66	*	*
67	*	*
68	*	*
69	*	*
70	*	*
71	*	*
72	*	*
73	*	*
74	*	*
75	*	*
76	*	*
77	*	*
78	*	*
79	*	*
80	*	*
81	*	*
82	*	*
83	*	*
84	*	*
85	*	*
86	*	*
87	*	*
88	*	*
89	*	*
90	*	*
91	*	*
92	*	*
93	*	*
94	*	*
95	*	*
96	*	*
97	*	*
98	*	*
99	*	*
100	*	*

COORDINATES CANNOT IN THEMSELVES BE USED TO RE-ESTABLISH CORNERS OR BOUNDARIES SHOWN ON THIS PLAN.

SCHEDULE			PIN
PART	LOT	PLAN	
1	94	733	
2			



I REQUIRE THIS PLAN TO BE DEPOSITED UNDER THE LAND TITLES ACT.

DATE _____

FOR REGISTRATION FOR THE LAND REGISTRY FOR THE LAND TITLES DIVISION OF OTTAWA - CARLETON (R 4)

JOHN H. GUTRI, O.L.S.

PLAN OF SURVEY OF
LOT 94
REGISTERED PLAN 733
CITY OF OTTAWA

SCALE 1:250

0 5 10 20 25 metres

FAIRHALL, MOFFATT & WOODLAND LIMITED
ONTARIO LAND SURVEYORS

- NOTES**
- BEARINGS ARE ASTRONOMIC AND ARE REFERRED TO THE SOUTHEASTERNLY LIMIT OF CYPRESS GARDENS AS SHOWN ON REGISTERED PLAN NO. 733, HAVING A BEARING OF N4817'30"E.
 - DISTANCES ARE GROUND AND CAN BE CONVERTED TO GRID BY MULTIPLYING BY THE COMBINED SCALE FACTOR *****.
- LEGEND**
- SURVEY MONUMENT SET
 - SURVEY MONUMENT FOUND
 - SB - STANDARD IRON BAR
 - SSB - SHORT STANDARD IRON BAR
 - B - IRON BAR
 - (P) - REGISTERED PLAN NO. 733
 - (S) - SET
 - (M) - MEASURED
 - (657) - FAIRHALL, MOFFATT & WOODLAND LIMITED, O.L.S.
 - (P48) - PAUL A. ROODELL LTD., O.L.S.
 - (725) - ANNETT, KENNEDY, ROODELL & JASON, O.L.S.
 - (SU) - SOURCE UNKNOWN
 - (W1) - WITNESS
 - C/L - CONTINUED

Committee of Adjustment
FEB 04 2021
City of Ottawa

DRAFT REFERENCE PLAN OF ADJUSTMENT PREPARED FOR COMMITTEE OF ADJUSTMENT'S SEPTEMBER 15, 2020

SURVEYOR'S CERTIFICATE

I CERTIFY THAT:
1. THIS SURVEY AND PLAN ARE CORRECT AND IN ACCORDANCE WITH THE SURVEYS ACT, THE SURVEYORS ACT, THE LAND TITLES ACT AND THE REGULATIONS MADE UNDER THEM.
2. THE SURVEY WAS COMPLETED ON _____

DATE _____

JOHN H. GUTRI
ONTARIO LAND SURVEYOR

Fairhall Moffatt & Woodland

Professional Land Information Services
OTTAWA

1100-600 BURNHAMTHORPE DRIVE EAST, OTTAWA ON K1H 8S6
TEL: (613) 947-2500 FAX: (613) 947-1185

5355 KENNEDY ROAD, OTTAWA ON K2V 3P1
Tel: (613) 947-2500 FAX: (613) 947-1185

JOB No.	W 4 0 8 0 0
REFERENCE No.	E . N
DATE	30-7-21

