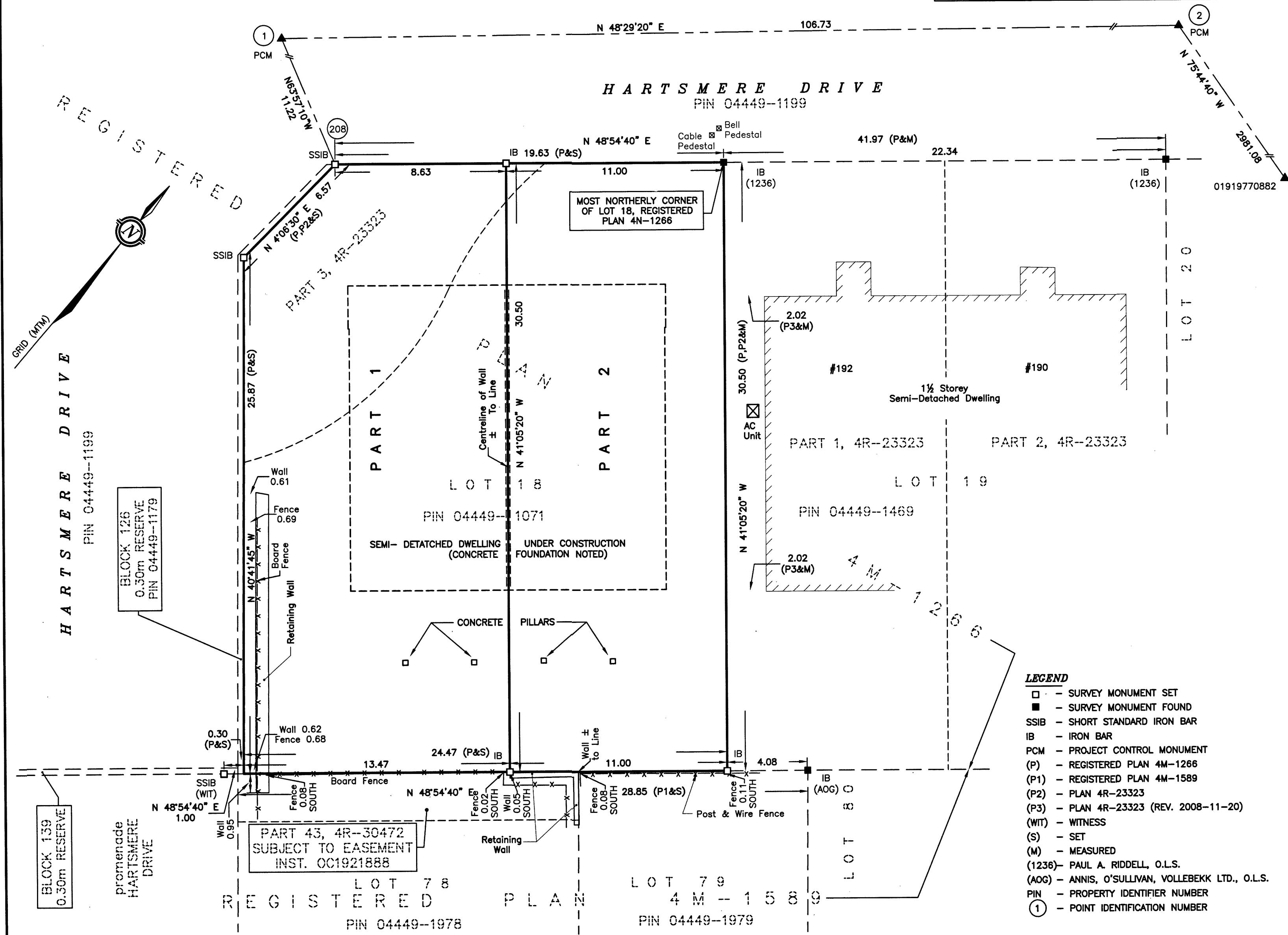


METRIC
 DISTANCES AND COORDINATES SHOWN ON THIS PLAN ARE IN METRES
 AND CAN BE CONVERTED TO FEET BY DIVIDING BY 0.3048

SCHEDULE			
PART	LOT	PLAN	PIN
1	ALL OF 18	4M-1266	ALL OF 04449-1071
2			

I REQUIRE THIS PLAN TO BE DEPOSITED UNDER THE LAND TITLES ACT.
 DATE 2020/09/16
 JOHN H. GUTRI, O.L.S.

PLAN 4R-33106
 RECEIVED AND DEPOSITED
 DATE September 18, 2020
 "J. Hansen"
 REPRESENTATIVE FOR
 LAND REGISTRAR FOR THE
 LAND TITLES DIVISION OF
 OTTAWA - CARLETON (N° 4)



**PLAN OF SURVEY OF
 LOT 18
 REGISTERED PLAN 4M-1266
 CITY OF OTTAWA**
 SCALE 1 : 150
 0 1 2 5 10 15 metres
FAIRHALL, MOFFATT & WOODLAND LIMITED
 ONTARIO LAND SURVEYORS

- NOTES**
- BEARINGS ARE GRID, DERIVED FROM OBSERVED REFERENCE POINTS ① AND ② BY REAL TIME NETWORK OBSERVATIONS AND ARE REFERRED TO THE CENTRAL MERIDIAN, 76°30'W LONGITUDE MTM ZONE 9, (NAD83 ORIGINAL).
 - DISTANCES ARE GROUND AND CAN BE CONVERTED TO GRID BY MULTIPLYING BY THE COMBINED SCALE FACTOR 0.999913.
 - ALTERNATE AND REDUCED LENGTH MONUMENTS SET DUE TO UNDERGROUND UTILITY HAZARD.

COORDINATES WERE DERIVED FROM REAL TIME NETWORK OBSERVATIONS (SMARTNET) MTM ZONE 9, NAD83 ORIGINAL.
 COORDINATES HAVE BEEN DETERMINED TO AN URBAN ACCURACY IN ACCORDANCE WITH SECTION 14(2) OF O.REG 216/10.

POINT ID	NORTHING	EASTING
1	5011679.12	351028.98
2	5011749.86	351108.91
208	5011674.20	351039.07
01919770882	5011015.83	353998.21

COORDINATES CANNOT IN THEMSELVES BE USED TO RE-ESTABLISH CORNERS OR BOUNDARIES SHOWN ON THIS PLAN.

SURVEYOR'S CERTIFICATE
 I CERTIFY THAT:
 1. THIS SURVEY AND PLAN ARE CORRECT AND IN ACCORDANCE WITH THE SURVEYS ACT, THE SURVEYORS ACT, THE LAND TITLES ACT AND THE REGULATIONS MADE UNDER THEM.
 2. THE SURVEY WAS COMPLETED ON AUGUST 18, 2020.
 DATE 2020/09/16
 JOHN H. GUTRI
 ONTARIO LAND SURVEYOR

- LEGEND**
- - SURVEY MONUMENT SET
 - - SURVEY MONUMENT FOUND
 - SSIB - SHORT STANDARD IRON BAR
 - IB - IRON BAR
 - PCM - PROJECT CONTROL MONUMENT
 - (P) - REGISTERED PLAN 4M-1266
 - (P1) - REGISTERED PLAN 4M-1589
 - (P2) - PLAN 4R-23323
 - (P3) - PLAN 4R-23323 (REV. 2008-11-20)
 - (WIT) - WITNESS
 - (S) - SET
 - (M) - MEASURED
 - (1236) - PAUL A. RIDDELL, O.L.S.
 - (AOG) - ANNIS, O'SULLIVAN, VOLLEBEKK LTD., O.L.S.
 - PIN - PROPERTY IDENTIFIER NUMBER
 - ① - POINT IDENTIFICATION NUMBER

**Fairhall
 Moffatt &
 Woodland**
 LIMITED
 ONTARIO LAND SURVEYORS
 OTTAWA
 Surveying and Land Information Services
 100-600 TERRY FOX DRIVE, KANATA, ONTARIO K2L 4B6
 TEL: (613) 591-2580 FAX: (613) 591-1495
 www.fmw.on.ca

Job No. Z 3 7 6 0 0
 E 351052, N 5011671
 Reference No. 2 - 4M-1266
 Drawing Name S:\JOBS\237600\DWGS 2020-09-14 rp376z.dwg (kb)