

Committee of Adjustment

DEC 07 2010

City of Ottawa

1. REQUIRE THIS PLAN TO BE DEPOSITED UNDER THE LAND TITLES ACT DATE: \_\_\_\_\_

PLAN 4R- RECEIVED AND DEPOSITED DATE: \_\_\_\_\_

2. NETWORK REPRESENTATIVE FOR THE LAND TITLES DIVISION OF OTTAWA/CARLETON 13, 14

SCHEDULE			
PART	LOT	CONCESSION	PN
1	PART OF 21	1	PART OF 04561-0042

DRAFT PLAN OF SURVEY OF  
 PART OF LOT 21  
 CONCESSION 1  
 GEOGRAPHIC TOWNSHIP OF  
 TORBOLTON  
 CITY OF OTTAWA  
 Surveyed by Annis, O'Sullivan, Vollebek Ltd.

Metrics  
 DIMENSIONS AND COORDINATES SHOWN ON THIS PLAN ARE IN METRES AND CAN BE CONVERTED TO FEET BY DIVIDING BY 0.3048.



Surveyor's Certificate  
 I CERTIFY THAT:  
 1. This survey and plan are correct and in accordance with the Survey Act, 2001 Surveyors Act and the Land Titles Act and the regulations made under them.  
 2. The survey was completed on the \_\_\_\_ day of \_\_\_\_\_ 2010.

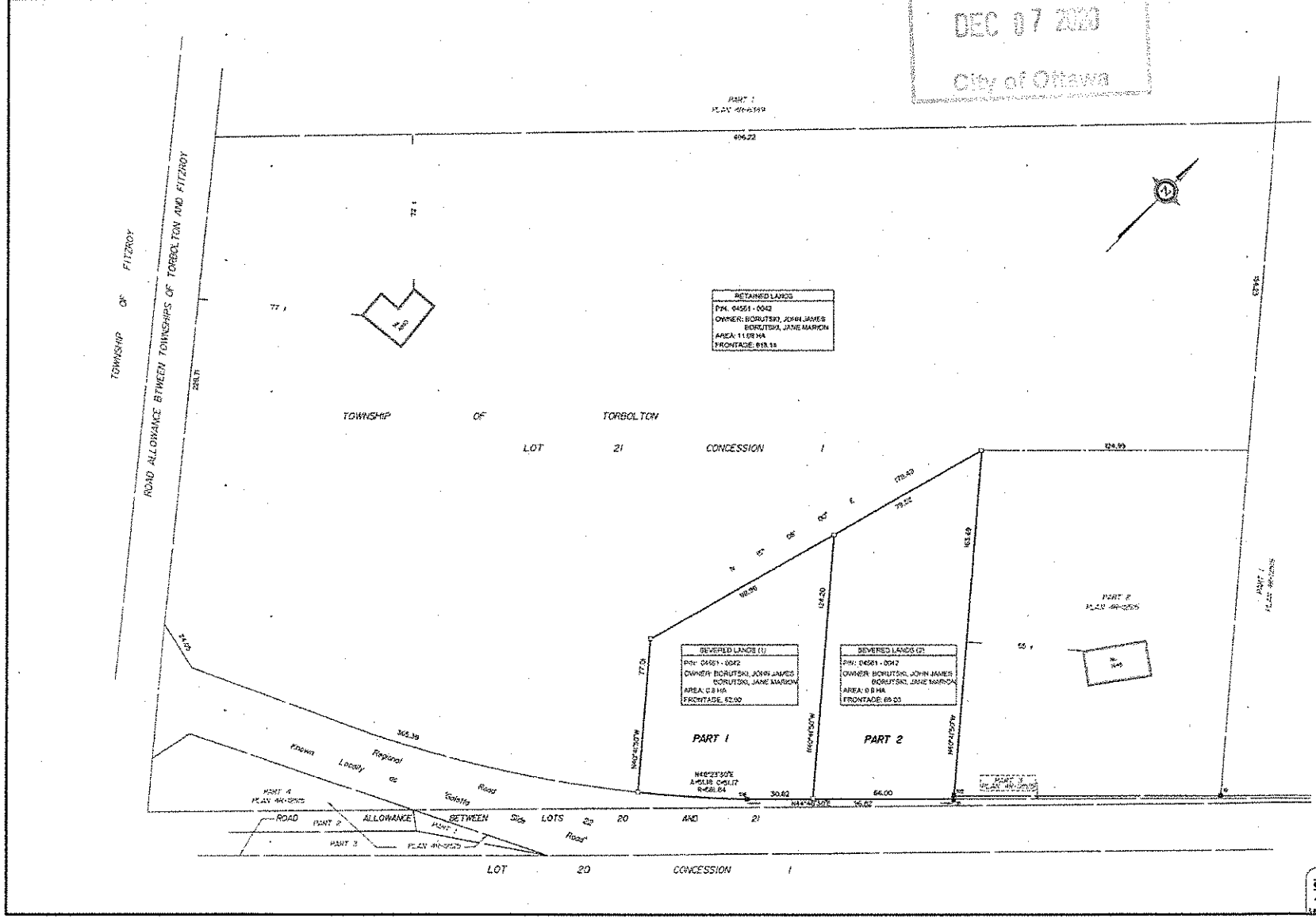
State: \_\_\_\_\_  
 T. Network: Ontario Land Surveyor

- Notes & Legend
- +— Details: Survey Monuments Plotted
  - Survey Monument Found
  - B— Standard Iron Bar
  - S— Short Concealed Iron Bar
  - E— Iron Pipe
  - (V)— V-Plate
  - (A)— Annealed
  - (P)— Pipe

Readings are grid, derived from CanMet 2010 Real Time Network GPS observations and are referenced to Specific Control Points 01916876502 and 01918781055, MTR Zone 18, NAD 83, WGS 84, UTM Zone 18, NAD 83 (Original).

01916876502 Northing: 5028651.23 Easting: 318142.95  
 01918781054 Northing: 5028120.31 Easting: 343029.90

ANNIS, O'SULLIVAN, VOLLEBEK LTD.  
 14 Concession One, Suite 200  
 Ottawa, Ont. K2E 2S9  
 Phone: (613) 727-8850 / Fax: (613) 727-0370  
 Email: annis@annisvollebek.com  
 Web: www.annisvollebek.com



This plan is a reproduction of the original plan filed in the Land Titles Office of the City of Ottawa. It is not a certified copy and should not be used for legal purposes.