

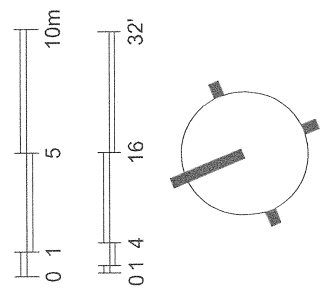
Committee
of Adjustment
NOV 16 2020
City of Ottawa

RND Construction Ltd

2111 Balmoral Place

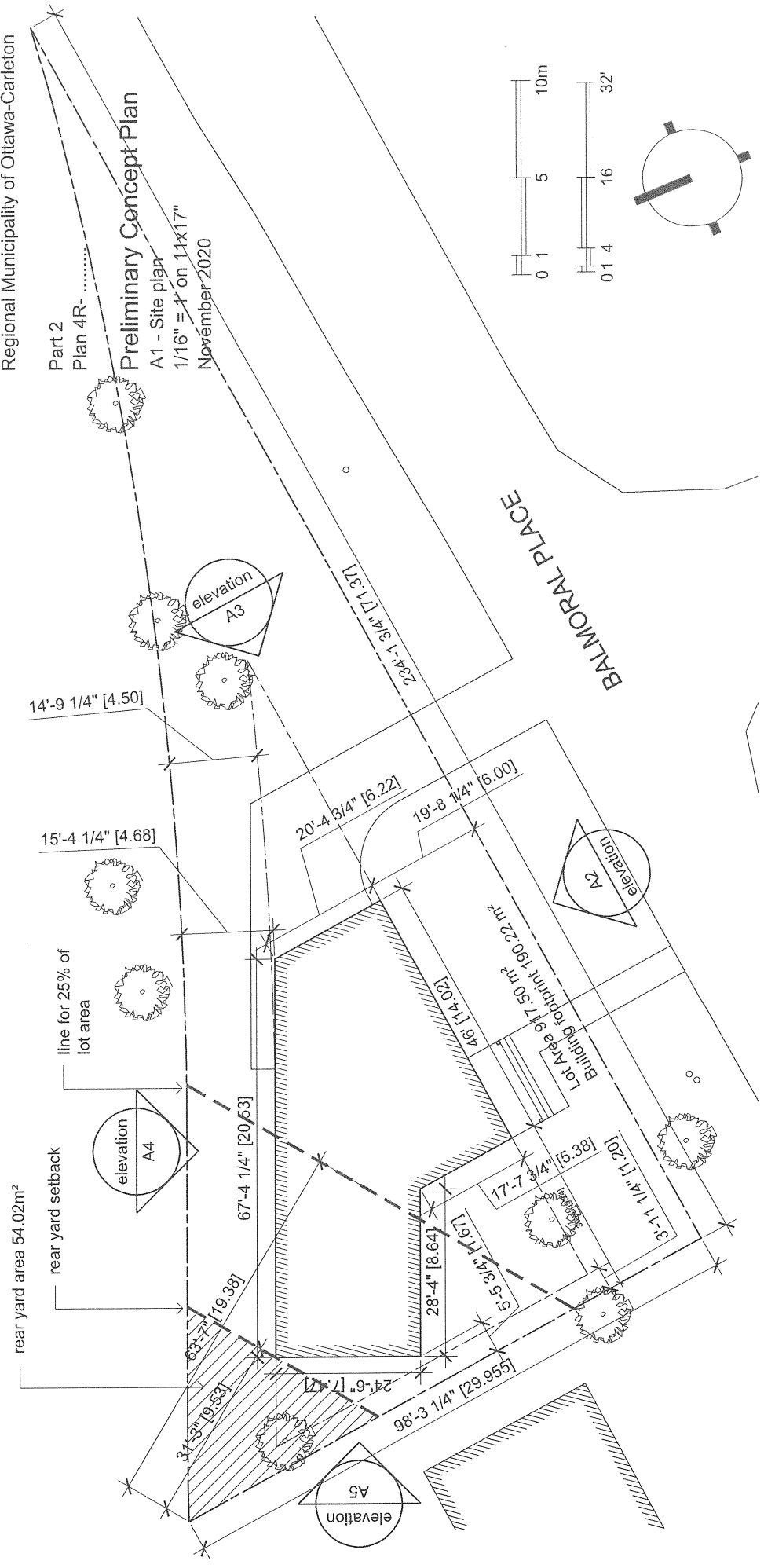
Part of Lot 15
Junction Gore
Geographic Township of Gloucester
Now in the City of Ottawa
Regional Municipality of Ottawa-Carleton

Part 2
Plan 4R-
Preliminary Concept Plan
A1 - Site plan
1/16" = 1' on 11x17"
November 2020



SMYTH ROAD

BALMORAL PLACE



RND Construction ltd

211 Balmoral Place

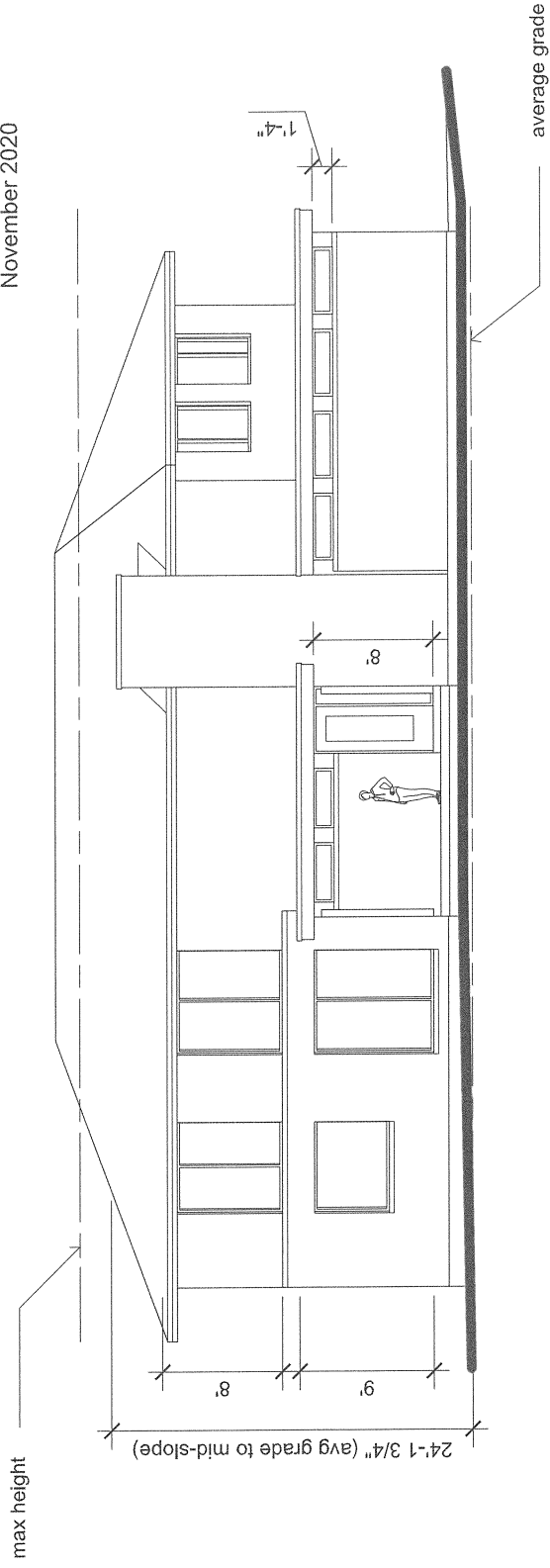
Part of Lot 15
Junction Gore
Geographic Township of Gloucester
Now in the City of Ottawa
Regional Municipality of Ottawa-Carleton

Part 2
Plan 4R-

Preliminary Concept Plan

A2 - front elevation
1/8" = 1' on 11x17"
November 2020

**Committee
of Adjustment
NOV 16 2020
City of Ottawa**



RND Construction ltd

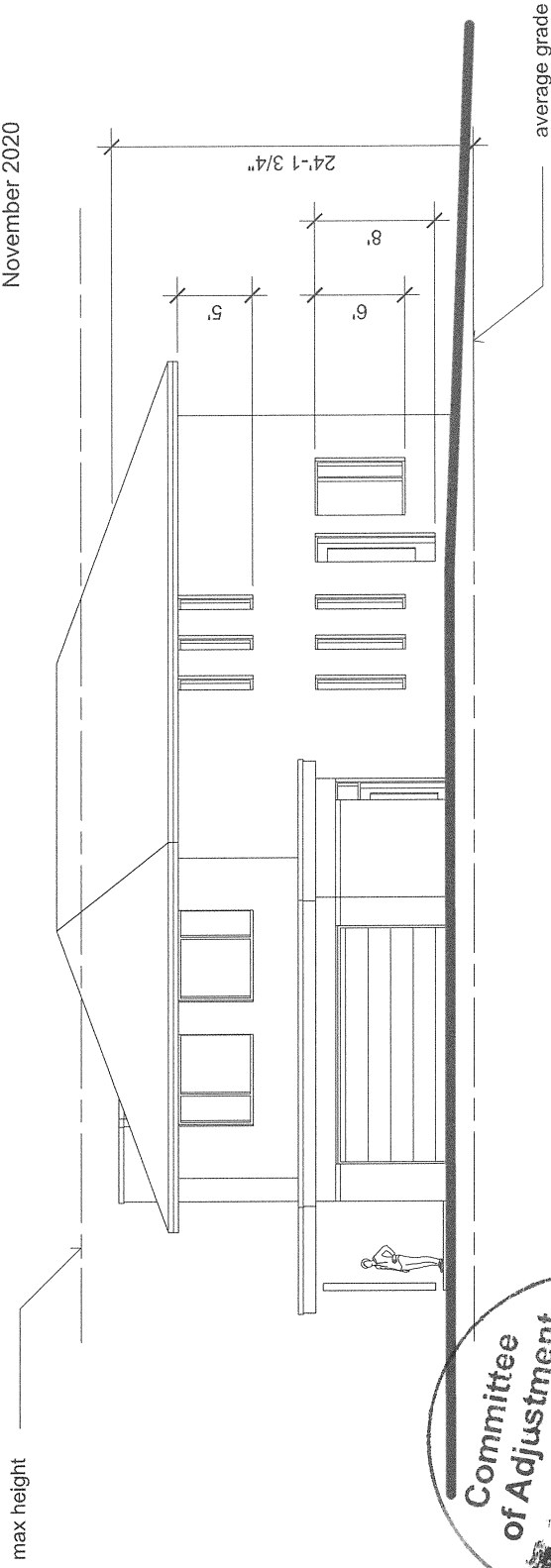
211 Balmoral Place

Part of Lot 15
Junction Gore
Geographic Township of Gloucester
Now in the City of Ottawa
Regional Municipality of Ottawa-Carleton

Part 2
Plan 4R-

Preliminary Concept Plan

A3 - right side elevation
1/8" = 1' on 11x17"
November 2020



Committee
of Adjustment
NOV 16 2020
City of Ottawa

RND Construction Ltd

211 Balmoral Place

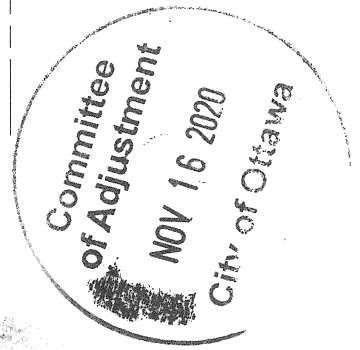
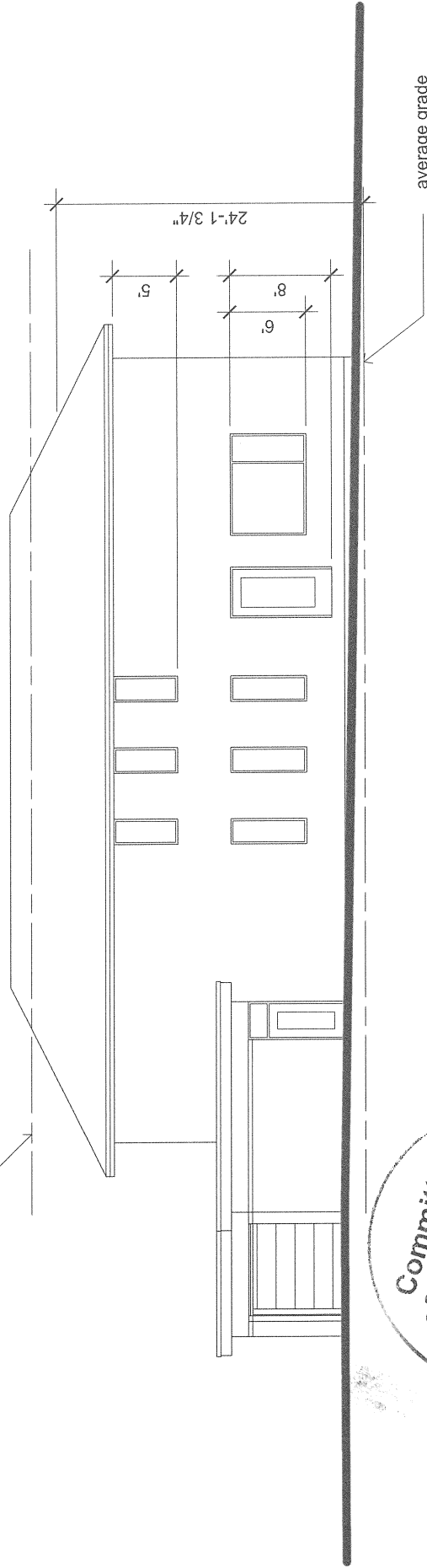
Part of Lot 15
Junction Gore
Geographic Township of Gloucester
Now in the City of Ottawa
Regional Municipality of Ottawa-Carleton

Part 2
Plan 4R-

Preliminary Concept Plan

A4 - back elevation
1/8" = 1' on 11x17"
November 2020

max height



RND Construction ltd

211 Balmoral Place

Part of Lot 15
Junction Gore
Geographic Township of Gloucester
Now in the City of Ottawa
Regional Municipality of Ottawa-Carleton

Part 2
Plan 4R-

Preliminary Concept Plan

A5 - left side elevation
1/8" = 1' on 11x17"
November 2020

