

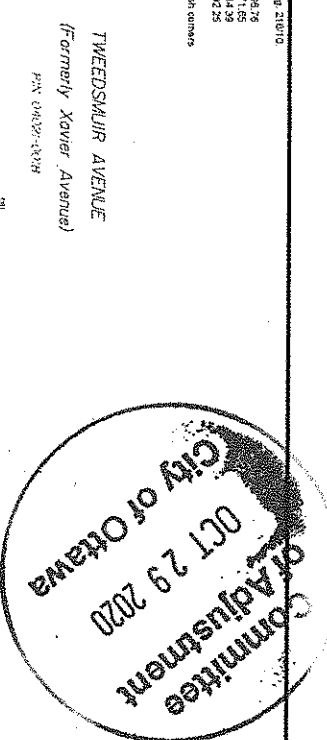
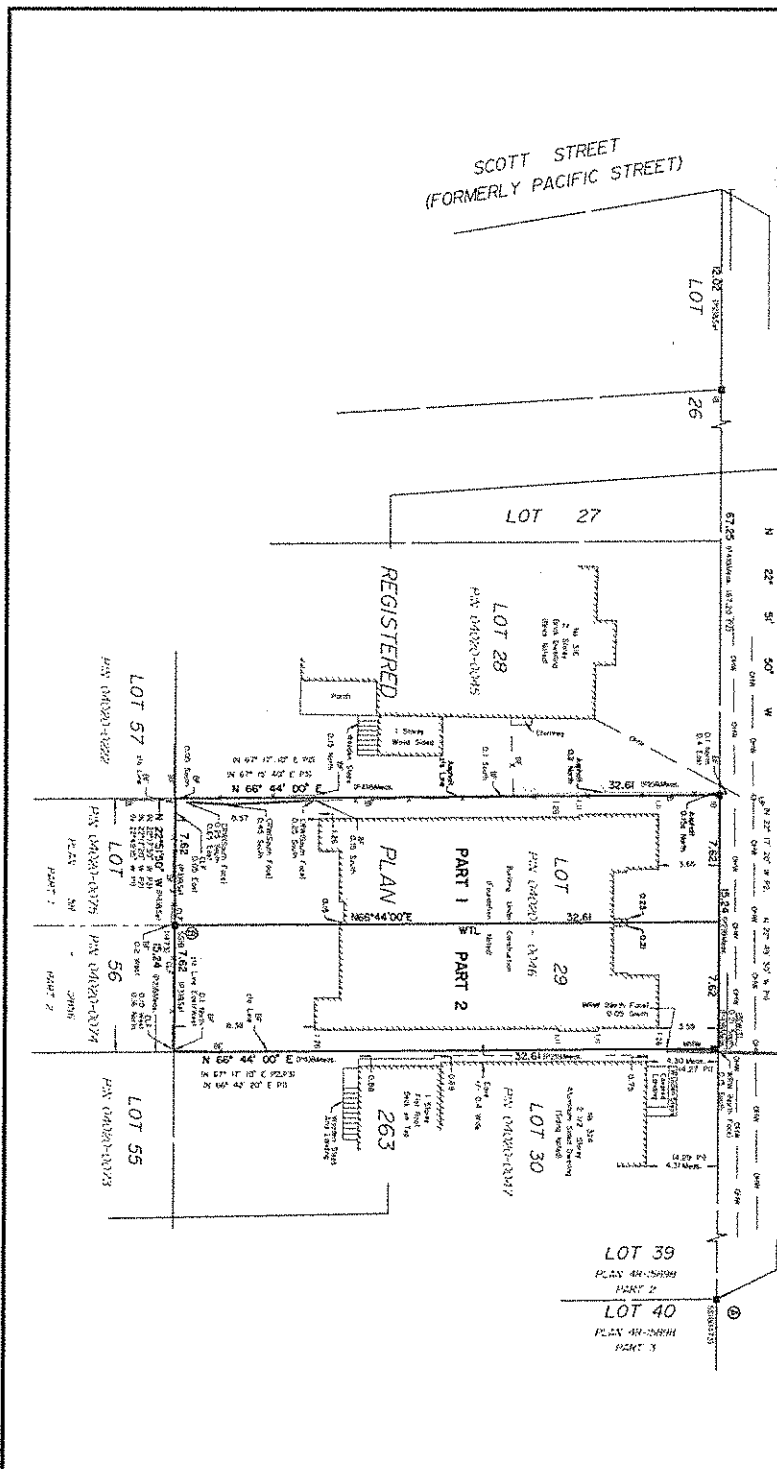
Distances shown on this plan are ground distances and can be converted to grid distances by multiplying by the constant scale factor of 0.99934. Bearings are true, derived from CANMET 2018 Real Time Network GPS observations on reference points A and B, known heights and are referenced to Special Control Points 0191980005 and 0191980102, ATN Zone 91. Post A: 79° 53' 00.00" (Longitude) 45° 00' (Latitude). Post B: 79° 53' 00.00" (Longitude) 45° 00' (Latitude).

For Completion Purposes Bearings on Plan P1/P2/P3 are Azimuthic. Coordinates are derived from CANMET 2018 Real Time Network GPS observations referenced to Special Control Points 0191980005 and 0191980102, ATN Zone 91 (79° 53' 00.00" West Longitude, 45° 00' (Latitude)).

Coordinate values are to urban accuracy in accordance with O. Reg. 216/10

- 0191980005 Northing: 5027191.26 Easting: 381498.76  
 - 0191980105 Northing: 5028591.43 Easting: 381498.76  
 - Point A Northing: 5028591.43 Easting: 381498.76  
 - Point B Northing: 5028591.00 Easting: 381498.25

Caution: Coordinates cannot, in themselves, be used to re-establish corners of boundaries shown on this plan.



AREA	PART	LOT	PLAN	PIN
263	1	ALL OF 29	263	ALL OF 0420-0406
263	2			

REGISTER THIS PLAN TO BE LOST BY THE SURVEYOR AND DEPOSITED DATE: \_\_\_\_\_

REGISTERED AND DEPOSITED DATE: \_\_\_\_\_

REGISTERED FOR THE LAND TITLES DIVISION OF THE OTTAWA GAZETTER NO. 4

**DRAFT PLAN OF SURVEY OF LOT 29 REGISTERED PLAN 263 CITY OF OTTAWA**  
 Surveyed by Annis, O'Sullivan, Vollebek Ltd.

Scale 1:200  
 0 1 2 3 4 5 6 7 8 9 10 METERS

**MAINING**  
 DISTANCES AND COORDINATES SHOWN ON THIS PLAN ARE IN METERS AND CAN BE CONVERTED TO FEET BY DIVIDING BY 0.3048.

**Surveyor's Certificate**

"I CERTIFY THAT I read this proposal and in accordance with the Statute in force in Ontario have made the necessary measurements and calculations and have made the same under oath. This survey was completed on the day of September, 2020.

**Notes & Legend**

- Survey Monument Found
- Survey Monument Found
- SMB Standard Iron Bar
- S8B Short Standard Iron Bar
- IB Iron Bar
- (W/T) Witness
- Mens Measured
- (A/O) As Shown, Verbal/Text
- P7 Registered Plan 833
- P11 (A/O) Plan January 25, 1988
- P21 (A/O) Plan April 27, 1990
- P33 Part 561 (2006)
- P41 (A/O) Plan May 31, 2016
- o/v Other
- Dully Pole
- BF Board Fence
- CLF Chain Link Fence
- CRW Concrete Retaining Wall
- WHP Wood Panel Retaining Wall
- WTL Wire
- Centers of Way +/- is Line

ANNIS, O'SULLIVAN, VOLLEBEK LTD.  
 1000 SHEPPARD AVENUE EAST, SUITE 100  
 SCARBOROUGH, ONTARIO M1S 1T2  
 Phone: (416) 291-0829 Fax: (416) 291-0193  
 E-mail: info@aosllv.com