

ROAD ALLOWANCE BETWEEN CONCESSIONS 2 AND 3 (OTTAWA FRONT)
(FORMERLY KNOWN AS REGIONAL ROAD No. 30)
(FINES)

PLAN 4R--
RECEIVED AND DEPOSITED
DATE _____
J.P. SHIPMAN
REPRESENTATIVE FOR THE
LAND TITLES DIVISION OF
OTTAWA-CARLETON (No. 4)

PLAN OF SURVEY OF
PART OF LOT 6
CONCESSION 3 (OTTAWA FRONT)
GEOGRAPHIC TOWNSHIP OF GLOUCESTER
CITY OF OTTAWA
SCALE 1:150



PART	LOT	CON.	P.L.N.	AREA (m ²)
1	6	3	ALL OF 04405-0240	396.1
2				370.3
3				388.5
4				3.1
5				3.0
6				3.0

METRIC
DISTANCES AND COORDINATES SHOWN ON THIS PLAN ARE IN METRES AND CAN BE CONVERTED TO FEET BY DIVIDING BY 0.3048

NOTES
BEARINGS SHOWN ON THIS PLAN ARE GRID BEARINGS, AND ARE DERIVED FROM THE 1984 NAD 83 DATUM PLACE AS SHOWN ON PLAN 4R-20700. HAVING A BEARING OF 1082440.2.
DISTANCES SHOWN ON THIS PLAN ARE HORIZONTAL GROUND DISTANCES AND NOT DISTANCES MEASURED BY THE SURVEYOR.
SCALE FACTOR OF 0.99980

SSLB (A00) DENOTES 0.05 SD, 1.3 LONG STANDARD IRON BAR
S.S.L.B. DENOTES 0.05 SD, 1.3 LONG STANDARD IRON BAR
R.I.B. DENOTES 0.05 SD, 0.6 LONG IRON BAR
R.O.I.B. DENOTES ROUND IRON BAR
P.F. DENOTES PLAIN FINISHED
D DENOTES SURVEY MONUMENT PLANTED
W.T. DENOTES WITNESS
D.S. DENOTES D.I. BARNES, O.L.S.
P.T. DENOTES P.L. 4R-32070
P.T. DENOTES P.L. 4R-32070
M DENOTES MEASURED
S DENOTES SET

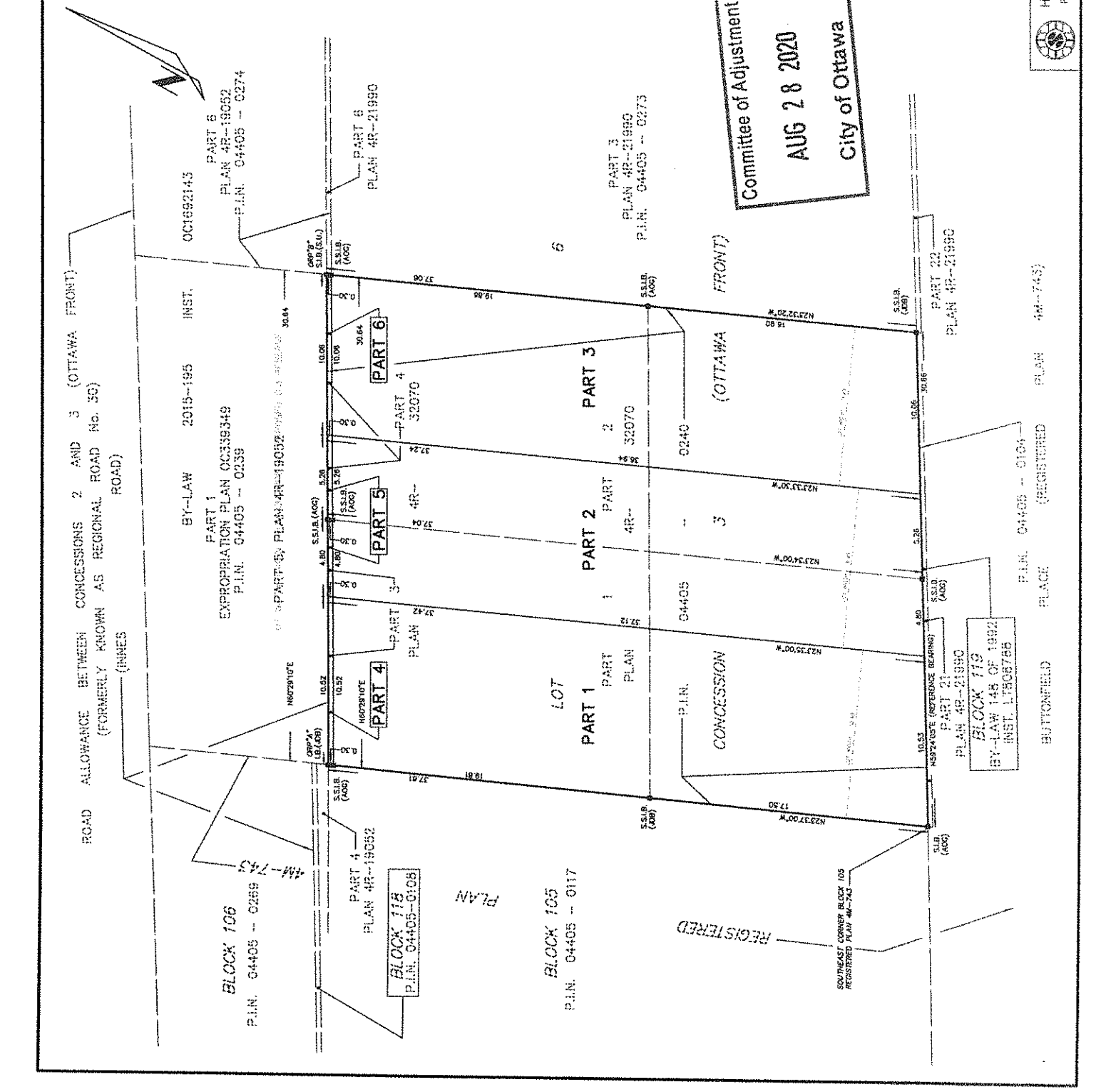
POINT IDENTIFICATION	NORTHING	EASTING
CRP A	5534397.87	308668.93
CRP B	5534397.87	308668.93

OBSERVED REFERENCE POINTS (CRP) (M ZONE 9, NAD 83 (ORIGINAL))
CRP A 5534397.87 308668.93
CRP B 5534397.87 308668.93
SECTION 12 AND 31 TO 35 (EXCLUSIVE), CONCESSION 3 (OTTAWA FRONT) IN ACCORDANCE WITH OREG 210/70, COORDINATES CANNOT IN THEMSELVES, BE USED TO RE-ESTABLISH CORNERS OR BOUNDARIES SHOWN ON THIS PLAN

SURVEYOR'S CERTIFICATE
I CERTIFY THAT:
(1) THIS SURVEY AND PLAN ARE CORRECT AND IN ACCORDANCE WITH THE SURVEYORS ACT AND THE LAND TITLES ACT AND THE REGULATIONS MADE UNDER THEM;
(2) THE SURVEY WAS COMPLETED ON THE _____ DAY OF _____ 2020.

J.P. SHIPMAN
ON-TOWN LAND SURVEYOR

H.A.KEN SHIPMAN SURVEYING LTD.
P.O. BOX 53, NORTH GOWER, ONT. K0A 2T0
REF. NO.: 20-2014
REG. NO.: 70-12082



Committee of Adjustment
AUG 28 2020
City of Ottawa

BLOCK 119
BY-LAW 145 OF 1992
INST. L7508755

PART 21
PLAN 4R-21990

PLACE (REGISTERED) PLAN 4R-743

PART 22
PLAN 4R-21990

PART 3
PLAN 4R-21990
P.L.N. 04405 -- 0273

BY-LAW 2019-195 INST.
PART 1
EXPROPRIATION PLAN 00339349
P.L.N. 04405 -- 0239

PART 6
PLAN 4R-19052
P.L.N. 04405 -- 0274

PART 6
PLAN 4R-21990

BLOCK 105
P.L.N. 04405 -- 0117

BLOCK 118
P.L.N. 04405-0108

PART 4
PLAN 4R-19052

BLOCK 106
P.L.N. 04405 -- 0269

PART 4
PLAN 4R-19052

REGISTERED

SOUTHEAST CORNER BLOCK 105
REGISTERED PLAN 4R-743