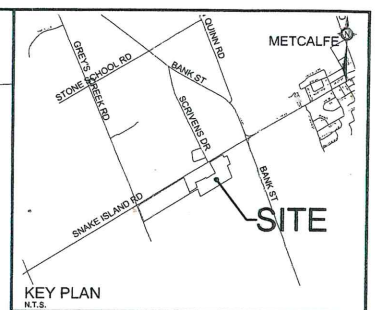
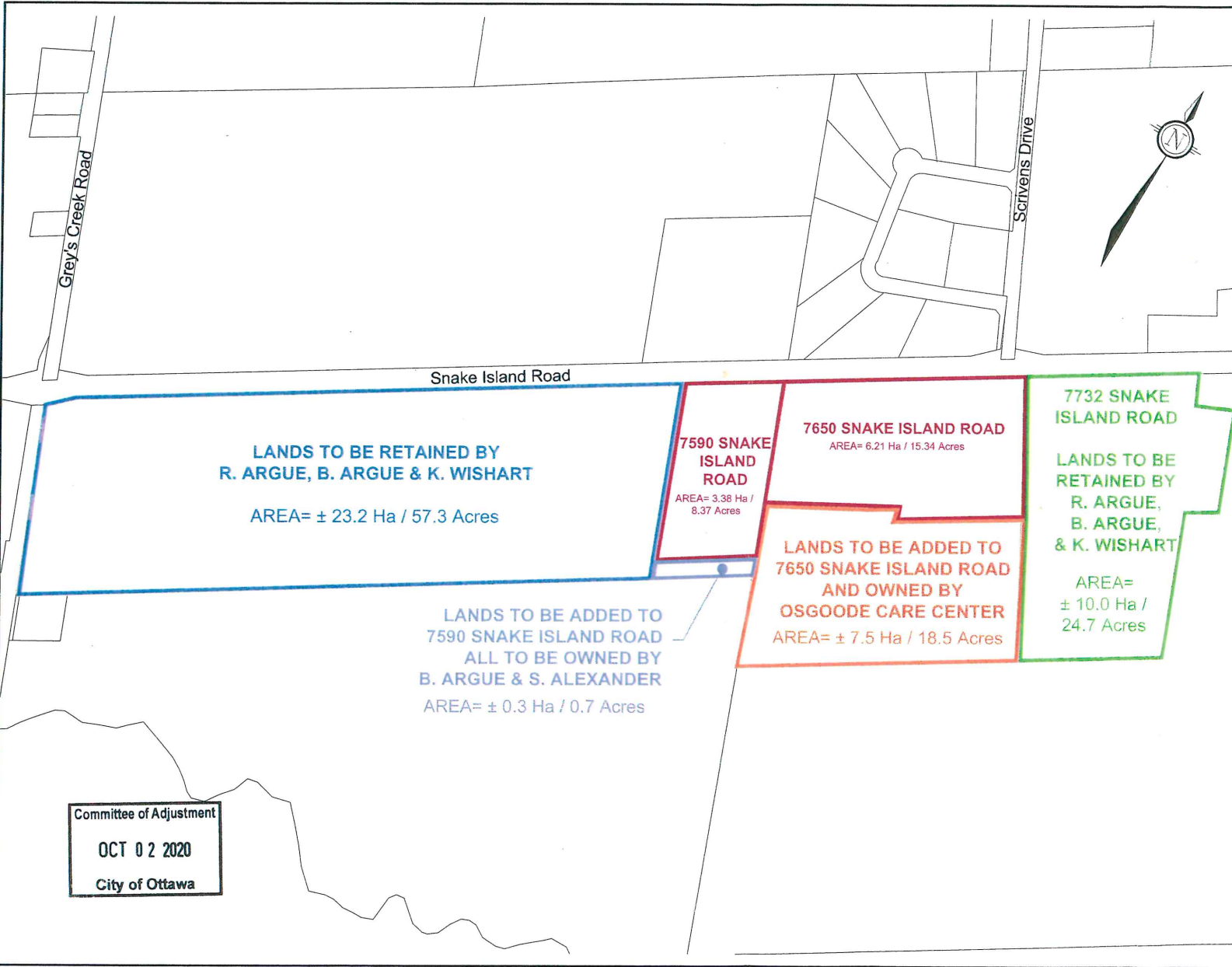


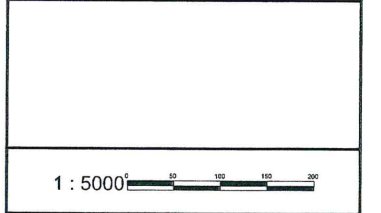
M:\PROPOSALS\2018\Murray-Chowm\18111-7650SnakeIslandRoad\18111-LotAddition.dwg, LotAddition, Nov 08, 2019 - 3:32pm, wslss



LOT ADDITION APPLICATIONS

7650 SNAKE ISLAND ROAD

PART OF LOT 21,
CONCESSION 6 OSGOODE
CITY OF OTTAWA



NO.	REVISION	DATE	BY
1.	ISSUED FOR LOT ADDITION APPLICATION	NOV 06/19	TJS

<p>Engineers, Planners & Landscape Architects 5015 202, 2nd Floor, Connaught Drive Ottawa, Ontario, Canada K2M 1P6 Telephone: (613) 234-9642 Facsimile: (613) 234-9642 Website: www.novatech-eng.com</p>	<p>ISSUED NOVEMBER, 2019</p>
	<p>PROJECT No. P18111</p> <p>DRAWING No. P18111-LotAddition</p>

Committee of Adjustment
OCT 02 2020
City of Ottawa