

SKETCH FOR COMMITTEE OF ADJUSTMENT APPLICATION:

PART OF LOT 21

CONCESSION 4

GEOGRAPHIC TOWNSHIP OF NORTH GOWER

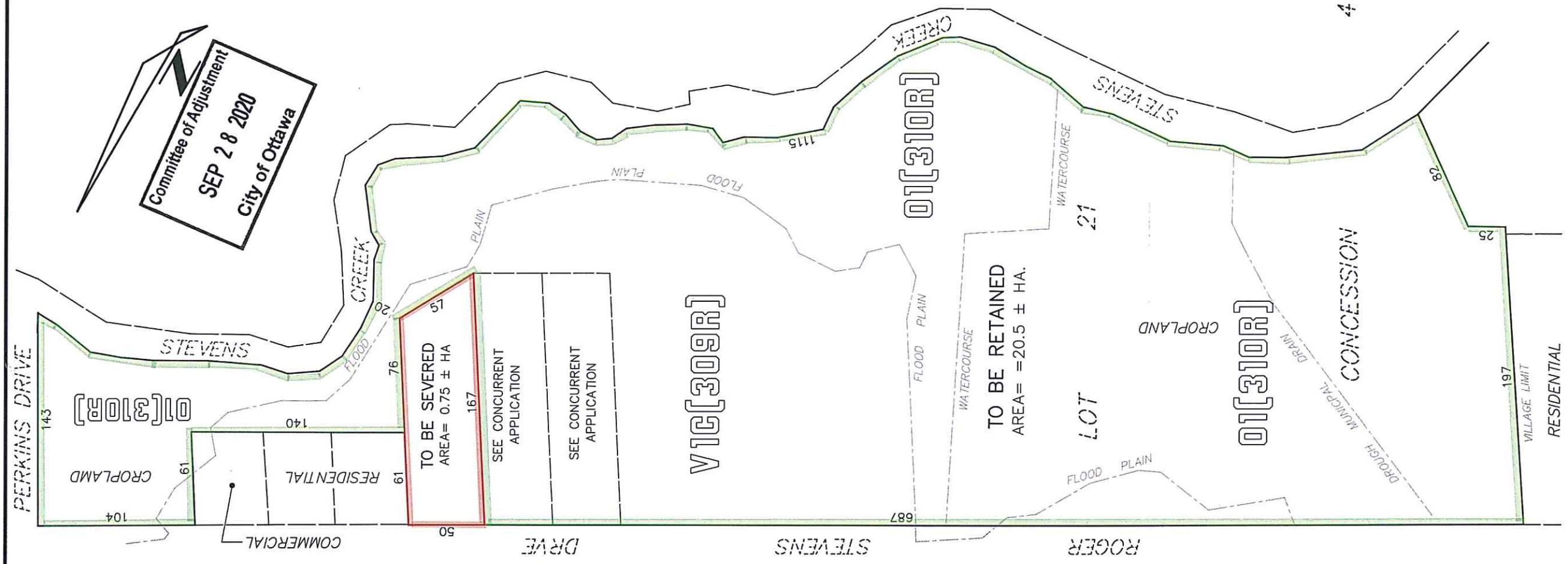
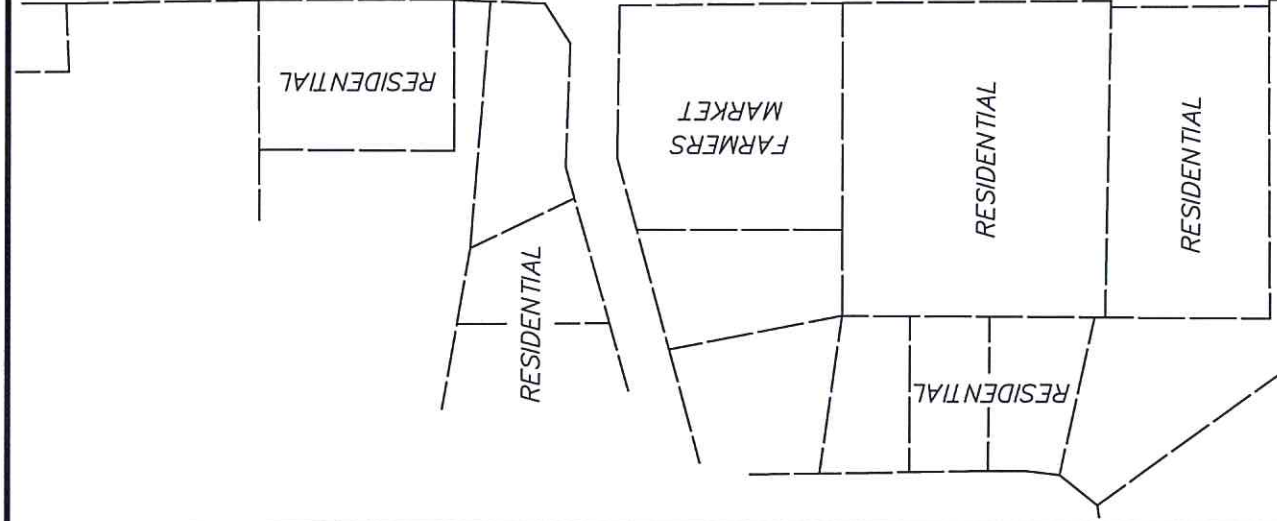
CITY OF OTTAWA

SCALE 1:3000 (Metric)

AUGUST 2020, 2019

THIS IS NOT A PLAN OF SURVEY
THIS SKETCH MAY NOT BE USED FOR ANY
PURPOSE OTHER THAN THAT OF COMMITTEE
OF ADJUSTMENT APPLICATION.

NOTES
ALL DISTANCES AND AREAS SHOWN ARE APPROXIMATE,
TAKEN FROM GEOTOWNA MEASUREMENTS.
SEVERED LAND IS VACANT.
RETAINED LAND IS VACANT.



Committee of Adjustment
SEP 28 2020
City of Ottawa