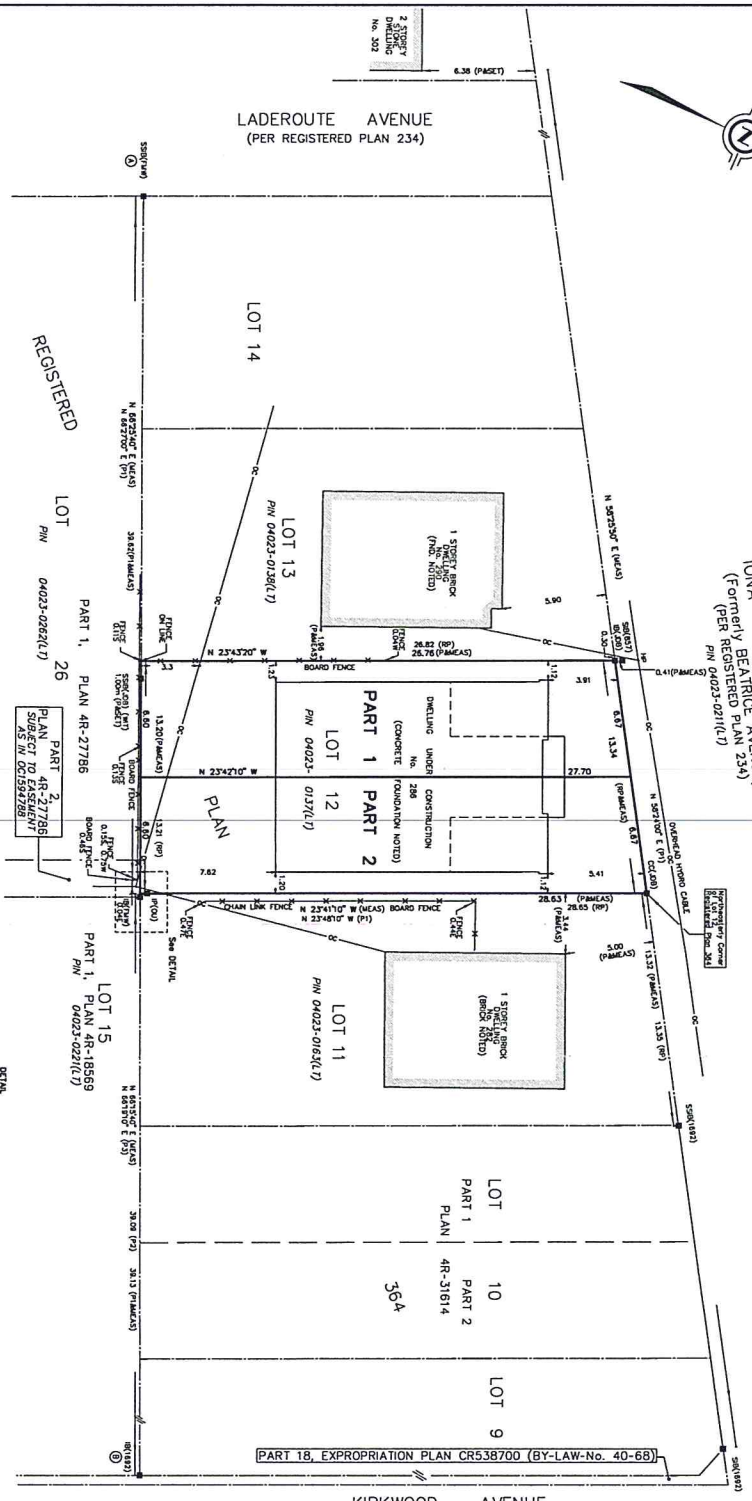


DRAFT PLAN FOR SEVERANCE

IONA STREET
(Formerly BEATRICE AVENUE)
(PER REGISTERED PLAN 234)
PIN 04023-0211(17)



SCHEDULE

PART	LOT	PLAN	AREA SQ. M.
1	ALL OF 12	364	178.9
2			186.0

KIRKWOOD AVENUE
(Formerly HENEY AVENUE)
(PER REGISTERED PLAN 234)

PLAN OF SURVEY OF
LOT 12
REGISTERED PLAN 364
CITY OF OTTAWA



LEGEND

- 1 - CONCRETE
- 2 - ASPHALT
- 3 - GRAVEL
- 4 - SAND
- 5 - GRAVEL
- 6 - SAND
- 7 - GRAVEL
- 8 - SAND
- 9 - GRAVEL
- 10 - SAND
- 11 - GRAVEL
- 12 - SAND
- 13 - GRAVEL
- 14 - SAND
- 15 - GRAVEL
- 16 - SAND
- 17 - GRAVEL
- 18 - SAND
- 19 - GRAVEL
- 20 - SAND
- 21 - GRAVEL
- 22 - SAND
- 23 - GRAVEL
- 24 - SAND
- 25 - GRAVEL
- 26 - SAND
- 27 - GRAVEL
- 28 - SAND
- 29 - GRAVEL
- 30 - SAND
- 31 - GRAVEL
- 32 - SAND
- 33 - GRAVEL
- 34 - SAND
- 35 - GRAVEL
- 36 - SAND
- 37 - GRAVEL
- 38 - SAND
- 39 - GRAVEL
- 40 - SAND
- 41 - GRAVEL
- 42 - SAND
- 43 - GRAVEL
- 44 - SAND
- 45 - GRAVEL
- 46 - SAND
- 47 - GRAVEL
- 48 - SAND
- 49 - GRAVEL
- 50 - SAND
- 51 - GRAVEL
- 52 - SAND
- 53 - GRAVEL
- 54 - SAND
- 55 - GRAVEL
- 56 - SAND
- 57 - GRAVEL
- 58 - SAND
- 59 - GRAVEL
- 60 - SAND
- 61 - GRAVEL
- 62 - SAND
- 63 - GRAVEL
- 64 - SAND
- 65 - GRAVEL
- 66 - SAND
- 67 - GRAVEL
- 68 - SAND
- 69 - GRAVEL
- 70 - SAND
- 71 - GRAVEL
- 72 - SAND
- 73 - GRAVEL
- 74 - SAND
- 75 - GRAVEL
- 76 - SAND
- 77 - GRAVEL
- 78 - SAND
- 79 - GRAVEL
- 80 - SAND
- 81 - GRAVEL
- 82 - SAND
- 83 - GRAVEL
- 84 - SAND
- 85 - GRAVEL
- 86 - SAND
- 87 - GRAVEL
- 88 - SAND
- 89 - GRAVEL
- 90 - SAND
- 91 - GRAVEL
- 92 - SAND
- 93 - GRAVEL
- 94 - SAND
- 95 - GRAVEL
- 96 - SAND
- 97 - GRAVEL
- 98 - SAND
- 99 - GRAVEL
- 100 - SAND

SURVEYOR'S CERTIFICATE

1. THIS SURVEY AND PLAN ARE CORRECT AND IN ACCORDANCE WITH THE SURVEY ACT, THE SURVEYORS ACT AND THE LAND TITLES ACT AND THE REGULATIONS MADE UNDER THEM.
2. THE SURVEY WAS COMPLETED ON AUGUST 6, 2020.
DATE: SEPTEMBER 23, 2020
ON BEHALF OF THE SURVEYOR
ON BEHALF OF THE CLIENT

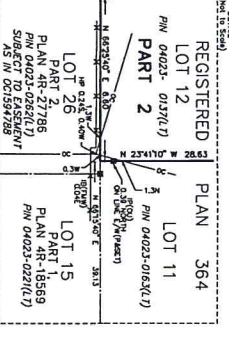
J.D. BARNES SURVEYING
LAND INFORMATION SPECIALISTS
LIMITED
1100
1100
1100

INTEGRATION DATA

REGISTERED REFERENCE POINTS (RPPs)	AREA 2006 OR 2008 (CENR) (2010)
COMPONENTS TO OBTAIN ACCURACY PER SECTION 14 (2) OF OREG. 41/76	
DATE OF	3 NOVEMBER
BY	3 008 00121
COMPONENTS CANNOT BE INTEGRATED, BE USED TO RECONSTRUCT COMPONENTS OR BOUNDARIES SHOWN ON THIS PLAN.	
THE RESULTANT BE BETWEEN RPP (A) AND RPP (B) IS 78.78m N 82.70° W E	

NOTES
1. THIS SURVEY AND PLAN ARE CORRECT AND IN ACCORDANCE WITH THE SURVEY ACT, THE SURVEYORS ACT AND THE LAND TITLES ACT AND THE REGULATIONS MADE UNDER THEM.
2. THE SURVEY WAS COMPLETED ON AUGUST 6, 2020.
DATE: SEPTEMBER 23, 2020
ON BEHALF OF THE SURVEYOR
ON BEHALF OF THE CLIENT

Committee of Adjustment
OCT 15 2020
City of Ottawa



FILE: C:\19-10-000\19-10-000\19-10-000\19-10-000.dwg