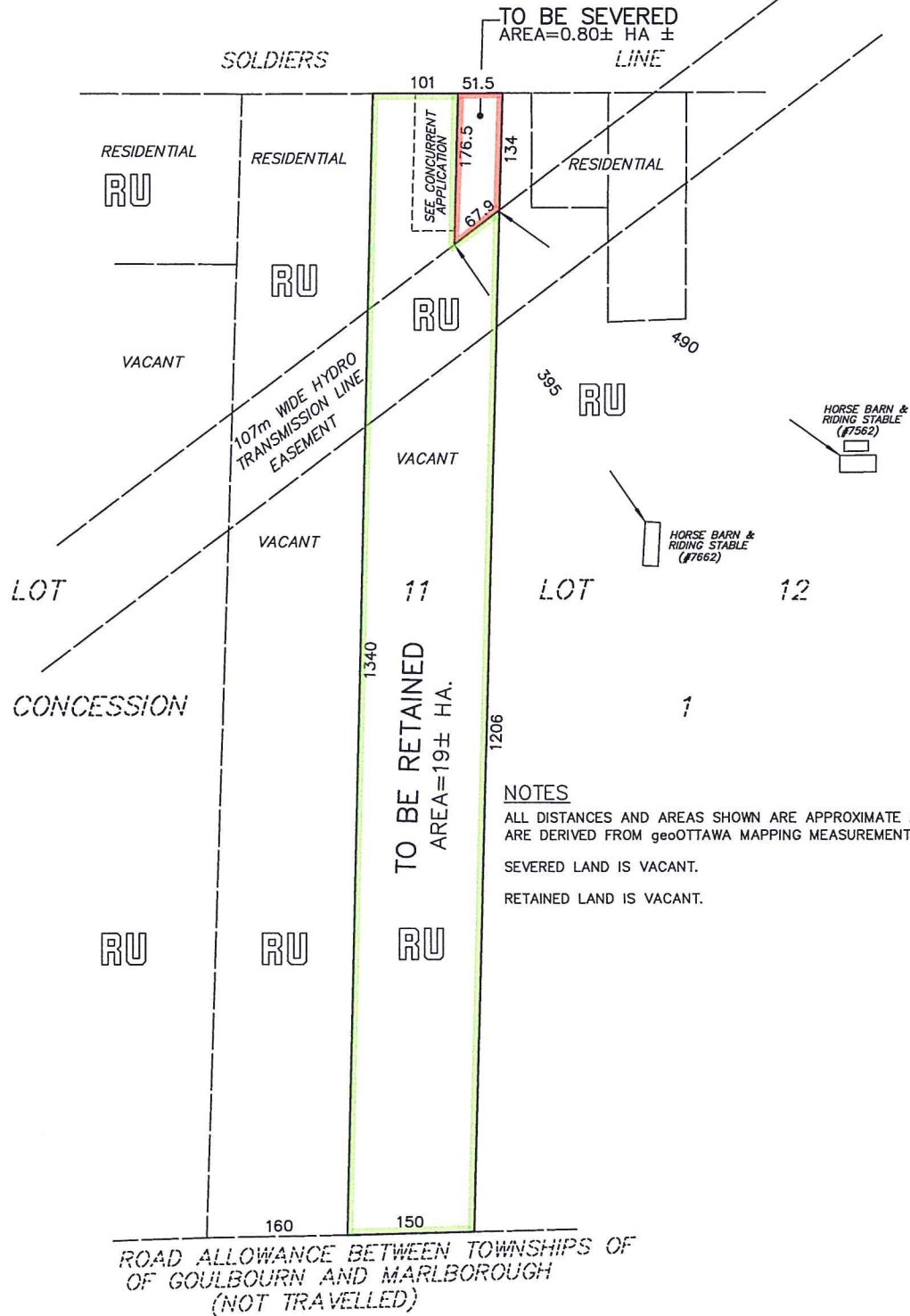


SKETCH FOR COMMITTEE OF ADJUSTMENT APPLICATION:
 PART OF LOT 11
 CONCESSION 1
 GEOGRAPHIC TOWNSHIP OF GOULBOURN
 CITY OF OTTAWA
 SCALE 1:6000 (Metric)
 AUGUST, 2020

Committee of Adjustment
 SEP 18 2020
 City of Ottawa

THIS IS NOT A PLAN OF SURVEY
 THIS SKETCH MAY NOT BE USED FOR ANY
 PURPOSE OTHER THAN THAT OF LAND
 DIVISION COMMITTEE APPLICATION.



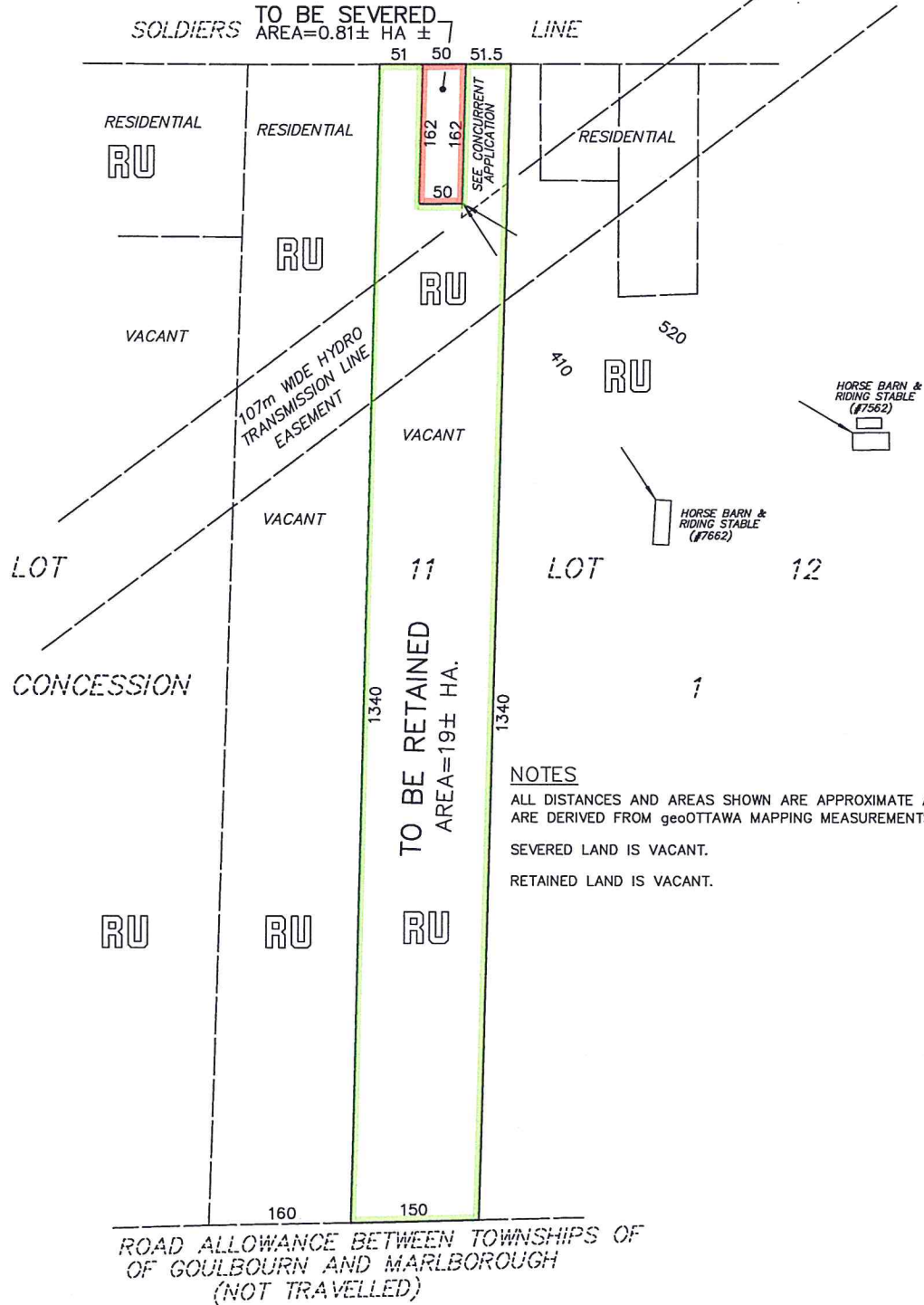
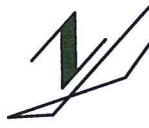
NOTES
 ALL DISTANCES AND AREAS SHOWN ARE APPROXIMATE AND
 ARE DERIVED FROM geoOTTAWA MAPPING MEASUREMENTS.
 SEVERED LAND IS VACANT.
 RETAINED LAND IS VACANT.

ROAD ALLOWANCE BETWEEN TOWNSHIPS OF
 OF GOULBOURN AND MARLBOROUGH
 (NOT TRAVELLED)

SKETCH FOR COMMITTEE OF ADJUSTMENT APPLICATION:
 PART OF LOT 11
 CONCESSION 1
 GEOGRAPHIC TOWNSHIP OF GOULBOURN
 CITY OF OTTAWA
 SCALE 1:6000 (Metric)
 AUGUST, 2020

Committee of Adjustment
 SEP 18 2020
 City of Ottawa

THIS IS NOT A PLAN OF SURVEY
 THIS SKETCH MAY NOT BE USED FOR ANY
 PURPOSE OTHER THAN THAT OF LAND
 DIVISION COMMITTEE APPLICATION.

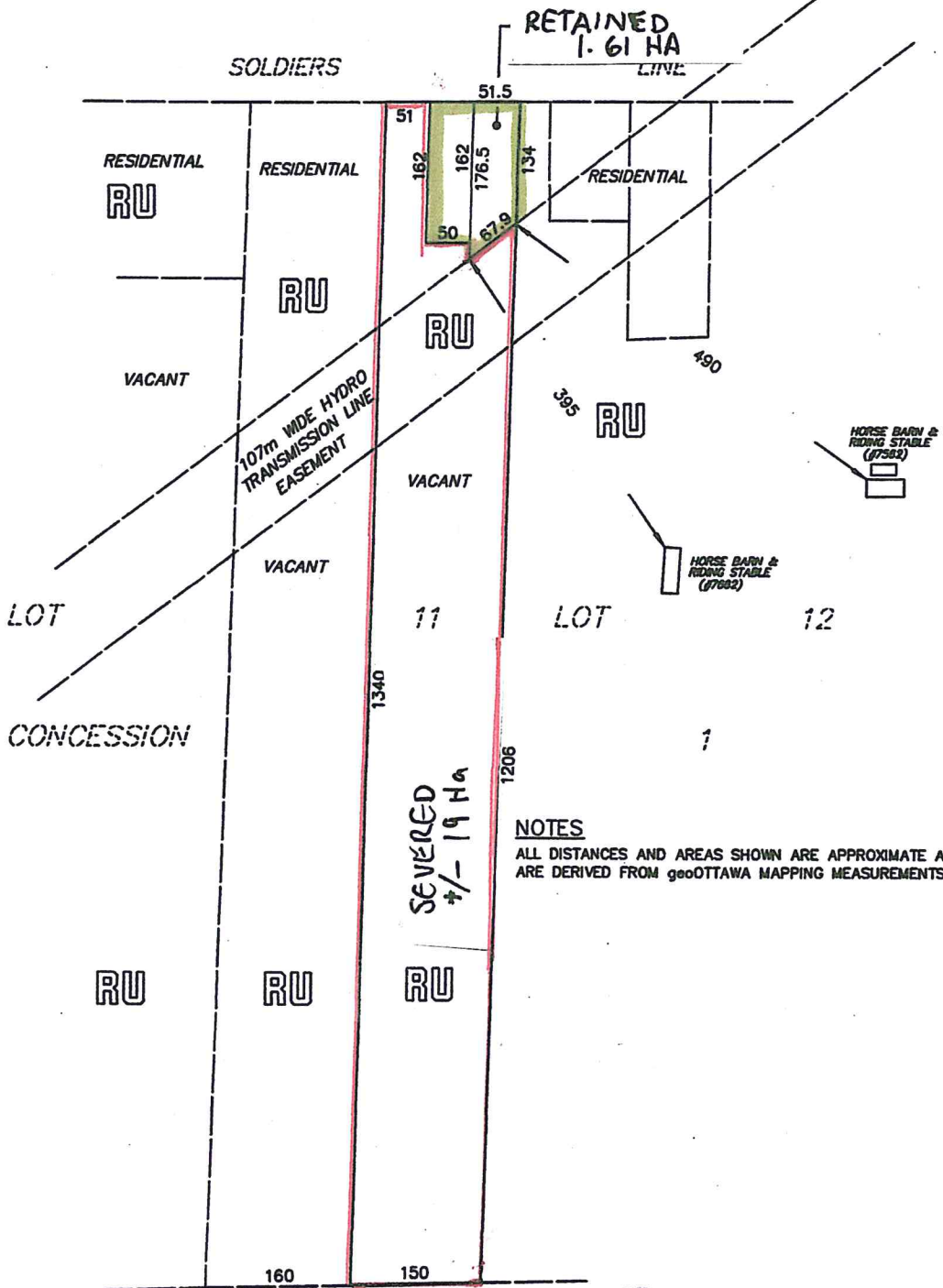


NOTES
 ALL DISTANCES AND AREAS SHOWN ARE APPROXIMATE AND ARE DERIVED FROM geoOTTAWA MAPPING MEASUREMENTS.
 SEVERED LAND IS VACANT.
 RETAINED LAND IS VACANT.

SKETCH FOR COMMITTEE OF ADJUSTMENT APPLICATION:
 PART OF LOT 12
 CONCESSION 1
 GEOGRAPHIC TOWNSHIP OF GOULBOURN
 CITY OF OTTAWA
 SCALE 1:6000 (Metric)
 AUGUST, 2020

Committee of Adjustment
 SEP 18 2020
 City of Ottawa

THIS IS NOT A PLAN OF SURVEY
 THIS SKETCH MAY NOT BE USED FOR ANY
 PURPOSE OTHER THAN THAT OF LAND
 DIVISION COMMITTEE APPLICATION.



NOTES
 ALL DISTANCES AND AREAS SHOWN ARE APPROXIMATE AND
 ARE DERIVED FROM geoOTTAWA MAPPING MEASUREMENTS.

ROAD ALLOWANCE BETWEEN TOWNSHIPS OF
 OF GOULBOURN AND MARLBOROUGH
 (NOT TRAVELLED)