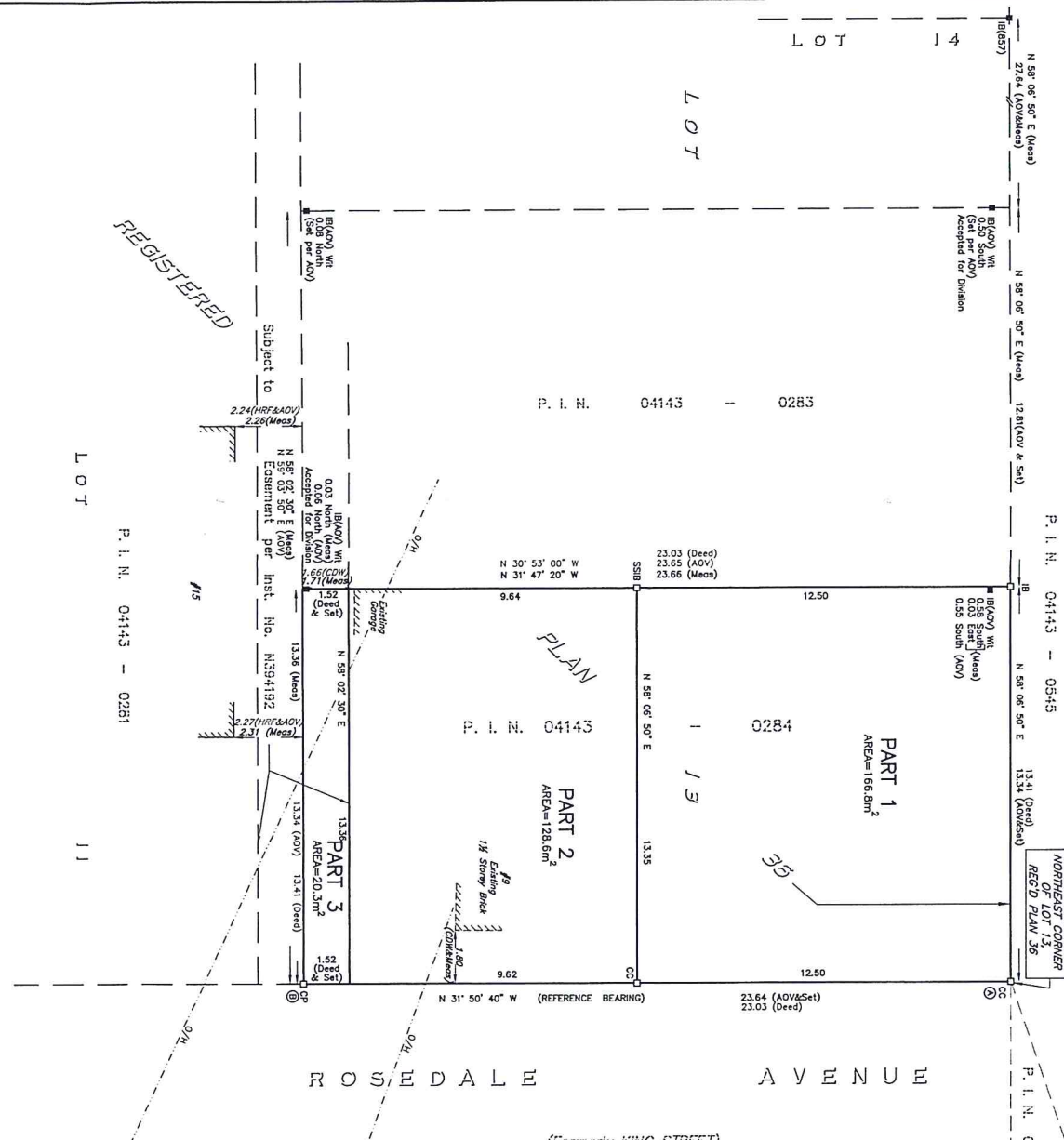




PART OF LOT "K"
CONCESSION "C" (RIDEAU FRONT)
GEOGRAPHIC TOWNSHIP OF NEPEAN
(PART I, PLAN 4R-2501)
COLONEL BY DRYE
 P. I. N. 04143 - 0545



REGISTERED

LOT 1

LOT 11

P. I. N. 04143 - 0281

P. I. N. 04143 - 0541

ROSEDALE AVENUE
(Formerly KING STREET)

Committee of Adjustment
AUG 21 2020
City of Ottawa

I REQUIRE THIS PLAN TO BE DEPOSITED UNDER THE LAND TITLES ACT.		DATE: MARCH 26, 2013	
Ronald A. Denis		DATE: MARCH 26, 2013	
ONTARIO LAND SURVEYOR		RECEIVED AND DEPOSITED	
PART 3 - Subject to Easement per Part No. N394192		DATE: MARCH 26, 2013	
PLAN OF SURVEY OF PART OF LOT 13 (WEST SIDE ROSEDALE AVENUE) REGISTERED PLAN 36 CITY OF OTTAWA FARLEY, SMITH & DENIS SURVEYING LTD. 2013		RECEIVED FOR THE LAND TITLES DIVISION OF OTTAWA-CARLETON No. 4	

BEARINGS ARE GRID AND ARE DERIVED FROM REFERENCE POINTS (A) AND (B) BY REAL TIME NETWORK OBSERVATIONS AND WAS REFERRED TO THE CENTRAL MERIDIAN 7530M LONGITUDE, UTM ZONE 9, N.A.D. 1983 (ORIGINAL).
 DISTANCES ARE GRID AND CAN BE CONVERTED TO FEET BY MULTIPLYING BY A COMBINED SCALE FACTOR OF 0.999985.
 CO-ORDINATES WERE DERIVED FROM REAL TIME NETWORK OBSERVATIONS (SWARNED) UTM ZONE 9, N.A.D. 1983 (ORIGINAL).
 CO-ORDINATES ARE UTM ZONE 9, N.A.D. 1983 (ORIGINAL), TO URBAN ACCURACY PER SEC. 14 (2) OF OREG. 2187/10, AND CANNOT, IN THE DEGREE, BE USED TO RE-ESTABLISH CORNERS OR BOUNDARIES SHOWN ON THIS PLAN.

METRIC NOTE

DISTANCES AND CO-ORDINATES SHOWN ON THIS PLAN ARE IN METRES AND CAN BE CONVERTED TO FEET BY DIVIDING BY 0.3048.

BEARING NOTE

BEARINGS ARE GRID AND ARE DERIVED FROM REFERENCE POINTS (A) AND (B) BY REAL TIME NETWORK OBSERVATIONS AND WAS REFERRED TO THE CENTRAL MERIDIAN 7530M LONGITUDE, UTM ZONE 9, N.A.D. 1983 (ORIGINAL).
 DISTANCES ARE GRID AND CAN BE CONVERTED TO FEET BY MULTIPLYING BY A COMBINED SCALE FACTOR OF 0.999985.

POINT ID	NORTHING	EASTING
(A)	5028608.606	368307.613
(B)	5028588.464	368303.123

LEGEND

■	SURVEY MONUMENT FOUND
□	STANDARD IRON BAR
○	NON-STANDARD IRON BAR
●	CONCRETE PIN
+	CUT CROSS
✕	REGISTERED PLAN 36
✕	REGISTERED PLAN 4192
✕	1992/750 FARLEY, SMITH & DENIS SURVEYING LTD.
✕	1983/750 FARLEY, SMITH & DENIS SURVEYING LTD.
✕	857/750 FARNALL, MORGENTHAU & WOODLAND LIMITED
✕	MAY 4, 2000
✕	C.D. MORGENTHAU O.L.S. October 18, 1932
✕	O/H
✕	OVERHEAD WIRES
✕	DEMOTES EXISTING BUILDING

SURVEYOR'S CERTIFICATE:
 I certify that the plan and data are correct and in accordance with the Surveyors Act, the regulations made under them, and the Land Titles Act and the regulations made under them.
 Date: MARCH 26, 2013
 Ronald A. Denis
 Ontario Land Surveyor

METRIC NOTE:
 DISTANCES AND CO-ORDINATES SHOWN ON THIS PLAN ARE IN METRES AND CAN BE CONVERTED TO FEET BY DIVIDING BY 0.3048.
 FILE No.: 494-10 INDEX: 1205