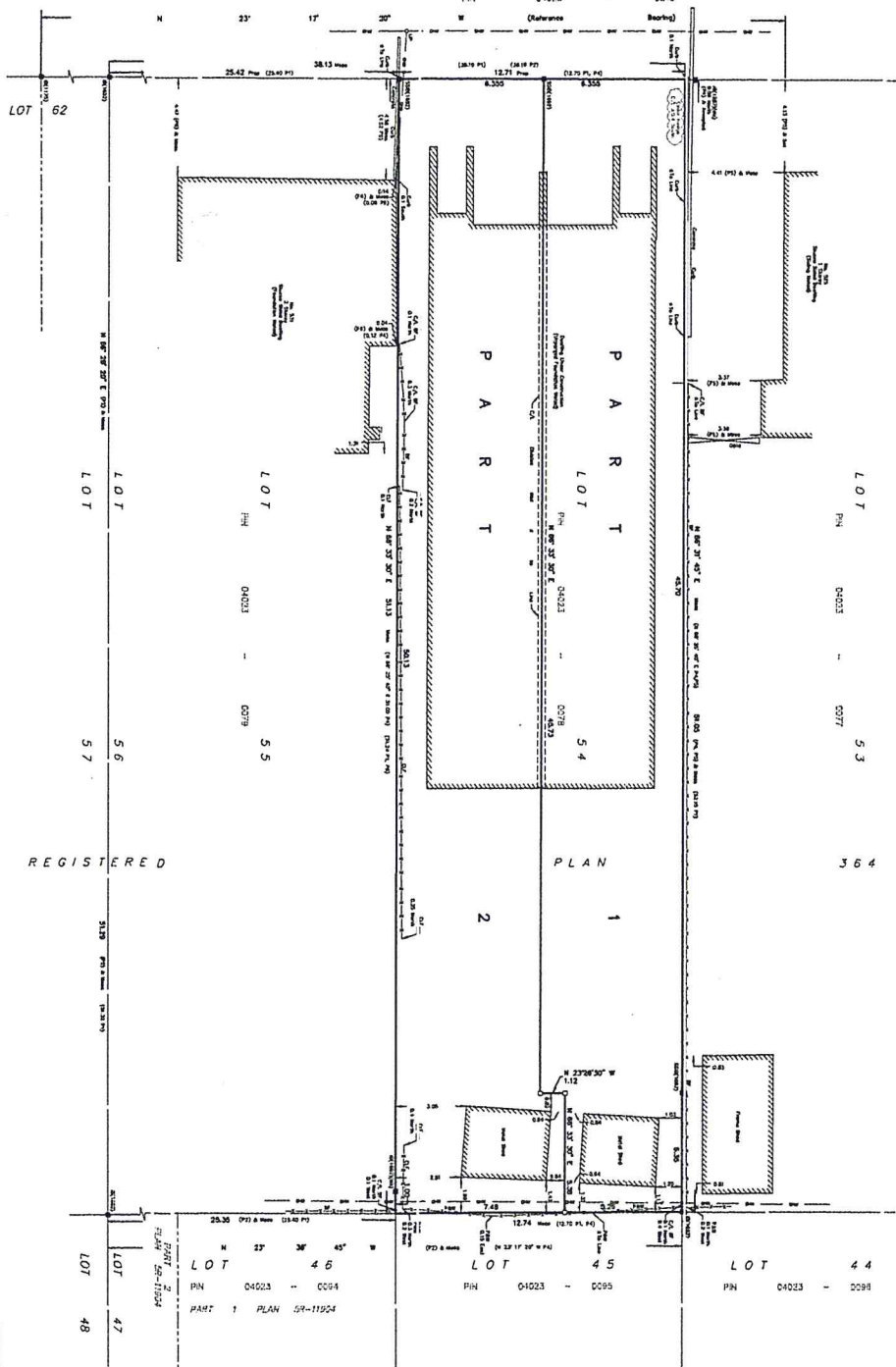


BROADHEAD AVENUE
(REGISTERED PLAN 234)



Committee of Adjustment
 AUG 28 2020
 City of Ottawa

PLAN OR SURVEY OF	DATE	SCALE	DATE
PLAN 4R- REGISTERED PLAN 364 CITY OF OTTAWA	2020	1:100	2020

METRIC NOTE
 All dimensions are in metric units and are to be rounded to the nearest millimetre.
BEARING NOTE
 All bearings are given in degrees, minutes and seconds, measured clockwise from the back-sight line to the fore-sight line.
 The bearing of a line is the angle measured clockwise from the back-sight line to the fore-sight line.
 The bearing of a line is the angle measured clockwise from the back-sight line to the fore-sight line.
 The bearing of a line is the angle measured clockwise from the back-sight line to the fore-sight line.

NOTED & LARGED
 All dimensions are in metric units and are to be rounded to the nearest millimetre.
 The bearing of a line is the angle measured clockwise from the back-sight line to the fore-sight line.
 The bearing of a line is the angle measured clockwise from the back-sight line to the fore-sight line.
 The bearing of a line is the angle measured clockwise from the back-sight line to the fore-sight line.

Surveyor's Certificate
 I, the undersigned, being a duly qualified and licensed Surveyor of the Province of Ontario, do hereby certify that the foregoing is a true and correct copy of the original plan as filed in my office, and that the same has been examined and found to conform with the provisions of the Survey Act, R.S.O. 1990, c. S. 27, and the regulations thereunder.
 Dated this 28th day of August, 2020.
 Surveyor's Name: [Name]
 Surveyor's No.: [Number]

PARLEY SMITH & DENNIS STEVENSON LTD.
 ONTARIO LAND SURVEYORS
 290 DUNDAS STREET WEST, SUITE 200
 TORONTO, ONTARIO M5G 1C8
 TEL: (416) 593-8888 FAX: (416) 593-8889