

PLAN 4R-
 RECORDED AND DEPOSITED
 DATE: _____

REQUIRE THE PLAN TO BE
 DEPOSITED UNDER THE
 DATE: _____

BY: _____
 REPRESENTATIVE FOR THE
 LAND TITLES DIVISION OF
 OTTAWA-CARLETON NO. 4.

ONWARD LAND SURVEYOR
 T. HARTWICK

AREA (SQ.M.)	PART	LOT	PLAN	FPN
119.0	2	34	80096	0421-0202

SCHEDULE				
1	2	3	4	5

**PLAN OF SURVEY OF
 LOT 34
 REGISTERED PLAN 98806
 CITY OF OTTAWA**
 Surveyed by Annis, O'Sullivan, Vollenbakk Ltd.

Scale 1 : 100
 Metric
 DISTANCES AND COORDINATES SHOWN ON THIS PLAN
 ARE IN METRES AND CAN BE CONVERTED TO FEET BY
 DIVIDING BY 0.3048.

Surveyor's Certificate
 I, CERTIFY THAT:
 1. This survey and plan are correct and in accordance with the Survey
 Act and the Land Titles Act and the regulations
 made under them.
 2. This survey was completed on the 4th day of June, 2020.

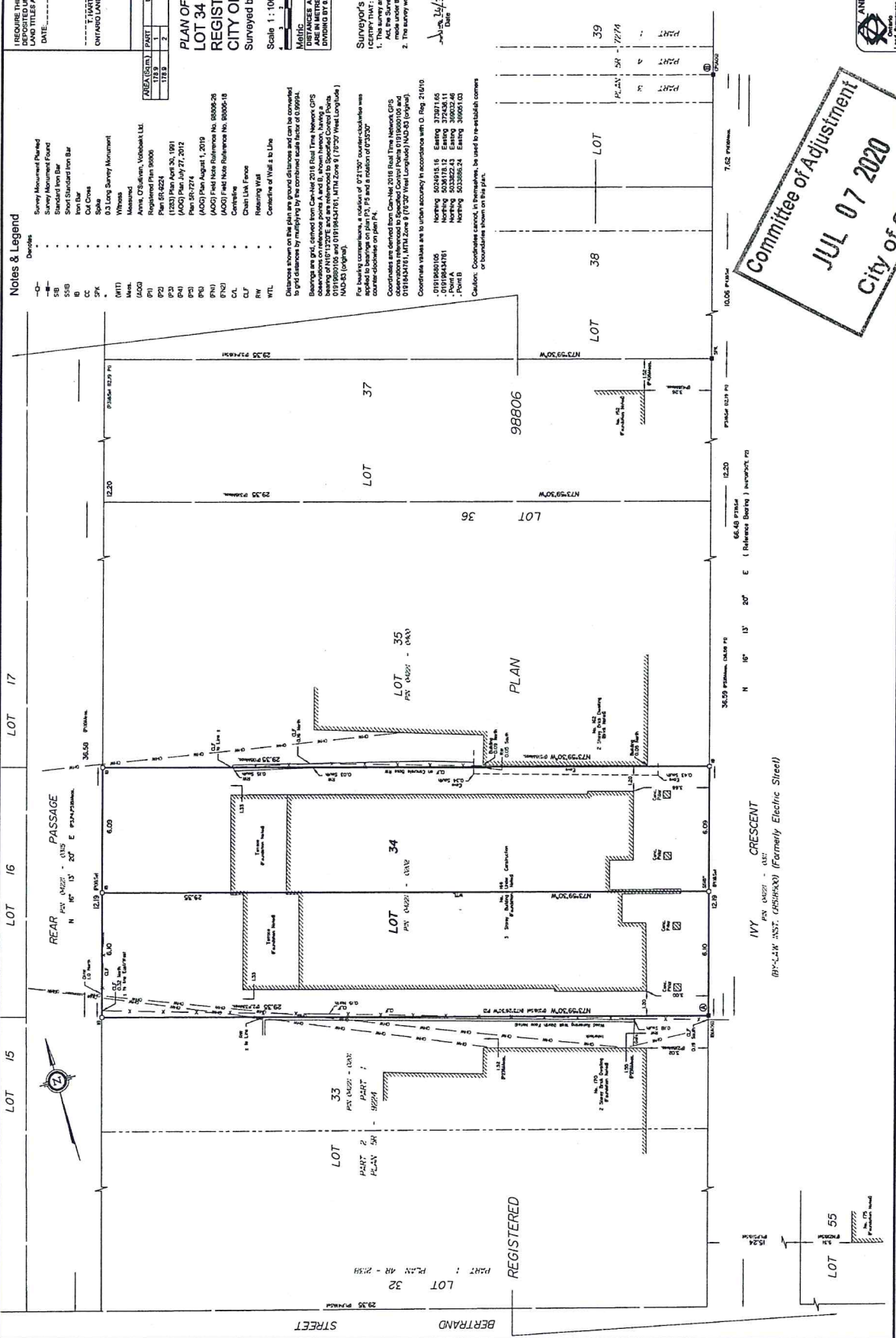
Annis, O'Sullivan, Vollenbakk Ltd.
 Registered Plan 98806
 Plan 8R-8224
 (2020) Plan April 30, 1991
 (A003) Plan July 27, 2012
 (A003) Plan August 1, 2019
 (A003) Field Note Reference No. 80005-26
 (A003) Field Note Reference No. 80005-18
 Centreline
 Chain Link Fence
 Remaining Wall
 WTL

Notes & Legend
 Decimals
 Survey Monument Placed
 Survey Monument Found
 SB
 SSB
 Short Standard Iron Bar
 IB
 CC
 Cut Cross
 SPK
 10 Long Survey Monument
 MTL
 Metal
 MTL
 Annis, O'Sullivan, Vollenbakk Ltd.
 Registered Plan 98806
 Plan 8R-8224
 (2020) Plan April 30, 1991
 (A003) Plan July 27, 2012
 (A003) Plan August 1, 2019
 (A003) Field Note Reference No. 80005-26
 (A003) Field Note Reference No. 80005-18
 Centreline
 Chain Link Fence
 Remaining Wall
 WTL

Distances shown on this plan are ground distances and can be converted
 to grid distances by multiplying by the combined scale factor of 0.99994.
 Bearings are grid, derived from CanLid 2018 Real Time Network GPS
 observations on reference points A and B, shown herein, having a
 combined accuracy of 0.00001 m (0.00001 ft) and a combined accuracy
 of 0.119680105 and 0.191864761, NAD 83 Zone 8 (17237 West Longitude)
 NAD 83 (original).

For bearing compliance, a rotation of 0.211307 counter-clockwise was
 applied to bearings on plan P3, P5 and a rotation of 0.35207
 counter-clockwise was applied to bearings on plan P4.
 Coordinates are derived from CanLid 2018 Real Time Network GPS
 observations on reference points A and B, shown herein, having a
 combined accuracy of 0.00001 m (0.00001 ft) and a combined accuracy
 of 0.119680105 and 0.191864761, NAD 83 Zone 8 (17237 West Longitude)
 NAD 83 (original).

Coordinates shown on this plan are in urban accuracy in accordance with O. Reg. 216/10
 0191840105 Northing 5030451.65 Easting 5729214.66
 01918401761 Northing 5030152.12 Easting 5724506.11
 Point A Northing 5030322.43 Easting 5690222.46
 Point B Northing 5030582.47 Easting 5690222.46
 Caution: Coordinates subject to adjustment, be used to re-establish corners
 shall be derived from this plan only.



**Committee of Adjustment
 JUL 07 2020
 City of Ottawa**

ANNIS, O'SULLIVAN, VOLLENBACC LTD.
 44 Gloucester Court, Suite 200
 Ottawa, Ontario K1N 2N2
 Phone: (613) 277-2820 / Fax: (613) 277-0799
 Land Surveyors Lic. No. 1120241, 1234, 12004, 12102