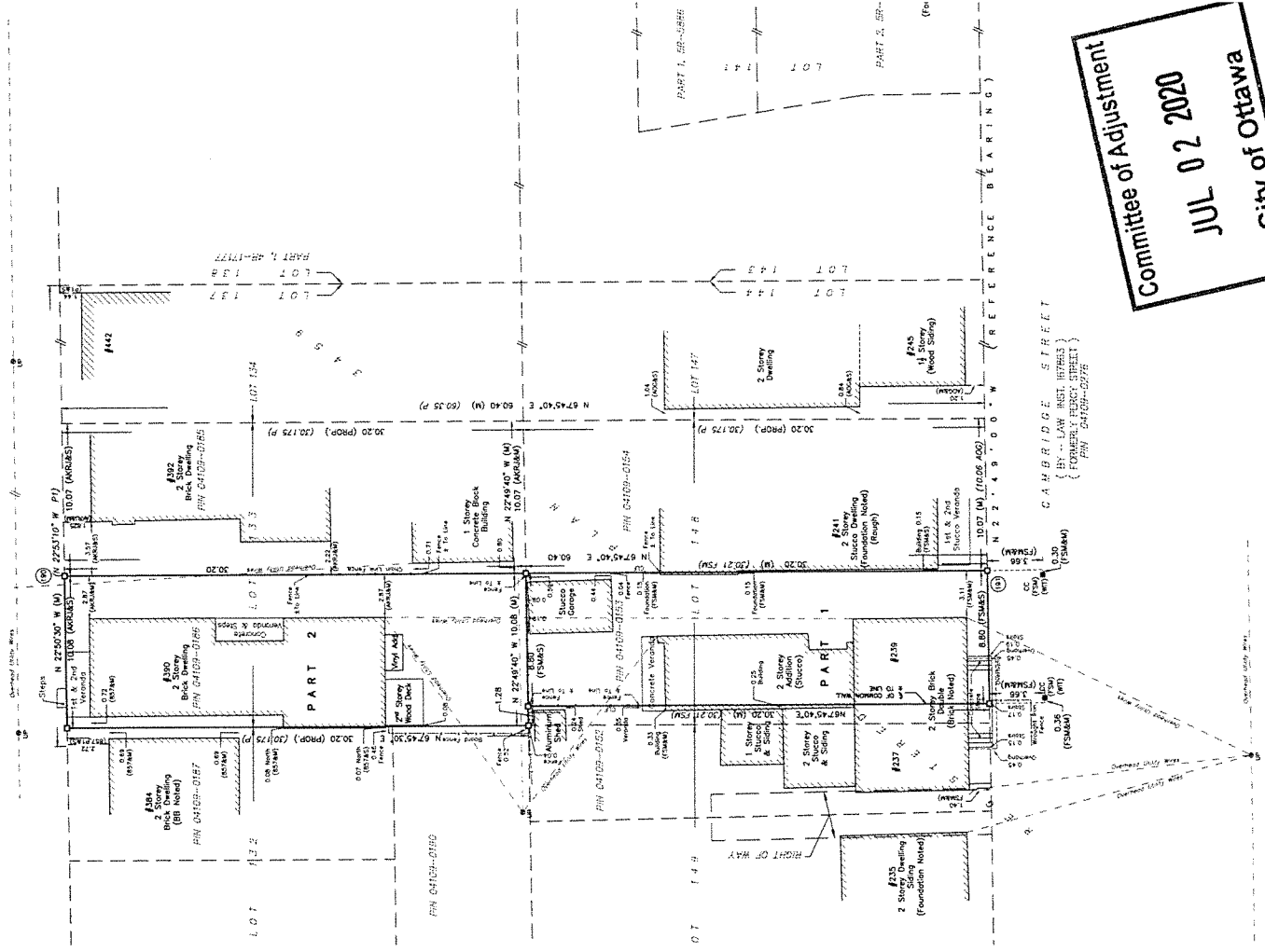


BURTONSON AVE. N.E.
 BETWEEN CONCESSION 1 (OTTAWA FRONT) AND C (BUREAU FRONT) (MERIDIAN)
 P.I.N. 04121-0324

PLAN PREPARED FOR COMMITTEE
 OF ADJUSTMENT PURPOSES
 MARCH 11, 2020

PART	LOT
2	PART OF LOT 148
2	PART OF LOT 135



CAMBRIDGE STREET
 (BY-LAW REG. REFERS TO)
 (FOUR-SEVEN SEVENTY)
 P.I.N. 04120-0275

Committee of Adjustment
 JUL 02 2020
 City of Ottawa