

Committee of Adjustment
 JUL 2 2020
 City of Ottawa

PLAN 4R-
RECEIVED AND DEPOSITED
DATE: _____

REQUIRE THIS PLAN TO BE
REGISTERED UNDER THE
LAND TITLES ACT.
DATE: _____

ANDRIE ROY
REPRESENTATIVE FOR THE
LAND REGISTRAR FOR THE
LAND TITLES DIVISION OF
OTTAWA-CARLETON NO. 4,
ONTARIO LAND SURVEYOR

AREA (Sq.m.)	LOT	PLAN	PIN
201.0	1	681	ALL OF 04230-0123
226.2	2		
17.5	3		
15.7	4		

SCHEDULE

Parts 3 and 4 are subject to assessment ltr. V16983.

**PLAN OF SURVEY OF
LOT 20
REGISTERED PLAN 681
CITY OF OTTAWA**
Surveyed by Annis, O'Sullivan, Vollebakk Ltd.
Scale 1:200

Notes & Legend

Distances and coordinates shown on this plan are in metres and can be converted to feet by dividing by 0.3048.

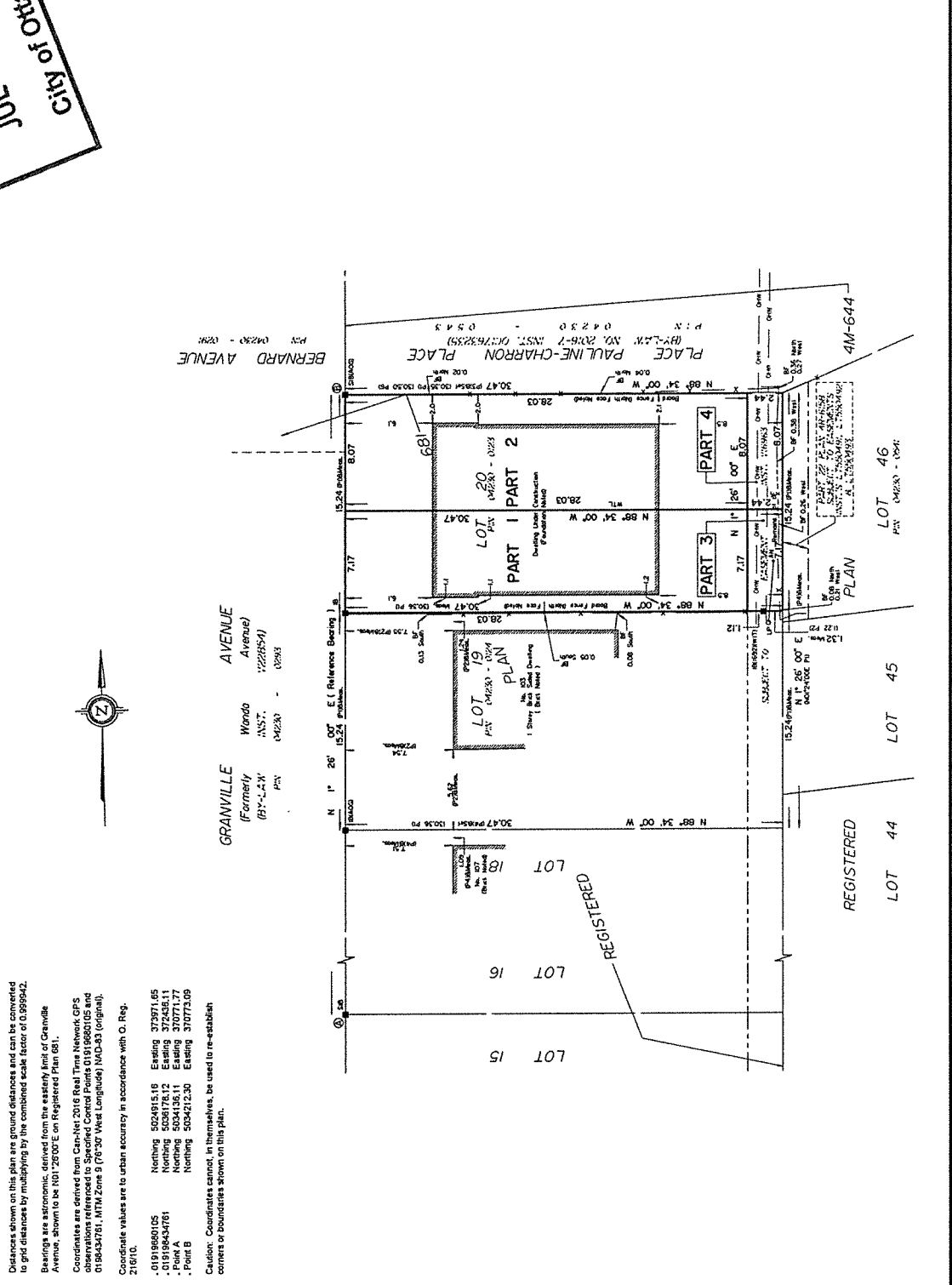
Surveyor's Certificate

I CERTIFY THAT:

- This survey and plan are correct and in accordance with the Surveys Act, the Surveyors Act and the Land Titles Act and the regulations made under them.
- The survey was completed on the ____ day of _____, 2020.

- Notes & Legend**
- Dist
 - Address Key
 - Outside Land Surveyor
 - Survey Monument Checked
 - Survey Monument Found
 - Standard Iron Bar
 - Iron Bar
 - (AO2)
 - Annis, O'Sullivan, Vollebakk Ltd.
 - Measured
 - Registered Plan 681
 - (1892) Plan, August 31, 2009
 - Plan 3R-0318
 - (AO3) Plan, May 12, 1992
 - (1236) Plan, February 14, 1981
 - Registered Plan 4M-044
 - Overhead Wfrs
 - Utility Pole
 - Anchor
 - Centreline of Walk to Line

ANNIS, O'SULLIVAN, VOLLEBEKK LTD.
 1400 Avenue Road, Suite 200
 Ottawa, Ontario K1R 7S6
 Phone (613) 727-0850 / Fax (613) 727-1079
 Land Surveyors, Reg. No. 02842-02, Inst. No. 42961 & 3



Distances shown on this plan are ground distances and can be converted to grid distances by multiplying by the combined scale factor of 0.999942.

Bearings are astronomic, derived from the eastern limit of Granville Avenue, shown to be N01°26'00"E on Registered Plan 681.

Coordinates are derived from Can-Net 2016 Real Time Network GPS observations referenced to Specified Control Points 01519880105 and 0189434781, MTM Zone 9 (76°30' West Longitude) NAD-83 (original).

Coordinate values are to urban accuracy in accordance with O. Reg. 216/10.

-01919880105 Northing 5024915.16 Easting 372371.65
 -019198434781 Northing 5036176.12 Easting 372438.11
 -Point A Northing 5034135.11 Easting 370711.77
 -Point B Northing 5034212.30 Easting 370772.69

Caution: Coordinates cannot, in themselves, be used to re-establish corners or boundaries shown on this plan.