

DIAGRAM A : PERIMETER PLAN OF SURVEY AND PLAN VIEW OF CONFIGURATION OF PARTS AT ELEVATION 82.00 metres

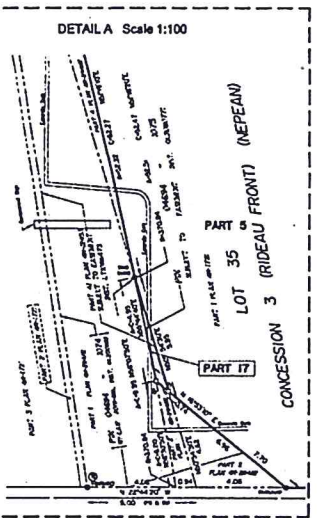
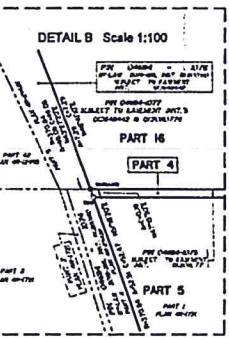
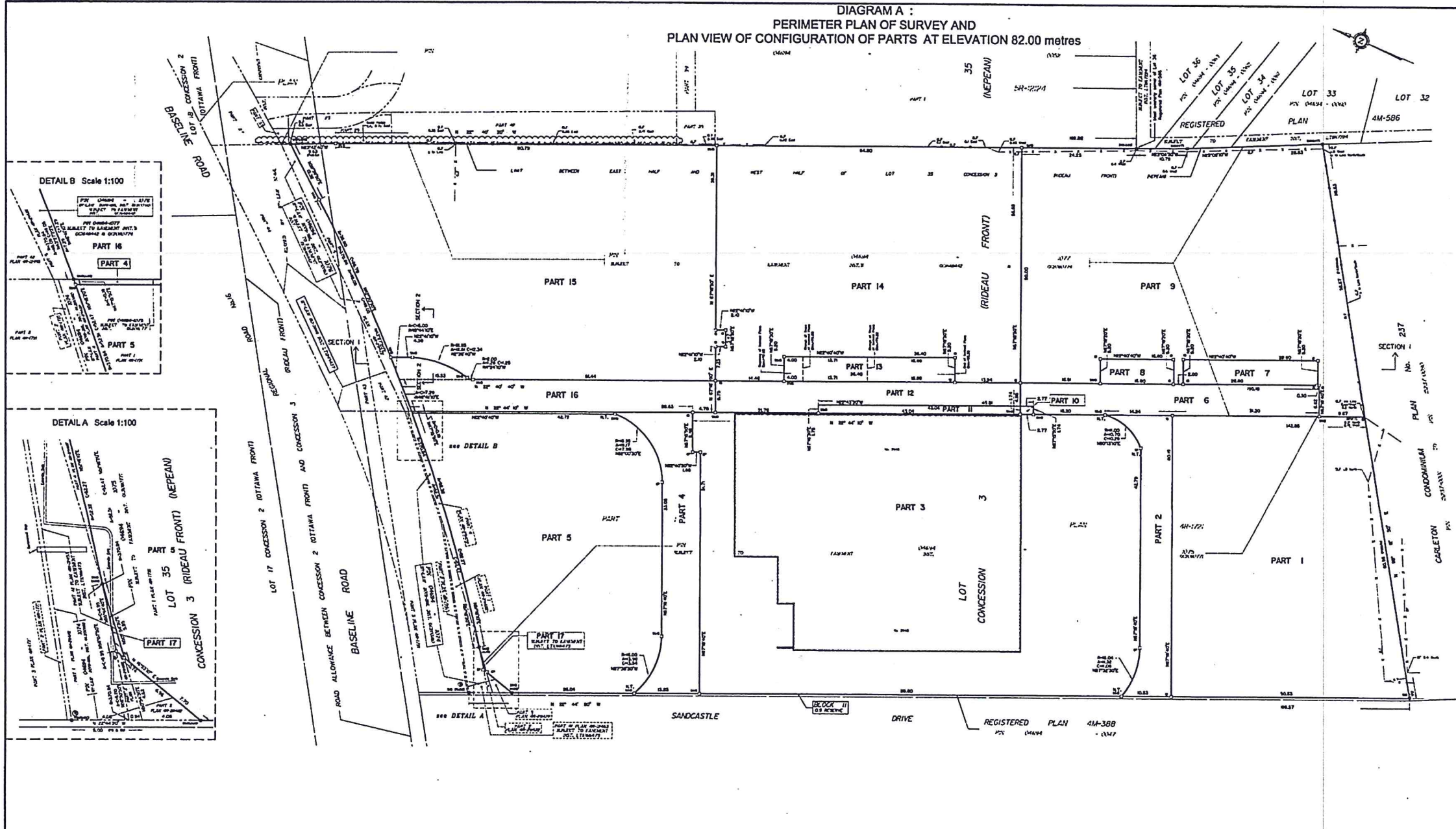
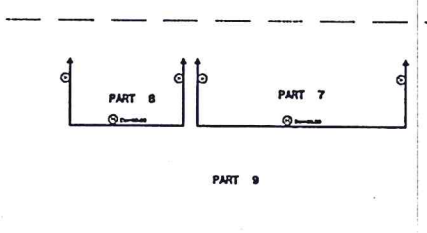
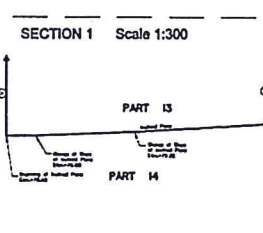
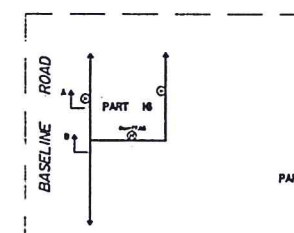
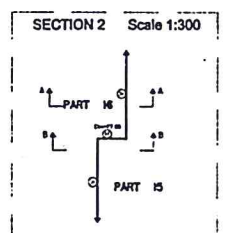
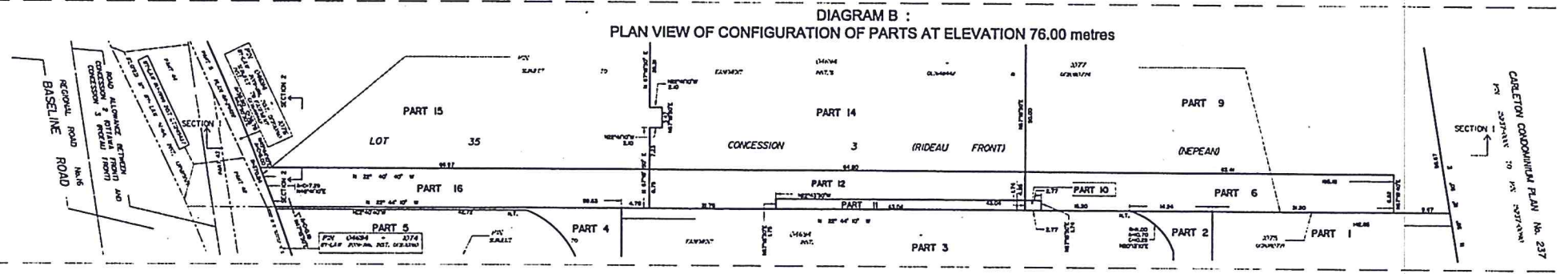


DIAGRAM B : PLAN VIEW OF CONFIGURATION OF PARTS AT ELEVATION 76.00 metres



Committee of Adjustment  
 JUL 16 2020  
 City of Ottawa

PLAN 4R-3059

Part	Description	Area	Notes
Part 1 to 17	Parts of Lot 35, Concession 3, and Road Allowance		

Part 17 is shown to Enactment Act 17/2018.  
 Part 1 to 16 is shown to Enactment Act 17/2018 & 02/2017.  
 Part 1 to 8 is shown to Enactment Act 17/2018 & 02/2017.  
 Part 1 to 8 is shown to Enactment Act 17/2018 & 02/2017.

STRATA PLAN OF SURVEY OF PART OF LOT 35 CONCESSION 3 (RIDEAU FRONT) AND PART OF THE ROAD ALLOWANCE BETWEEN CONCESSION 2 (OTTAWA FRONT) AND CONCESSION 3 (RIDEAU FRONT) CLOSED BY LAW 91-64, INST. C83(1552) GEOGRAPHIC TOWNSHIP OF NEPEAN CITY OF OTTAWA Surveyed by Annis, O'Sullivan, Vollebæk Ltd.

Scale 1:300

Distances and coordinates shown on this plan are in metres and can be converted to feet by dividing by 0.3048.

Surveyor's Certificate  
 I certify that:  
 1. The survey and plan are correct and in accordance with the Survey Act and the Survey and Land Time Ad and the regulations made under them.  
 2. The survey was completed on the 17th day of January, 2020.

Notes & Legend

- Circle with dot: Survey Station
- Solid line: Boundary Line
- Dashed line: Proposed Boundary Line
- Circle with slash: Proposed Road Allowance
- Circle with cross: Proposed Concession
- Circle with plus: Proposed Lot

Distances shown on this plan are ground distances and shall be converted to grid distances by multiplying by the correction factor of 0.99987.

Boundaries are not defined from the 2011 Road Time Network GPS measurements or other points and lines shown herein, being the bearing of N32°W and are submitted to Specialized Corner Plans (1916/2008 and 1916/2007/08) under the Survey Act, R.S.O. 1990, Chapter M-2 (2nd Imp.) s. 24(2).

Coordinates are shown from the 2011 Road Time Network GPS measurements submitted to Specialized Corner Plans (1916/2008 and 1916/2007/08) under the Survey Act, R.S.O. 1990, Chapter M-2 (2nd Imp.) s. 24(2).

Contributions referred to in this plan are in accordance with O. Reg. 214/04.

Part 1	1:300	1916/2008	1916/2008
Part 2	1:300	1916/2008	1916/2008
Part 3	1:300	1916/2008	1916/2008

ANNIS, O'SULLIVAN, VOLLEBÆK LTD.  
 412 Dundas Street West  
 Toronto, Ontario M5G 1R8  
 Phone: (416) 591-9882 Fax: (416) 591-3439