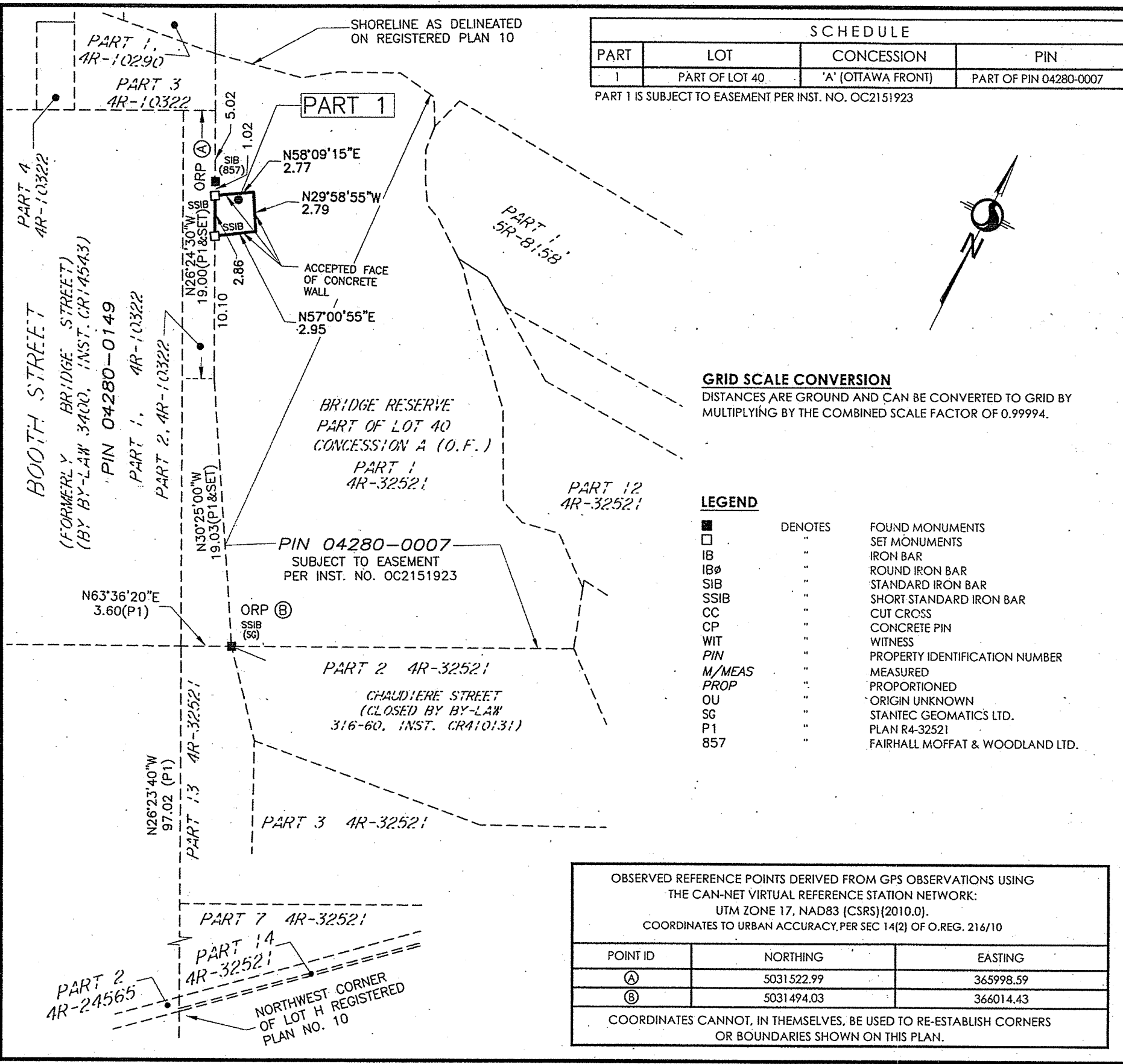


4 May 2020 7:47 AM
w:\active\161613467_ZIBL_WINDMILLDREAM_Ontario.ct (see 161613467 for files)\reference_plan\drawing\161613467-1034-ZIBL-RPlan-rev1.dwg



SCHEDULE			
PART	LOT	CONCESSION	PIN
1	PART OF LOT 40	'A' (OTTAWA FRONT)	PART OF PIN 04280-0007

PART 1 IS SUBJECT TO EASEMENT PER INST. NO. OC2151923

I REQUIRE THIS PLAN TO BE DEPOSITED UNDER THE LAND TITLES ACT.

DATE: May 6/20

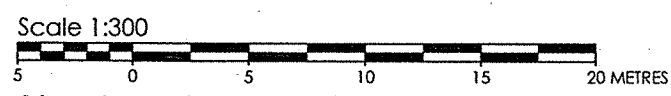
Brian J. Webster
BRIAN J. WEBSTER
ONTARIO LAND SURVEYOR

PLAN 4R-32853
RECEIVED AND DEPOSITED

DATE: May 7, 2020

Vanessa Williams
REPRESENTATIVE FOR THE LAND
REGISTRAR FOR THE LAND TITLES DIVISION
OF OTTAWA-CARLETON No. 4

PLAN OF SURVEY OF
**PART OF LOT 40
CONCESSION 'A' (OTTAWA FRONT)**
(GEOGRAPHIC TOWNSHIP OF NEPEAN)
CITY OF OTTAWA



Stantec Geomatics Ltd.

METRIC CONVERSION
DISTANCES AND COORDINATES SHOWN ON THIS PLAN ARE IN METRES
AND CAN BE CONVERTED TO FEET BY DIVIDING BY 0.3048

BEARING NOTE
BEARINGS ARE GRID, DERIVED FROM THE CAN-NET VRS NETWORK GPS OBSERVATIONS ON NCC HORIZONTAL CONTROL MONUMENTS 19773035 AND 19680191, CENTRAL MERIDIAN, 76° 30' WEST LONGITUDE MTM ZONE 9. NAD83 (ORIGINAL).

19773035 N:5006060.42 E:324888.04
19680191 N:5033564.26 E:388064.94

SURVEYOR'S CERTIFICATE
I CERTIFY THAT:

- THIS SURVEY AND PLAN ARE CORRECT AND IN ACCORDANCE WITH THE SURVEYS ACT, THE SURVEYORS ACT AND THE LAND TITLES ACT AND THE REGULATIONS MADE UNDER THEM.
- THE SURVEY WAS COMPLETED ON THE 30th DAY OF APRIL, 2020.

May 6/20
DATE

Brian J. Webster
BRIAN J. WEBSTER
ONTARIO LAND SURVEYOR

Committee of Adjustment
JUN 30 2020
City of Ottawa

GRID SCALE CONVERSION
DISTANCES ARE GROUND AND CAN BE CONVERTED TO GRID BY MULTIPLYING BY THE COMBINED SCALE FACTOR OF 0.99994.

LEGEND

Symbol	DENOTES	FOUND MONUMENTS
■	..	FOUND MONUMENTS
□	..	SET MONUMENTS
IB	..	IRON BAR
IBØ	..	ROUND IRON BAR
SIB	..	STANDARD IRON BAR
SSIB	..	SHORT STANDARD IRON BAR
CC	..	CUT CROSS
CP	..	CONCRETE PIN
WIT	..	WITNESS
PIN	..	PROPERTY IDENTIFICATION NUMBER
M/MEAS	..	MEASURED
PROP	..	PROPORTIONED
OU	..	ORIGIN UNKNOWN
SG	..	STANTEC GEOMATICS LTD.
P1	..	PLAN R4-32521
857	..	FAIRHALL MOFFAT & WOODLAND LTD.

OBSERVED REFERENCE POINTS DERIVED FROM GPS OBSERVATIONS USING THE CAN-NET VIRTUAL REFERENCE STATION NETWORK:
UTM ZONE 17, NAD83 (CSRS) (2010.0).
COORDINATES TO URBAN ACCURACY, PER SEC 14(2) OF O.REG. 216/10

POINT ID	NORTHING	EASTING
(A)	5031522.99	365998.59
(B)	5031494.03	366014.43

COORDINATES CANNOT, IN THEMSELVES, BE USED TO RE-ESTABLISH CORNERS OR BOUNDARIES SHOWN ON THIS PLAN.

Stantec Geomatics Ltd.

Stantec

CANADA LANDS SURVEYORS
ONTARIO LAND SURVEYORS
1331 CLYDE AVENUE, SUITE 400
OTTAWA, ONTARIO, K2C 3G4
TEL. 613.722.4420 FAX. 613.722.2799
stantec.com

DRAWN: TMT | CHECKED: CT | PM: CT | FIELD: CA | PROJECT No.: 161613467-1034