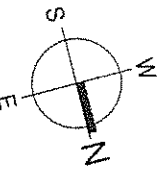
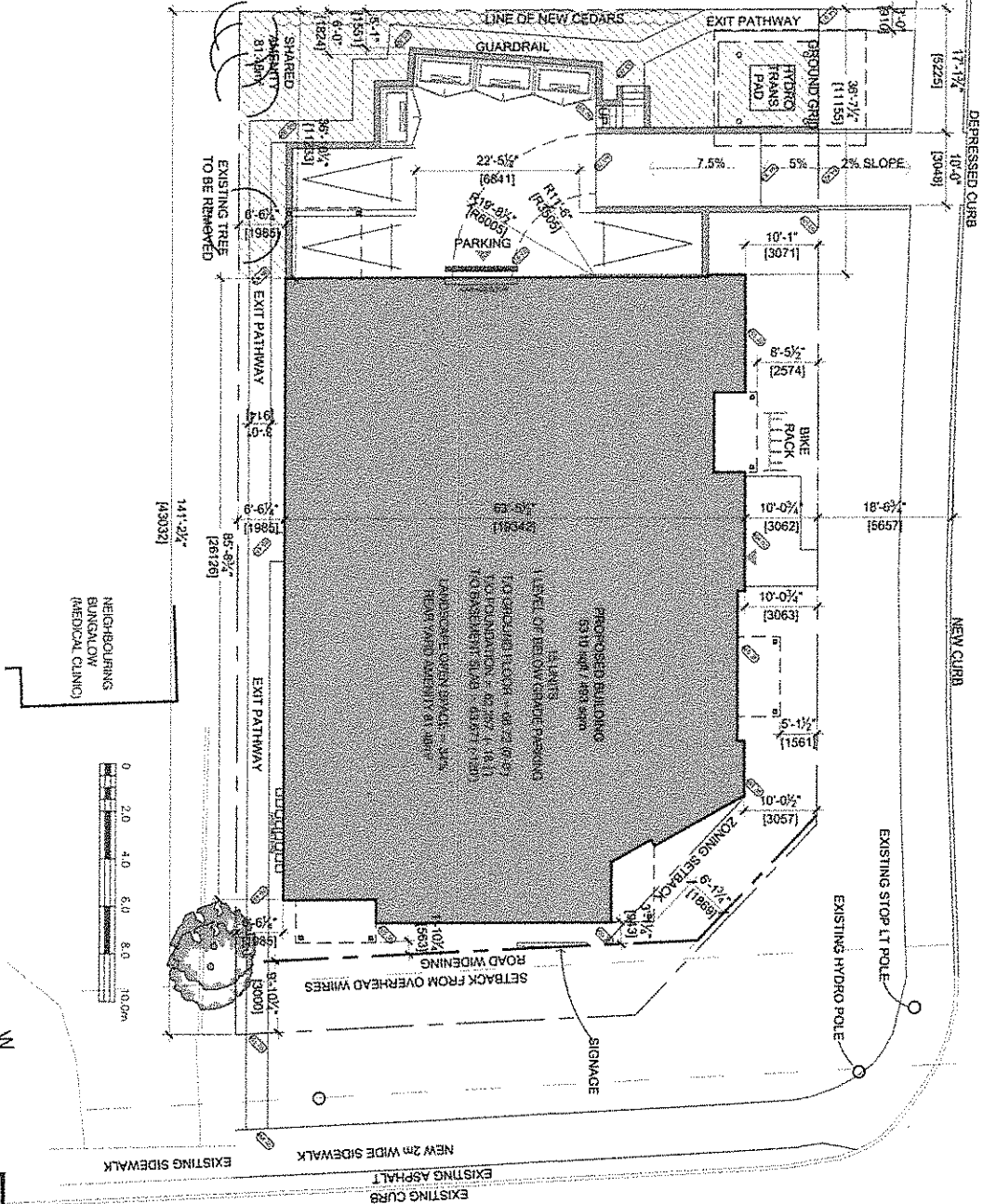


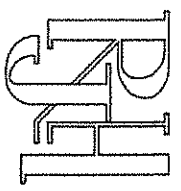
Rosaline J. Hill Architect Inc.

414 Church# Ave. N, Ottawa, ON, K1Z 5C6 • 613-853-2822 www.rph.ca • rosahne@rph.ca



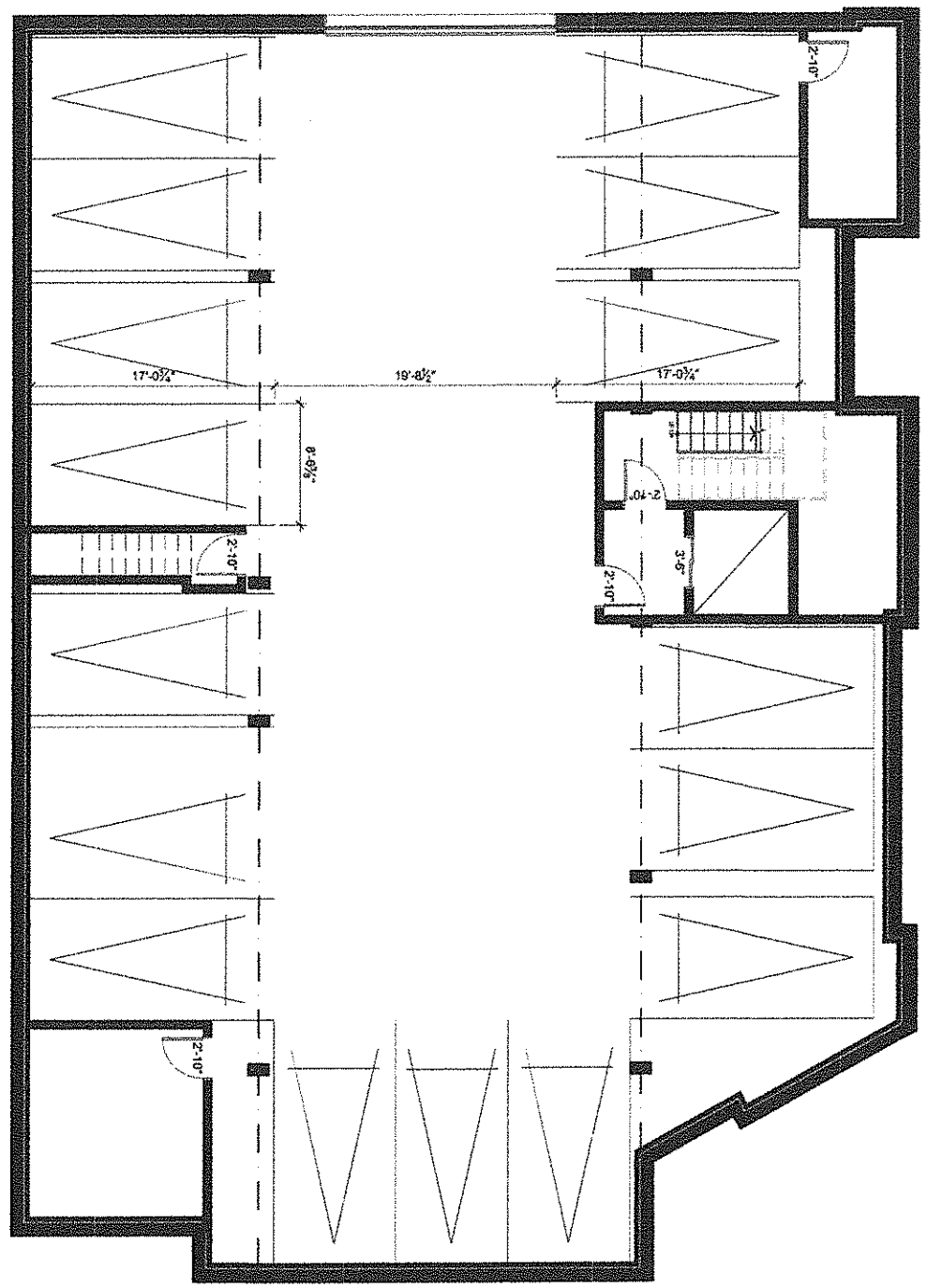
Carling Apartment
 3368 Carling Ave., Ottawa, Ontario, K2H 5A8
 MAY 15, 2020 SCALE: 1/16" = 1'-0"
SITE PLAN

RPH 10/05/19 11:44:30

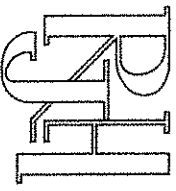


Rosaline J. Hill Architect Inc.

414 Churchill Ave. N, Ottawa, ON, K1Z 5C6 • 613-853-2822
www.rjhil.ca • rosaline@rjhil.ca



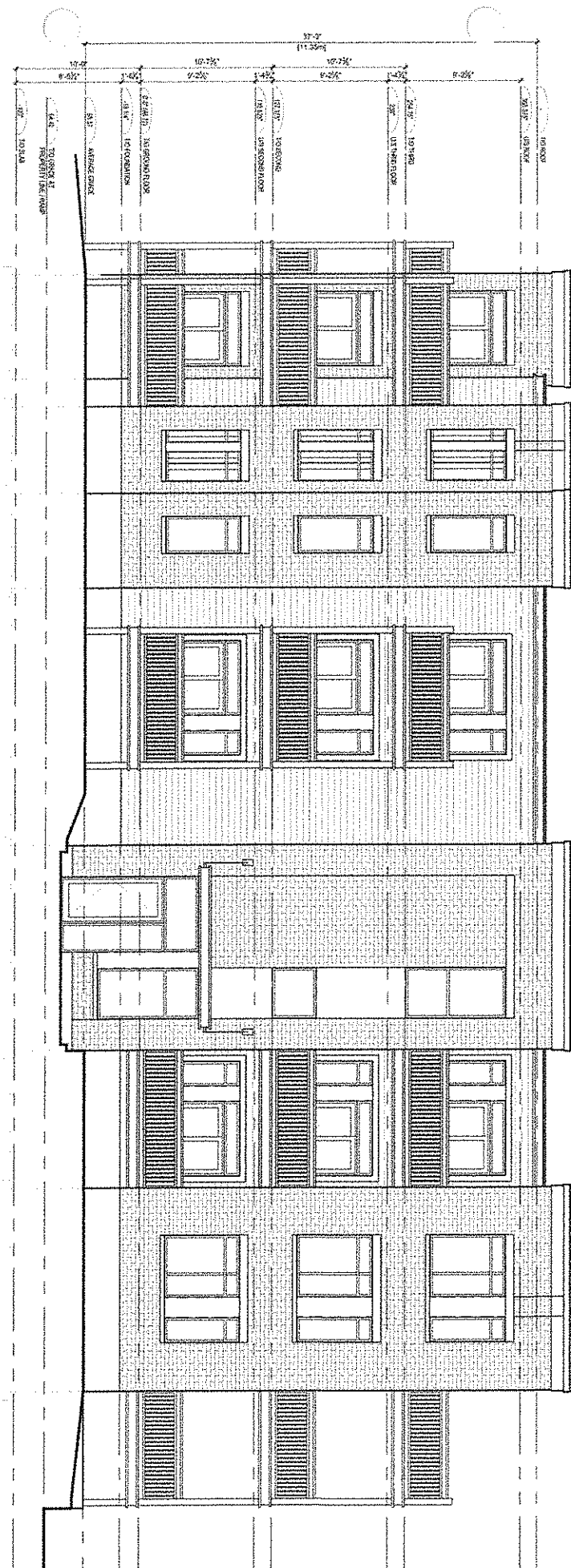
HARE AVENUE RESIDENCE
909 Hare Ave., Ottawa, Ontario, K2A 3J6
MARCH 12, 2020 SCALE: 1/8" = 1'-0"
BASEMENT PLAN



Rosaline J. Hill Architect Inc.

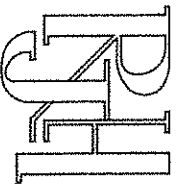
414 Churchill Ave. N. Ottawa,
ON, K1Z 5C6 • 613-853-2822
www.rjhil.ca • rosahill@rjhil.ca

WEST ELEVATION
BEDALE DRIVE



Carling Apartment
3368 Carling Ave., Ottawa, Ontario, K2H 5A8
MAY 14, 2020 SCALE: 1/8" = 1'-0"

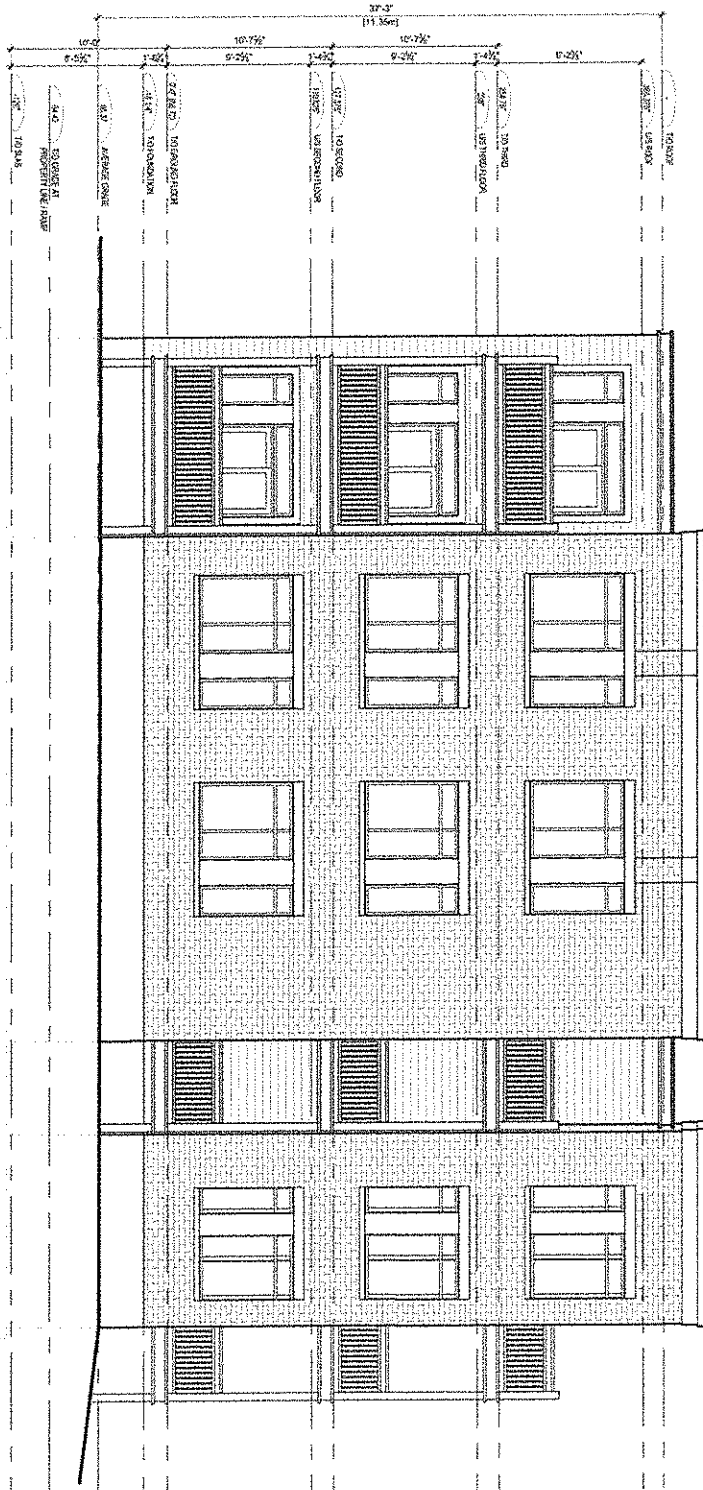
WEST ELEVATION



Rosaline J. Hill Architect Inc.

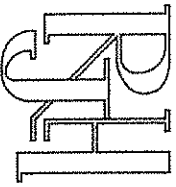
414 Churchill Ave. N. Ottawa,
ON. K1Z 5C6 • 613-853-2822
www.rjhil.ca • rosahill@rjhil.ca

NORTH ELEVATION
CARLING AVENUE



Carling Apartment
3368 Carling Ave., Ottawa, Ontario, K2H 5A8
MAY 13, 2020 SCALE: 1/8" = 1'-0"
NORTH ELEVATION

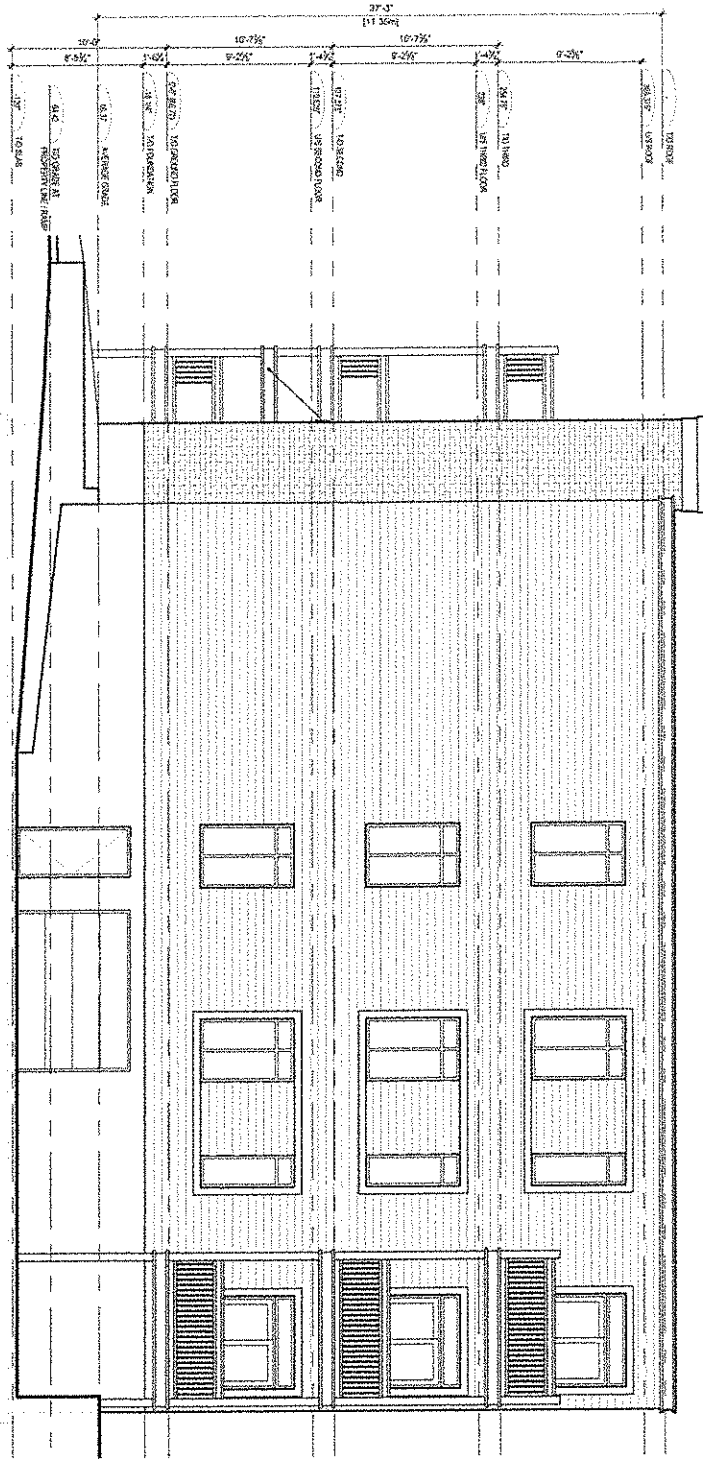
15-01-1103 DWG 13 May 2020



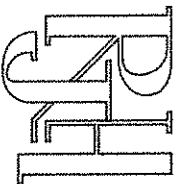
Rosaline J. Hill Architect Inc.

414 Church St. Ave. N. Ottawa,
ON, K1Z 5C6 • 613-853-2822
www.rjhil.ca • rosahill@rjhil.ca

SOUTH ELEVATION



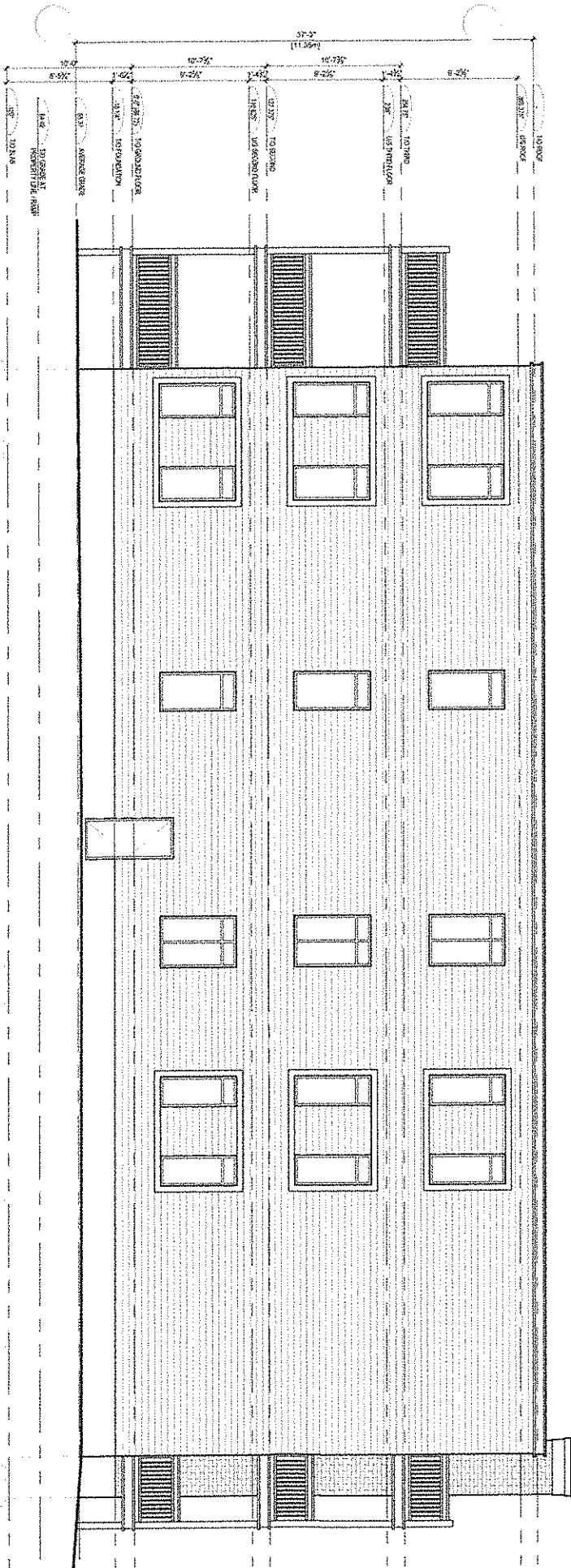
Carling Apartment
3368 Carling Ave., Ottawa, Ontario, K2H 5A8
MAY 14, 2020 SCALE: 1/8" = 1'-0"
SOUTH ELEVATION



Rosaline J. Hill Architect Inc.

414 Churchill Ave. N, Ottawa, ON, K1Z 5C6 • 613-853-2822
www.rjhil.ca • rosaline@rjhil.ca

EAST ELEVATION



Carling Apartment
 3368 Carling Ave., Ottawa, Ontario, K2H 5A8
 MAY 14, 2020 SCALE: 1/8" = 1'-0"

EAST ELEVATION

Distances shown on this plan are ground distances and can be converted to grid distances by multiplying by the combined scale factor of 0.9993.

Readings are MTM 9414, derived from Can-Hat 3.0 Real Time Network GPS observations on reference points A and B, shown herein, having a bearing of 68°42'10"W and are referred to the Central Meridian of MTM Zone 9 (17°30' West Longitude) NAD-83 (original).

Coordinates are derived from Can-Hat 3.0 Real Time Network GPS observations and are referred to the Central Meridian of MTM Zone 9 (17°30' West Longitude) NAD-83 (original).

Coordinate values are to urban accuracy in accordance with O. Reg. 216/10.

Point A Northing 5223374.82 Easting 3572714.83
Point B Northing 5223369.90 Easting 357235.89

Caution: Coordinate control, if in use, should be used to re-establish corners of boundaries shown on this plan.

TOPOGRAPHICAL PLAN OF SURVEY OF

**PART OF LOT 5
REGISTERED PLAN 503
CITY OF OTTAWA**
Surveyed by Anna, O'Sullivan, Vollebæk Ltd.

Scale 1:200



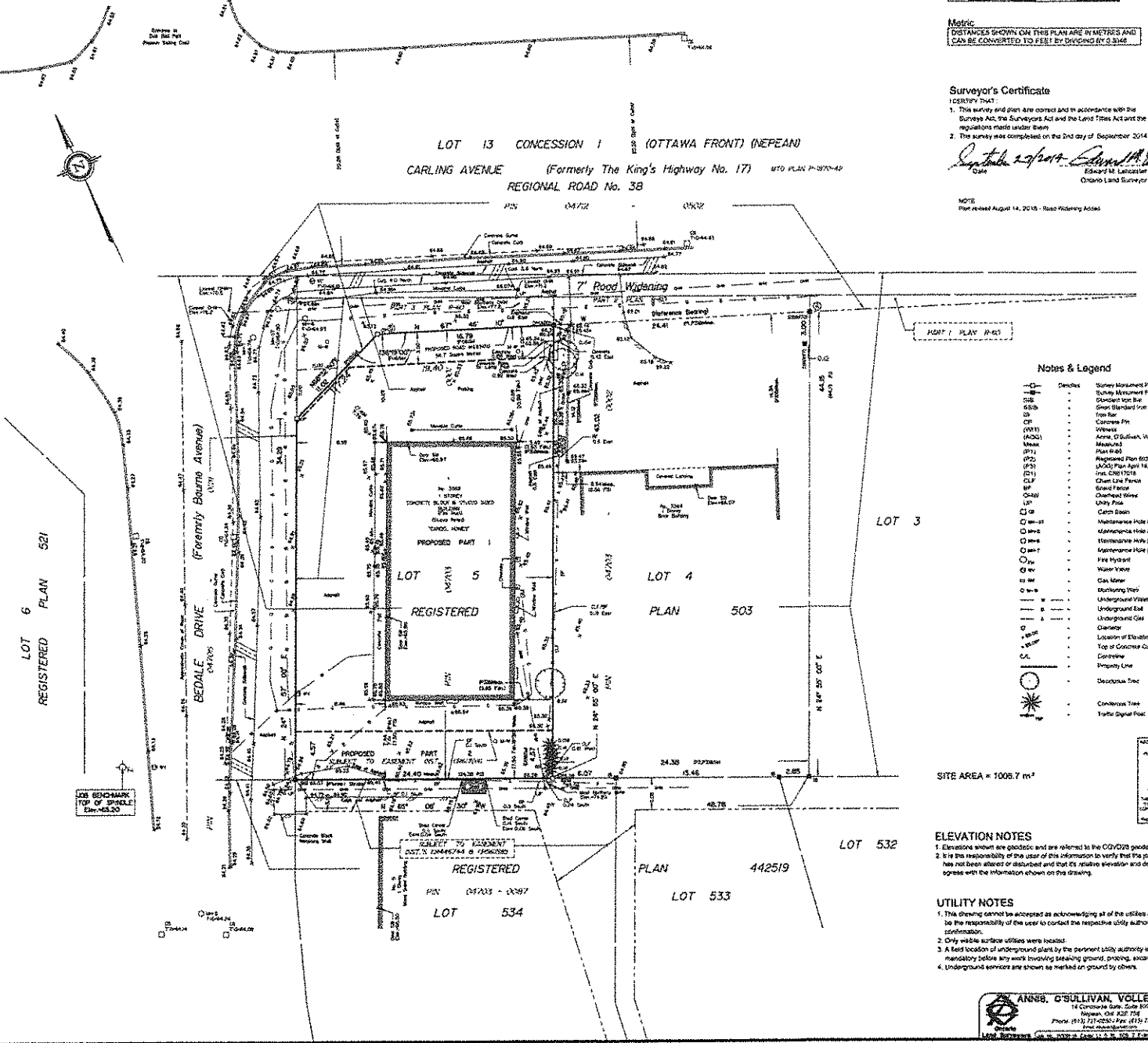
Metric
DISTANCES SHOWN ON THIS PLAN ARE IN METRES AND CAN BE CONVERTED TO FEET BY DIVIDING BY 0.3048

Surveyor's Certificate

- I CERTIFY THAT:
- This survey and plan are correct and in accordance with the Surveyors Act and the Land Titles Act and the regulations made under them.
 - The survey was completed on the 2nd day of September 2014.

Signature
Edward M. Leitch
Ontario Land Surveyor

NOTE
Plan released August 14, 2015 - Road Widening Act



Notes & Legend

| Symbol | Description |
|--------|---------------------------------|
| —○— | Survey Monument Pinned |
| —○— | Survey Monument Found |
| —○— | Standard Iron Bar |
| —○— | Steel Standard Iron Bar |
| —○— | Iron Bar |
| —○— | Concrete Pin |
| —○— | Witness |
| —○— | Arms (O'Sullivan, Vollebæk Ltd) |
| —○— | Measure |
| —○— | Plan (R/S) |
| —○— | Registered Plan 503 |
| —○— | 2000 Plan April 14, 1998 |
| —○— | Int. CONTROL |
| —○— | Chain Line Person |
| —○— | Social Fence |
| —○— | Overhead Line |
| —○— | Utility Pin |
| —○— | Chain Book |
| —○— | Maintenance Hole (Storm Sewer) |
| —○— | Apparent Hole (Utility) |
| —○— | Apparent Hole (Drain) |
| —○— | Apparent Hole (Pipe) |
| —○— | Fire Hydrant |
| —○— | Water Valve |
| —○— | Gas Meter |
| —○— | Scouring Tree |
| —○— | Underground Water |
| —○— | Underground Gas |
| —○— | Underground Electric |
| —○— | Location of Elevation |
| —○— | Top of Concrete Curb Elevation |
| —○— | Groundline |
| —○— | Property Line |
| —○— | Occupancy Tree |
| —○— | Concrete Foot |
| —○— | Traffic Signal Post |

SITE AREA = 1006.7 m²

ELEVATION NOTES

- Elevations shown are geoidic and are referred to the CGVD25 geoid datum.
- It is the responsibility of the user of this information to verify that the job benchmark has not been altered or disturbed and that its relative elevation and description agree with the information shown on the drawing.

UTILITY NOTES

- This drawing cannot be accepted as acknowledging that of the utilities and it will be the responsibility of the user to contact the respective utility authorities for confirmation.
- Only visible surface utilities were located.
- A field location of underground plant by the pertinent utility authority is mandatory before any work involving breaking ground, probing, excavating etc. is done.
- Underground services are shown as marked on ground by others.

ANNS, O'SULLIVAN, VOLLEBEK LTD.
14 Catherine Gate, Suite 800
Ottawa, Ont. K2T 7T6
Phone (613) 737-0260 Fax (613) 737-1202
www.annso.com