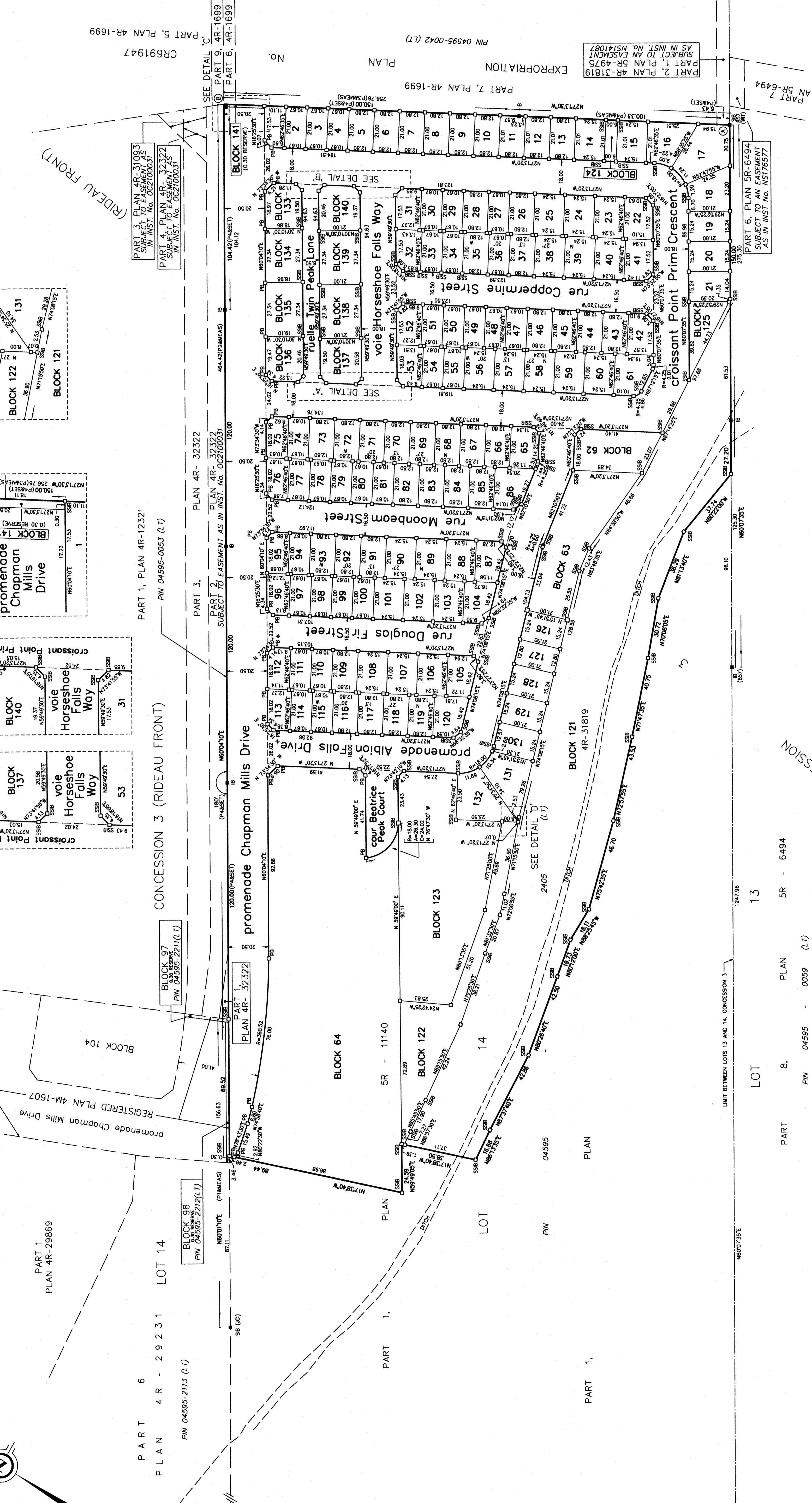


| LOT/BLOCK | RADIUS | ARC | CHORD | BEARING |
|-----------|--------|------|-------|---------------|
| LOT 15 | 18.00 | 9.00 | 6.30 | N 12°54'20" E |
| LOT 16 | 18.00 | 7.20 | 7.15 | N 48°31'50" W |
| LOT 17 | 18.00 | 4.20 | 10.80 | N 89°47'00" W |
| LOT 18 | 18.00 | 2.10 | 21.60 | N 89°47'00" W |
| LOT 19 | 18.00 | 0.60 | 64.80 | N 89°47'00" W |
| LOT 20 | 18.00 | 0.60 | 64.80 | N 89°47'00" W |
| LOT 21 | 18.00 | 0.60 | 64.80 | N 89°47'00" W |
| LOT 22 | 18.00 | 0.60 | 64.80 | N 89°47'00" W |
| LOT 23 | 18.00 | 0.60 | 64.80 | N 89°47'00" W |
| LOT 24 | 18.00 | 0.60 | 64.80 | N 89°47'00" W |
| LOT 25 | 18.00 | 0.60 | 64.80 | N 89°47'00" W |
| LOT 26 | 18.00 | 0.60 | 64.80 | N 89°47'00" W |
| LOT 27 | 18.00 | 0.60 | 64.80 | N 89°47'00" W |
| LOT 28 | 18.00 | 0.60 | 64.80 | N 89°47'00" W |
| LOT 29 | 18.00 | 0.60 | 64.80 | N 89°47'00" W |
| LOT 30 | 18.00 | 0.60 | 64.80 | N 89°47'00" W |
| LOT 31 | 18.00 | 0.60 | 64.80 | N 89°47'00" W |
| LOT 32 | 18.00 | 0.60 | 64.80 | N 89°47'00" W |
| LOT 33 | 18.00 | 0.60 | 64.80 | N 89°47'00" W |
| LOT 34 | 18.00 | 0.60 | 64.80 | N 89°47'00" W |
| LOT 35 | 18.00 | 0.60 | 64.80 | N 89°47'00" W |
| LOT 36 | 18.00 | 0.60 | 64.80 | N 89°47'00" W |
| LOT 37 | 18.00 | 0.60 | 64.80 | N 89°47'00" W |
| LOT 38 | 18.00 | 0.60 | 64.80 | N 89°47'00" W |
| LOT 39 | 18.00 | 0.60 | 64.80 | N 89°47'00" W |
| LOT 40 | 18.00 | 0.60 | 64.80 | N 89°47'00" W |
| LOT 41 | 18.00 | 0.60 | 64.80 | N 89°47'00" W |
| LOT 42 | 18.00 | 0.60 | 64.80 | N 89°47'00" W |
| LOT 43 | 18.00 | 0.60 | 64.80 | N 89°47'00" W |
| LOT 44 | 18.00 | 0.60 | 64.80 | N 89°47'00" W |
| LOT 45 | 18.00 | 0.60 | 64.80 | N 89°47'00" W |
| LOT 46 | 18.00 | 0.60 | 64.80 | N 89°47'00" W |
| LOT 47 | 18.00 | 0.60 | 64.80 | N 89°47'00" W |
| LOT 48 | 18.00 | 0.60 | 64.80 | N 89°47'00" W |
| LOT 49 | 18.00 | 0.60 | 64.80 | N 89°47'00" W |
| LOT 50 | 18.00 | 0.60 | 64.80 | N 89°47'00" W |
| LOT 51 | 18.00 | 0.60 | 64.80 | N 89°47'00" W |
| LOT 52 | 18.00 | 0.60 | 64.80 | N 89°47'00" W |
| LOT 53 | 18.00 | 0.60 | 64.80 | N 89°47'00" W |
| LOT 54 | 18.00 | 0.60 | 64.80 | N 89°47'00" W |
| LOT 55 | 18.00 | 0.60 | 64.80 | N 89°47'00" W |
| LOT 56 | 18.00 | 0.60 | 64.80 | N 89°47'00" W |
| LOT 57 | 18.00 | 0.60 | 64.80 | N 89°47'00" W |
| LOT 58 | 18.00 | 0.60 | 64.80 | N 89°47'00" W |
| LOT 59 | 18.00 | 0.60 | 64.80 | N 89°47'00" W |
| LOT 60 | 18.00 | 0.60 | 64.80 | N 89°47'00" W |
| LOT 61 | 18.00 | 0.60 | 64.80 | N 89°47'00" W |
| LOT 62 | 18.00 | 0.60 | 64.80 | N 89°47'00" W |
| LOT 63 | 18.00 | 0.60 | 64.80 | N 89°47'00" W |
| LOT 64 | 18.00 | 0.60 | 64.80 | N 89°47'00" W |
| LOT 65 | 18.00 | 0.60 | 64.80 | N 89°47'00" W |
| LOT 66 | 18.00 | 0.60 | 64.80 | N 89°47'00" W |
| LOT 67 | 18.00 | 0.60 | 64.80 | N 89°47'00" W |
| LOT 68 | 18.00 | 0.60 | 64.80 | N 89°47'00" W |
| LOT 69 | 18.00 | 0.60 | 64.80 | N 89°47'00" W |
| LOT 70 | 18.00 | 0.60 | 64.80 | N 89°47'00" W |
| LOT 71 | 18.00 | 0.60 | 64.80 | N 89°47'00" W |
| LOT 72 | 18.00 | 0.60 | 64.80 | N 89°47'00" W |
| LOT 73 | 18.00 | 0.60 | 64.80 | N 89°47'00" W |
| LOT 74 | 18.00 | 0.60 | 64.80 | N 89°47'00" W |
| LOT 75 | 18.00 | 0.60 | 64.80 | N 89°47'00" W |
| LOT 76 | 18.00 | 0.60 | 64.80 | N 89°47'00" W |
| LOT 77 | 18.00 | 0.60 | 64.80 | N 89°47'00" W |
| LOT 78 | 18.00 | 0.60 | 64.80 | N 89°47'00" W |
| LOT 79 | 18.00 | 0.60 | 64.80 | N 89°47'00" W |
| LOT 80 | 18.00 | 0.60 | 64.80 | N 89°47'00" W |
| LOT 81 | 18.00 | 0.60 | 64.80 | N 89°47'00" W |
| LOT 82 | 18.00 | 0.60 | 64.80 | N 89°47'00" W |
| LOT 83 | 18.00 | 0.60 | 64.80 | N 89°47'00" W |
| LOT 84 | 18.00 | 0.60 | 64.80 | N 89°47'00" W |
| LOT 85 | 18.00 | 0.60 | 64.80 | N 89°47'00" W |
| LOT 86 | 18.00 | 0.60 | 64.80 | N 89°47'00" W |
| LOT 87 | 18.00 | 0.60 | 64.80 | N 89°47'00" W |
| LOT 88 | 18.00 | 0.60 | 64.80 | N 89°47'00" W |
| LOT 89 | 18.00 | 0.60 | 64.80 | N 89°47'00" W |
| LOT 90 | 18.00 | 0.60 | 64.80 | N 89°47'00" W |
| LOT 91 | 18.00 | 0.60 | 64.80 | N 89°47'00" W |
| LOT 92 | 18.00 | 0.60 | 64.80 | N 89°47'00" W |
| LOT 93 | 18.00 | 0.60 | 64.80 | N 89°47'00" W |
| LOT 94 | 18.00 | 0.60 | 64.80 | N 89°47'00" W |
| LOT 95 | 18.00 | 0.60 | 64.80 | N 89°47'00" W |
| LOT 96 | 18.00 | 0.60 | 64.80 | N 89°47'00" W |
| LOT 97 | 18.00 | 0.60 | 64.80 | N 89°47'00" W |
| LOT 98 | 18.00 | 0.60 | 64.80 | N 89°47'00" W |
| LOT 99 | 18.00 | 0.60 | 64.80 | N 89°47'00" W |
| LOT 100 | 18.00 | 0.60 | 64.80 | N 89°47'00" W |
| LOT 101 | 18.00 | 0.60 | 64.80 | N 89°47'00" W |
| LOT 102 | 18.00 | 0.60 | 64.80 | N 89°47'00" W |
| LOT 103 | 18.00 | 0.60 | 64.80 | N 89°47'00" W |
| LOT 104 | 18.00 | 0.60 | 64.80 | N 89°47'00" W |
| LOT 105 | 18.00 | 0.60 | 64.80 | N 89°47'00" W |
| LOT 106 | 18.00 | 0.60 | 64.80 | N 89°47'00" W |
| LOT 107 | 18.00 | 0.60 | 64.80 | N 89°47'00" W |
| LOT 108 | 18.00 | 0.60 | 64.80 | N 89°47'00" W |
| LOT 109 | 18.00 | 0.60 | 64.80 | N 89°47'00" W |
| LOT 110 | 18.00 | 0.60 | 64.80 | N 89°47'00" W |
| LOT 111 | 18.00 | 0.60 | 64.80 | N 89°47'00" W |
| LOT 112 | 18.00 | 0.60 | 64.80 | N 89°47'00" W |
| LOT 113 | 18.00 | 0.60 | 64.80 | N 89°47'00" W |
| LOT 114 | 18.00 | 0.60 | 64.80 | N 89°47'00" W |
| LOT 115 | 18.00 | 0.60 | 64.80 | N 89°47'00" W |
| LOT 116 | 18.00 | 0.60 | 64.80 | N 89°47'00" W |
| LOT 117 | 18.00 | 0.60 | 64.80 | N 89°47'00" W |
| LOT 118 | 18.00 | 0.60 | 64.80 | N 89°47'00" W |
| LOT 119 | 18.00 | 0.60 | 64.80 | N 89°47'00" W |
| LOT 120 | 18.00 | 0.60 | 64.80 | N 89°47'00" W |
| LOT 121 | 18.00 | 0.60 | 64.80 | N 89°47'00" W |
| LOT 122 | 18.00 | 0.60 | 64.80 | N 89°47'00" W |
| LOT 123 | 18.00 | 0.60 | 64.80 | N 89°47'00" W |
| LOT 124 | 18.00 | 0.60 | 64.80 | N 89°47'00" W |
| LOT 125 | 18.00 | 0.60 | 64.80 | N 89°47'00" W |
| LOT 126 | 18.00 | 0.60 | 64.80 | N 89°47'00" W |
| LOT 127 | 18.00 | 0.60 | 64.80 | N 89°47'00" W |
| LOT 128 | 18.00 | 0.60 | 64.80 | N 89°47'00" W |
| LOT 129 | 18.00 | 0.60 | 64.80 | N 89°47'00" W |
| LOT 130 | 18.00 | 0.60 | 64.80 | N 89°47'00" W |
| LOT 131 | 18.00 | 0.60 | 64.80 | N 89°47'00" W |
| LOT 132 | 18.00 | 0.60 | 64.80 | N 89°47'00" W |
| LOT 133 | 18.00 | 0.60 | 64.80 | N 89°47'00" W |
| LOT 134 | 18.00 | 0.60 | 64.80 | N 89°47'00" W |
| LOT 135 | 18.00 | 0.60 | 64.80 | N 89°47'00" W |
| LOT 136 | 18.00 | 0.60 | 64.80 | N 89°47'00" W |
| LOT 137 | 18.00 | 0.60 | 64.80 | N 89°47'00" W |
| LOT 138 | 18.00 | 0.60 | 64.80 | N 89°47'00" W |
| LOT 139 | 18.00 | 0.60 | 64.80 | N 89°47'00" W |
| LOT 140 | 18.00 | 0.60 | 64.80 | N 89°47'00" W |
| LOT 141 | 18.00 | 0.60 | 64.80 | N 89°47'00" W |
| LOT 142 | 18.00 | 0.60 | 64.80 | N 89°47'00" W |
| LOT 143 | 18.00 | 0.60 | 64.80 | N 89°47'00" W |
| LOT 144 | 18.00 | 0.60 | 64.80 | N 89°47'00" W |
| LOT 145 | 18.00 | 0.60 | 64.80 | N 89°47'00" W |
| LOT 146 | 18.00 | 0.60 | 64.80 | N 89°47'00" W |
| LOT 147 | 18.00 | 0.60 | 64.80 | N 89°47'00" W |
| LOT 148 | 18.00 | 0.60 | 64.80 | N 89°47'00" W |
| LOT 149 | 18.00 | 0.60 | 64.80 | N 89°47'00" W |
| LOT 150 | 18.00 | 0.60 | 64.80 | N 89°47'00" W |
| LOT 151 | 18.00 | 0.60 | 64.80 | N 89°47'00" W |
| LOT 152 | 18.00 | 0.60 | 64.80 | N 89°47'00" W |
| LOT 153 | 18.00 | 0.60 | 64.80 | N 89°47'00" W |
| LOT 154 | 18.00 | 0.60 | 64.80 | N 89°47'00" W |
| LOT 155 | 18.00 | 0.60 | 64.80 | N 89°47'00" W |
| LOT 156 | 18.00 | 0.60 | 64.80 | N 89°47'00" W |
| LOT 157 | 18.00 | 0.60 | 64.80 | N 89°47'00" W |
| LOT 158 | 18.00 | 0.60 | 64.80 | N 89°47'00" W |
| LOT 159 | 18.00 | 0.60 | 64.80 | N 89°47'00" W |
| LOT 160 | 18.00 | 0.60 | 64.80 | N 89°47'00" W |



PLAN 4M-1645

I CERTIFY THAT THIS PLAN IS REGISTERED IN THE LAND REGISTRY OFFICE FOR THE LAND TITLES DIVISION OF OTTAWA-CARLETON (No. 4) AT 10:00 A.M. ON THE 17th DAY OF DECEMBER, 2019 AND ENTERED IN THE PARCEL REGISTER FOR PROPERTY IDENTIFIER 04595-2405 AND THE REQUIRED CONSENTS ARE REGISTERED AS PLAN DOCUMENT No. 04172333.

L. MASENEAU
LAND REGISTRAR

THIS PLAN COMPRISES PART OF PIN 04595-2405 (L1).

**PLAN OF SUBDIVISION OF
PART OF LOT 14
CONCESSION 3 (RIDEAU FRONT)
GEOGRAPHIC TOWNSHIP OF NEPEAN
NOW IN THE
CITY OF OTTAWA**

SCALE 1 : 1000

J.D. BARNES LIMITED

METRIC DISTANCES AND/OR COORDINATES SHOWN ON THIS PLAN ARE IN METRES AND CAN BE CONVERTED TO FEET BY DIVIDING BY 0.3048.

OWNER'S CERTIFICATE - PLAN OF SUBDIVISION

1. THIS IS TO CERTIFY THAT THE METRIC DISTANCES AND/OR COORDINATES SHOWN ON THIS PLAN ARE IN METRES AND CAN BE CONVERTED TO FEET BY DIVIDING BY 0.3048.

2. THE STREETS ARE DEDICATED TO CITY OF OTTAWA AS PUBLIC HIGHWAY.

DATED THIS 17th DAY OF DECEMBER, 2019

BARNES CONSERVANCY DEVELOPMENT CORPORATION

Frank Carro
President

I HAVE THE AUTHORITY TO BIND THE CORPORATION

NOTES

BEARINGS AND DISTANCES DERIVED FROM OBSERVED REFERENCE POINTS A AND B, BY REAL TIME NETWORK (RTN) OBSERVATIONS, WITH ZONE 9, NAD83 (CSRS) (2010).

THE DISTANCES AND/OR COORDINATES CAN BE CONVERTED TO FEET BY MULTIPLYING BY THE COMBINED SCALE FACTOR OF 0.3048.

INTEGRATION DATA

OBSERVED REFERENCE POINTS (ORP): WITH ZONE 9, NAD83 (CSRS) (2010).

COORDINATES TO URBAN ACCURACY PER SECTION 14 (2) OF OREG 216/10.

POINT ID EASTING NORTHING

ORP A 363 753.67 5 013 715.21

ORP B 363 636.22 5 013 943.52

ORP C 363 636.22 5 013 943.52

ORP D 363 636.22 5 013 943.52

ORP E 363 636.22 5 013 943.52

ORP F 363 636.22 5 013 943.52

ORP G 363 636.22 5 013 943.52

ORP H 363 636.22 5 013 943.52

ORP I 363 636.22 5 013 943.52

ORP J 363 636.22 5 013 943.52

ORP K 363 636.22 5 013 943.52

ORP L 363 636.22 5 013 943.52

ORP M 363 636.22 5 013 943.52

ORP N 363 636.22 5 013 943.52

ORP O 363 636.22 5 013 943.52

ORP P 363 636.22 5 013 943.52

ORP Q 363 636.22 5 013 943.52

ORP R 363 636.22 5 013 943.52

ORP S 363 636.22 5 013 943.52

ORP T 363 636.22 5 013 943.52

ORP U 363 636.22 5 013 943.52

ORP V 363 636.22 5 013 943.52

ORP W 363 636.22 5 013 943.52

ORP X 363 636.22 5 013 943.52

ORP Y 363 636.22 5 013 943.52

ORP Z 363 636.22 5 013 943.52

ORP AA 363 636.22 5 013 943.52

ORP AB 363 636.22 5 013 943.52

ORP AC 363 636.22 5 013 943.52

ORP AD 363 636.22 5 013 943.52

ORP AE 363 636.22 5 013 943.52

ORP AF 363 636.22 5 013 943.52

ORP AG 363 636.22 5 013 943.52

ORP AH 363 636.22 5 013 943.52

ORP AI 363 636.22 5 013 943.52

ORP AJ 363 636.22 5 013 943.52

ORP AK 363 636.22 5 013 943.52

ORP AL 363 636.22 5 013 943.52

ORP AM 363 636.22 5 013 943.52

ORP AN 363 636.22 5 013 943.52

ORP AO 363 636.22 5 013 943.52

ORP AP 363 636.22 5 013 943.52

ORP AQ 363 636.22 5 013 943.52

ORP AR 363 636.22 5 013 943.52

ORP AS 363 636.22 5 013 943.52

ORP AT 363 636.22 5 013 943.52

ORP AU 363 636.22 5 013 943.52

ORP AV 363 636.22 5 013 943.52

ORP AW 363 636.22 5 013 943.52

ORP AX 363 636.22 5 013 943.52

ORP AY 363 636.22 5 013 943.52

ORP AZ 363 636.22 5 013 943.52

ORP BA 363 636.22 5 013 943.52

ORP BB 363 636.22 5 013 943.52

ORP BC 363 636.22 5 013 943.52

ORP BD 363 636.22 5 013 943.52

ORP BE 363 636.22 5 013 943.52

ORP BF 363 636.22 5 013 943.52

ORP BG 363 636.22 5 013 943.52

ORP BH 363 636.22 5 013 943.52

ORP BI 363 636.22 5 013 943.52

ORP BJ 363 636.22 5 013 943.52

ORP BK 363 636.22 5 013 943.52

ORP BL 363 636.22 5 013 943.52

ORP BM 363 636.22 5 013 943.52

ORP BN 363 636.22 5 013 943.52

ORP BO 363 636.22 5 013 943.52

ORP BP 363 636.22 5 013 943.52

ORP BQ 363 636.22 5 013 943.52

ORP BR 363 636.22 5 013 943.52

ORP BS 363 636.22 5 013 943.52

ORP BT 363 636.22 5 013 943.52

ORP BU 363 636.22 5 013 943.52

ORP BV 363 636.22 5 013 943.52

ORP BW 363 636.22 5 013 943.52

ORP BX 363 636.22 5 013 943.52

ORP BY 363 636.22 5 013 943.52

ORP BZ 363 636.22 5 013 943.52

ORP CA 363 636.22 5 013 943.52

ORP CB 363 636.22 5 013 943.52

ORP CC 363 636.22 5 013 943.52

ORP CD 363 636.22 5 013 943.52

ORP CE 363 636.22 5 013 943.52

ORP CF 363 636.22 5 013 943.52

ORP