

Distances shown on this plan are ground distances and can be converted to grid distances by multiplying by the combined scale factor of 0.999933.

Bearings are grid, derived from Can-Net 2016 Real Time Network GPS observations on reference points A and B, shown hereon, having a bearing of N66°29'20"W and are referenced to Specified Control Points 01919791338 and 01919871649, MTM Zone 9 (76°30' West Longitude) NAD-83 (original).

For comparison purposes, bearings shown on Plans P2, P3, P4, and P5 are astronomic bearings.

Coordinates are derived from Can-Net 2016 Real Time Network GPS observations referenced to Specified Control Points 01919791338 and 01919871649, MTM Zone 9 (76°30' West Longitude) NAD-83 (original).

Coordinate values are to urban accuracy in accordance with O. Reg. 216/10.

.01919791338	Northing	5006055.96	Easting	346140.91
.01919871649	Northing	5007189.87	Easting	372435.05
. Point A	Northing	5028686.42	Easting	364604.64
. Point B	Northing	5028710.74	Easting	364660.53

Caution: Coordinates cannot, in themselves, be used to re-establish corners or boundaries shown on this plan.

Notes & Legend

—□—	Denotes	Survey Monument Planted
—■—	"	Survey Monument Found
SSIB	"	Short Standard Iron Bar
IB	"	Iron Bar
IBØ	"	Round Iron Bar
CC	"	Cut Cross
(WIT)	"	Witness
(AOG)	"	Annis, O'Sullivan, Vollebakk Ltd.
Meas.	"	Measured
(P1)	"	Registered Plan 4M-48
(P2)	"	Plan 4R-23867
(P3)	"	(857) Plan, March 16, 2007
(P4)	"	(AOG) Plan, February 18, 1992
(P5)	"	(AOG) Plan, April 4, 2003
BF	"	Board Fence
WTL	"	Centreline of Wall ± to line

SCHEDULE				
AREA (Sq.m.)	PART	LOT	PLAN	PIN
232.3	1	ALL OF 2152	4M-48	ALL OF 04028-0136
232.0	2			

I REQUIRE THIS PLAN TO BE DEPOSITED UNDER THE LAND TITLES ACT.

DATE: _____

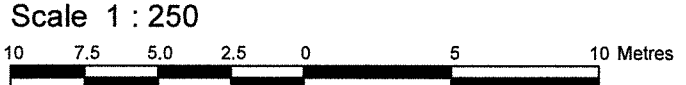
ANDRE ROY
ONTARIO LAND SURVEYOR

PLAN 4R-

RECEIVED AND DEPOSITED DATE: _____

Committee of Adjustment
APR 06 2020
City of Ottawa
REPRESENTATIVE FOR
LAND REGISTRAR FOR THE
LAND TITLES DIVISION OF
OTTAWA-CARLETON NO. 4.

**Draft PLAN OF SURVEY OF
LOT 2152
REGISTERED PLAN 4M-48
CITY OF OTTAWA**
Surveyed by Annis, O'Sullivan, Vollebakk Ltd.

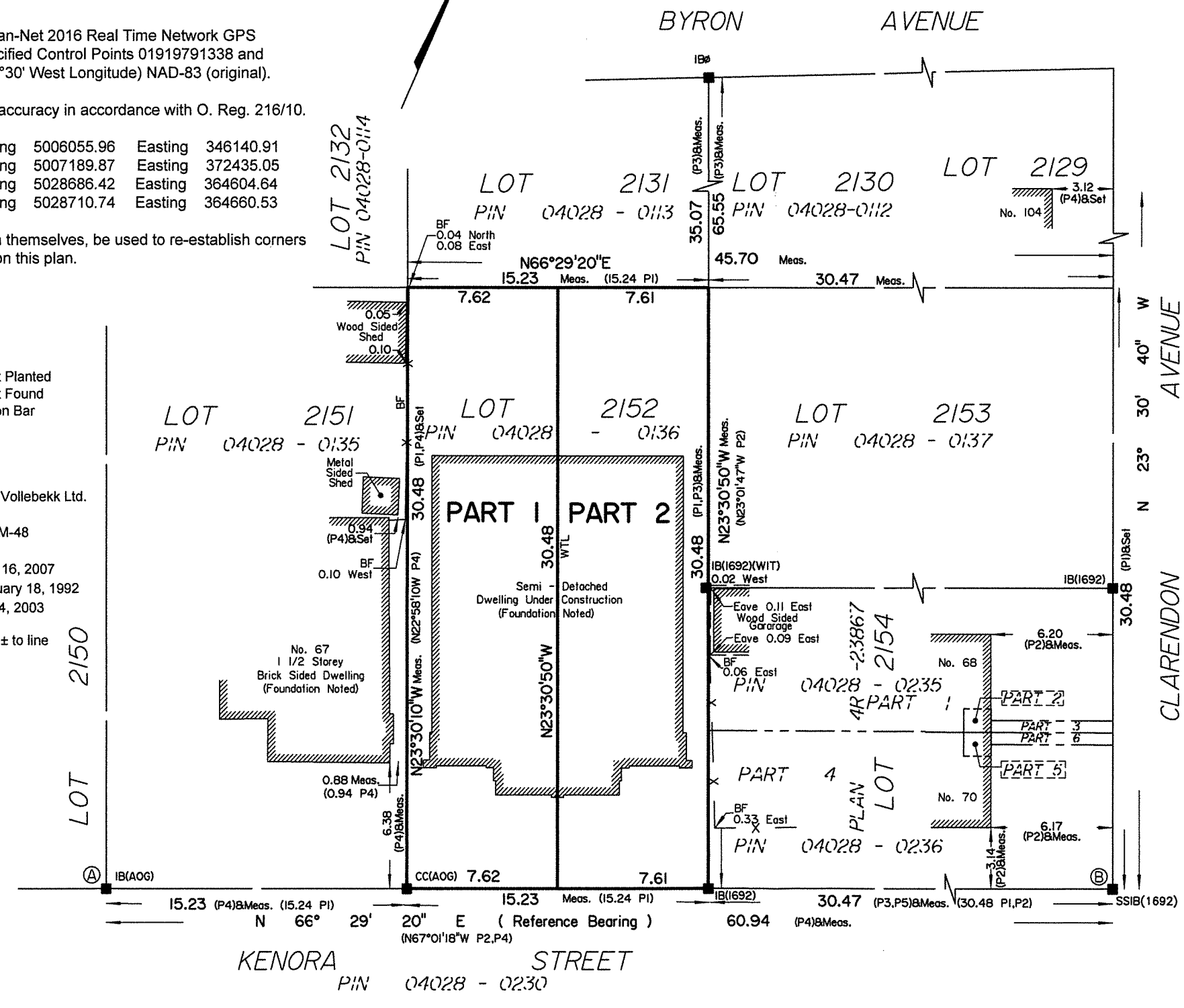


Metric
DISTANCES AND COORDINATES SHOWN ON THIS PLAN ARE IN METRES AND CAN BE CONVERTED TO FEET BY DIVIDING BY 0.3048.

Surveyor's Certificate
I CERTIFY THAT :
1. This survey and plan are correct and in accordance with the Surveys Act, the Surveyors Act and the Land Titles Act and the regulations made under them.
2. The survey was completed on the ___ day of _____, 2020.

Date _____ Andre Roy
Ontario Land Surveyor

Committee of Adjustment
APR 06 2020
City of Ottawa



Y:\2020\17637-20_Dinardo_65_Kenora\Drawings\17637-20 Dinardo L12152 4M-48 R D1.dwg

ANNIS, O'SULLIVAN, VOLLEBEKK LTD.
14 Concourse Gate, Suite 500
Nepean, Ont. K2E 7S6
Phone: (613) 727-0850 / Fax: (613) 727-1079
Email: Nepean@aovltd.com
Ontario Land Surveyors Job No. 17637-20 Dinardo L12152 4M-48 R D1 AR