

**TOPOGRAPHIC PLAN OF SURVEY OF
LOT 7
REGISTERED PLAN 291418
CITY OF OTTAWA**

PAVLEY, SMITH & DENNIS SURVEYING LTD. 2019
Scale: 1:200
Metric Note
Distances on this plan are in metric units (1:200) unless otherwise indicated by the drawing by statute.

Metric Note
Distances on this plan are in metric units (1:200) unless otherwise indicated by the drawing by statute.

Distance Note
Distances on this plan are in metric units (1:200) unless otherwise indicated by the drawing by statute.

Setting Note
Distances on this plan are in metric units (1:200) unless otherwise indicated by the drawing by statute.

Classification Notes
Distances on this plan are in metric units (1:200) unless otherwise indicated by the drawing by statute.

Utility Notes
Distances on this plan are in metric units (1:200) unless otherwise indicated by the drawing by statute.

NOTES
Distances on this plan are in metric units (1:200) unless otherwise indicated by the drawing by statute.

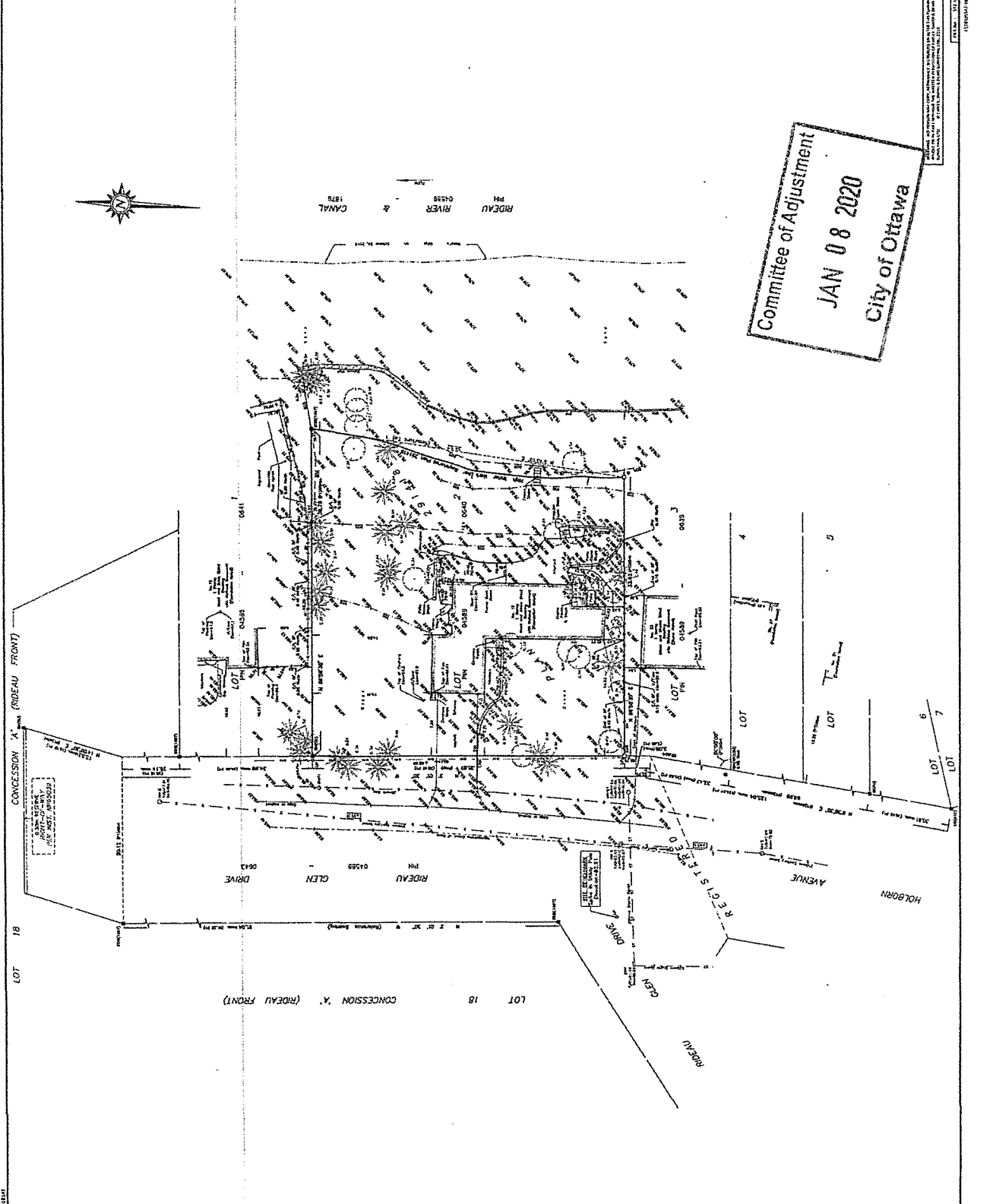
Notes & Legend
Distances on this plan are in metric units (1:200) unless otherwise indicated by the drawing by statute.

PROFESSIONAL SURVEYOR
2104286
PAVLEY, SMITH & DENNIS SURVEYING LTD.
1000 BROADVIEW AVENUE, SUITE 100
OTTAWA, ONTARIO K1K 1R1
TEL: 613-735-1234
FAX: 613-735-5678

Surveyor's Certificate
I, the undersigned, being a duly qualified and licensed Surveyor, do hereby certify that the foregoing is a true and correct copy of the original plan as filed in my office on the 15th day of January, 2020.

PAVLEY, SMITH & DENNIS SURVEYING LTD.
1000 BROADVIEW AVENUE, SUITE 100
OTTAWA, ONTARIO K1K 1R1
TEL: 613-735-1234
FAX: 613-735-5678

Committee of Adjustment
JAN 08 2020
City of Ottawa



1000 BROADVIEW AVENUE, SUITE 100
OTTAWA, ONTARIO K1K 1R1
TEL: 613-735-1234
FAX: 613-735-5678