

Page No.	Area (m ²)
Page 1 of 5	2713
Page 2 of 5	2620
Page 3 of 5	1274
Page 4 of 5	164

REQUIRE THIS PLAN TO BE DEPOSITED UNDER THE LAND TITLES ACT.
 RECEIVED AND DEPOSITED DATE: _____
 E.L. HERVEY
 ONTARIO LAND SURVEYOR

PLAN	LOT	PLAN	PIN
1	PART OF LOT 12		
2	PART OF LOT 12		
3	PART OF LOT 12		
4	PART OF LOT 12	42482	PART OF 04215-0116
5	PART OF LOT 12		
6	PART OF LOT 12		
7	PART OF LOT 12		
8	PART OF LOT 12		

PLAN OF SURVEY OF
 PARTS 1, 2, 3 & 4 OF PIN 04215-0116
 PARTS 5 & 6 OF PIN 04215-0116

REPRESENTATIVE FOR THE LAND TITLES DIVISION OF OTTAWA-CARLETON NO. 4.
 SCHEDULE

PLAN OF SURVEY OF
 PARTS OF LOTS 11 AND 12
 (SOUTH YORK STREET)
 REGISTERED PLAN 42482
 CITY OF OTTAWA
 Surveyed by Anis, O'Sullivan, Vollebek Ltd.

Scale 1:100
 DISTANCES AND COORDINATES SHOWN ON THIS PLAN ARE IN METRES AND CAN BE CONVERTED TO FEET BY DIVIDING BY 0.3048.

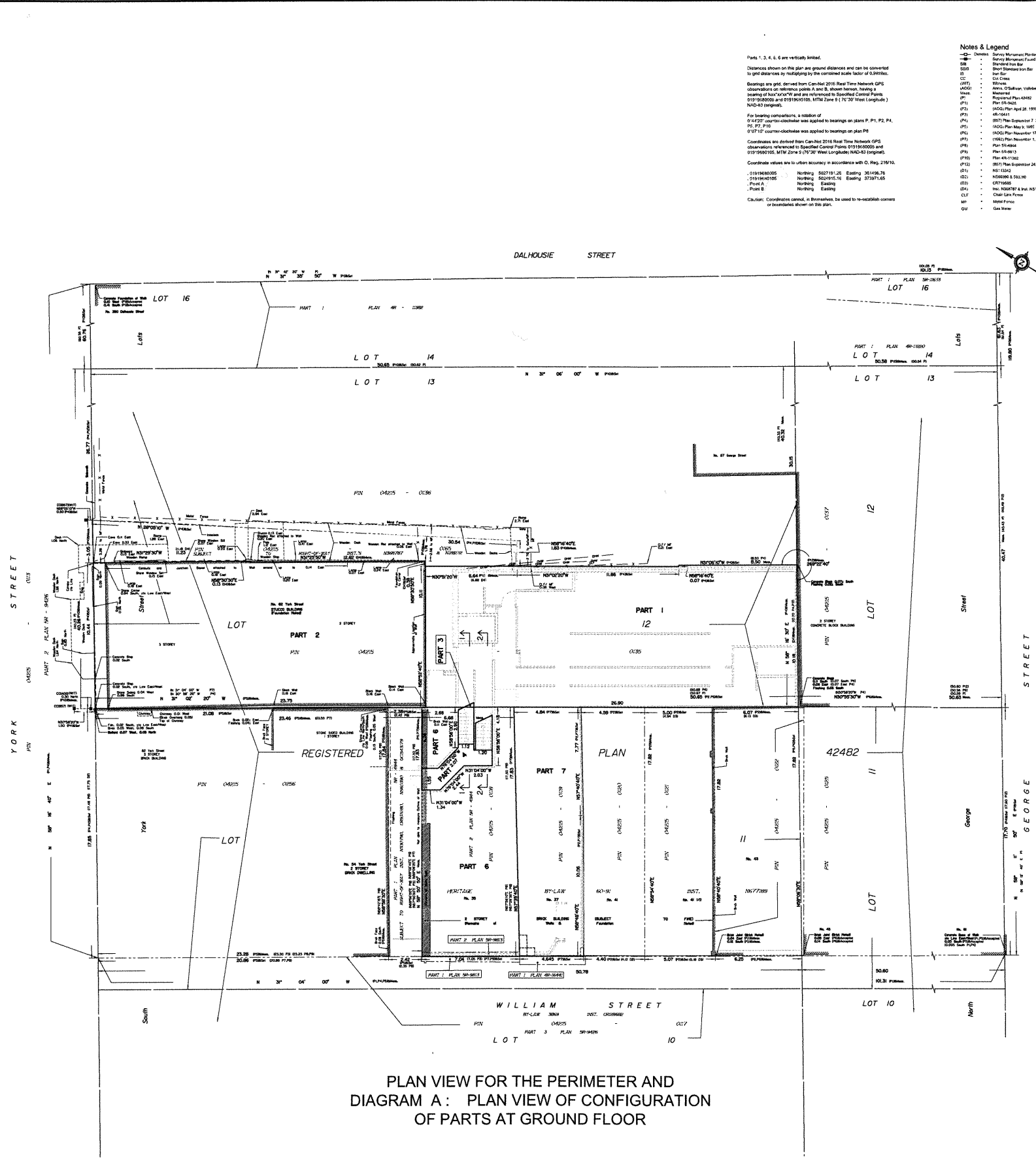
Surveyor's Certificate
 I, E.L. HERVEY, Ontario Land Surveyor, do hereby certify that the survey and plan are correct and in accordance with the Survey Act and the Survey Regulations and the Land Titles Act and the regulations made under them.
 The survey was completed on the _____ day of November, 2019.

Date: _____
 E.L. Hervey
 Ontario Land Surveyor

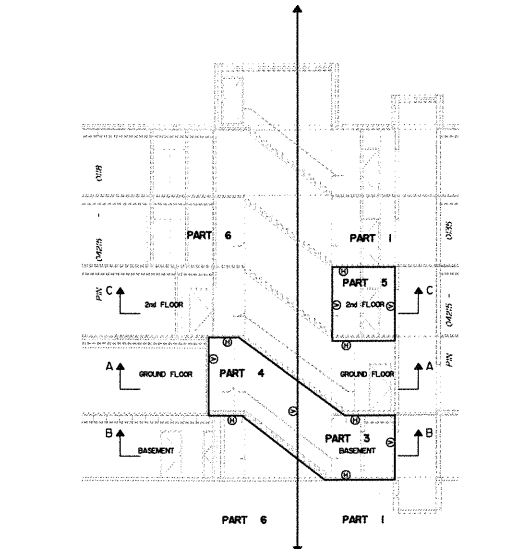
Notes & Legend

Parts 1, 2, 3, 4, 5 & 6 are vertically linked.
 Distances shown on this plan are ground distances and can be converted to true distances by multiplying by the correction factor of 0.9998.
 Bearings are given derived from Can-Hot 2016 Real Time Network GPS observations or multiple points A and B shown herein, having a bearing of N 0° 0' 0" W and are referenced to Geocentric Datum (GDA) 2011.
 For bearing comparisons, a station of 0+4257 control-stake was applied to bearings on plans P, P1, P2, P4, P5, P7, P10.
 0+7107 control-stake was applied to bearings on plan P8.
 Coordinates are derived from Can-Hot 2016 Real Time Network GPS observations referenced to Geocentric Datum (GDA) 2011 and are referenced to Geocentric Datum (GDA) 2011.
 Coordinate values are given in accordance with O. Reg. 219/11.
 -1191488.005 Northing 502719.125 Easting 301396.75
 -1191489.155 Northing 502915.11 Easting 273971.65
 -Point 1: Northing Easting
 -Point 2: Northing Easting
 Caution: Coordinates cannot, in themselves, be used to re-establish corners or boundaries shown on this plan.

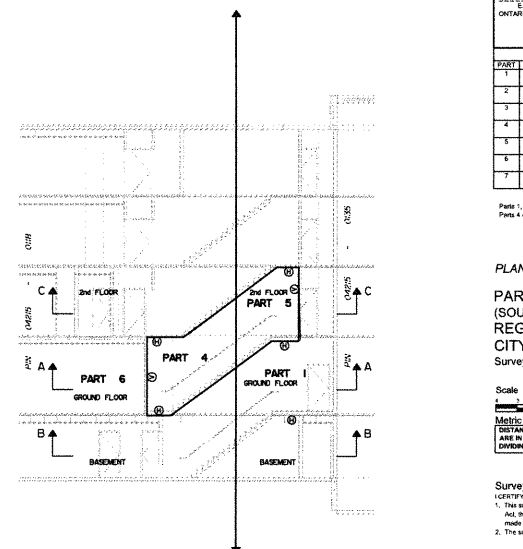
- 1-1 Section 1-1
- 2-2 Section 2-2
- 3-3 Section 3-3
- 4-4 Section 4-4
- 5-5 Section 5-5
- 6-6 Section 6-6
- 7-7 Section 7-7
- 8-8 Section 8-8
- 9-9 Section 9-9
- 10-10 Section 10-10
- 11-11 Section 11-11
- 12-12 Section 12-12
- 13-13 Section 13-13
- 14-14 Section 14-14
- 15-15 Section 15-15
- 16-16 Section 16-16
- 17-17 Section 17-17
- 18-18 Section 18-18
- 19-19 Section 19-19
- 20-20 Section 20-20
- 21-21 Section 21-21
- 22-22 Section 22-22
- 23-23 Section 23-23
- 24-24 Section 24-24
- 25-25 Section 25-25
- 26-26 Section 26-26
- 27-27 Section 27-27
- 28-28 Section 28-28
- 29-29 Section 29-29
- 30-30 Section 30-30
- 31-31 Section 31-31
- 32-32 Section 32-32
- 33-33 Section 33-33
- 34-34 Section 34-34
- 35-35 Section 35-35
- 36-36 Section 36-36
- 37-37 Section 37-37
- 38-38 Section 38-38
- 39-39 Section 39-39
- 40-40 Section 40-40
- 41-41 Section 41-41
- 42-42 Section 42-42
- 43-43 Section 43-43
- 44-44 Section 44-44
- 45-45 Section 45-45
- 46-46 Section 46-46
- 47-47 Section 47-47
- 48-48 Section 48-48
- 49-49 Section 49-49
- 50-50 Section 50-50



PLAN VIEW FOR THE PERIMETER AND
 DIAGRAM A: PLAN VIEW OF CONFIGURATION
 OF PARTS AT GROUND FLOOR



SECTION 1-1



SECTION 2-2

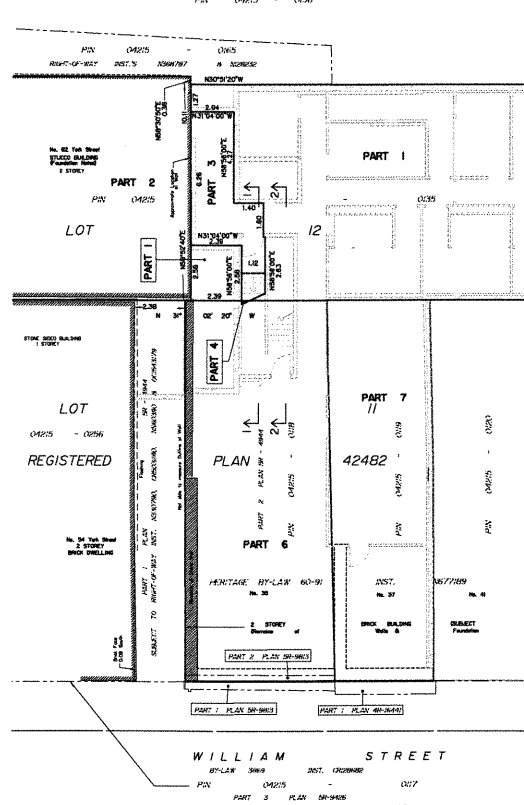


DIAGRAM B:
 PLAN VIEW OF CONFIGURATION OF PARTS AT
 BASEMENT

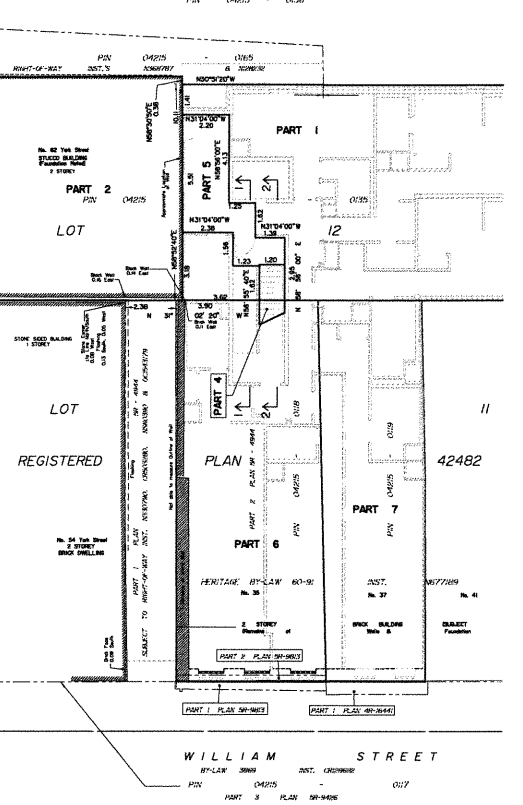


DIAGRAM C:
 PLAN VIEW OF CONFIGURATION OF PARTS AT
 2nd FLOOR

Committee of Adjustment
JAN 13 2020
 City of Ottawa

ELEVATION NOTES
 1. Elevations shown are ground, and are relative to the datum of the vertical control system in use.
 2. Specific datum, derived from vertical control system, with an elevation of 85.83 above sea level.