

Committee of Adjustment
JAN 15 2020
 City of Ottawa

PART 1 COMPLETE

OBSERVED REFERENCE POINTS DERIVED FROM THE CANADIAN NETWORK GPS OBSERVATIONS ON HORIZONTAL CONTROL POINTS 197203 AND 194811, CENTRAL APPROXIMATE POINT WEST LONGITUDE WITH ZONE 9, NAD83 (EPSG:3147), COORDINATE SYSTEM HORIZONTAL PROJECTED UTM ZONE 9.

FORGED	FORGING	EASYS
0		
1		

COORDINATE CANNOT BE USED TO ESTABLISH CORNER OF BOUNDARIES SHOWN ON THE PLAN.

SCHEDULE			
PART	UNIT	PLAN	PIN
1	PART OF 9		ALL OF 03934-0117
2		INDEX D-24	
3	PART OF 11		ALL OF 03940-19

IF YOU ARE THE PLANNED DEVELOPER UNDER THE LAND USE ACT, **PLAN 4R-** RECEIVED AND DEPOSITED

DATE: _____ DATE: _____

BY: _____ OF AND FOR: _____

BY: _____ OF AND FOR: _____

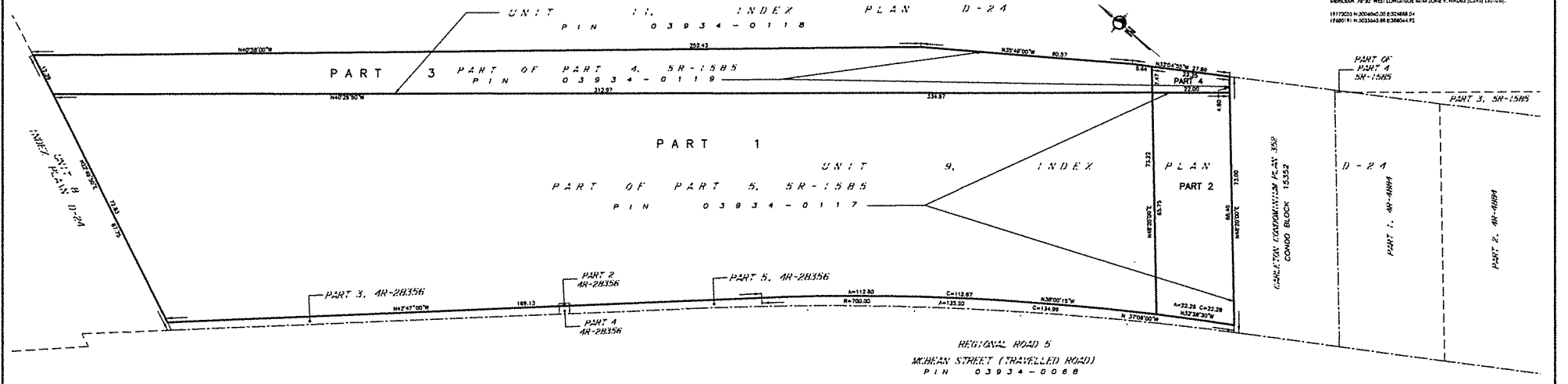
PART OF SURVEY OF
PART OF UNITS 9 AND 11
INDEX PLAN D-24
 CITY OF OTTAWA

Scale 1:500

METRIC CONVERSION
 DISTANCES AND COORDINATES SHOWN ON THE PLAN ARE IN METERS AND CAN BE CONVERTED TO FEET BY DIVIDING BY 0.3048

GRID SCALE CONVERSION
 DISTANCES ARE GROUND AND CAN BE CONVERTED TO GRID BY MULTIPLYING BY THE COMBINED SCALE FACTOR OF 0.99995

HEARING NOTE
 BEARINGS AND DISTANCES DERIVED FROM THE CANADIAN NETWORK OBSERVATIONS ON HORIZONTAL CONTROL POINTS 197203 AND 194811, CENTRAL APPROXIMATE POINT WEST LONGITUDE WITH ZONE 9, NAD83 (EPSG:3147).
 117203 N: 205460.20 E: 525488.54
 194811 N: 203343.88 E: 528804.92



LEGEND

■	DIPOLES	ROUND ALUMINUMS
□	DISKS	SETBACK MARKS
○		IRON BAR
●		ROD BUSH BAR
○		STAINLESS STEEL BAR
○		ROCK GALVANIZED BAR
○		CUT CHISEL
○		CONCRETE PIN
○		WIRE
○		EXPERIMENTAL MARKER
○		MEASUREMENT
○		PROPOSED
○		ORIGINAL POINT
○		IF ANY ORGANIZATION
○		PLAN

DEVELOPER'S CERTIFICATE

I CERTIFY THAT:

- THE SURVEY AND PLAN ARE CORRECT AND IN ACCORDANCE WITH THE SURVEY ACT, THE SURVEYORS ACT AND THE REGULATIONS MADE UNDER THEM.
- THE SURVEY WAS COMPLETED ON THE DAY OF, 2019.

DATE: _____ BY: _____ OF AND FOR: _____

Stantec Geomatics Ltd.

135 OSGE BRIDGE BLVD
 OTTAWA, ONTARIO, K2P 1K7
 TEL: 416-291-1000
 FAX: 416-291-1001
 WWW.STANTEC.COM

DRAFT



PRELIMINARY LAND USE

LAND USE	BLOCKS	AREA (ha)
Residential Area min. 30m Lot Depth	-	36.6
Elementary School	Block A	2.9
Parks	Blocks B-C	3.1
Village Commercial	Block D	2.8
Stormwater Management Facility	Block E	2.3
Richmond By-Pass Drain incl. 30m setback	Block F	4.0
Open Space	Block G	0.16
Roads	-	14.9
APPROXIMATE TOTAL AREA		66.8ha
APPROXIMATE ROAD LENGTH		9,448m
<i>Includes 14.0m Window Streets; 16.5m Local Roads; 20.0m & 24.0m Collector Road</i>		
- - - BICYCLE ROUTE		

Note: Concept plan is preliminary and land use areas are approximately only; Not based on a survey

Not to Scale November 22, 2019 18.549



PRELIMINARY CONCEPT PLAN
Ottawa Street and Eagleson Road
City of Ottawa

Committee of Adjustment
JAN 15 2020
City of Ottawa