

Distances shown on this plan are ground distances and can be converted to grid distances by multiplying by the combined scale factor of 0.999971.

For Bearing Comparisons a rotation of 0°06'30" Counter Clockwise was applied to bearings on Plan (P).

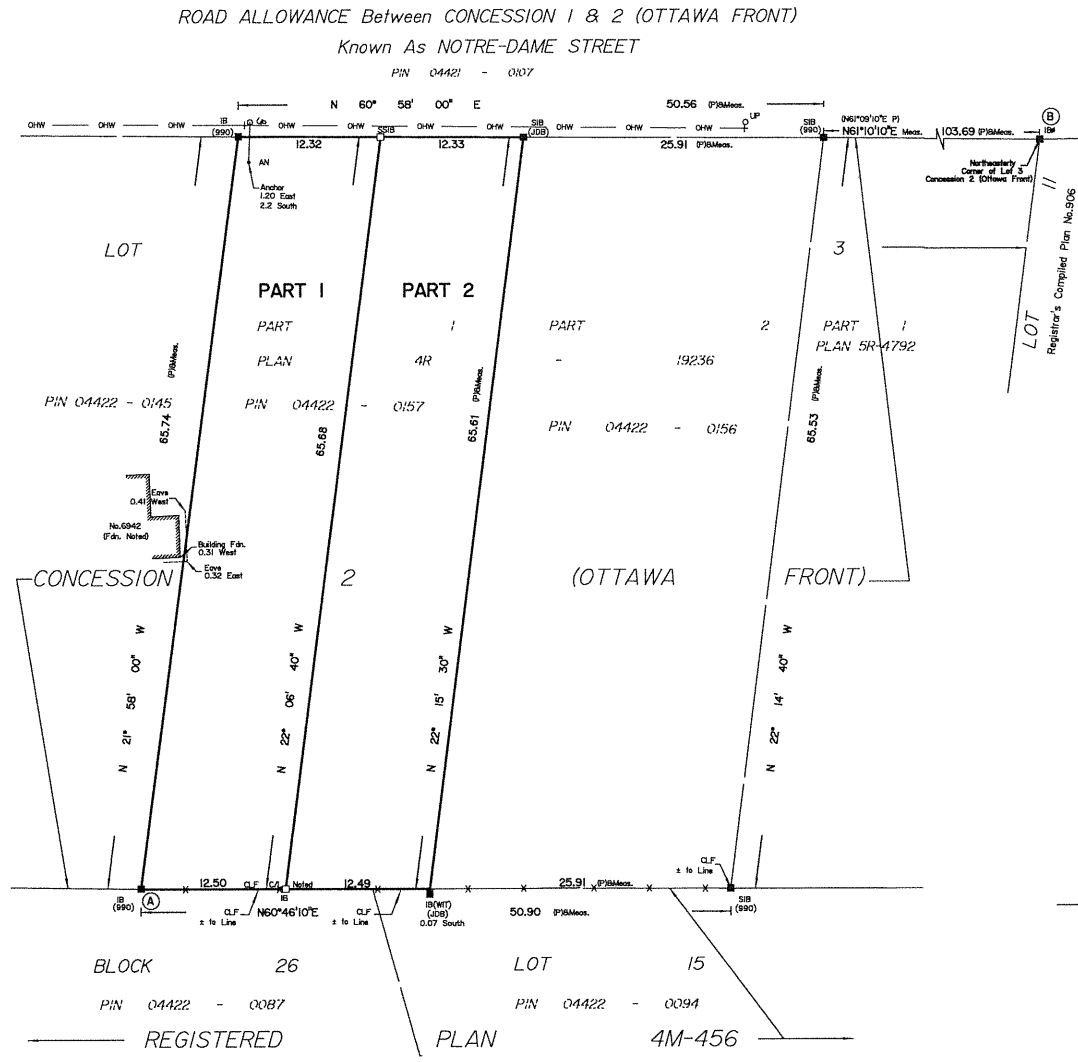
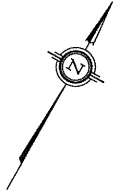
Bearings are grid, derived from Can-Net 2016 Real Time Network GPS observations on reference points A and B, shown hereon, and are referenced to Specified Control Points 01919680184 and 019198434761, MTM Zone 9 (76°30' West Longitude) NAD-83 (original).

Coordinates are derived from Can-Net 2016 Real Time Network GPS observations referenced to Specified Control Points 01919680184 and 019198434761, MTM Zone 9 (76°30' West Longitude) NAD-83 (original).

Coordinate values are to urban accuracy in accordance with O. Reg. 216/10.

. 01919680184 Northing 5040610.16 Easting 384736.56
 . 019198434761 Northing 5036178.12 Easting 372436.11
 . Point A Northing 5036982.28 Easting 381060.13
 . Point B Northing 5037117.80 Easting 381170.59

Caution: Coordinates cannot, in themselves, be used to re-establish corners or boundaries shown on this plan.



I REQUIRE THIS PLAN TO BE DEPOSITED UNDER THE LAND TITLES ACT.
 DATE: _____

PLAN 4R-
 RECEIVED AND DEPOSITED
 DATE: _____

--- RICHARD R. GAUTHIER ---
 ONTARIO LAND SURVEYOR

REPRESENTATIVE FOR
 LAND REGISTRAR FOR THE
 LAND TITLES DIVISION OF
 OTTAWA-CARLETON NO. 4.

| SCHEDULE | | | |
|----------|------|-----------|------------------|
| SQ. M. | PART | LOT | CONCESSION |
| 809.5 | 1 | PART OF 3 | 2 (OTTAWA FRONT) |
| 808.1 | 2 | | |

PLAN OF SURVEY OF
PART OF LOT 3
Concession 2 (OTTAWA Front)
Geographic Township Of Gloucester
 Surveyed by Annis, O'Sullivan, Vollebek Ltd.



Metric
 DISTANCES AND COORDINATES SHOWN ON THIS PLAN
 ARE IN METRES AND CAN BE CONVERTED TO FEET BY
 DIVIDING BY 0.3048.

Surveyor's Certificate
 I CERTIFY THAT:
 1. This survey and plan are correct and in accordance with the Surveys Act, the Surveyors Act and the Land Titles Act and the regulations made under them.
 2. The survey was completed on the 19th day of December, 2019.

Date _____ Richard R. Gauthier
 Ontario Land Surveyor

- Notes & Legend**
- Denotes Survey Monument Planted
 - Denotes Survey Monument Found
 - SIB - Standard Iron Bar
 - IBP - Round Iron Bar
 - IB - Iron Bar
 - (WT) - Witness
 - (ACG) - Annis, O'Sullivan, Vollebek Ltd.
 - Meas. - Measured
 - Fdn. - Foundation
 - CLF - Chain Link Fence
 - (PI) - Plan 45-15226
 - OHW - Overhead Wires
 - UP - Utility Pole
 - AN - Anchor

ANNIS, O'SULLIVAN, VOLLEBEK LTD.
 14 Concourse Gate, Suite 500
 Nepean, Ont. K2E 7S6
 Phone: (613) 727-0850 / Fax: (613) 727-1079
 Email: info@anniso.com
 Ontario Land Surveyors (Lic. No. 20358-19 P1 L13 Con. R. Di)

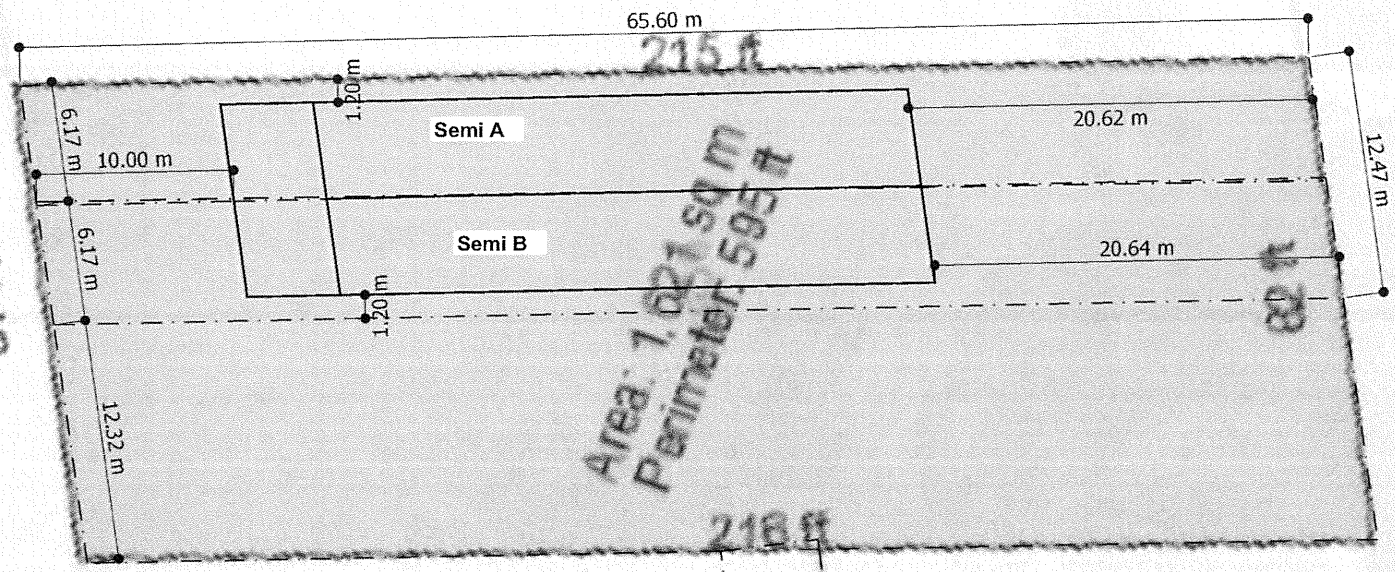


PROGRESS DRAWING
 This drawing is not intended to be used for contract pricing or fabrication purposes.
 All content is subject to change

COORDINATION

| | |
|-------------------------------------|-----------------------------------|
| <input type="checkbox"/> Structural | <input type="checkbox"/> Plumbing |
| <input type="checkbox"/> Mechanical | <input type="checkbox"/> Data |
| <input type="checkbox"/> Electrical | <input type="checkbox"/> Other |

Notre Dame Road
81 ft



Area: 1,621.59 m²
 Perimeter: 595 ft

THIS DOCUMENT CONTAINS
 CONFIDENTIAL AND
 PROPRIETARY INFORMATION
 THAT CANNOT
 BE REPRODUCED OR
 DIVULGED, IN WHOLE OR IN
 PART, WITHOUT WRITTEN
 AUTHORIZATION FROM Planning
 By People, City Villages

DRAFT
 Review
 Scale: 1 : 250
 Draft Review

6950 Notre Dame
 City of Ottawa

by Chris Jalkotzy
 Planning By People
 City Villages

January 17, 2020
 Semi Layout
 Page 1