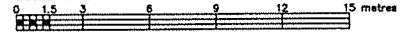


LOT 298
REGISTERED PLAN M-29
CITY OF OTTAWA

FARLEY, SMITH & DENIS SURVEYING LTD. 2019

Scale 1: 150



Metric Note

Distances and coordinates on this plan are in metres and can be converted to feet by dividing by 0.3048.

Distance Note

Distances shown on this plan are ground distances and can be converted to grid distances by multiplying by the combined scale factor of 0.99994.

Bearing Note

Bearings hereon are grid bearings derived from the CAN-Net Real Time Network and are referred to the Central Meridian of MTM Zone 9 (76°30' West Longitude) Nad-83 (Original).

For bearing comparisons, a rotation of 0°25'45" counter-clockwise was applied to bearings on P2.
For bearing comparisons, a rotation of 0°24'50" counter-clockwise was applied to bearings on P3.

Elevation Notes

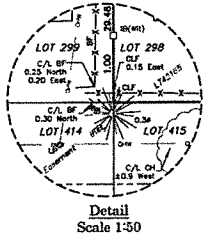
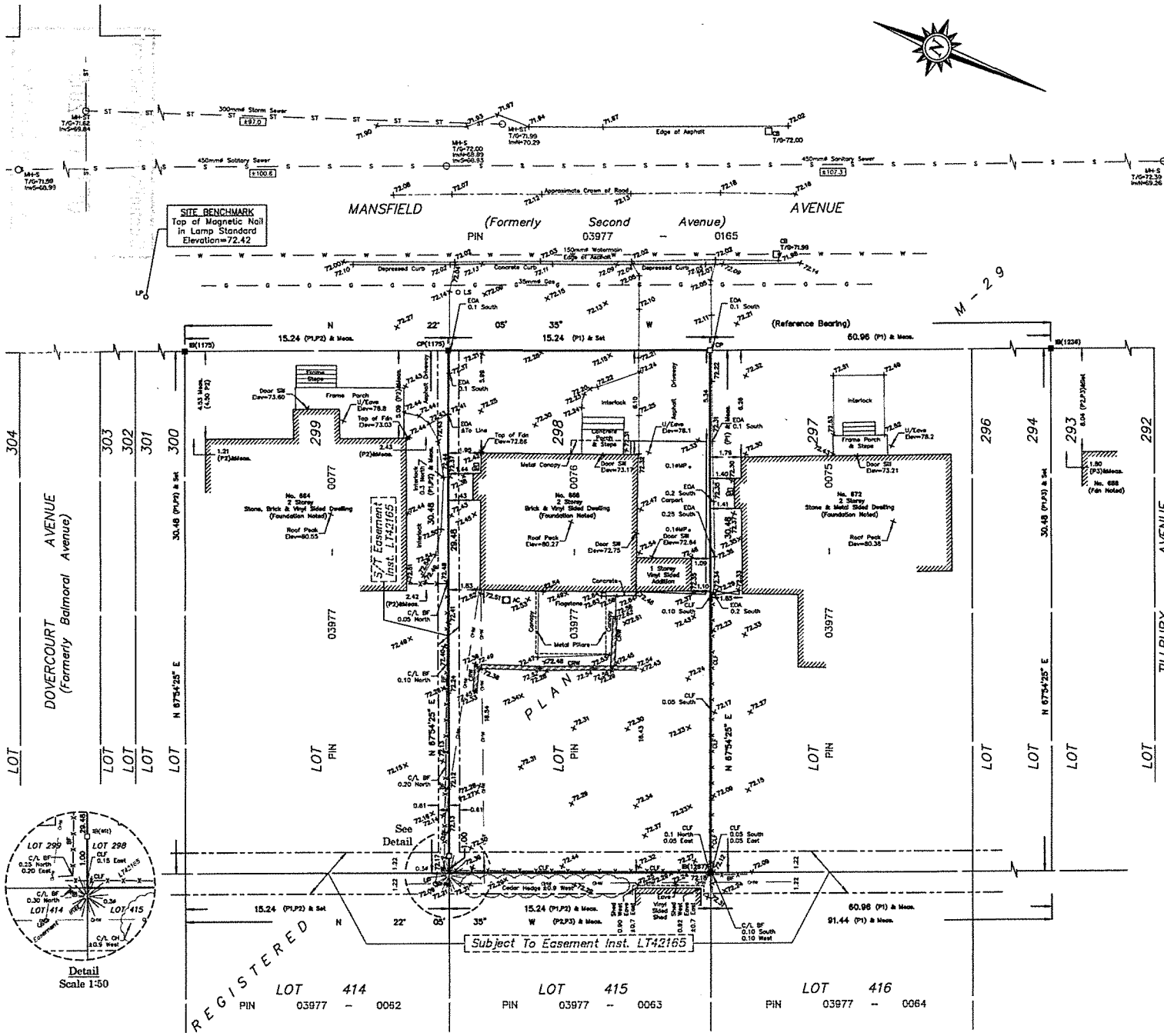
- Elevations shown are geodetic and are referred to Geodetic Datum CGVD-1928 :1978. (Plan by (857) Ref. No. 268-M-29)
- It is the responsibility of the user of this information to verify that the job benchmark has not been altered or disturbed and that its relative elevation and description agrees with the information shown on this drawing.

Utility Notes

- This drawing cannot be accepted as acknowledging all of the utilities and it will be the responsibility of the user to contact the respective utility authorities for confirmation.
- Only visible surface utilities were located.
- Underground utility data derived from City of Ottawa utility sheet reference: F-03-10, F-03-11 and drawings Nos. 294 & 5951.
- Sanitary and storm sewer grades and inverts were derived field measurement.
- A field location of underground plant by the pertinent utility authority is mandatory before any work involving breaking ground, probing, excavating etc.

Notes & Legend

- Denotes**
- Survey Monument Planted
 - Survey Monument Found
 - Iron Bar
 - CP Concrete Pin
 - (Wit) Witness
 - Meas Measured
 - (PI) Registered Plan M-29
 - (P2) Plan by (1637) dated Oct. 16, 2012 (File No. 12-10258)
 - (P3) Plan by (1236) dated Sept. 12, 2008 (Ref. No. 08-1017)
 - OH+ST Maintenance Hole (Storm)
 - OH+SS Maintenance Hole (Sanitary)
 - Wood Gate
 - Overhead Wires
 - Underground Storm Sewer
 - Underground Sanitary Sewer
 - Underground Gas
 - Air Conditioner
 - Gas Meter
 - Lamp Post
 - Chain Link Fence
 - Board Fence
 - Cedar Hedge
 - Concrete Retaining Wall
 - Metal Post
 - EOA Edge of Asphalt
 - CA Centreline
 - Inv. Invert
 - T/G Top of Grate
 - Fdn Foundation
 - U/Eave Underside of Eave
 - +65.00 Location of Elevations
 - +63.00 Top of Concrete Curb Elevation
 - Property Line
 - Deciduous Tree



REGISTERED

LOT 414
PIN 03977 - 0062

LOT 415
PIN 03977 - 0063

LOT 416
PIN 03977 - 0064

WARNING NO PERSON MAY COPY, REPRODUCE, DISTRIBUTE OR ALTER THIS PLAN IN WHOLE OR IN PART WITHOUT THE WRITTEN PERMISSION OF FARLEY, SMITH & DENIS SURVEYING LTD.
© FARLEY, SMITH & DENIS SURVEYING LTD., 2019.

Surveyor's Certificate

I certify that:

- This survey and plan are correct and in accordance with the Surveyors Act, and the Surveyors Act and the Regulations made under them.
- The survey was completed on the 24th day of September, 2019.

Sept 27/19 Date *Jamie Leslie*
Ontario Land Surveyor

FARLEY, SMITH & DENIS SURVEYING LTD.

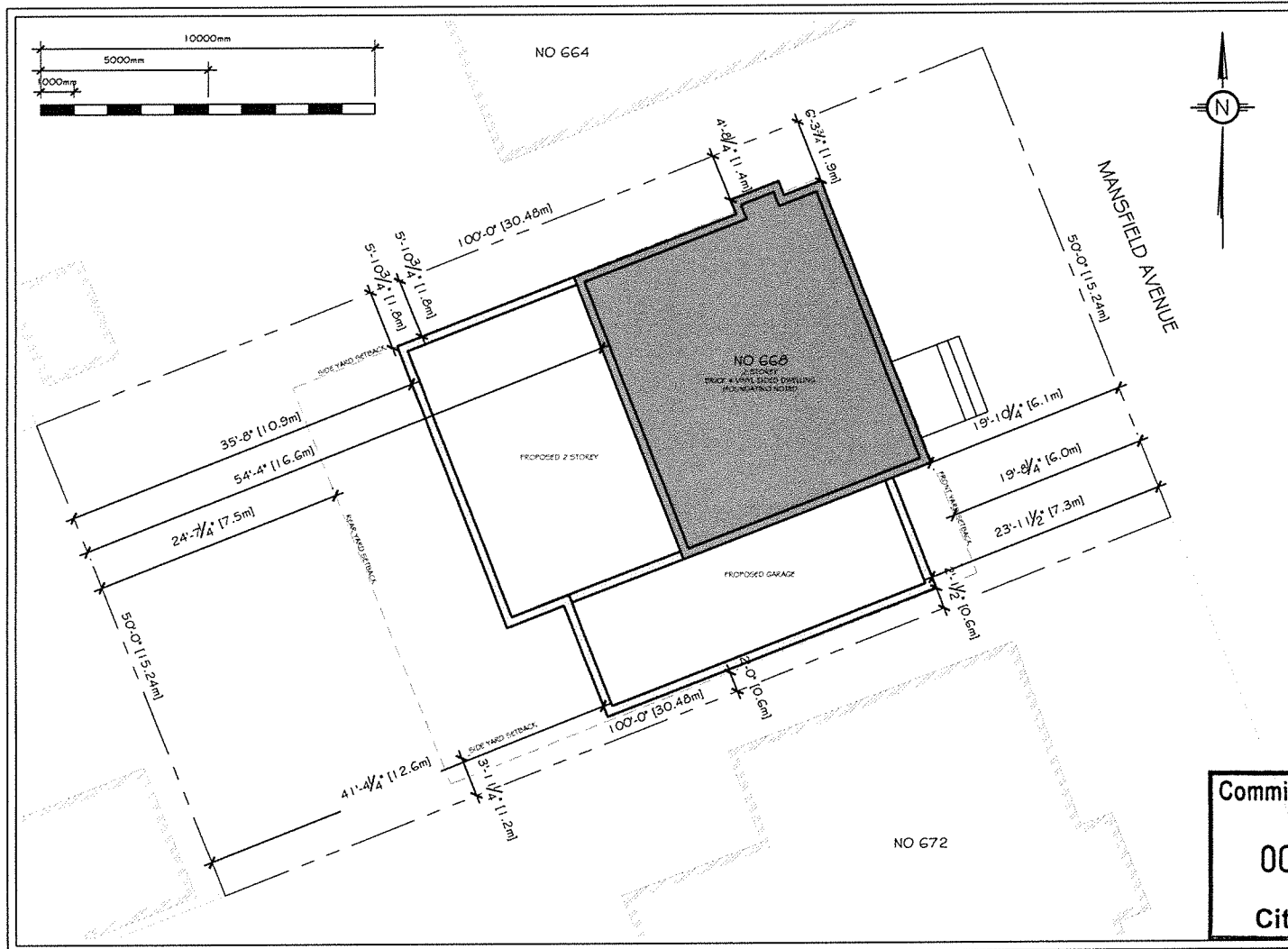
ONTARIO LAND SURVEYORS
CANADA LAND SURVEYORS

190 COLONNADE ROAD, OTTAWA, ONTARIO K2E 7J5
TEL. (613) 727-8226 FAX. (613) 727-1826

ASSOCIATION OF ONTARIO LAND SURVEYORS
PLAN SUBMISSION FORM
2104247

THIS PLAN IS NOT VALID UNLESS IT IS AN EMBOSSED ORIGINAL COPY ISSUED BY THE SURVEYOR
In accordance with Regulation 1026, Section 29 (1)

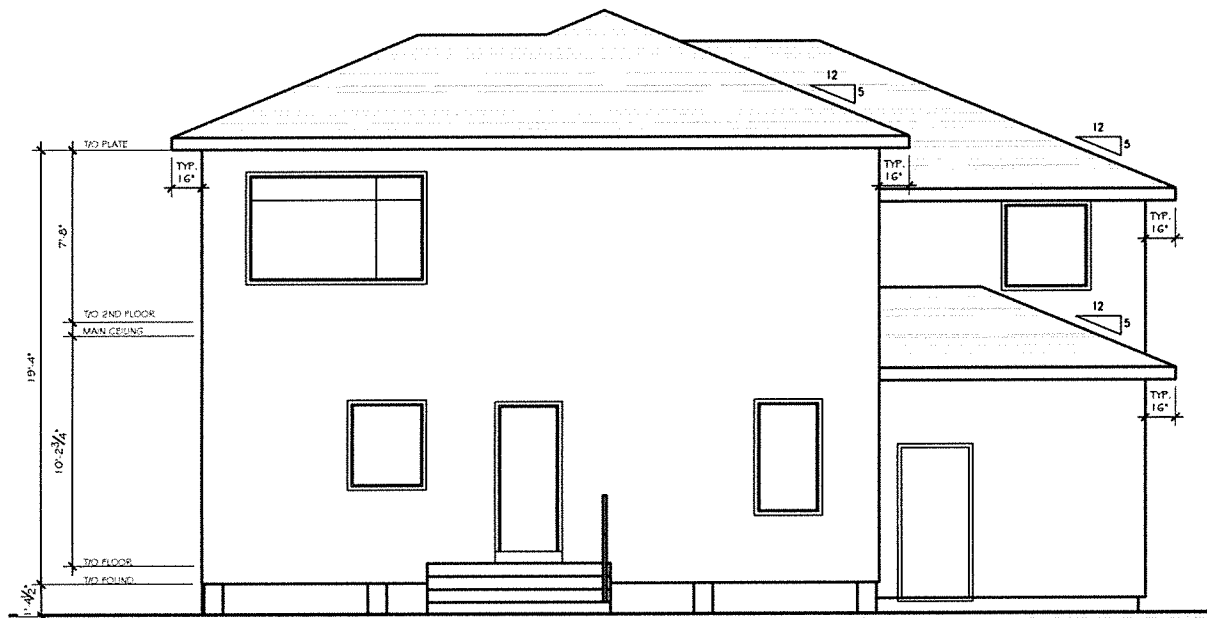
FILE No.: 459-19



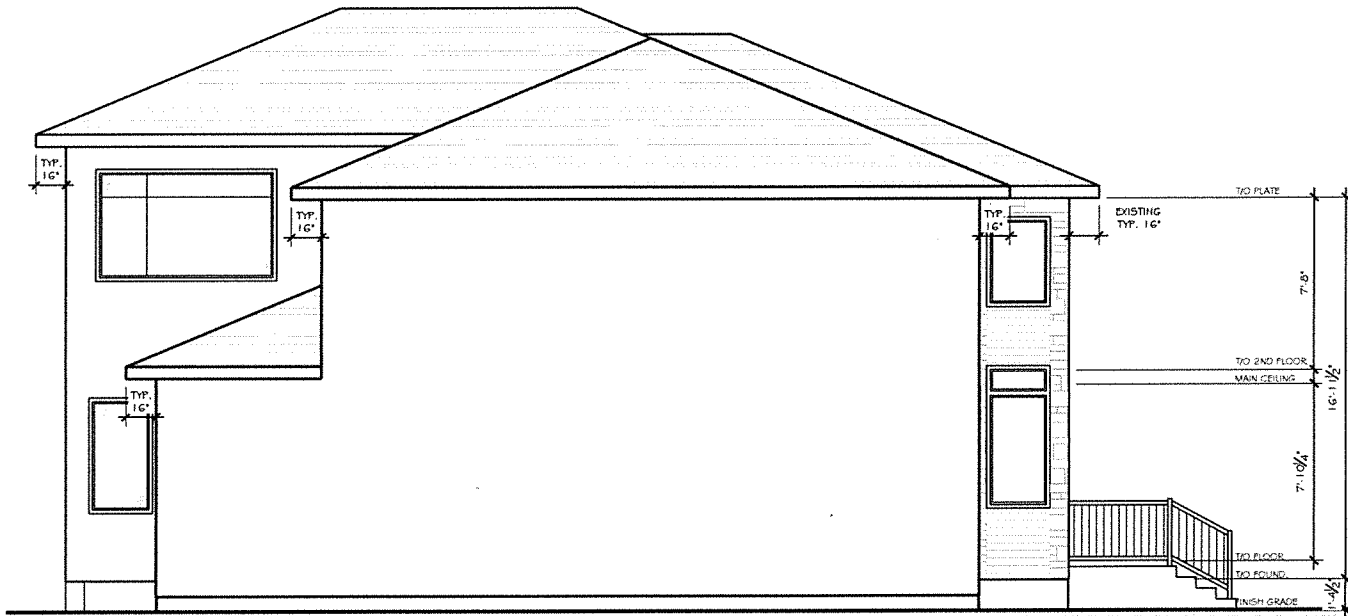
Committee of Adjustment
 OCT 10 2019
 City of Ottawa



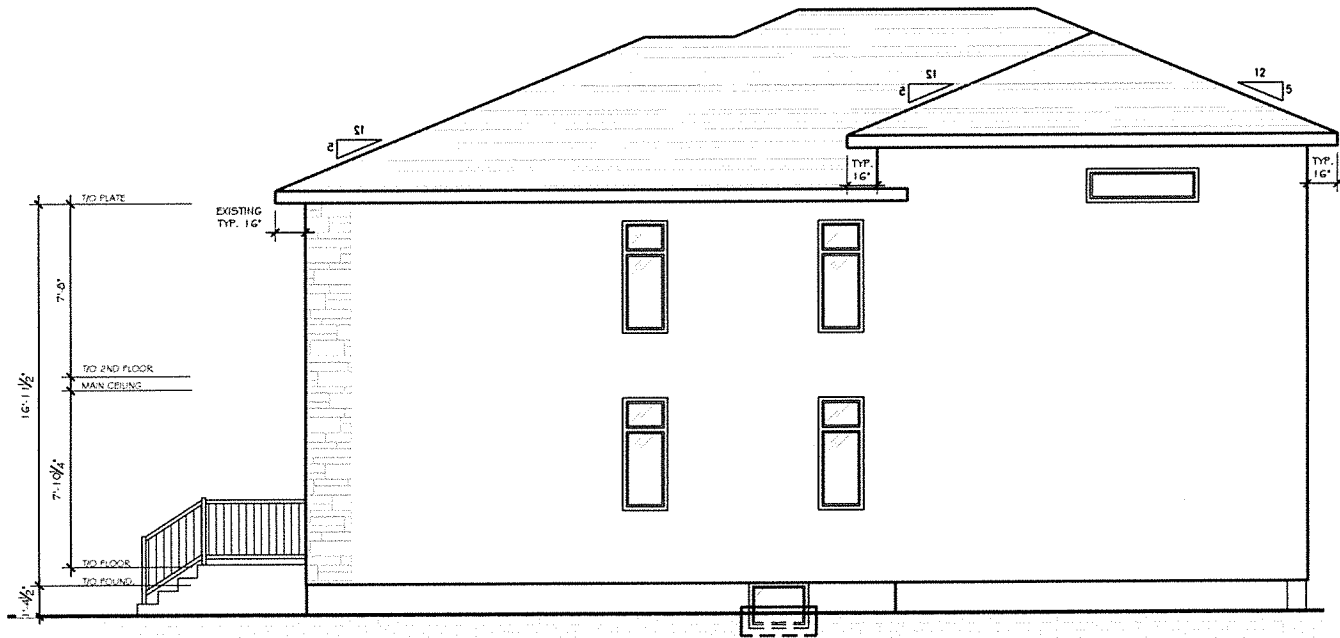
Committee of Adjustment
 OCT 10 2019
 City of Ottawa



Committee of Adjustment
 OCT 10 2019
 City of Ottawa



Committee of Adjustment
 OCT 10 2019
 City of Ottawa



Committee of Adjustment
 OCT 10 2019
 City of Ottawa