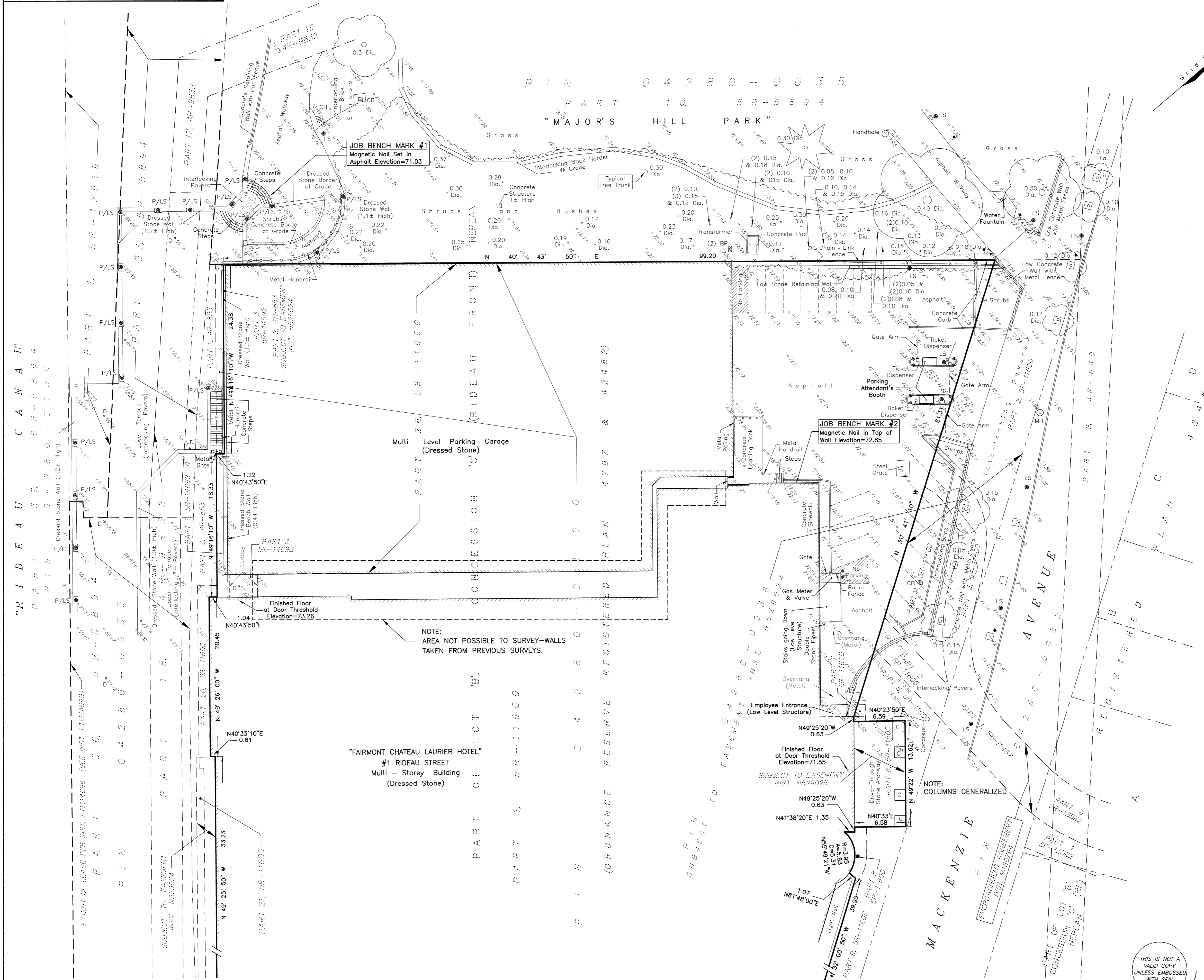


METRIC
DISTANCES AND ELEVATIONS SHOWN ON THIS PLAN ARE IN METRES
AND CAN BE CONVERTED TO FEET BY DIVIDING BY 0.3048



TOPOGRAPHIC PLAN OF
PART OF LOT 'B'
CONCESSION 'C' (RIDEAU FRONT)
SHOWN AS ORDNANCE RESERVE ON
REGISTERED PLAN 4797 & 42482
GEOGRAPHIC TOWNSHIP OF NEPEAN
Now CITY OF OTTAWA



FAIRHALL, MOFFATT & WOODLAND LIMITED
ONTARIO LAND SURVEYORS

ELEVATION NOTES

- ELEVATIONS SHOWN HEREON ARE REFERRED TO GEODETIC DATUM (CGVD28).
- ELEVATIONS FOR MANHOLE COVERS AND CATCH BASINS HAVE TO BE INDEPENDENTLY CONFIRMED BEFORE THEY CAN BE ACCEPTED FOR FINAL DESIGN OR CONSTRUCTION PURPOSES.
- IT IS THE RESPONSIBILITY OF THE USER OF THIS INFORMATION TO VERIFY THAT THE JOB BENCH MARKS HAVE NOT BEEN ALTERED OR DISTURBED AND THAT THEIR RELATIVE ELEVATIONS AND DESCRIPTIONS AGREE WITH THE INFORMATION SHOWN ON THIS DRAWING.

UTILITY NOTES

- THIS DRAWING CANNOT BE ACCEPTED AS ACKNOWLEDGING ANY UNDERGROUND UTILITIES AND IT WILL BE THE RESPONSIBILITY OF THE USER TO CONTACT THE RESPECTIVE UTILITY AUTHORITIES FOR CONFIRMATION OR LOCATION.
- BEFORE ANY WORK INVOLVING PROBING, EXCAVATING, ETC., A FIELD LOCATION OF UNDERGROUND PLANT BY THE PERTINENT UTILITY AUTHORITY IS MANDATORY.

NOTES

- THE CAD DRAWING IS REFERENCED TO THE MTM GRID SYSTEM, ZONE 9 NAD83 (ORIGINAL).
- THE COMBINED SCALE FACTOR IS 0.999942.
- BOUNDARY AND DIMENSIONS SHOWN ARE PER PLAN BY FAIRHALL, MOFFATT & WOODLAND LIMITED, O.L.S. JOB. N° S42900, REF. 54 (g)-c (RF) NP DATED OCT. 30, 2013.
- THIS PLAN IS A SURVEY OF THE NORTHERLY PORTION OF THE SUBJECT PROPERTY ONLY AND IS NOT INTENDED TO REPRESENT A SURVEY OF THE ENTIRE CHATEAU LAURIER PROPERTY.
- THE SURVEY REPRESENTED BY THIS PLAN WAS COMPLETED ON SEPTEMBER 30, 2015.

LEGEND

DIA. — DIAMETER (TREE TRUNK)	□ C — COLUMN
PIN — PROPERTY IDENTIFIER NUMBER	□ P/LS — PILLAR WITH LAMP
□ CB — CATCH BASIN	□ D — DRAIN
○ MH — MANHOLE	● — BOLLARD
● LS — LAMP STANDARD	● — SIGN
● UP — UTILITY POLE	● — CONIFEROUS TREE
● BP — BELL PEDESTAL	● — DECIDUOUS TREE
□ P — PILLAR	— — CURB

© COPYRIGHT 2015. REPRODUCTION, ALTERATION OR DISTRIBUTION OF THIS PLAN WITHOUT THE WRITTEN CONSENT OF FAIRHALL, MOFFATT & WOODLAND LIMITED IS PROHIBITED.

**Fairhall
Moffatt
&
Woodland**
LIMITED
OTTAWA
Surveying and Land Information Services
100-600 TERRY FOX DRIVE, KANATA, ONTARIO K2L 4B6
TEL: (613) 591-2580 FAX: (613) 591-1495
www.fmw.on.ca

JOB No.
V 3 7 7 0 0

E 367757, N5032088

REFERENCE No.
54 (n) - C (RF) NP

S:\JOBS\1577700\DWG 2015-09-30
TP377V_MTM.DWG (rj)

THIS IS NOT A
VALID COPY
UNLESS EMBOSSED
WITH SEAL