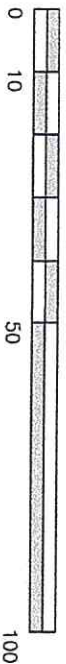


MINOR VARIANCE APPLICATION - SITE PLAN



155 COLONNADE SUITE 20 - LIFTZONE
 AUGUST 7, 2019

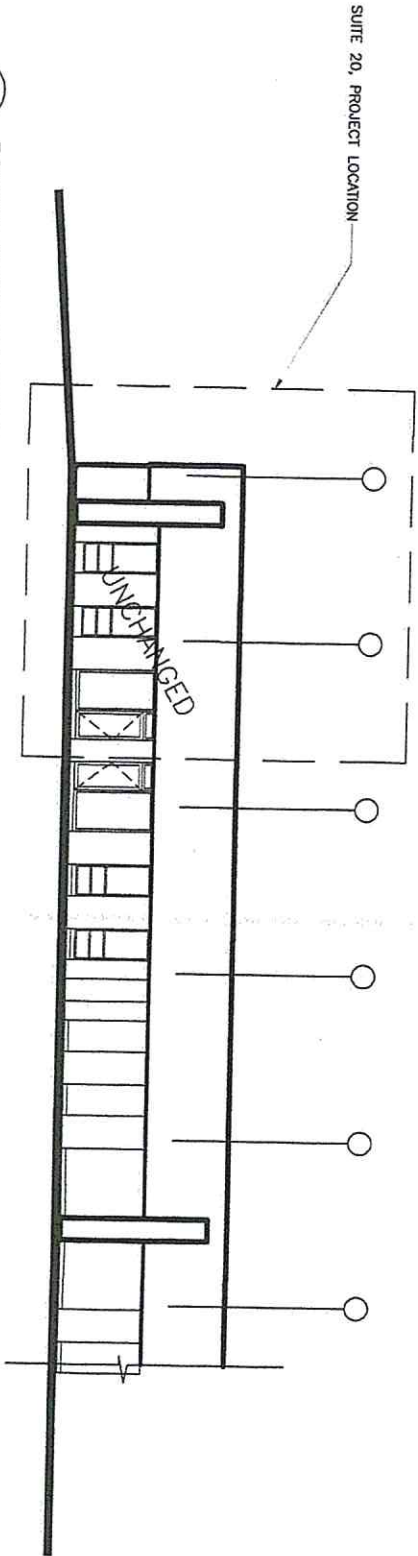
VASK-01



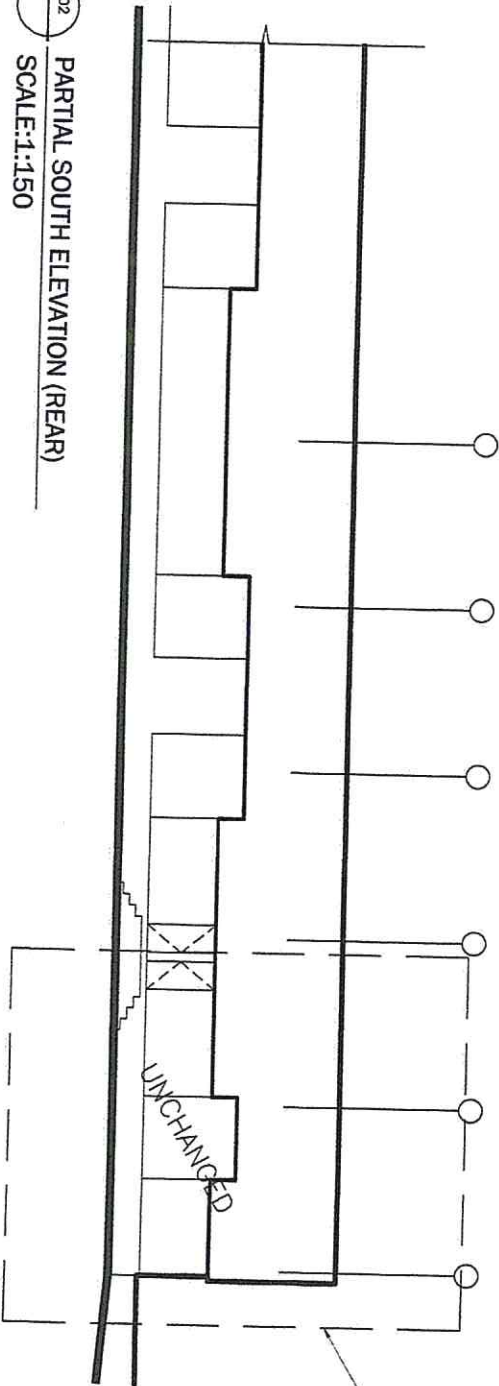
ARCA-VERDE ARCHITECTURE INC.
 2431 Koyonoth Avenue, Ottawa, Ontario, K1V 0G2
 P: 613-702-5833
 www.arca-verde.ca

Committee of Adjustment
 AUG 12 2019
 City of Ottawa

01 PARTIAL NORTH ELEVATION (FRONT)
SCALE:1:150



02 PARTIAL SOUTH ELEVATION (REAR)
SCALE:1:150



MINOR VARIANCE APPLICATION - ELEVATIONS
155 COLONNADE SUITE 20 - LIFTZONE
AUGUST 7, 2019

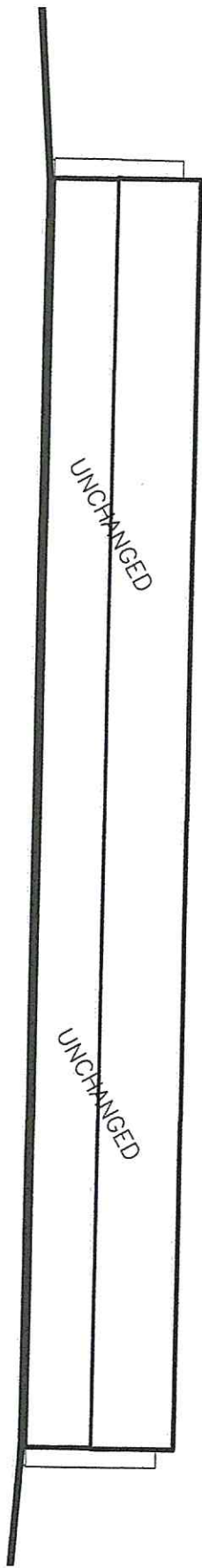
VASK-02



ARCA-VERDE Architecture
ARCHITECTURE Inc. Adjustment
243 Keyworth Avenue
Ottawa, Ontario, K1V 0G2
P:613-702-5033
www.Arca-Verde.ca

AUG 12 2019
City of Ottawa

SUITE 20, PROJECT LOCATION



01 EAST AND WEST ELEVATION (SIDE)
SCALE:1:150

MINOR VARIANCE APPLICATION - EAST & WEST ELEVATIONS
155 COLONNADE SUITE 20 - LIFTZONE
AUGUST 7, 2019

VASK-03

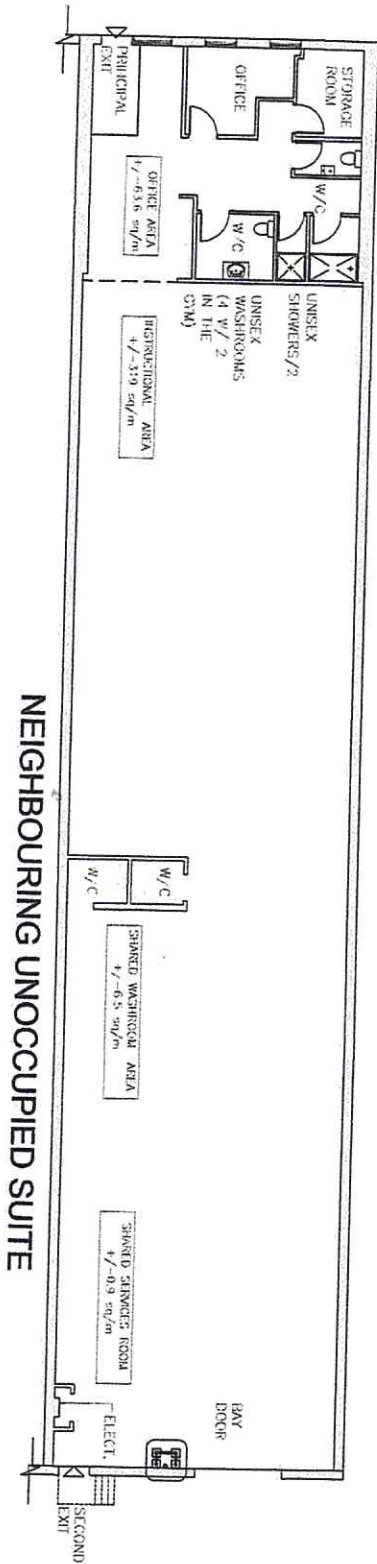


ARCAVERDE
ARCHITECTURE
243 Kingworth Avenue,
Ottawa, Ontario, K1Y 0G2
P:813-702-5033
www.Arca-Verde.ca



COLONNADE

SIDE LANE



SUITE AREA = 390 SQ.M

FRONT OFFICE FUNCTION = 63.6 SQ.M
INSTRUCTIONAL AREA = 319 SQ.M
WASHROOMS = 6.5 SQ.M



MINOR VARIANCE APPLICATION - FLOOR PLAN
155 COLONNADE SUITE 20 - LIFTZONE
AUGUST 7, 2019

VASK-04



Committee
ARCA-VERDE adjustment
ARCHITECTURE Inc.
243 Koyworth Avenue
Ottawa, Ontario, K1V 0G5
P:613-702-5033
www.Arca-Verde.ca

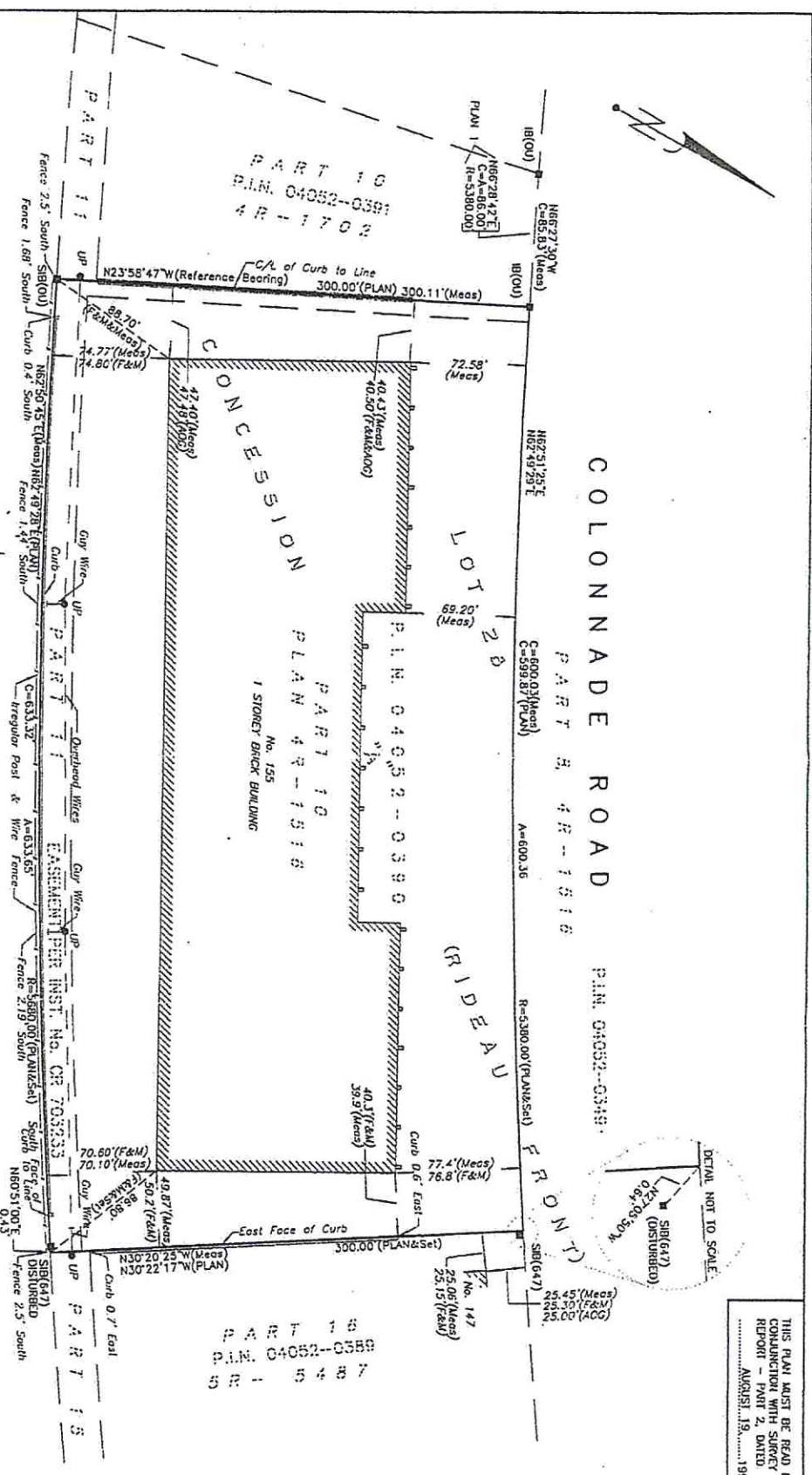
City of Ottawa



CANADIAN NATIONAL RAILWAY

PLAN. 04052-0301

PART 24 4R-1570



PART 10
P.L.N. 04052-0301
4R-1702

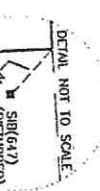
PART 10
P.L.N. 04052-0300
GR-15487

COLONNADE ROAD

PART 3 4R-1516

FRONT

PLAN. 04052-0301



DETAILED NOT TO SCALE

THIS PLAN MUST BE READ IN
CONJUNCTION WITH SURVEY
REPORT - PART 2, DATED
AUGUST 19, 1999