

I REQUIRE THIS PLAN TO BE DEPOSITED UNDER THE LAND TITLES ACT.  
DATE: \_\_\_\_\_

PLAN 4R-  
RECEIVED AND DEPOSITED  
DATE: \_\_\_\_\_

V. ANDREW SHIELD  
REGISTERED LAND SURVEYOR  
OTTAWA LAND SURVEYOR

REPRESENTATIVE FOR THE  
LAND TITLES DIVISION OF  
OTTAWA-CARLETON NO. 4.

SCHEDULE			
AREA (EAS.)	PART	BLOCK	PLAN
1	1		4M-1354
2	2	PART OF 2	PART OF 4M-1354
3	3		PART OF 4M-1354

Plan 2: Subject to assessment, incl. OG100047.  
Parts 1, 2 and 3 together constitute all of PIN 04733-0646.

DRAFT PLAN OF SURVEY OF

BLOCK 2  
REGISTERED PLAN 4M-1354

Geographic Township of Nepean  
CITY OF OTTAWA

Surveyed by Annis, O'Sullivan, Vollebek Ltd.  
Scale 1:1000



Metric  
DISTANCES AND COORDINATES SHOWN ON THIS PLAN  
ARE IN METRES AND CAN BE CONVERTED TO FEET BY  
DIVIDING BY 0.3048.

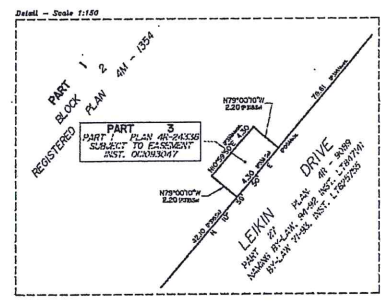
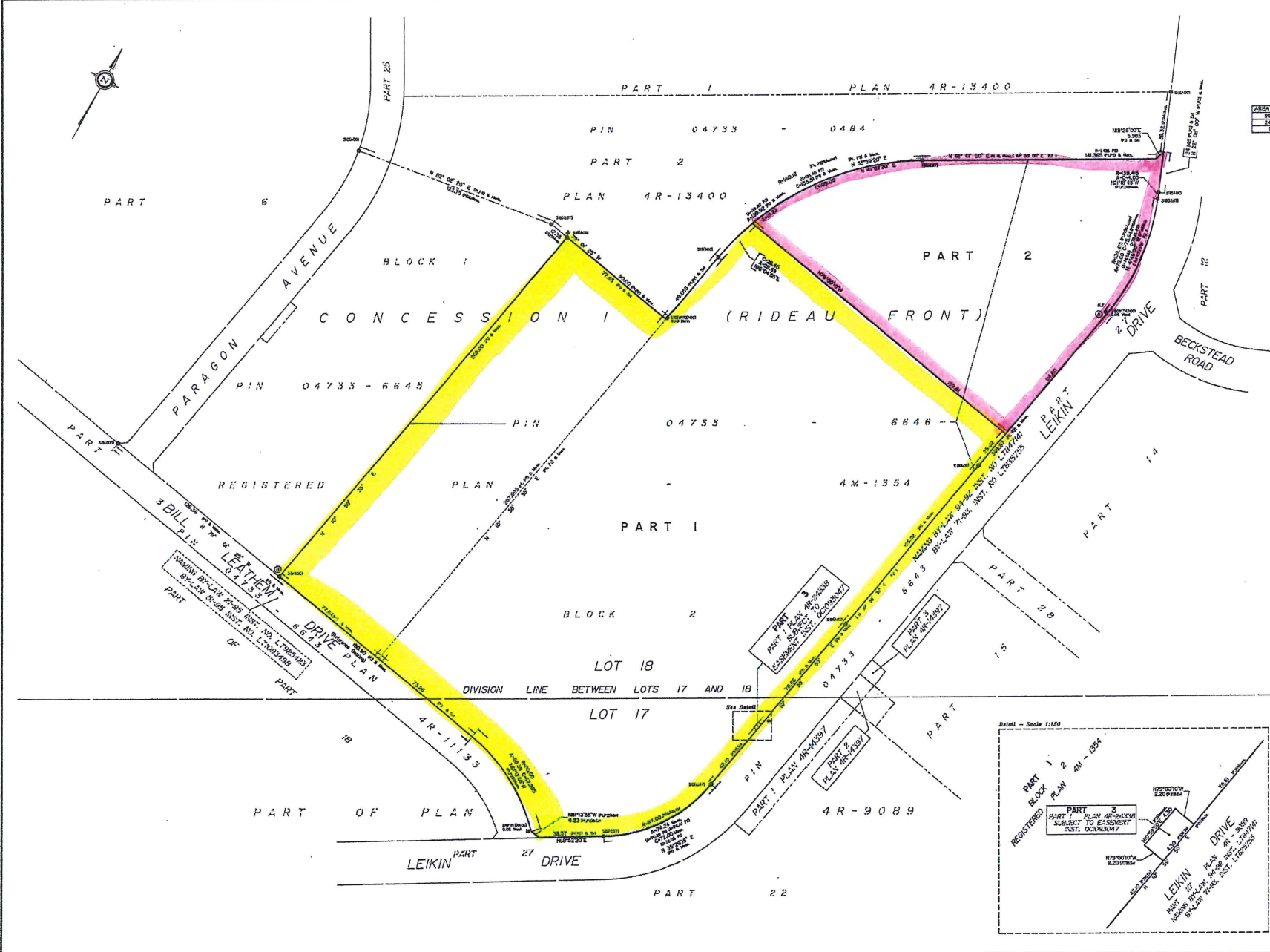
Surveyor's Certificate

1. I certify that:  
1. The survey and plan are correct and in accordance with the Survey Act, the Surveyors Act and the Land Titles Act and the regulations made under each.  
2. The survey was completed on the \_\_\_\_ day of \_\_\_\_\_, 2018.

Date: \_\_\_\_\_  
V. Andrew Shield  
Ontario Land Surveyor

Notes & Legend

- Dashed Survey Monument Plotted
- Survey Monument Found
- S— Standard Iron Bar
- S518— Short Standard Iron Bar
- I— Iron Bar
- (M7)— Witness
- (M20)— Area: O'Sullivan, Vollebek Ltd.
- M441— Measured
- N— Not Referenced
- (P)— Plan 4M-1354
- (P1)— Plan 4R-9089
- (P2)— Plan 4R-1354
- (P3)— Plan 4R-2435



Distances shown on this plan are ground distances and can be converted to grid distances by multiplying by the combined scale factor of 0.999933.  
Bearings are grid, deduced from the westerly limit of Leikin Drive, shown to be N 172°50' E on Registered Plan 4M-1354 and are referred to the Central Meridian of MTH Zone 8 (78°30' West Longitude) NAD-83 (original).  
Coordinates are derived from Can-Met 2018 Real Time Network GPS observations referenced to Standard Control Points 031271235 and 01819871648, MTH Zone 8 (78°30' West Longitude) NAD-83 (original).  
Coordinate values are to urban accuracy in accordance with C. Reg. 216/10.  
• 01918781338 Northing 500025.90 Easting 348142.91  
• 01918781648 Northing 500718.89 Easting 373248.06  
• Point A Northing 501788.38 Easting 387078.65  
• Point B Northing 501782.64 Easting 380718.97

Color: Coordinates shown, in parentheses, be used to re-establish corners or boundaries shown on this plan.  
ANNIS, O'SULLIVAN, VOLLEBEK LTD.  
14 Cochrane Drive, Suite 200  
Nepean, Ont. K2J 7S1  
Phone: (613) 727-0207 Fax: (613) 727-1075  
www.aosvl.com

Sepean Pt 2