

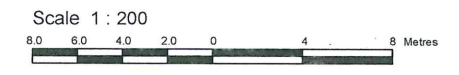


I REQUIRE THIS PLAN TO BE DEPOSITED UNDER THE LAND TITLES ACT.
 DATE: _____
 V. ANDREW SHELPH
 ONTARIO LAND SURVEYOR

PLAN 4R-
 RECEIVED AND DEPOSITED
 DATE: _____
 REPRESENTATIVE FOR
 LAND REGISTRAR FOR THE
 LAND TITLES DIVISION OF
 OTTAWA-CARLETON NO. 4.

SCHEDULE				
AREA (Sq.m.)	PART	LOT	CONCESSION	PIN
446.3	1	PART OF 33	12 (GOULBOURN)	ALL OF 04493-0036
447.4	2			

DRAFT PLAN OF SURVEY OF
PART OF LOT 33
CONCESSION 12
Geographic Township of Goulbourn
CITY OF OTTAWA
 Surveyed by Annis, O'Sullivan, Vollebakk Ltd.



Metric
 DISTANCES AND COORDINATES SHOWN ON THIS PLAN ARE IN METRES AND CAN BE CONVERTED TO FEET BY DIVIDING BY 0.3048.

Surveyor's Certificate

- I CERTIFY THAT:
- This survey and plan are correct and in accordance with the Surveys Act, the Surveyors Act and the Land Titles Act and the regulations made under them.
 - The survey was completed on the ___ day of _____, 2019.

Date: _____
 V. Andrew Shelp
 Ontario Land Surveyor

Notes & Legend

- Denotes Survey Monument Planted
- " Survey Monument Found
- SIB " Standard Iron Bar
- SSIB " Short Standard Iron Bar
- IB " Iron Bar
- (WIT) " Witness
- (AOG) " Annis, O'Sullivan, Vollebakk Ltd.
- Meas. " Measured
- (P1) " Plan

Distances shown on this plan are ground distances and can be converted to grid distances by multiplying by the combined scale factor of 0.9999xx.

Bearings are grid, derived from Can-Net 2016 Real Time Network GPS observations on reference points A and B, shown hereon, having a bearing of Nxx°xx'xx"W and are referenced to Specified Control Points 01919750705 and 01919770923, MTM Zone 9 (76°30' West Longitude) NAD-83 (original).

For bearing comparisons, a rotation of 0°00'00" counter-clockwise was applied to bearings on plan.

For comparison purposes, bearings shown on Plans P1... are astronomic bearings.

Coordinates are derived from Can-Net 2016 Real Time Network GPS observations referenced to Specified Control Points 01919750705 and 01919770923, MTM Zone 9 (76°30' West Longitude) NAD-83 (original).

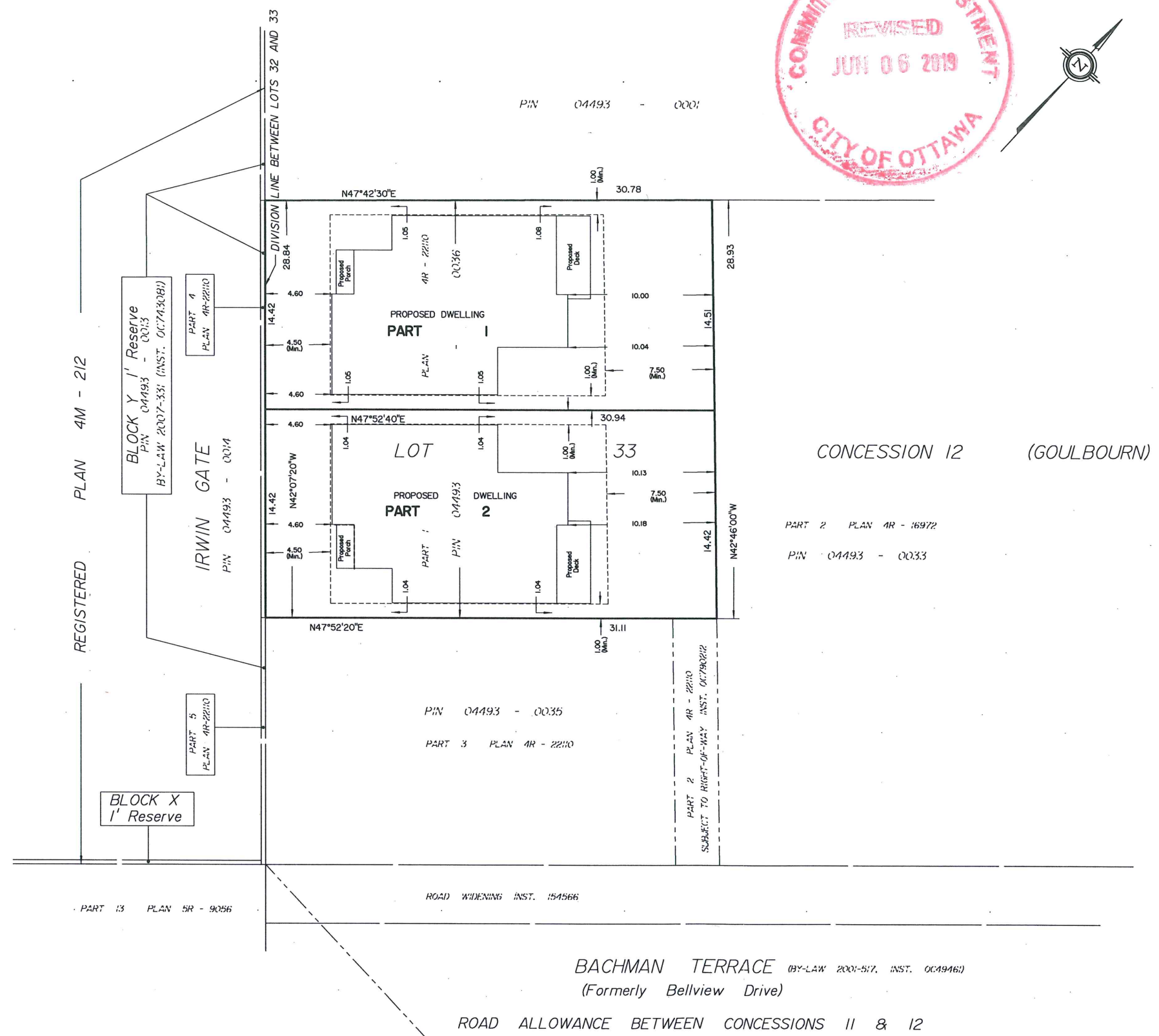
Coordinate values are to urban accuracy in accordance with O. Reg. 216/10.

.01919750705	Northing	5016816.93	Easting	360806.84
.01919770923	Northing	5013536.21	Easting	346275.92
.Point A	Northing		Easting	
.Point B	Northing		Easting	

Caution: Coordinates cannot, in themselves, be used to re-establish corners or boundaries shown on this plan.

ANNIS, O'SULLIVAN, VOLLEBEKK LTD.
 14 Concourse Gate, Suite 500
 Nepean, Ont. K2E 7S6
 Phone: (613) 727-0850 / Fax: (613) 727-1079
 Email: Nepean@aosvll.com

Ontario Land Surveyors Job No. 18339-18 GE Rego P/L 33 C 12 GO R D2



REGISTERED PLAN 4M - 212

REGISTERED PLAN 5R - 9056

BACHMAN TERRACE (BY-LAW 2001-517, INST. 0049461)

(Formerly Bellview Drive)

ROAD ALLOWANCE BETWEEN CONCESSIONS 11 & 12