

METRIC
DISTANCES AND COORDINATES SHOWN ON THIS PLAN ARE IN METRES
AND CAN BE CONVERTED TO FEET BY DIVIDING BY 0.3048

COORDINATES WERE DERIVED FROM NCC HORIZONTAL CONTROL MONUMENTS 019791337 & 019791345 MTM ZONE 9, NAD83 ORIGINAL. COORDINATES HAVE BEEN DETERMINED TO AN URBAN ACCURACY IN ACCORDANCE WITH SECTION 14(2) OF O.REG 216/10.

POINT ID	EASTING	NORTHING
133	343369.699	5005473.169
136	343216.412	5005334.679
137	343150.101	5005274.769
019791337	344655.489	5006566.795
019791345	343620.683	5005687.288

COORDINATES CANNOT IN THEMSELVES BE USED TO RE-ESTABLISH CORNERS OR BOUNDARIES SHOWN ON THIS PLAN.

SCHEDULE			
PART	LOT	CONCESSION	PIN
1	PART OF EAST HALF 6	10	PART OF 04445-0336
2			

I REQUIRE THIS PLAN TO BE DEPOSITED UNDER THE LAND TITLES ACT.
DATE -----

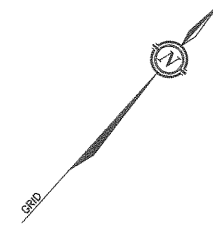
JOHN H. GUTRI, O.L.S.

PLAN 4R-
RECEIVED AND DEPOSITED
DATE -----

REPRESENTATIVE FOR LAND REGISTRAR FOR THE LAND TITLES DIVISION OF OTTAWA - CARLETON (N° 4)

Committee of Adjustment
JUL 08 2019
City of Ottawa

PLAN PREPARED FOR COMMITTEE OF ADJUSTMENT PURPOSES
APRIL 23, 2019



PLAN OF SURVEY OF
PART OF EAST HALF OF LOT 6
CONCESSION 10
GEOGRAPHIC TOWNSHIP OF GOULBOURN
CITY OF OTTAWA



FAIRHALL, MOFFATT & WOODLAND LIMITED
ONTARIO LAND SURVEYORS

- NOTES**
- BEARINGS ARE GRID, DERIVED FROM NCC HORIZONTAL CONTROL MONUMENTS 019791337 & 019791345 AND ARE REFERRED TO THE CENTRAL MERIDIAN, 76°30'W LONGITUDE MTM, ZONE 9, (NAD83 ORIGINAL).
 - DISTANCES ARE GROUND AND CAN BE CONVERTED TO GRID BY MULTIPLYING BY THE COMBINED SCALE FACTOR 0.999902.

- LEGEND**
- - SURVEY MONUMENT SET
 - - SURVEY MONUMENT FOUND
 - SSIB - SHORT STANDARD IRON BAR
 - IB - IRON BAR
 - (P) - PLAN SR-9900
 - (S) - SET
 - (M) - MEASURED
 - (NCC) - NATIONAL CAPITAL COMMISSION
 - (1175) - H. A. K. SHIPMAN, O.L.S.
 - (WT) - WITNESS
 - PIN - PROPERTY IDENTIFIER NUMBER

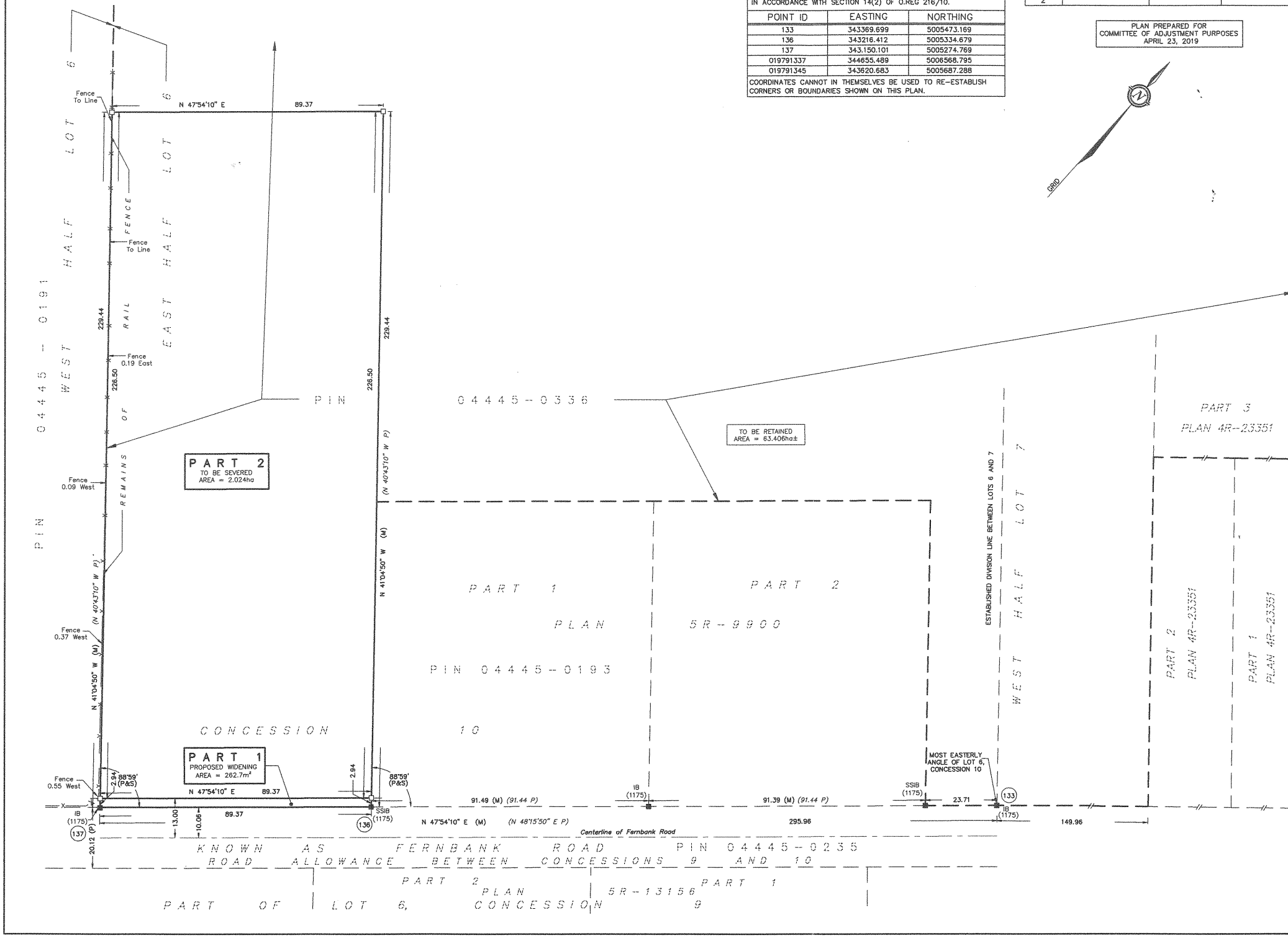
SURVEYOR'S CERTIFICATE

I CERTIFY THAT:

- THIS SURVEY AND PLAN ARE CORRECT AND IN ACCORDANCE WITH THE SURVEYS ACT, THE SURVEYORS ACT, THE LAND TITLES ACT AND THE REGULATIONS MADE UNDER THEM.
- THE SURVEY WAS COMPLETED ON APRIL , 2019.

DATE ----- JOHN H. GUTRI
ONTARIO LAND SURVEYOR

City of Ottawa
JUL 05 2019
101 Centrepoinde Dr.



Fairhall Moffatt & Woodland LIMITED OTTAWA Ontario Land Surveyors Surveying and Land Information Services 100-600 TERRY FOX DRIVE, KANATA, ONTARIO K2L 4K6 TEL: (613) 591-2580 FAX: (613) 591-1495 www.fmw.on.ca	JOB No. Z15300
	REFERENCE No. E343109, N5005390
	291 (a) - 10 GOULBOURN
	RP_153Z.DWG (dj/ss)