

METRIC
 DISTANCES AND COORDINATES SHOWN ON THIS PLAN ARE IN METRES
 AND CAN BE CONVERTED TO FEET BY DIVIDING BY 0.3048

SCHEDULE							
PART	LOT	CONCESSION	PIN	PART	LOT	CONCESSION	PIN
1				12			
2				13			
3				14			
4				15			
5				16			
6	PART OF 17	2	ALL OF 04533-2008	17	PART OF 17	2	ALL OF 04533-2008
7				18			
8				19			
9				20			
10				21			
11				22			

I REQUIRE THIS PLAN TO BE
 DEPOSITED UNDER THE
 LAND TITLES ACT.
 DATE 2018/12/18

 JOHN H. GUTRI, O.L.S.

PLAN 4R-31625
 RECEIVED AND DEPOSITED
 DATE Dec. 20 / 2018

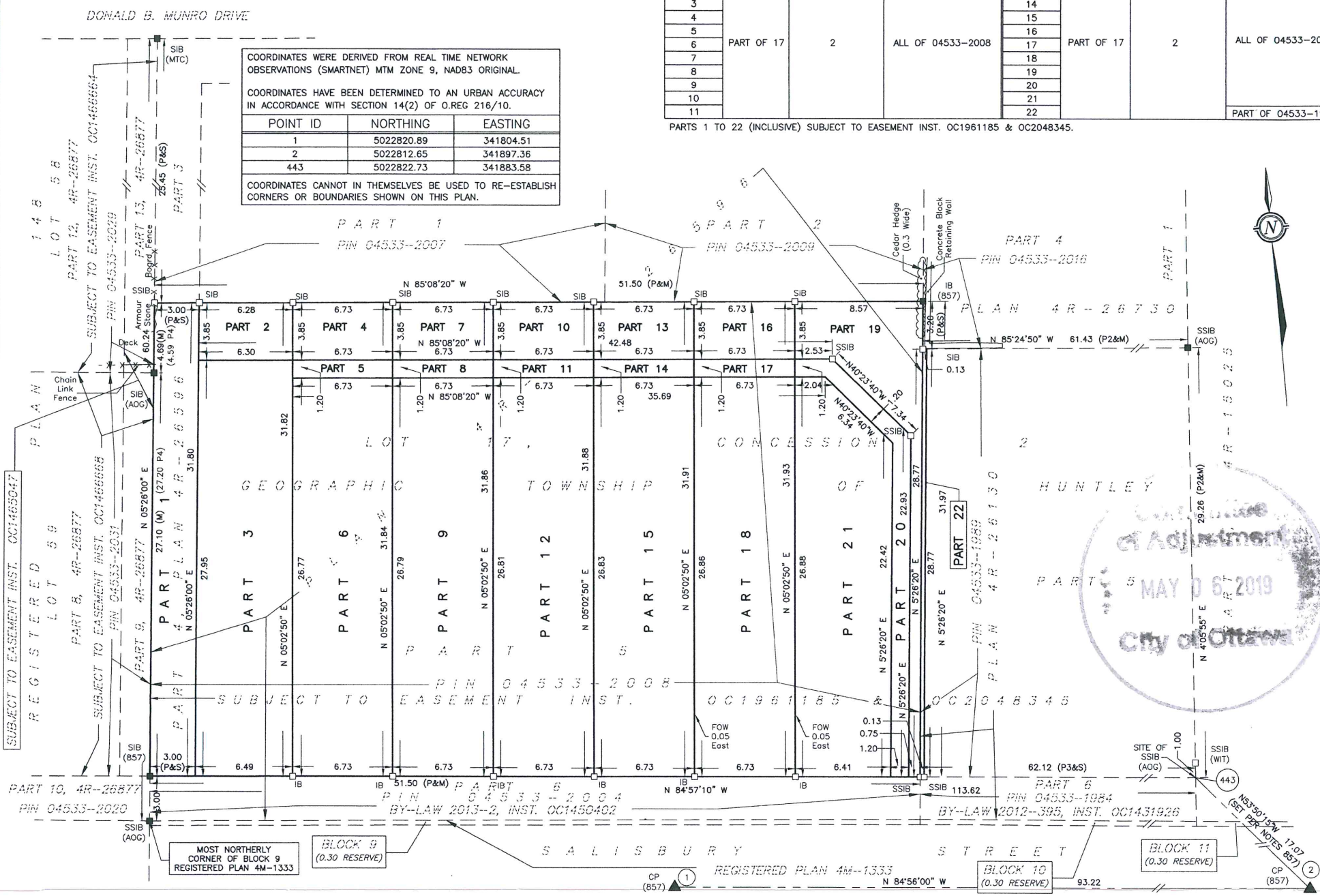
 C. CHAPMAN
 REPRESENTATIVE FOR
 LAND REGISTRAR FOR THE
 LAND TITLES DIVISION OF
 OTTAWA - CARLETON (N° 4)

COORDINATES WERE DERIVED FROM REAL TIME NETWORK
 OBSERVATIONS (SMARTNET) MTM ZONE 9, NAD83 ORIGINAL.
 COORDINATES HAVE BEEN DETERMINED TO AN URBAN ACCURACY
 IN ACCORDANCE WITH SECTION 14(2) OF O.REG 216/10.

POINT ID	NORTHING	EASTING
1	5022820.89	341804.51
2	5022812.65	341897.36
443	5022822.73	341883.58

 COORDINATES CANNOT IN THEMSELVES BE USED TO RE-ESTABLISH
 CORNERS OR BOUNDARIES SHOWN ON THIS PLAN.

PARTS 1 TO 22 (INCLUSIVE) SUBJECT TO EASEMENT INST. OC1961185 & OC2048345.



**PLAN OF SURVEY OF
 PART OF LOT 17
 CONCESSION 2
 GEOGRAPHIC TOWNSHIP OF HUNTLEY
 CITY OF OTTAWA**

SCALE 1 : 200

FAIRHALL, MOFFATT & WOODLAND LIMITED
 ONTARIO LAND SURVEYORS

- NOTES**
- BEARINGS ARE GRID, DERIVED FROM OBSERVED REFERENCE POINTS (1) AND (2) BY REAL TIME NETWORK OBSERVATIONS AND ARE REFERRED TO THE CENTRAL MERIDIAN, 76°30'W LONGITUDE MTM ZONE 9, NAD83 ORIGINAL.
 - DISTANCES ARE GROUND AND CAN BE CONVERTED TO GRID BY MULTIPLYING BY THE COMBINED SCALE FACTOR 0.999907.

- LEGEND**
- - SURVEY MONUMENT SET (S) - SET
 - - SURVEY MONUMENT FOUND (M) - MEASURED
 - SIB - STANDARD IRON BAR PIN - PROPERTY IDENTIFIER NUMBER
 - SSIB - SHORT STANDARD IRON BAR
 - IB - IRON BAR
 - CP - CONCRETE PIN
 - (P) - PLAN 4R-26596
 - (P2) - PLAN 4R-26730
 - (P3) - PLAN 4R-26130
 - (P4) - PLAN 4R-26877
 - (857) - FAIRHALL, MOFFATT & WOODLAND LIMITED, O.L.S.
 - (AOG) - ANNIS, O'SULLIVAN & VOLLEBEKK LTD., O.L.S.
 - (MTC) - MINISTRY OF TRANSPORTATION OF ONTARIO

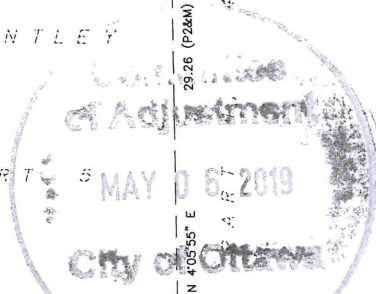
SURVEYOR'S CERTIFICATE

I CERTIFY THAT:

- THIS SURVEY AND PLAN ARE CORRECT AND IN ACCORDANCE WITH THE SURVEYS ACT, THE SURVEYORS ACT, THE LAND TITLES ACT AND THE REGULATIONS MADE UNDER THEM.
- THE SURVEY WAS COMPLETED ON NOVEMBER 15, 2018.

DATE 2018/12/18

 JOHN H. GUTRI
 ONTARIO LAND SURVEYOR



**Fairhall
 Moffatt &
 Woodland**
 LIMITED
 ONTARIO LAND SURVEYORS
 Surveying and Land Information Services
 100-600 TERRY FOX DRIVE, KANATA, ONTARIO K2L 4B6
 TEL: (613) 591-2590 FAX: (613) 591-1495
 www.fmw.on.ca

OT TAWA

JOB No.
 P 28700
 E 341790, N 5022840
 REFERENCE No.
 126 - 2 HUNTLEY
 S:\085\F28700\DRWS 2018-12-18
 rp287p_blk1.dwg (kb)