

Distances shown on this plan are ground distances and can be converted to grid distances by multiplying by the combined scale factor of 0.99993.

Bearings are grid, derived from Can-Net 2016 Real Time Network GPS observations on reference points A and B, shown hereon, having a bearing of N23°27'30"W and are referenced to Specified Control Points 01919680005 and 01919680105, MTM Zone 9 (76°30' West Longitude) NAD-83 (original).

For bearing comparisons, bearings on Plans (P2 and P4) are astronomic.

Coordinates are derived from Can-Net 2016 Real Time Network GPS observations referenced to Specified Control Points 01919680005 and 01919680105, MTM Zone 9 (76°30' West Longitude) NAD-83 (original). Coordinate values are to urban accuracy in accordance with C. Reg. 216/10.

Point A Northing 5027191.26 Easting 361496.76  
 Point B Northing 5024915.16 Easting 373971.65  
 Point A Northing 5027785.60 Easting 363152.03  
 Point B Northing 5027665.63 Easting 363204.09

Caution: Coordinates cannot, in themselves, be used to re-establish corners or boundaries shown on this plan.



SCHEDULE			
PART	LOT	PLAN	PIN
1 to 18 (inclusive)	20	235	ALL OF 04010-0063

I REQUIRE THIS PLAN TO BE DEPOSITED UNDER THE LAND TITLES ACT.  
 DATE: \_\_\_\_\_

**PLAN 4R-**  
 RECEIVED AND DEPOSITED  
 DATE: \_\_\_\_\_

E.H. HERWEYER  
 ONTARIO LAND SURVEYOR

REPRESENTATIVE FOR  
 LAND REGISTRAR FOR THE  
 LAND TITLES DIVISION OF  
 OTTAWA-CARLETON NO. 4.

**DRAFT PLAN OF SURVEY OF  
 LOT 20**  
**West Roosevelt Avenue**  
**REGISTERED PLAN 235**  
**CITY OF OTTAWA**  
 Surveyed by Annis, O'Sullivan, Vollebek Ltd.  
 Scale 1 : 200

Metric  
 DISTANCES AND COORDINATES SHOWN ON THIS PLAN  
 ARE IN METRES AND CAN BE CONVERTED TO FEET BY  
 DIVIDING BY 0.3048.

Surveyor's Certificate  
 I CERTIFY THAT:  
 1. This survey and plan are correct and in accordance with the Surveys Act, the Surveys Act and the Land Titles Act and the regulations made under them.  
 2. The survey was completed on the day of , 2018.

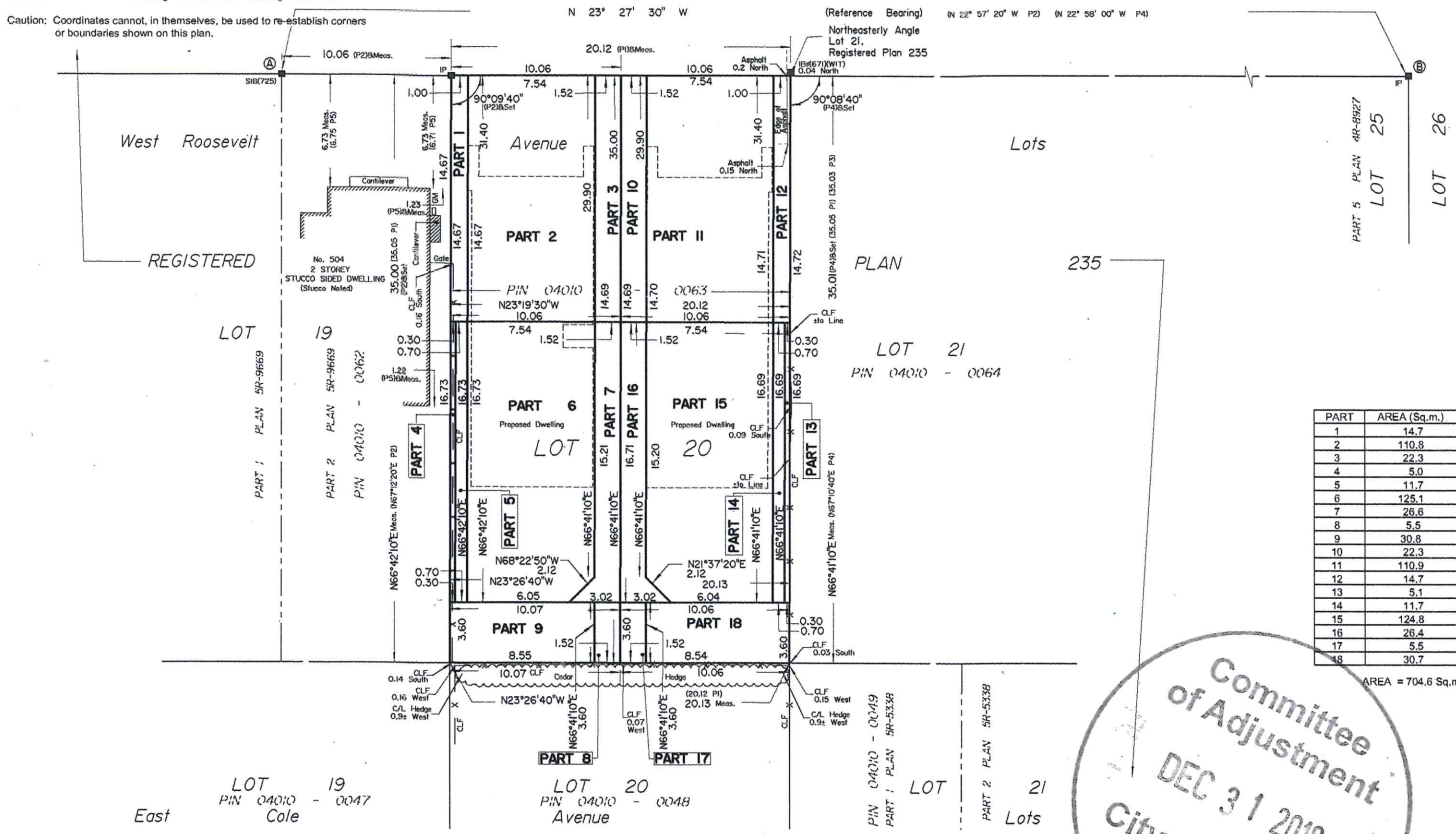
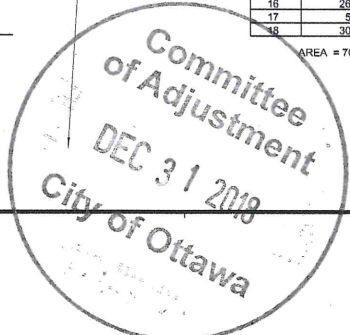
Date \_\_\_\_\_ E. H. Herweyer  
 Ontario Land Surveyor

**Notes & Legend**

Denotes	
—○—	Survey Monument Planted
—■—	Survey Monument Found
SIB	Standard Iron Bar
SSIB	Short Standard Iron Bar
IB	Iron Bar
IP	Iron Pipe
IB#	Round Iron Bar
(WIT)	Witness
Mec.	Measured
(AOG)	Annis, O'Sullivan, Vollebek Ltd.
(P1)	Registered Plan 235
(P2)	Plan 5R-9669
(P3)	Plan 5R-5338
(P4)	(AOG) Plan November 4, 1991 (Ref. 0-393-91)
(P5)	(1287) Plan August 25, 1986 (Ref. 436/86)
(P6)	(671) Plan October 22, 1984 (Ref. OT-235-7)
CLF	Chain Link Fence
BF	Board Fence
C/L	Centreline
—	Property Line

PART	AREA (Sq.m.)
1	14.7
2	110.8
3	22.3
4	5.0
5	11.7
6	125.1
7	29.6
8	5.5
9	30.8
10	22.3
11	110.9
12	14.7
13	5.1
14	11.7
15	124.8
16	26.4
17	5.5
18	30.7

AREA = 704.6 Sq.m



LOT 19  
 PIN 04010 - 0062  
 East

LOT 20  
 PIN 04010 - 0048  
 Roosevelt Avenue

LOT 21  
 PIN 04010 - 0064  
 Lots

PART 1 PLAN 5R-5338  
 PART 2 PLAN 5R-5338

**ANNIS, O'SULLIVAN, VOLLEBEK LTD.**  
 14 Concourse Gate, Suite 500  
 Nepean, Ont. K2E 7S8  
 Phone: (613) 727-0850 Fax: (613) 727-1079  
 Email: [Anniss@anniss.com](mailto:Anniss@anniss.com)  
 Ontario Land Surveyors Job No. 17801-18 Kennedyl Lt 20 Pl. 235 R. 02