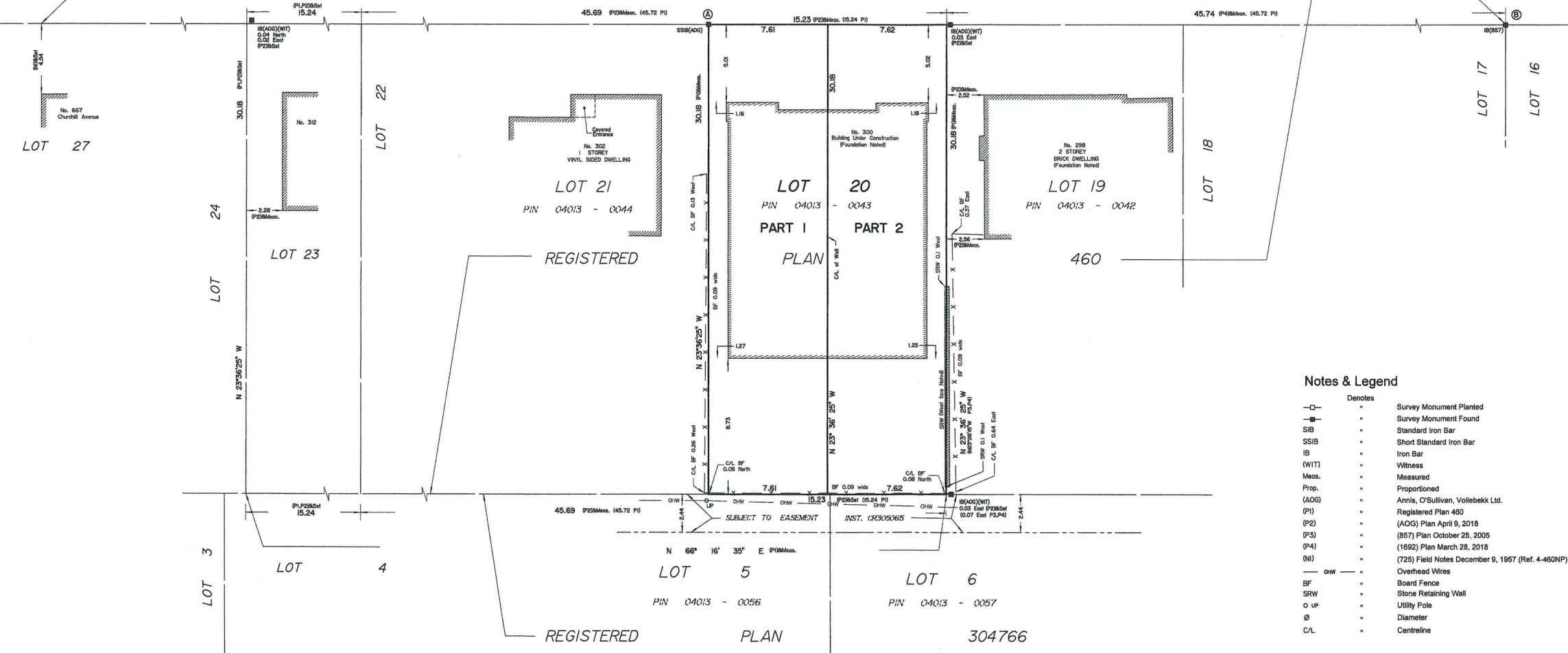




WESTHILL AVENUE (Formerly Uplands Avenue)
PIN 04013 - 0164

N 66° 16' 35" E (Reference Bearing)

CHURCHILL AVENUE NORTH
(Formerly Churchill Avenue)



I REQUIRE THIS PLAN TO BE DEPOSITED UNDER THE LAND TITLES ACT.
DATE: _____
ANDREW J. BROXHAM
ONTARIO LAND SURVEYOR
REPRESENTATIVE FOR LAND REGISTRAR FOR THE LAND TITLES DIVISION OF OTTAWA-CARLETON NO. 4.

PLAN 4R-
RECEIVED AND DEPOSITED
DATE: _____

SCHEDULE				
AREA (Sq.m)	PART	LOT	PLAN	PIN
229.8	1	20	460	ALL OF 04013-0043
229.8	2			

PLAN OF SURVEY OF
LOT 20
REGISTERED PLAN 460
CITY OF OTTAWA
Surveyed by Annis, O'Sullivan, Vollebek Ltd.

Scale 1 : 150
0 4.5 9 13.5 18 22.5 27 31.5 36 40.5 45 Metres

Metric
DISTANCES AND COORDINATES SHOWN ON THIS PLAN ARE IN METRES AND CAN BE CONVERTED TO FEET BY DIVIDING BY 0.3048.

Surveyor's Certificate
I CERTIFY THAT:
1. This survey and plan are correct and in accordance with the Surveys Act, the Surveyors Act and the Land Titles Act and the regulations made under them.
2. The survey was completed on the ___ day of _____, 2018.

Date _____
Andrew J. Broxham
Ontario Land Surveyor

Distances shown on this plan are ground distances and can be converted to grid distances by multiplying by the combined scale factor of 0.99993.

Bearings are grid, derived from Can-Net 2016 Real Time Network GPS observations on reference points A and B, shown hereon, having a bearing of N66°16'35"E and are referenced to Specified Control Points 01919680005 and 01919680105, MTM Zone 9 (78°30' West Longitude) NAD-83 (original).

For bearing comparisons, a rotation of 0°36'25" counter-clockwise was applied to bearings on plan P1, P3 and P4.

Coordinates are derived from Can-Net 2016 Real Time Network GPS observations referenced to Specified Control Points 01919680005 and 01919680105, MTM Zone 9 (78°30' West Longitude) NAD-83 (original).

Coordinate values are to urban accuracy in accordance with O. Reg. 218/10.

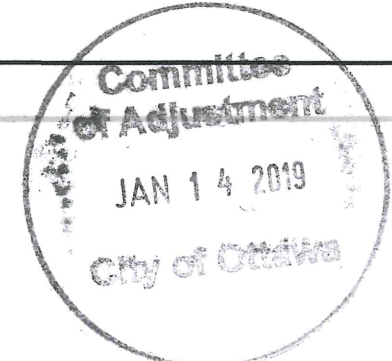
01919680005 Northing 5027161.26 Easting 381498.76
01919680105 Northing 5024915.16 Easting 373971.65
Point A Northing 5027399.91 Easting 383762.11
Point B Northing 5027424.45 Easting 383817.94

Caution: Coordinates cannot, in themselves, be used to re-establish corners or boundaries shown on this plan.

Notes & Legend

- Denotes
- Survey Monument Planted
- Survey Monument Found
- SIB Standard Iron Bar
- SSIB Short Standard Iron Bar
- IB Iron Bar
- (WIT) Witness
- Meas. Measured
- Prop. Proportioned
- (AOG) Annis, O'Sullivan, Vollebek Ltd.
- (P1) Registered Plan 460
- (P2) (AOG) Plan April 9, 2018
- (P3) (857) Plan October 25, 2005
- (P4) (1892) Plan March 28, 2018
- (N1) (725) Field Notes December 9, 1957 (Ref. 4-460NP)
- chw Overhead Wires
- BF Board Fence
- SRW Stone Retaining Wall
- o up Utility Pole
- Ø Diameter
- CL Centreline

ANNIS, O'SULLIVAN, VOLLEBEK LTD.
14 Concourse Gate, Suite 500
Nepean, Ont. K2E 7S8
Phone: (613) 727-0850 / Fax: (613) 727-1079
Email: info@anniso.com
Job No. 17819-18 Theory L1 20 Pl. 460 R D



Y:\2018\17819-18\04\01\18-18-18 Theory L1 20 Pl. 460 R D.dwg