

| 55 POPLAR STREET | | | |
|------------------------|----------------------|--------------------|--|
| VARIANCE UNIT 1 (#59) | PROVIDED | REQUIRED | |
| A * LOT WIDTH | 8.53 m | 10.0 m | |
| LOT AREA | 297.7 m ² | 270 m ² | |
| B * FRONT YARD | 0.77 m | 3.0 m | |
| REAR YARD | 0.0 m | 0.0 m | |
| CORNER SIDE YARD | N/A | N/A | |
| C * WESTERLY SIDE YARD | 0.61 m | 1.2 m | |
| D * EASTERLY SIDE YARD | 0.99 m | 1.2 m | |
| PARKING | [1]2.6m x 5.2m | 45 PER SCA | |
| E * FRONT STEP PROJE. | 0.0 m | 0.6 m | |
| F * CANOPY PROJE. | 0.0 m | 0.6 m | |
| VARIANCE UNIT 2 (#57) | | | |
| A * LOT WIDTH | 8.53 m | 10.0 m | |
| G * LOT WIDTH (POCKET) | 1.22 m | 3.0 m | |
| LOT AREA | 293.9 m ² | 270 m ² | |
| H * FRONT YARD | 0.0 m | 0.0 m | |
| I * REAR YARD | 9.18 m | 9.78 m | |
| J * CORNER SIDE YARD | N/A | N/A | |
| K * WESTERLY SIDE YARD | 0.61 m | 1.2 m | |
| L * EASTERLY SIDE YARD | 0.99 m | 1.2 m | |
| PARKING | [1]2.6m x 5.2m | 45 PER SCA | |
| M * BALCONY PROJE. | 0.61 m | 1.0 m | |
| BUILDING HEIGHT | 10.0 m | 10.0 m | |

| 59 POPLAR STREET | | | |
|-------------------------|----------------------|--------------------|--|
| VARIANCE UNIT 3 (#59) | PROVIDED | REQUIRED | |
| L * LOT WIDTH | 8.53 m | 10.0 m | |
| LOT AREA | 297.7 m ² | 270 m ² | |
| N * FRONT YARD | 0.77 m | 3.0 m | |
| O * REAR YARD | 0.0 m | 0.0 m | |
| P * CORNER SIDE YARD | N/A | N/A | |
| Q * WESTERLY SIDE YARD | 0.94 m | 1.2 m | |
| R * EASTERLY SIDE YARD | 0.65 m | 1.2 m | |
| PARKING | [1]2.6m x 5.2m | 45 PER SCA | |
| S * FRONT STEP PROJE. | 0.0 m | 0.6 m | |
| T * CANOPY PROJE. | 0.0 m | 0.6 m | |
| VARIANCE UNIT 4 (#61) | | | |
| U * LOT WIDTH | 8.53 m | 10.0 m | |
| V * LOT WIDTH (POCKET) | 1.22 m | 3.0 m | |
| LOT AREA | 297.7 m ² | 270 m ² | |
| W * FRONT YARD | 0.0 m | 0.0 m | |
| X * REAR YARD | 9.21 m | 9.78 m | |
| Y * CORNER SIDE YARD | N/A | N/A | |
| Z * WESTERLY SIDE YARD | 0.74 m | 1.2 m | |
| AA * EASTERLY SIDE YARD | 0.65 m | 1.2 m | |
| PARKING | [1]2.6m x 5.2m | 45 PER SCA | |
| AB * BALCONY PROJE. | 0.66 m | 1.0 m | |
| BUILDING HEIGHT | 10.0 m | 10.0 m | |

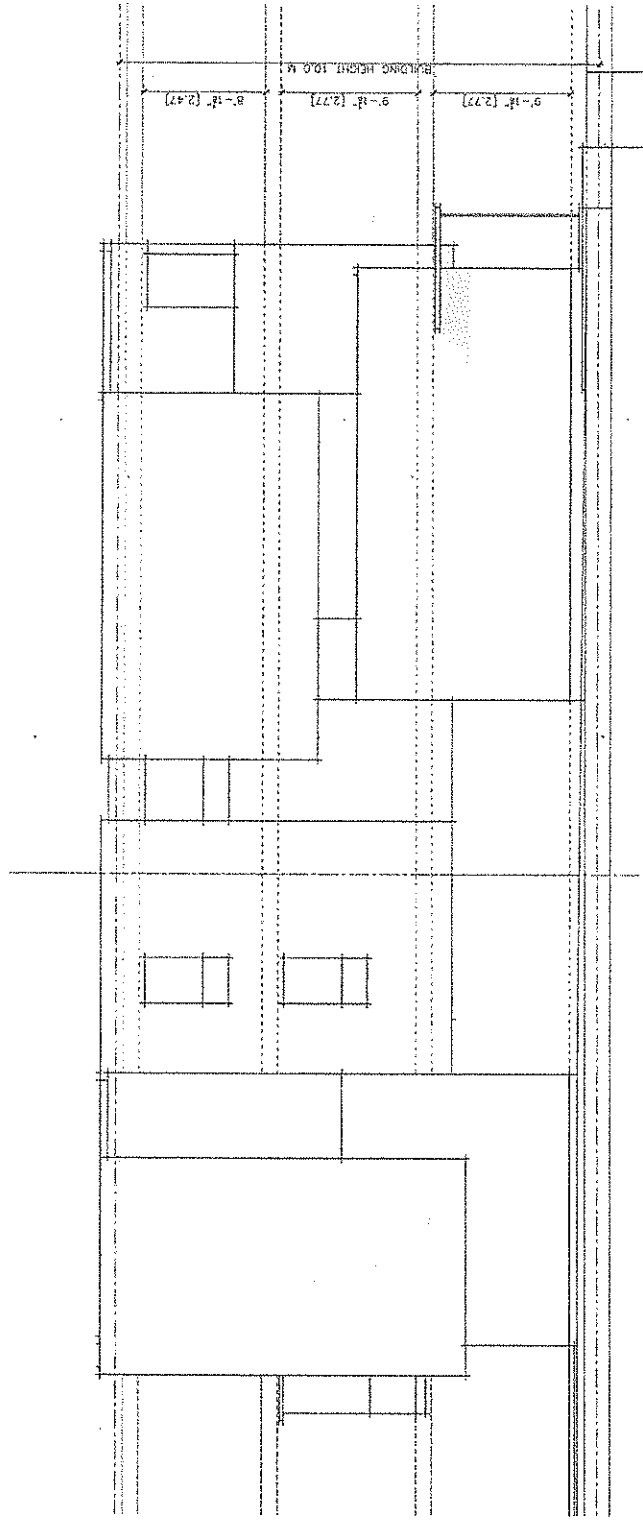


POPLAR STREET

1 SITE PLAN
3/32" = 1'-0"

UNIT 4

UNIT 3



1 WEST ELEVATION
1/8" = 1'-0"

| | | | | | |
|-----------------------------------------------------------------------------------------------------------------------------------------------|-----------------------------------------------------|--------------------------------------------------------|------------------------------------------------------|-----------------------------------------------------------------------------------------------------------------------------------------------|-----------------------------------------------------------------------------------------------------------------------------------------------|
| <small>PROFESSIONAL DESIGNER'S SEAL AND SIGNATURE REQUIRED FOR ALL SUBMISSIONS</small> <small>DATE: 1 DEC 2016 FOR EACH SUBMISSION</small> | <small>SCALE</small> <small>1/8" = 1'-0"</small> | <small>PROJECT NAME</small> 59 POPLAR STREET | <small>FORMING FILE</small> FORMS | <small>FORMING NO.</small> A4 | <small>COLLEGE</small> BRUNN |
| | <small>DATE</small> <small>1 DEC 2016</small> | <small>PROJECT NO.</small> <small>59-1-13</small> | <small>LOCATION</small> <small>OTTAWA, ON</small> | <small>PROFESSIONAL DESIGNER'S SEAL AND SIGNATURE REQUIRED FOR ALL SUBMISSIONS</small> <small>DATE: 1 DEC 2016 FOR EACH SUBMISSION</small> | <small>PROFESSIONAL DESIGNER'S SEAL AND SIGNATURE REQUIRED FOR ALL SUBMISSIONS</small> <small>DATE: 1 DEC 2016 FOR EACH SUBMISSION</small> |

