

**METRIC**  
DISTANCES AND COORDINATES SHOWN ON THIS PLAN ARE IN METRES  
AND CAN BE CONVERTED TO FEET BY DIVIDING BY 0.3048

SCHEDULE			
PART	LOT	REG'D PLAN	PIN
1	ALL OF 597	728	ALL OF 04175-0133
2			

I REQUIRE THIS PLAN TO BE  
DEPOSITED UNDER THE  
LAND TITLES ACT.

PLAN 4R-  
RECEIVED AND DEPOSITED

DATE \_\_\_\_\_

REPRESENTATIVE FOR THE  
LAND TITLES DIVISION OF  
OTTAWA - CARLETON (N° 4)

JOHN H. GUTRI, O.L.S.



PLAN OF SURVEY OF  
LOT 597  
REGISTERED PLAN 728  
CITY OF OTTAWA

SCALE 1 : 200

FAIRHALL, MOFFATT & WOODLAND LIMITED  
ONTARIO LAND SURVEYORS

COORDINATES WERE DERIVED FROM REAL TIME NETWORK  
OBSERVATIONS (SMARTNET) WTM ZONE 9, NAD83 ORIGINAL.

COORDINATES HAVE BEEN DETERMINED TO AN URBAN ACCURACY  
IN ACCORDANCE WITH SECTION 14(2) OF O.REG 216/10.

POINT ID	NORTHING	EASTING
*	*	*
*	*	*
*	*	*
*	*	*
*	*	*

COORDINATES CANNOT IN THEMSELVES BE USED TO RE-ESTABLISH  
CORNERS OR BOUNDARIES SHOWN ON THIS PLAN.

- NOTES**
- BEARINGS ARE GRID, DERIVED FROM OBSERVED REFERENCE POINTS  
© AND © BY REAL TIME NETWORK OBSERVATIONS AND ARE REFERRED  
TO THE CENTRAL MERIDIAN, 76°30'W LONGITUDE WTM ZONE 9,  
(NAD83 ORIGINAL).
  - DISTANCES ARE GRID AND CAN BE CONVERTED TO FEET BY  
MULTIPLYING BY THE COMBINED SCALE FACTOR \*\*\*\*\*.

- LEGEND**
- - SURVEY MONUMENT SET
  - - SURVEY MONUMENT FOUND
  - SB - STANDARD IRON BAR
  - SSB - SHORT STANDARD IRON BAR
  - CC - CUT CROSS
  - CP - CONCRETE PIN
  - (P) - REGISTERED PLAN 728 GR
  - (P1) - PLAN 4R-13923
  - (P2) - PLAN SR-4382
  - (P3) - PLAN 4R-16987
  - AOV - PLAN BY ANNIS, O'SULLIVAN, VOLLEBECK LTD. O.L.S.  
DATED SEPTEMBER 30, 1985
  - HPF - SURVEY BY H.R. FARLEY O.L.S. DATED OCT. 10, 1961 (REF#23-72802)
  - ARM - PLAN BY ARNETT & MARTIN O.L.S. DATED JULY 10, 1962 (REF#572-602)
  - (M) - MEASURED
  - (S) - SET
  - PW - PROPERTY IDENTIFIER NUMBER
  - UP - UTILITY POLE

**SURVEYOR'S CERTIFICATE**

I CERTIFY THAT:

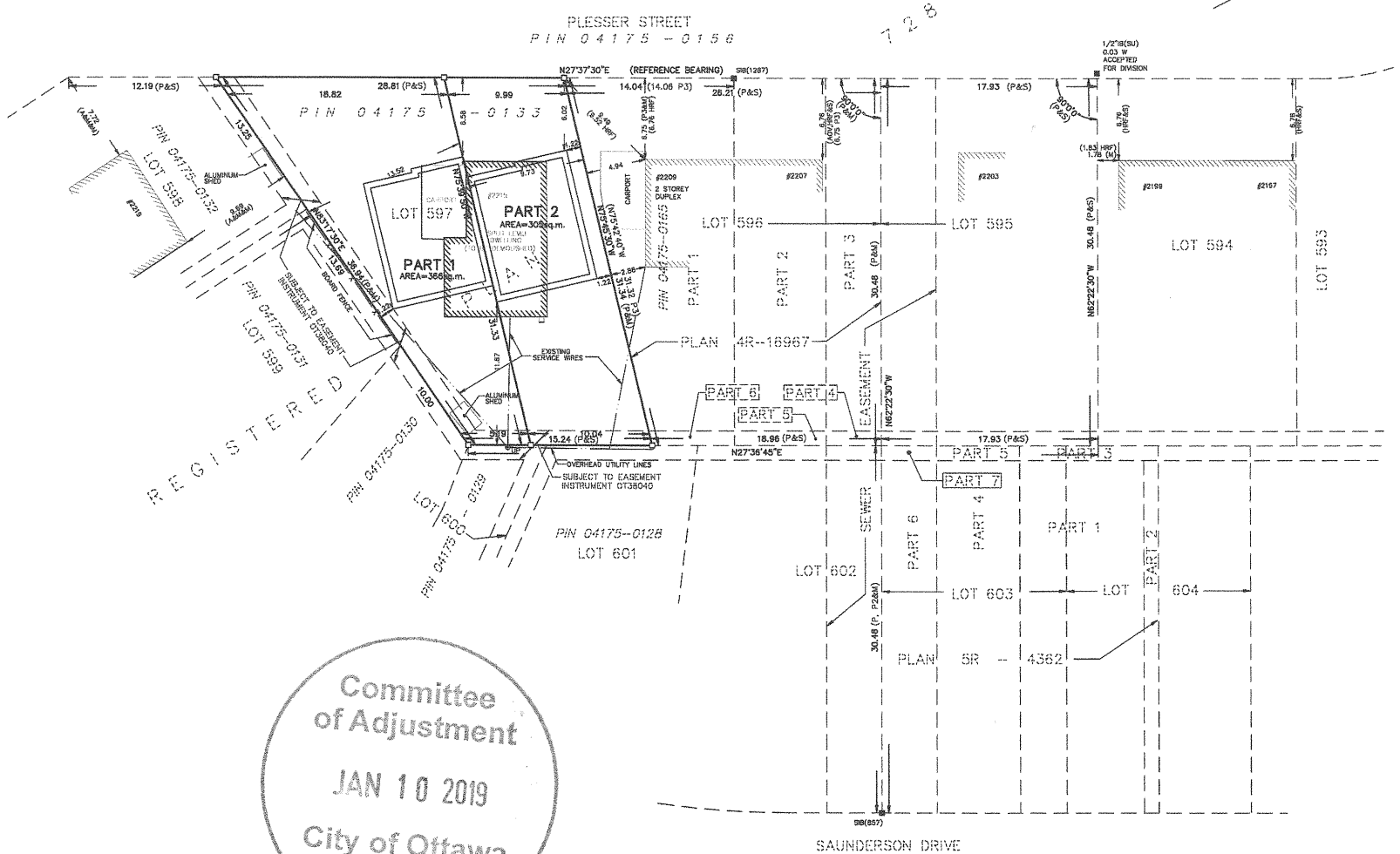
- THIS SURVEY AND PLAN ARE CORRECT AND IN ACCORDANCE  
WITH THE SURVEYS ACT, THE SURVEYORS ACT, THE LAND TITLES  
ACT AND THE REGULATIONS MADE UNDER THEM.
- THE SURVEY WAS COMPLETED ON

DATE \_\_\_\_\_ JOHN H. GUTRI  
ONTARIO LAND SURVEYOR

**Fairhall  
Moffatt &  
Woodland**  
L I B T T E D  
O N T A R I O L A N D S U R V E Y O R S

Surveying and Land Information Services  
166-608 TERRY FOX DRIVE, KANATA, ONTARIO K2L 4K6  
TEL: (613) 591-5500 FAX: (613) 591-1400  
www.fmw.on.ca

JOB No. Y23700  
E 37374  
N 5028127  
REFERENCE No.  
44(b) - 728 GR  
S 1068V437P046  
3/23/19 ref-rgp.dwg (10)



Committee  
of Adjustment  
JAN 10 2019  
City of Ottawa

PLAN PREPARED FOR COMMITTEE  
OF ADJUSTMENT PURPOSES  
DECEMBER 11, 2018