

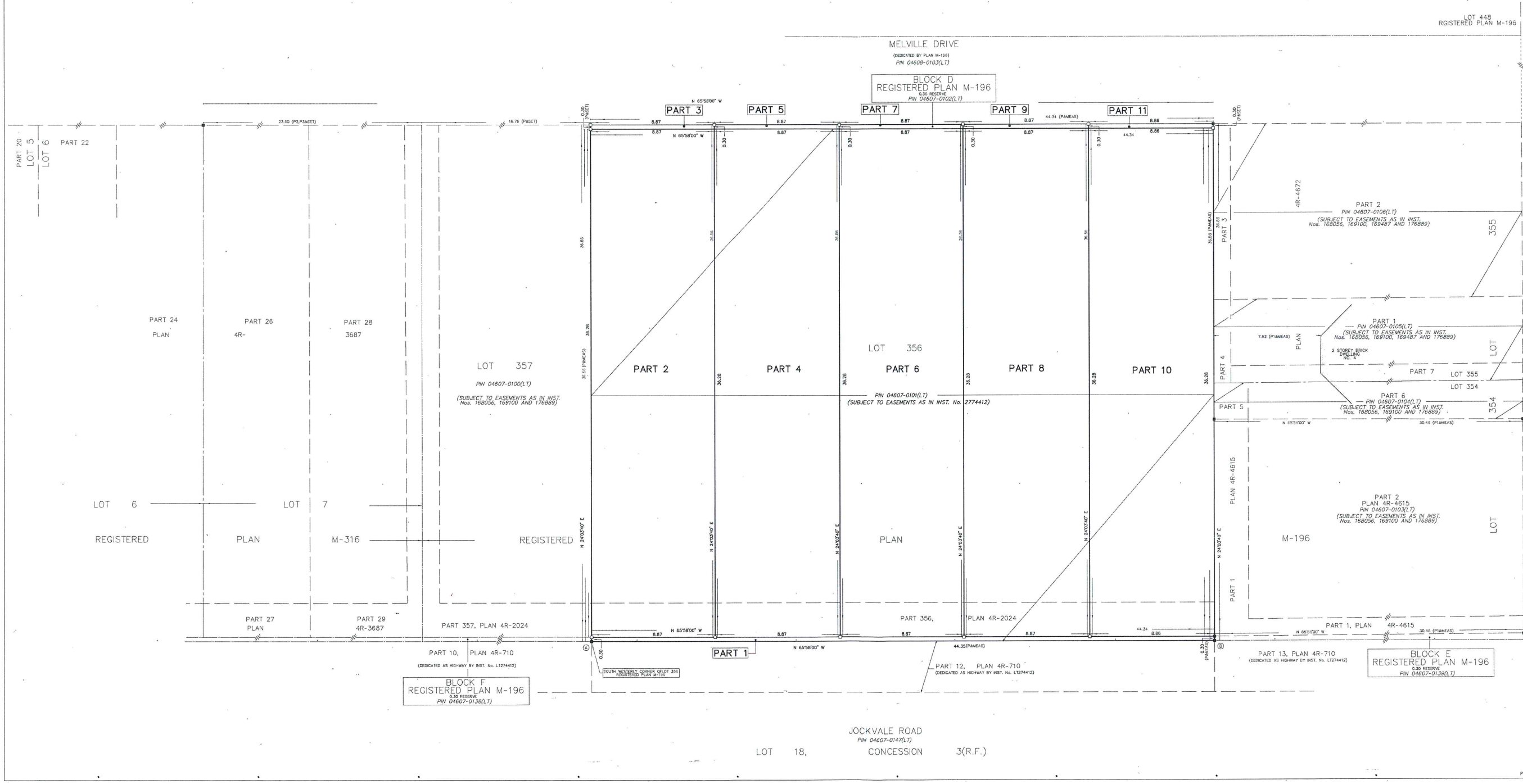


DRAFT PLAN FOR SEVERANCE

SCHEDULE				
PART	LOT	PLAN	PIN	AREA
1			04607-0101(LT)	13.30 sq m
2			04607-0102(LT)	321.80 sq m
3			04607-0103(LT)	2.66 sq m
4			04607-0104(LT)	321.80 sq m
5			04607-0105(LT)	2.66 sq m
6	356	M-196	04607-0106(LT)	321.80 sq m
7			04607-0107(LT)	2.66 sq m
8			04607-0108(LT)	321.80 sq m
9			04607-0109(LT)	2.66 sq m
10			04607-0110(LT)	292.44 sq m
11			04607-0111(LT)	2.66 sq m

1. REQUIRE THIS PLAN TO BE DEPOSITED UNDER THE LAND TITLES ACT.
 DATE: OCTOBER 19, 2014
 C.M. FOX
 ONTARIO LAND SURVEYOR

PLAN 4R-
 RECEIVED AND DEPOSITED
 DATE: _____
 REPRESENTATIVE FOR THE LAND REGISTRAR FOR THE LAND TITLES DIVISION OF OTTAWA-CARLETON (No. 4)



PLAN OF SURVEY OF
PART OF LOT 356
REGISTERED PLAN M-196
 CITY OF OTTAWA

SCALE 1 : 100
 J.D. BARNES LIMITED

METRIC DISTANCES AND/OR COORDINATES SHOWN ON THIS PLAN ARE IN METRES AND CAN BE CONVERTED TO FEET BY DIVIDING BY 0.3048.

NOTES
 BEARINGS ARE WITH GRIDS AND ARE DERIVED FROM GLOBAL NAVIGATION SATELLITE SYSTEMS (GNSS) BY REAL TIME NETWORK (RTN) OBSERVATIONS, WTM ZONE 09, NAD83 (CSRS) (2010.0).
 DISTANCES ARE GROUND AND CAN BE CONVERTED TO GRID BY MULTIPLYING BY THE CORRECTED SCALE FACTOR OF 0.999974.
 FOR BEARING COMPARISONS, A ROTATION OF 0°42'10" COUNTER-CLOCKWISE CAN BE APPLIED TO BEARINGS ON PLAN M-196.
 ALL BUILDING TIES ARE TAKEN TO CONCRETE FOUNDATION UNLESS NOTED OTHERWISE.

LEGEND

- BEARINGS SURVEY MONUMENT FOUND
- BEARINGS SURVEY MONUMENT SET
- SB BEARINGS STANDARD IRON BAR
- SMB BEARINGS SHORT STANDARD IRON BAR
- IB BEARINGS IRON BAR
- PB BEARINGS PLASTIC BAR
- WB BEARINGS WOODEN BEARINGS
- MEAS BEARINGS MEASURED
- MB BEARINGS METAL BRASS
- JDB BEARINGS J.D. BARNES LIMITED
- F&S BEARINGS FARLEY, SMITH & ASSOCIATES LTD.
- R&S BEARINGS RICHARDSON, FARLEY
- 4-7 BEARINGS REGISTERED PLAN M-196
- P1 BEARINGS PLAN 4R-4672
- P2 BEARINGS REGISTERED PLAN M-316
- P3 BEARINGS PLAN 4R-3687
- REI BEARINGS RETAINING WALL
- CAL BEARINGS CENTRELINE

ALL SET 558 AND PB MONUMENTS WERE USED DUE TO LACK OF OVERGROUND AND/OR PROXIMITY OF UNDERGROUND UTILITIES IN ACCORDANCE WITH SECTION 11 (4) OF OREG. 555/91.

INTEGRATION DATA

OBSERVED REFERENCE POINTS (ORP): WTM ZONE 09, NAD83 (CSRS) (2010.0).
 COORDINATES TO URBAN ACCURACY PER SECTION 14 (2) OF OREG. 216/10.

POINT ID	EASTING	NORTHING
ORP (A)	302 441.48	5 015 193.62
ORP (B)	302 481.88	5 015 175.56

COORDINATES CANNOT, IN THEMSELVES, BE USED TO RE-ESTABLISH CORNERS OR BOUNDARIES SHOWN ON THIS PLAN.

SURVEYOR'S CERTIFICATE
 I CERTIFY THAT:
 1. THIS SURVEY AND PLAN ARE CORRECT AND IN ACCORDANCE WITH THE SURVEYS ACT, THE SURVEYORS ACT AND THE REGULATIONS MADE UNDER THEM.
 2. THE SURVEY WAS COMPLETED ON OCTOBER 19, 2014
 C.M. FOX
 ONTARIO LAND SURVEYOR

J.D. BARNES LIMITED SURVEYING & MAPPING
 LAND INFORMATION SPECIALISTS
 2000 KENNEDY DRIVE, SUITE 204, OTTAWA, ON K1N 1N1
 T: (613) 731-7244 F: (613) 731-8155 www.jdbarnes.com

DRAWN BY: LH/CE CHECKED BY: CF REVISIONS NO: 18-10-091-00
 PREPARED FOR: MAJOR ROSSAM FILE: C:\VIR-10-09\18-10-091-00\Plan\m-196-sev-draft.dwg DATED: 10/05/14
 PLOTTED: 10/17/2015