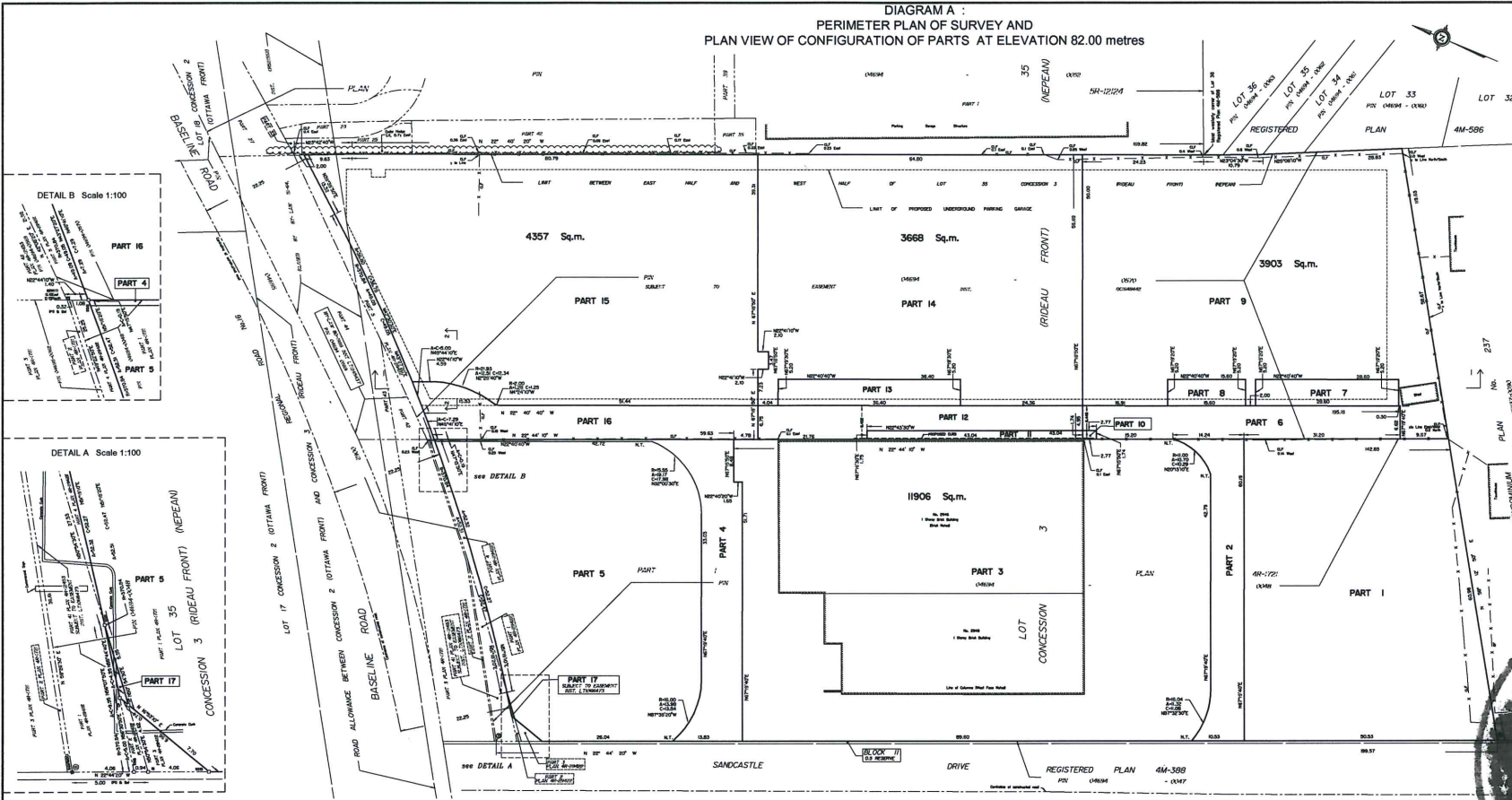


DIAGRAM A :
PERIMETER PLAN OF SURVEY AND
PLAN VIEW OF CONFIGURATION OF PARTS AT ELEVATION 82.00 metres



REGULATE THIS PLAN TO BE
RECORDED IN THE
LAND FILES ACT
DATE _____

PLAN 4R-
REVISED AND DATED
DATE _____

REGISTRAR'S REPRESENTATIVE FOR
LANDS DIVISION OF
ONTARIO

STRATA PLAN OF SURVEY OF
PART OF LOT 35
CONCESSION 3 (RIDEAU FRONT)
AND
PART OF THE ROAD ALLOWANCE
BETWEEN CONCESSION 2
(OTTAWA FRONT) AND
CONCESSION 3 (RIDEAU FRONT)
(CLOSED BY BY-LAW 51-64, INST. CR521652)
GEOGRAPHIC TOWNSHIP OF NEPEAN
CITY OF OTTAWA
Surveyed by Annis, O'Sullivan, Vollebæk Ltd.

Scale 1 : 300

Notes:
1. DISTANCES AND COORDINATE VALUES ON THIS PLAN
ARE IN METRES AND CAN BE CONVERTED TO FEET BY
DIVIDING BY 0.3048.

Surveyor's Certificate
(2018 Act)
1. The survey and plan are correct and in accordance with the Survey Act, the Surveyors Act, and the rules and regulations made under them.
2. The survey was completed on the _____ day of _____ 2018.

DATE: _____
ANNIS, O'SULLIVAN, VOLLEBÆK LTD.
City of Ottawa Surveyors

STRATA PLAN OF SURVEY OF
PART OF LOT 35
CONCESSION 3 (RIDEAU FRONT)
AND
PART OF THE ROAD ALLOWANCE
BETWEEN CONCESSION 2
(OTTAWA FRONT) AND
CONCESSION 3 (RIDEAU FRONT)
(CLOSED BY BY-LAW 51-64, INST. CR521652)
GEOGRAPHIC TOWNSHIP OF NEPEAN
CITY OF OTTAWA
Surveyed by Annis, O'Sullivan, Vollebæk Ltd.

Scale 1 : 300

Notes:
1. DISTANCES AND COORDINATE VALUES ON THIS PLAN
ARE IN METRES AND CAN BE CONVERTED TO FEET BY
DIVIDING BY 0.3048.

Surveyor's Certificate
(2018 Act)
1. The survey and plan are correct and in accordance with the Survey Act, the Surveyors Act, and the rules and regulations made under them.
2. The survey was completed on the _____ day of _____ 2018.

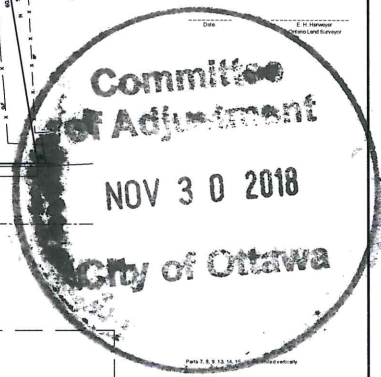
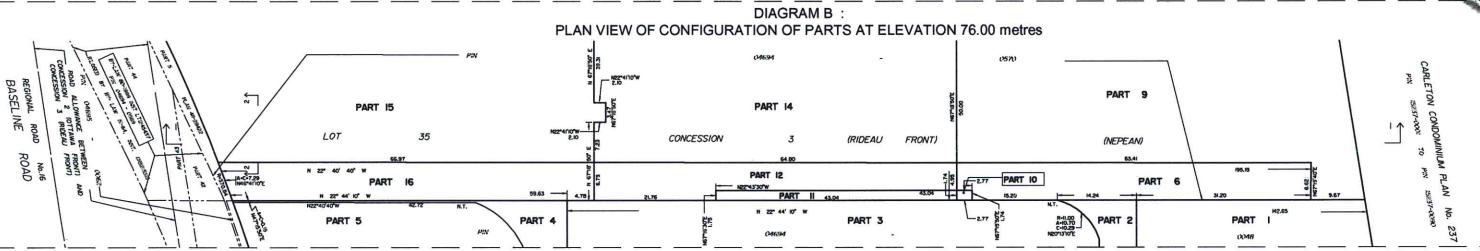


DIAGRAM B :
PLAN VIEW OF CONFIGURATION OF PARTS AT ELEVATION 76.00 metres



Notes & Legend

Legend:
- Dotted line: Boundary
- Solid line: Survey Boundary
- Dashed line: Easement
- Solid line with dots: Right of Way
- Solid line with dashes: Easement
- Solid line with long dashes: Easement
- Solid line with short dashes: Easement
- Solid line with long dashes and dots: Easement
- Solid line with short dashes and dots: Easement
- Solid line with long dashes and dots: Easement
- Solid line with short dashes and dots: Easement
- Solid line with long dashes and dots: Easement
- Solid line with short dashes and dots: Easement

Coordinates are given from Can Ad 2011 Real Time Network (RTN) coordinates referred to the Canadian Geodetic Datum 1984 and 1914/1972/1983 NAD 83 and are referred to the Canadian Geodetic Datum 1984 (CGD84) and 1914/1972/1983 NAD 83 (CGD84) (longitudinal).

Coordinates are given from Can Ad 2011 Real Time Network (RTN) coordinates referred to the Canadian Geodetic Datum 1984 and 1914/1972/1983 NAD 83 and are referred to the Canadian Geodetic Datum 1984 (CGD84) and 1914/1972/1983 NAD 83 (CGD84) (longitudinal).

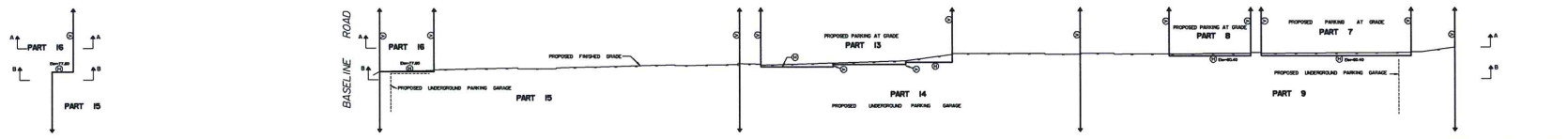
Coordinates are given from Can Ad 2011 Real Time Network (RTN) coordinates referred to the Canadian Geodetic Datum 1984 and 1914/1972/1983 NAD 83 and are referred to the Canadian Geodetic Datum 1984 (CGD84) and 1914/1972/1983 NAD 83 (CGD84) (longitudinal).

Coordinates are given from Can Ad 2011 Real Time Network (RTN) coordinates referred to the Canadian Geodetic Datum 1984 and 1914/1972/1983 NAD 83 and are referred to the Canadian Geodetic Datum 1984 (CGD84) and 1914/1972/1983 NAD 83 (CGD84) (longitudinal).

Coordinates are given from Can Ad 2011 Real Time Network (RTN) coordinates referred to the Canadian Geodetic Datum 1984 and 1914/1972/1983 NAD 83 and are referred to the Canadian Geodetic Datum 1984 (CGD84) and 1914/1972/1983 NAD 83 (CGD84) (longitudinal).

SECTION 2 Scale 1:300

SECTION 1 Scale 1:300



ANNIS, O'SULLIVAN, VOLLEBÆK LTD.
1100 SHEPPARD AVENUE EAST
SUITE 100
SCARBOROUGH, ONTARIO M1S 1T6
Phone: 416-291-2222 Fax: 416-291-2223
www.aov.com