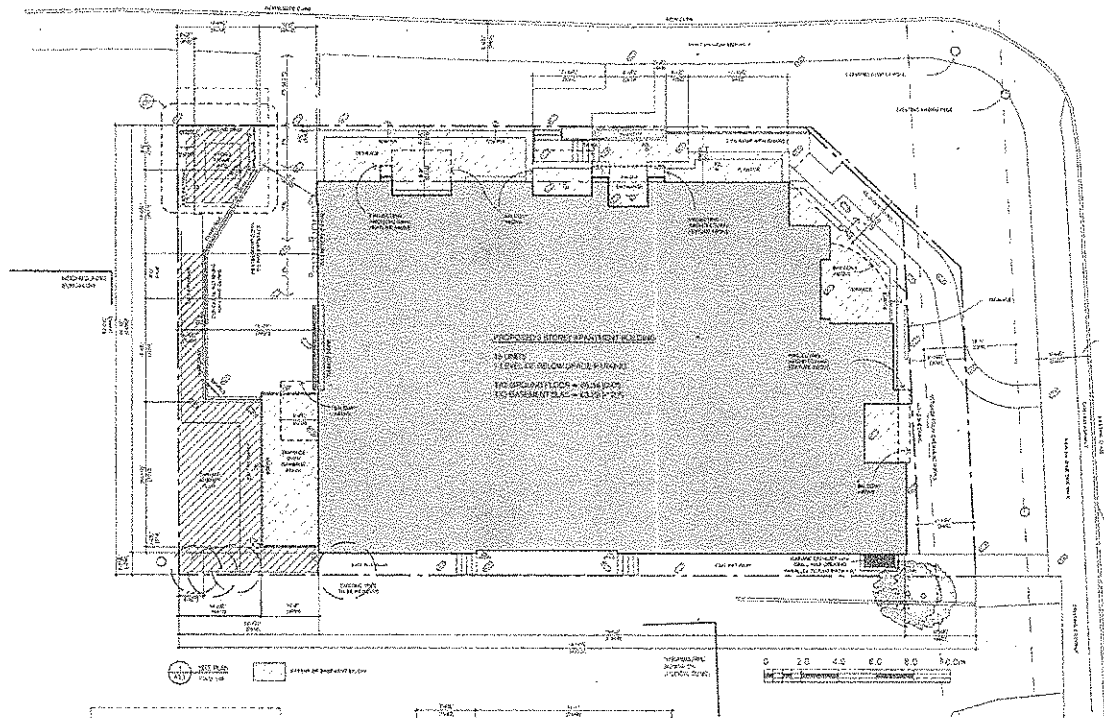
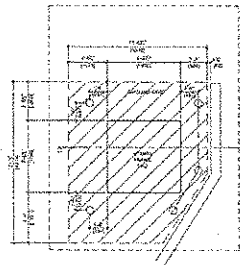
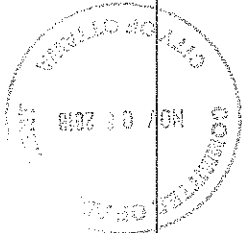




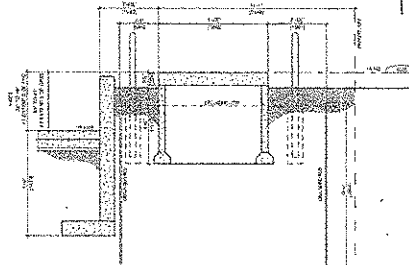
BEDALE DRIVE



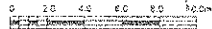
CARLING AVENUE



SECTION 1: ELEVATION OF WEST SIDE OF BUILDING



SECTION 2: ELEVATION OF EAST SIDE OF BUILDING



- NOTES:**
1. SEE ALL NOTES ON SHEETS 101-104.
 2. ALL DIMENSIONS ARE IN FEET AND INCHES UNLESS OTHERWISE NOTED.
 3. ALL FINISHES ARE TO BE AS SHOWN ON SHEETS 101-104.
 4. ALL MATERIALS AND METHODS OF CONSTRUCTION SHALL BE AS SHOWN ON SHEETS 101-104.
 5. ALL WORK SHALL BE IN ACCORDANCE WITH THE 2015 INTERNATIONAL RESIDENTIAL CODE BOOK (IRC) AND THE 2015 INTERNATIONAL ENERGY CONSERVATION CODE (IECC).
 6. ALL ELECTRICAL WORK SHALL BE IN ACCORDANCE WITH THE 2017 NATIONAL ELECTRICAL CODE (NEC).
 7. ALL MECHANICAL WORK SHALL BE IN ACCORDANCE WITH THE 2015 INTERNATIONAL MECHANICAL AND PLUMBING CODE (IMC).
 8. ALL PLUMBING WORK SHALL BE IN ACCORDANCE WITH THE 2015 INTERNATIONAL PLUMBING AND HEATING MECHANICAL CODE (IPHM).
 9. ALL CONCRETE WORK SHALL BE IN ACCORDANCE WITH THE 2015 INTERNATIONAL CONCRETE CODE (ICC).
 10. ALL MASONRY WORK SHALL BE IN ACCORDANCE WITH THE 2015 INTERNATIONAL MASONRY CODE (IMC).
 11. ALL ROOFING WORK SHALL BE IN ACCORDANCE WITH THE 2015 INTERNATIONAL ROOFING AND CEILING CODE (IRCC).
 12. ALL PAINTING WORK SHALL BE IN ACCORDANCE WITH THE 2015 INTERNATIONAL PAINTING AND COATING CODE (IPCC).
 13. ALL FINISHES SHALL BE AS SHOWN ON SHEETS 101-104.
 14. ALL WORK SHALL BE COMPLETED WITHIN THE SPECIFIED TIME FRAME.
 15. ALL WORK SHALL BE SUBJECT TO INSPECTION AND APPROVAL BY THE CITY OF CARLING PLACE.



Rosaleen J. Hill Architect Inc.

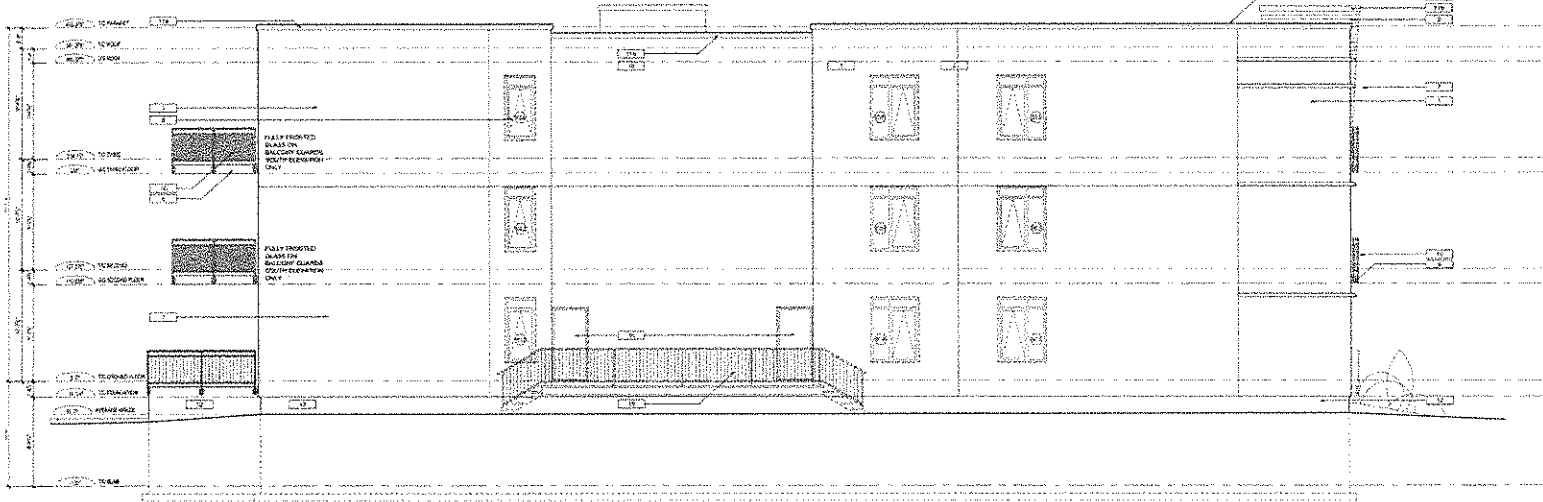
COORDINATION JAN 18/17	
1	OWNER - CARLING PLACE
2	ARCHITECT - ROSALEEN J. HILL ARCHITECT INC.
3	ENGINEER - [REDACTED]
4	PLUMBER - [REDACTED]
5	ELECTRICIAN - [REDACTED]
6	MECHANICAL - [REDACTED]
7	CONCRETE - [REDACTED]
8	PAINTING - [REDACTED]
9	ROOFING - [REDACTED]
10	MASONRY - [REDACTED]

CARLING - CARLING LOWRIDE	
SITE PLAN	
DATE: Nov 2018	SCALE: A1.1
1/11	1/11

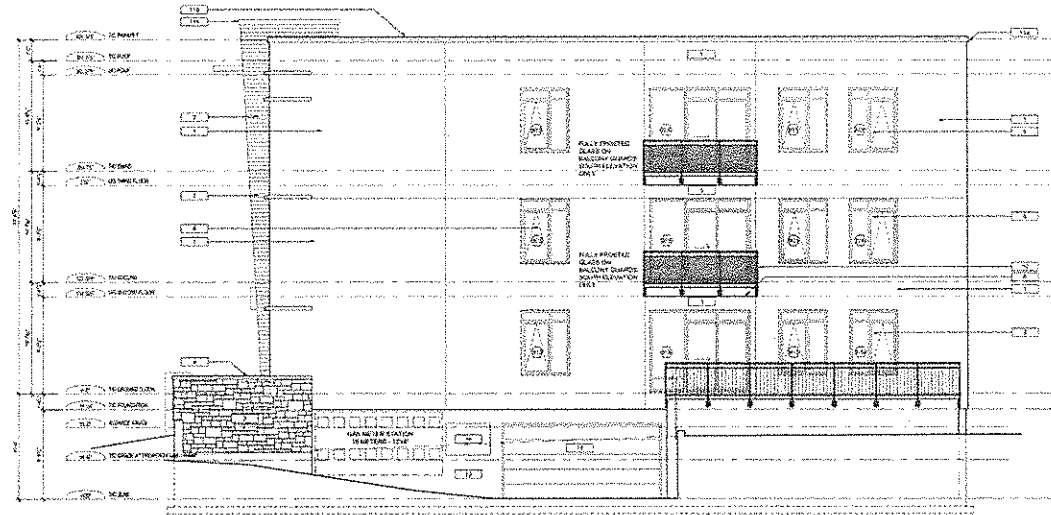
Rosaline J. Hill Architect Inc.

1	FOUNDATION
2	CONCRETE
3	BRICK
4	GLASS
5	STEEL
6	WOOD
7	ALUMINUM
8	PAINT
9	ROOFING
10	MECHANICAL
11	ELECTRICAL
12	PLUMBING
13	LANDSCAPE
14	INTERIOR FINISHES
15	EXTERIOR FINISHES

KEY TO MATERIALS	
1	CONCRETE
2	BRICK
3	GLASS
4	STEEL
5	WOOD
6	ALUMINUM
7	PAINT
8	ROOFING
9	MECHANICAL
10	ELECTRICAL
11	PLUMBING
12	LANDSCAPE
13	INTERIOR FINISHES
14	EXTERIOR FINISHES
15	FOUNDATION
16	CONCRETE
17	BRICK
18	GLASS
19	STEEL
20	WOOD
21	ALUMINUM
22	PAINT
23	ROOFING
24	MECHANICAL
25	ELECTRICAL
26	PLUMBING
27	LANDSCAPE
28	INTERIOR FINISHES
29	EXTERIOR FINISHES
30	FOUNDATION
31	CONCRETE
32	BRICK
33	GLASS
34	STEEL
35	WOOD
36	ALUMINUM
37	PAINT
38	ROOFING
39	MECHANICAL
40	ELECTRICAL
41	PLUMBING
42	LANDSCAPE
43	INTERIOR FINISHES
44	EXTERIOR FINISHES
45	FOUNDATION
46	CONCRETE
47	BRICK
48	GLASS
49	STEEL
50	WOOD
51	ALUMINUM
52	PAINT
53	ROOFING
54	MECHANICAL
55	ELECTRICAL
56	PLUMBING
57	LANDSCAPE
58	INTERIOR FINISHES
59	EXTERIOR FINISHES
60	FOUNDATION
61	CONCRETE
62	BRICK
63	GLASS
64	STEEL
65	WOOD
66	ALUMINUM
67	PAINT
68	ROOFING
69	MECHANICAL
70	ELECTRICAL
71	PLUMBING
72	LANDSCAPE
73	INTERIOR FINISHES
74	EXTERIOR FINISHES
75	FOUNDATION
76	CONCRETE
77	BRICK
78	GLASS
79	STEEL
80	WOOD
81	ALUMINUM
82	PAINT
83	ROOFING
84	MECHANICAL
85	ELECTRICAL
86	PLUMBING
87	LANDSCAPE
88	INTERIOR FINISHES
89	EXTERIOR FINISHES
90	FOUNDATION
91	CONCRETE
92	BRICK
93	GLASS
94	STEEL
95	WOOD
96	ALUMINUM
97	PAINT
98	ROOFING
99	MECHANICAL
100	ELECTRICAL
101	PLUMBING
102	LANDSCAPE
103	INTERIOR FINISHES
104	EXTERIOR FINISHES
105	FOUNDATION
106	CONCRETE
107	BRICK
108	GLASS
109	STEEL
110	WOOD
111	ALUMINUM
112	PAINT
113	ROOFING
114	MECHANICAL
115	ELECTRICAL
116	PLUMBING
117	LANDSCAPE
118	INTERIOR FINISHES
119	EXTERIOR FINISHES
120	FOUNDATION
121	CONCRETE
122	BRICK
123	GLASS
124	STEEL
125	WOOD
126	ALUMINUM
127	PAINT
128	ROOFING
129	MECHANICAL
130	ELECTRICAL
131	PLUMBING
132	LANDSCAPE
133	INTERIOR FINISHES
134	EXTERIOR FINISHES
135	FOUNDATION
136	CONCRETE
137	BRICK
138	GLASS
139	STEEL
140	WOOD
141	ALUMINUM
142	PAINT
143	ROOFING
144	MECHANICAL
145	ELECTRICAL
146	PLUMBING
147	LANDSCAPE
148	INTERIOR FINISHES
149	EXTERIOR FINISHES
150	FOUNDATION
151	CONCRETE
152	BRICK
153	GLASS
154	STEEL
155	WOOD
156	ALUMINUM
157	PAINT
158	ROOFING
159	MECHANICAL
160	ELECTRICAL
161	PLUMBING
162	LANDSCAPE
163	INTERIOR FINISHES
164	EXTERIOR FINISHES
165	FOUNDATION
166	CONCRETE
167	BRICK
168	GLASS
169	STEEL
170	WOOD
171	ALUMINUM
172	PAINT
173	ROOFING
174	MECHANICAL
175	ELECTRICAL
176	PLUMBING
177	LANDSCAPE
178	INTERIOR FINISHES
179	EXTERIOR FINISHES
180	FOUNDATION
181	CONCRETE
182	BRICK
183	GLASS
184	STEEL
185	WOOD
186	ALUMINUM
187	PAINT
188	ROOFING
189	MECHANICAL
190	ELECTRICAL
191	PLUMBING
192	LANDSCAPE
193	INTERIOR FINISHES
194	EXTERIOR FINISHES
195	FOUNDATION
196	CONCRETE
197	BRICK
198	GLASS
199	STEEL
200	WOOD
201	ALUMINUM
202	PAINT
203	ROOFING
204	MECHANICAL
205	ELECTRICAL
206	PLUMBING
207	LANDSCAPE
208	INTERIOR FINISHES
209	EXTERIOR FINISHES
210	FOUNDATION
211	CONCRETE
212	BRICK
213	GLASS
214	STEEL
215	WOOD
216	ALUMINUM
217	PAINT
218	ROOFING
219	MECHANICAL
220	ELECTRICAL
221	PLUMBING
222	LANDSCAPE
223	INTERIOR FINISHES
224	EXTERIOR FINISHES
225	FOUNDATION
226	CONCRETE
227	BRICK
228	GLASS
229	STEEL
230	WOOD
231	ALUMINUM
232	PAINT
233	ROOFING
234	MECHANICAL
235	ELECTRICAL
236	PLUMBING
237	LANDSCAPE
238	INTERIOR FINISHES
239	EXTERIOR FINISHES
240	FOUNDATION
241	CONCRETE
242	BRICK
243	GLASS
244	STEEL
245	WOOD
246	ALUMINUM
247	PAINT
248	ROOFING
249	MECHANICAL
250	ELECTRICAL
251	PLUMBING
252	LANDSCAPE
253	INTERIOR FINISHES
254	EXTERIOR FINISHES
255	FOUNDATION
256	CONCRETE
257	BRICK
258	GLASS
259	STEEL
260	WOOD
261	ALUMINUM
262	PAINT
263	ROOFING
264	MECHANICAL
265	ELECTRICAL
266	PLUMBING
267	LANDSCAPE
268	INTERIOR FINISHES
269	EXTERIOR FINISHES
270	FOUNDATION
271	CONCRETE
272	BRICK
273	GLASS
274	STEEL
275	WOOD
276	ALUMINUM
277	PAINT
278	ROOFING
279	MECHANICAL
280	ELECTRICAL
281	PLUMBING
282	LANDSCAPE
283	INTERIOR FINISHES
284	EXTERIOR FINISHES
285	FOUNDATION
286	CONCRETE
287	BRICK
288	GLASS
289	STEEL
290	WOOD
291	ALUMINUM
292	PAINT
293	ROOFING
294	MECHANICAL
295	ELECTRICAL
296	PLUMBING
297	LANDSCAPE
298	INTERIOR FINISHES
299	EXTERIOR FINISHES
300	FOUNDATION
301	CONCRETE
302	BRICK
303	GLASS
304	STEEL
305	WOOD
306	ALUMINUM
307	PAINT
308	ROOFING
309	MECHANICAL
310	ELECTRICAL
311	PLUMBING
312	LANDSCAPE
313	INTERIOR FINISHES
314	EXTERIOR FINISHES
315	FOUNDATION
316	CONCRETE
317	BRICK
318	GLASS
319	STEEL
320	WOOD
321	ALUMINUM
322	PAINT
323	ROOFING
324	MECHANICAL
325	ELECTRICAL
326	PLUMBING
327	LANDSCAPE
328	INTERIOR FINISHES
329	EXTERIOR FINISHES
330	FOUNDATION
331	CONCRETE
332	BRICK
333	GLASS
334	STEEL
335	WOOD
336	ALUMINUM
337	PAINT
338	ROOFING
339	MECHANICAL
340	ELECTRICAL
341	PLUMBING
342	LANDSCAPE
343	INTERIOR FINISHES
344	EXTERIOR FINISHES
345	FOUNDATION
346	CONCRETE
347	BRICK
348	GLASS
349	STEEL
350	WOOD
351	ALUMINUM
352	PAINT
353	ROOFING
354	MECHANICAL
355	ELECTRICAL
356	PLUMBING
357	LANDSCAPE
358	INTERIOR FINISHES
359	EXTERIOR FINISHES
360	FOUNDATION
361	CONCRETE
362	BRICK
363	GLASS
364	STEEL
365	WOOD
366	ALUMINUM
367	PAINT
368	ROOFING
369	MECHANICAL
370	ELECTRICAL
371	PLUMBING
372	LANDSCAPE
373	INTERIOR FINISHES
374	EXTERIOR FINISHES
375	FOUNDATION
376	CONCRETE
377	BRICK
378	GLASS
379	STEEL
380	WOOD
381	ALUMINUM
382	PAINT
383	ROOFING
384	MECHANICAL
385	ELECTRICAL
386	PLUMBING
387	LANDSCAPE
388	INTERIOR FINISHES
389	EXTERIOR FINISHES
390	FOUNDATION
391	CONCRETE
392	BRICK
393	GLASS
394	STEEL
395	WOOD
396	ALUMINUM
397	PAINT
398	ROOFING
399	MECHANICAL
400	ELECTRICAL
401	PLUMBING
402	LANDSCAPE
403	INTERIOR FINISHES
404	EXTERIOR FINISHES
405	FOUNDATION
406	CONCRETE
407	BRICK
408	GLASS
409	STEEL
410	WOOD
411	ALUMINUM
412	PAINT
413	ROOFING
414	MECHANICAL
415	ELECTRICAL
416	PLUMBING
417	LANDSCAPE
418	INTERIOR FINISHES
419	EXTERIOR FINISHES
420	FOUNDATION
421	CONCRETE
422	BRICK
423	GLASS
424	STEEL
425	WOOD
426	ALUMINUM
427	PAINT
428	ROOFING
429	MECHANICAL
430	ELECTRICAL
431	PLUMBING
432	LANDSCAPE
433	INTERIOR FINISHES
434	EXTERIOR FINISHES
435	FOUNDATION
436	CONCRETE
437	BRICK
438	GLASS
439	STEEL
440	WOOD
441	ALUMINUM
442	PAINT
443	ROOFING
444	MECHANICAL
445	ELECTRICAL
446	PLUMBING
447	LANDSCAPE
448	INTERIOR FINISHES
449	EXTERIOR FINISHES
450	FOUNDATION
451	CONCRETE
452	BRICK
453	GLASS
454	STEEL
455	WOOD
456	ALUMINUM
457	PAINT
458	ROOFING
459	MECHANICAL
460	ELECTRICAL
461	PLUMBING
462	LANDSCAPE
463	INTERIOR FINISHES
464	EXTERIOR FINISHES
465	FOUNDATION
466	CONCRETE
467	BRICK
468	GLASS
469	STEEL
470	WOOD
471	ALUMINUM
472	PAINT
473	ROOFING
474	MECHANICAL
475	ELECTRICAL
476	PLUMBING
477	LANDSCAPE
478	INTERIOR FINISHES
479	EXTERIOR FINISHES
480	FOUNDATION
481	CONCRETE
482	BRICK
483	GLASS
484	STEEL
485	WOOD
486	ALUMINUM
487	PAINT
488	ROOFING
489	MECHANICAL
490	ELECTRICAL
491	PLUMBING
492	LANDSCAPE
493	INTERIOR FINISHES
494	EXTERIOR FINISHES
495	FOUNDATION
496	CONCRETE
497	BRICK
498	GLASS
499	STEEL
500	WOOD



1 EAST ELEVATION
 CAR CEL



2 SOUTH ELEVATION
 CAR CEL



It is the responsibility of the applicant to provide the information required for the City of Ottawa to process the application. The City of Ottawa is not responsible for the accuracy of the information provided by the applicant. The City of Ottawa is not responsible for the accuracy of the information provided by the applicant.



CARCEL - CARLING LOWRISE
 3800 CARLING AVE. OTTAWA ONTARIO

ELEVATIONS

REVISION	NOV 2015	A2.2
1515	1515	