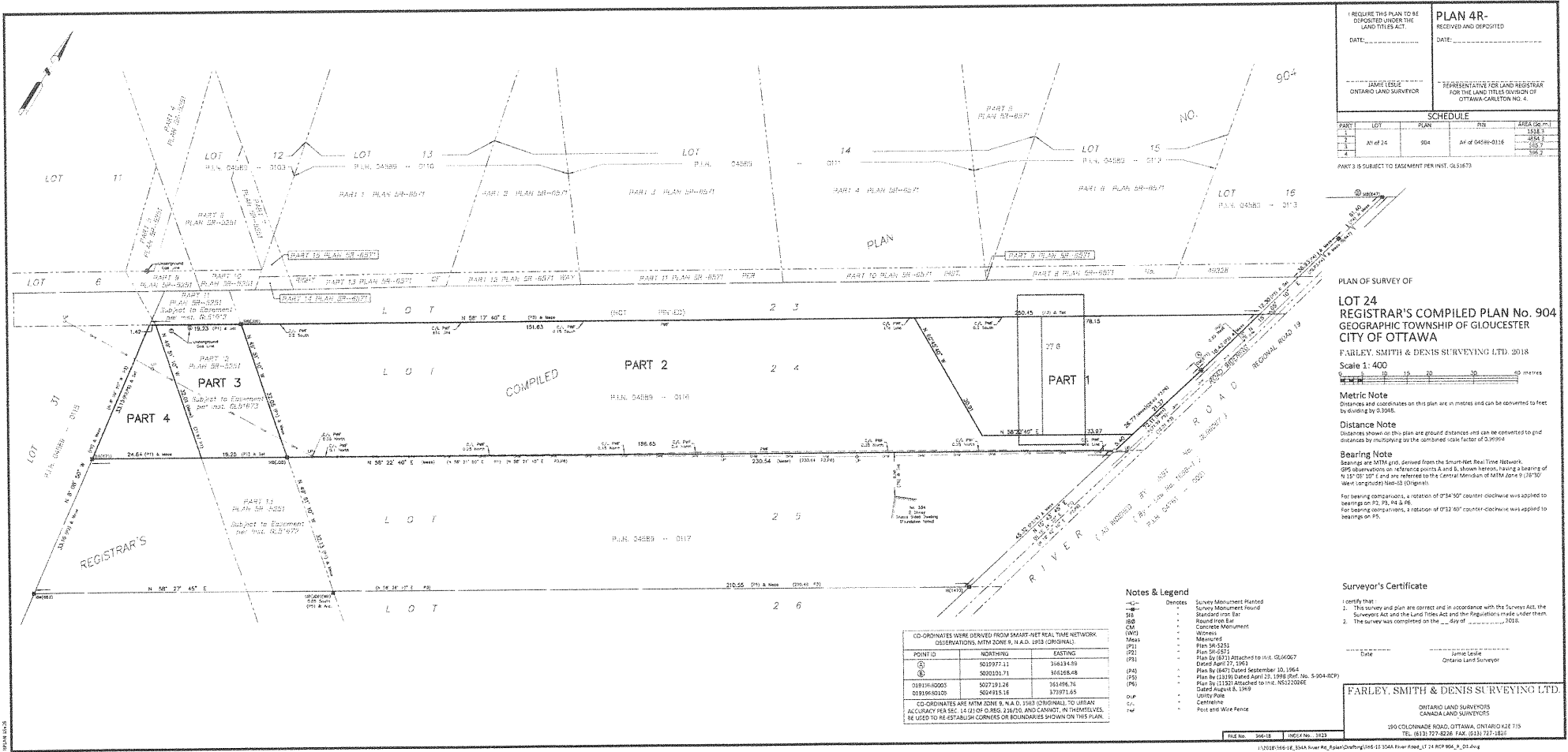


**Committee
of Adjustment**
 OCT 31 2018
City of Ottawa



I REQUIRE THIS PLAN TO BE DEPOSITED UNDER THE LAND TILES ACT.
 DATE: _____

PLAN 4R-
 RECEIVED AND DEPOSITED
 DATE: _____

JAMIE LESLIE
 ONTARIO LAND SURVEYOR

REPRESENTATIVE FOR LAND REGISTRAR
 FOR THE LAND TILES DIVISION OF
 OTTAWA-CARLETON NO. 4.

PART	LOT	PLAN	DN	AREA (SQ M)
1	At of 24	904	At of 04568-0116	1518.1
2				450.3
3				215.2
4				196.2

PART 3 IS SUBJECT TO EASEMENT PER PANT. 0216173

**PLAN OF SURVEY OF
 LOT 24
 REGISTRAR'S COMPILED PLAN No. 904
 GEOGRAPHIC TOWNSHIP OF GLOUCESTER
 CITY OF OTTAWA**

FARLEY, SMITH & DENIS SURVEYING LTD. 2018
 Scale 1: 400

Metric Note
 Distances and coordinates on this plan are in metres and can be converted to feet
 by dividing by 0.3048.

Distance Note
 Distances shown on this plan are ground distances and can be converted to grid
 distances by multiplying by the combined scale factor of 0.9994.

Bearing Note
 Bearings are NAD 83 derived from the SmartNet Real Time Network.
 GPS observations on reference points and to known targets having a bearing of
 0.15° 00' 10" E and are referred to the Central Meridian of NAD Zone 9 (18° 30'
 West longitude) (NAD 83) (101m).

For bearing observations, a rotation of 0° 34' 30" counter-clockwise was applied to
 bearings on P1, P3, P4 & P6.
 For bearing observations, a rotation of 0° 32' 40" counter-clockwise was applied to
 bearings on P5.

Surveyor's Certificate

I certify that:
 1. This survey and plan are correct and in accordance with the Survey Act, the
 Surveyors Act and the Land Titles Act and the Regulations made under them.
 2. The survey was completed on the ____ day of _____ 2018.

Date: _____
 Jamie Leslie
 Ontario Land Surveyor

FARLEY, SMITH & DENIS SURVEYING LTD.

ONTARIO LAND SURVEYORS
 CANADA LAND SURVEYORS

180 COLONNADE ROAD, OTTAWA, ONTARIO K2E 1T5
 TEL: (613) 737-8208 FAX: (613) 737-8821