

# DRAFT REFERENCE PLAN

MACKAY STREET

SCHEDULE			
PART	LOT	PLAN	AREA sq. m.
1	ALL OF LOT 23 & PART OF 24	REGISTERED PLAN 56	1872.5
2	PART OF 24	ALL OF PIN 04218-0234 (L1) & PIN 04218-0235 (L1)	SUBJ.

I REQUIRE THIS PLAN TO BE DEPOSITED UNDER THE LAND TILES ACT

DATE: July 6, 2018

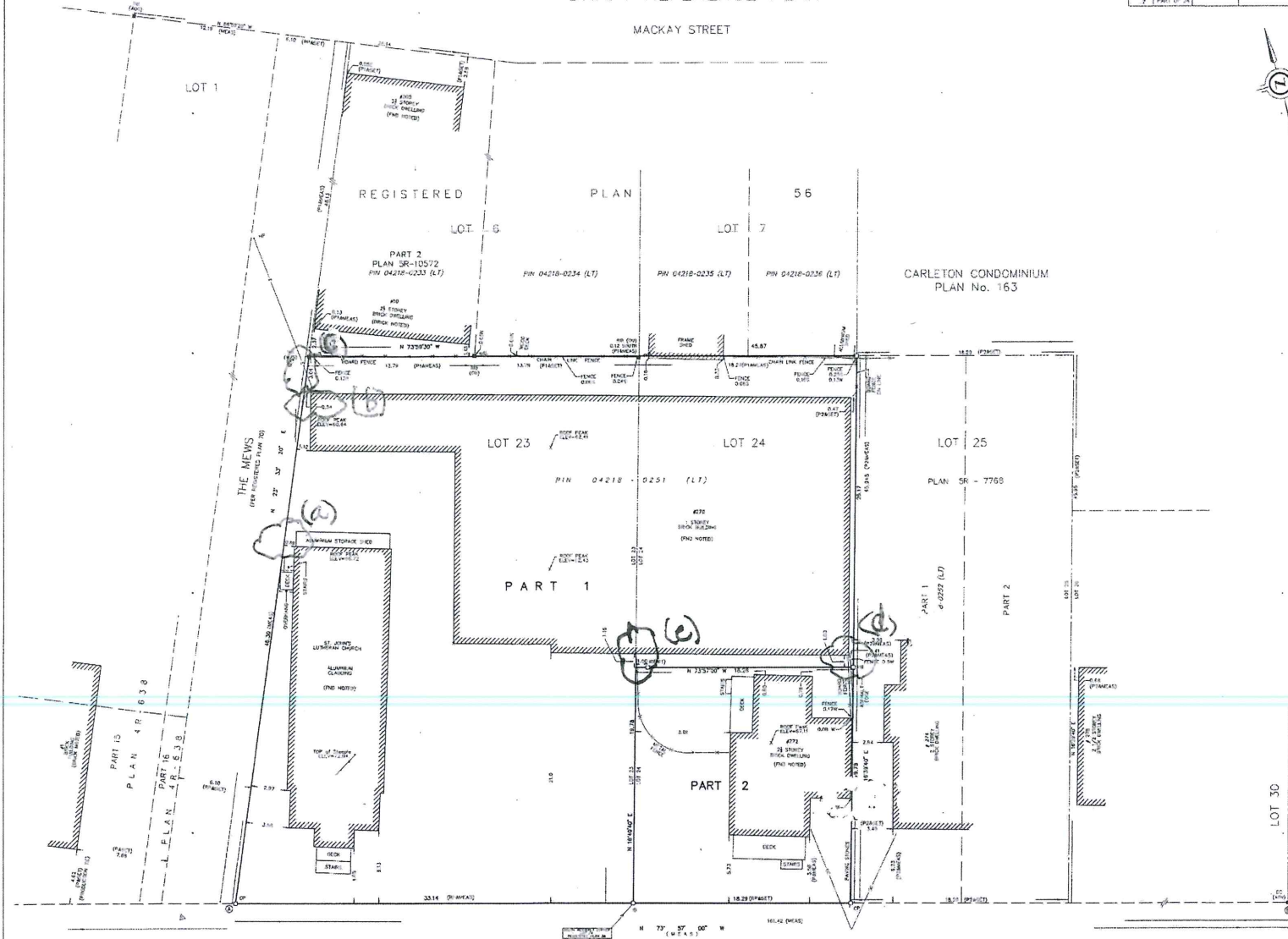
CLAUDE ZERVUS  
ONTARIO LAND SURVEYOR

**PLAN 4R-**  
RECEIVED AND DEPOSITED  
DATE: \_\_\_\_\_  
REGISTRAR FOR THE LAND TILES DIVISION OF OTTAWA-GARLTON (No. 4)



PLAN OF SURVEY OF  
LOTS 23 AND 24  
REGISTERED PLAN 56  
CITY OF OTTAWA

SCALE 1:150  
J.D. BARNES LIMITED  
METRIC DIMENSIONS AND/OR COORDINATES SHOWN ON THIS PLAN ARE IN METRES AND CAN BE CONVERTED TO FEET BY DIVIDING BY 0.3048.



**NOTES**

1. EXISTING AND PROPOSED LOT LINES AND DEED BOUNDARIES ARE PLANNED TO BE SHOWN IN THIS PLAN. EXISTING AND PROPOSED LOT LINES AND DEED BOUNDARIES NOT SHOWN IN THIS PLAN ARE NOT TO BE CONSIDERED AS PART OF THIS PLAN. METRIC DIMENSIONS AND/OR COORDINATES SHOWN ON THIS PLAN ARE IN METRES AND CAN BE CONVERTED TO FEET BY DIVIDING BY 0.3048.

**NOTES**

BEARINGS ARE GIVEN FROM EITHER REFERRED BEARINGS A AND B, OR BY BEARING MEASUREMENTS (Bearing from the Meridian).

INTEGRATION DATA			
PROPOSED BEARING POINT'S COORD.	NAD 83	UTM ZONE 18NADA (Easting)	UTM ZONE 18NADA (Northing)
POINT 10	EASTING	649 926.06	5 933 493.96
POINT 11	NORTHING	5 933 493.96	649 926.06

COORDINATES CAN BE CONVERTED TO FEET BY DIVIDING BY 0.3048. COORDINATES OF BEARINGS SHOWN ON THIS PLAN

- LEGEND**
- CONTOUR SURVEY MEASUREMENT (BY LINE)
  - CONTOUR SURVEY MEASUREMENT (BY POINT)
  - CONTOUR SURVEY MEASUREMENT (BY AREA)
  - CONTOUR SURVEY MEASUREMENT (BY DISTANCE)
  - CONTOUR SURVEY MEASUREMENT (BY BEARING)
  - CONTOUR SURVEY MEASUREMENT (BY BEARING AND DISTANCE)
  - CONTOUR SURVEY MEASUREMENT (BY BEARING AND DISTANCE AND BEARING)
  - CONTOUR SURVEY MEASUREMENT (BY BEARING AND DISTANCE AND BEARING AND DISTANCE)
  - CONTOUR SURVEY MEASUREMENT (BY BEARING AND DISTANCE AND BEARING AND DISTANCE AND BEARING)
  - CONTOUR SURVEY MEASUREMENT (BY BEARING AND DISTANCE AND BEARING AND DISTANCE AND BEARING AND DISTANCE)
  - CONTOUR SURVEY MEASUREMENT (BY BEARING AND DISTANCE AND BEARING AND DISTANCE AND BEARING AND DISTANCE AND BEARING)



**SURVEYOR'S CERTIFICATE**  
I, THE SURVEYOR, HEREBY CERTIFY THAT THE SURVEY AND PLAN ARE CORRECT AND IN ACCORDANCE WITH THE SURVEY ACT AND THE SUBORDINATE ACT AND THE LAND TILES ACT AND THE REGULATIONS MADE UNDER THEM.

DATE: July 16, 2018

CLAUDE ZERVUS  
ONTARIO LAND SURVEYOR

**J.D. BARNES** REGISTERED LAND INFORMATION SPECIALIST

170-102-8600

17-10-102-8600

17-10-102-8600

CRICHON STREET  
FORMERLY CLARK STREET  
PIN 04218-0330 (L1)