

I REQUIRE THIS PLAN TO BE DEPOSITED UNDER THE LAND TITLES ACT.  
DATE: \_\_\_\_\_

PLAN 4R- RECEIVED AND DEPOSITED  
DATE: \_\_\_\_\_

V. ANDREW SHELPS  
ONTARIO LAND SURVEYOR

REPRESENTATIVE FOR THE LAND TITLES DIVISION OF OTTAWA-CARLETON NO. 4.

AREA Sq.m	PART	LOT	PLAN	PIN
307	1	PART OF 20	204	ALL OF 04016-0094
307	2			

**DRAFT PLAN OF SURVEY OF**  
**LOT 20**  
**(East Edison Avenue)**  
**REGISTERED PLAN 204**  
**CITY OF OTTAWA**  
Surveyed by Annis, O'Sullivan, Vollebek Ltd.



DISTANCES AND COORDINATES SHOWN ON THIS PLAN ARE IN METRES AND CAN BE CONVERTED TO FEET BY MULTIPLYING BY 0.3048.

**Surveyor's Certificate**  
I CERTIFY THAT:  
1. This survey and plan are correct and in accordance with the Surveys Act, the Surveyors Act and the Land Titles Act and the regulations made under them.  
2. The survey was completed on the \_\_\_\_ day of \_\_\_\_\_, 2018.



Date: \_\_\_\_\_  
V. Andrew Shelps  
Ontario Land Surveyor

- Notes & Legend**
- Denotes Survey Monument Planted
  - Survey Monument Found
  - SIB Standard Iron Bar
  - SSIB Short Standard Iron Bar
  - IB Iron Bar
  - WT Witness
  - (AOG) Annis, O'Sullivan, Vollebek Ltd.
  - Meas. Measured
  - (P1) Registered Plan 204
  - (P2) Plan 5R-11164
  - (P3) Plan 5R-9093
  - (P4) (1287) Plan September 22, 2010
  - (P5) (725) Plan December 28, 1952
  - (P6) Plan 5R-11107
  - (P7) (857) Plan July 20, 1972 (Ref. 45-204 NP)
  - (P8) (AOG) Plan October 25, 1990 (0-464-90)
  - (P9) (725) Plan July 19, 1988 (317-88)
  - (P10) (AOG) Plan February 3, 1987 (25-87)
  - (P11) (AOG) Plan December 21, 2016 (Ref. 16717-16)
  - (P12) Plan 4R-28396

Distances shown on this plan are ground distances and can be converted to grid distances by multiplying by the combined scale factor of 0.99990x.  
Bearings are grid, derived from Can-Net 2016 Real Time Network GPS observations on reference points A and B, shown hereon, having a bearing of N00°00'00"W and are referenced to Specified Control Points 01919680005 and 01919750705, MTM Zone 9 (76°30' West Longitude) NAD-83 (original).

For bearing comparisons, a rotation of 0°00'00" counter-clockwise was applied to bearings on plan.

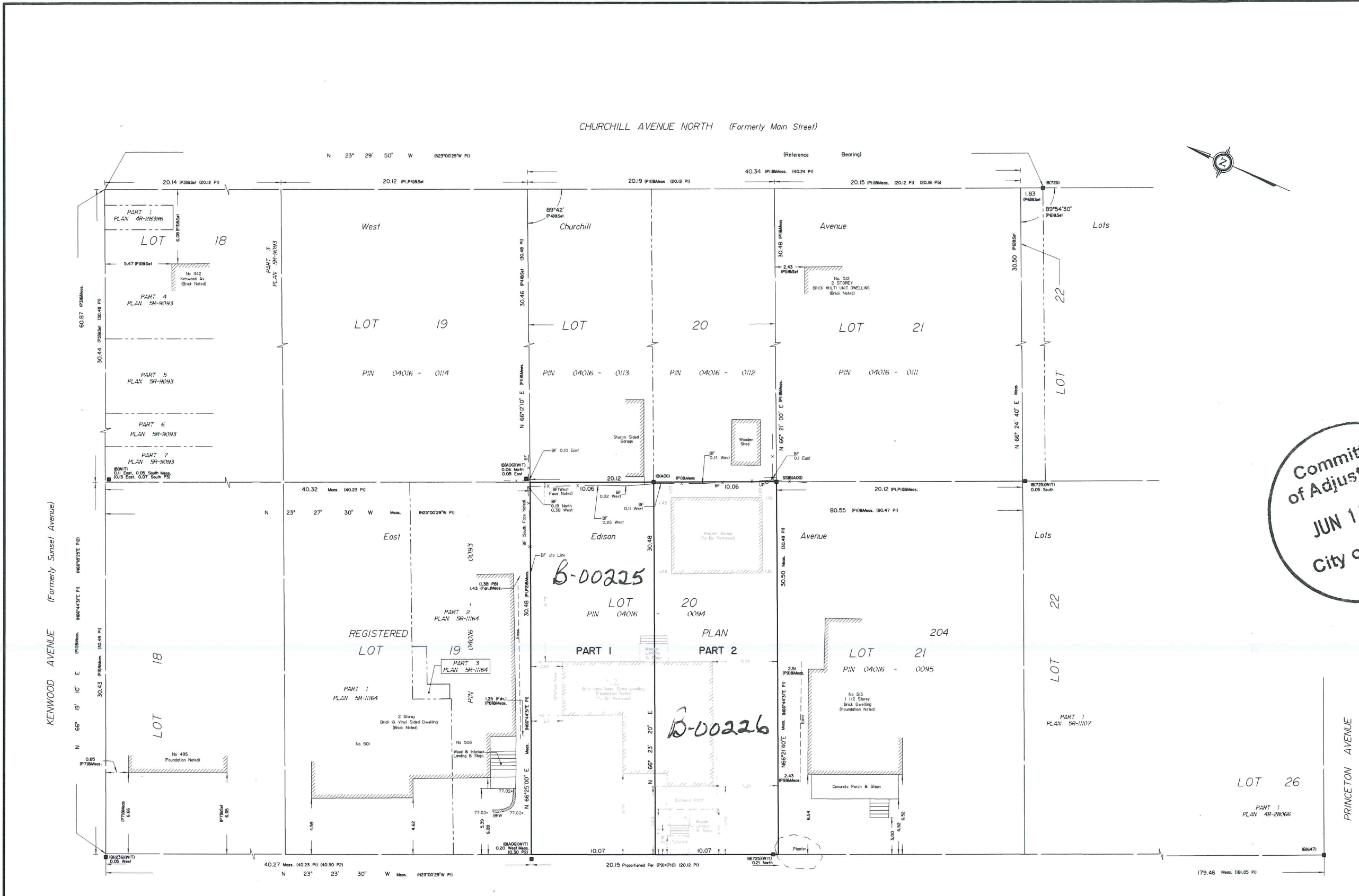
For comparison purposes, bearings shown on Plans P1 ... are astronomic bearings.

Coordinates are derived from Can-Net 2016 Real Time Network GPS observations referenced to Specified Control Points 01919680005 and 01919750705, MTM Zone 9 (76°30' West Longitude) NAD-83 (original).

Coordinate values are to urban accuracy in accordance with O. Reg. 216/10.  
 .01919680005 Northing 5027191.26 Easting 361496.76  
 .01919750705 Northing 5016816.93 Easting 360806.84  
 .Point A Northing Easting  
 .Point B Northing Easting

Caution: Coordinates cannot, in themselves, be used to re-establish corners or boundaries shown on this plan.

**ANNIS, O'SULLIVAN, VOLLEBEK LTD.**  
14 Concourse Gate, Suite 500  
Nepean, Ont. K2E 7S6  
Phone: (613) 727-0850 / Fax: (613) 727-1079  
Email: [info@annisov.com](mailto:info@annisov.com)  
Ontario Land Surveyors (see reg. 1886-18 Times L1 20 PL 204 2 02)



CHURCHILL AVENUE NORTH (Formerly Main Street)  
Reference Bearing  
N 23° 29' 50" W (N23°00'29"W PI)

EDISON AVENUE (Formerly Edison Street)  
PIN 04016 - 0056