

Committee  
of Adjustment  
JUN 07 2018  
City of Ottawa

I REQUIRE THIS PLAN TO BE DEPOSITED UNDER THE LAND TITLES ACT.  
DATE: \_\_\_\_\_

REPRESENTATIVE FOR  
ONTARIO LAND SURVEYOR

REPRESENTATIVE FOR  
LAND REGISTRAR FOR THE LAND TITLES DIVISION OF OTTAWA-CARLETON NO. 4.

SCHEDULE				
AREA (Sq.m.)	PART	LOT	CONCESSION	PIN
570.6	1			
566.4	2	PART OF 6	3 (OTTAWA FRONT)	ALL OF 04405-0240

**DRAFT PLAN OF SURVEY OF**

**PART OF LOT 6  
CONCESSION 3 (OTTAWA FRONT)  
GEOGRAPHIC TOWNSHIP OF GLOUCESTER  
CITY OF OTTAWA**  
Surveyed by Annis, O'Sullivan, Vollebakk Ltd.



**Metric**  
DISTANCES AND COORDINATES SHOWN ON THIS PLAN ARE IN METRES AND CAN BE CONVERTED TO FEET BY DIVIDING BY 0.3048.

**Surveyor's Certificate**

- I CERTIFY THAT:
- This survey and plan are correct and in accordance with the Surveys Act, the Surveyors Act and the Land Titles Act and the regulations made under them.
  - The survey was completed on the \_\_\_\_\_ day of \_\_\_\_\_ 2018.

Date \_\_\_\_\_  
V. Andrew Shelp  
Ontario Land Surveyor

**Notes & Legend**

- |       |         |                                   |
|-------|---------|-----------------------------------|
| —○—   | Denotes | Survey Monument Planted           |
| —■—   |         | Survey Monument Found             |
| SIB   |         | Standard Iron Bar                 |
| SSIB  |         | Short Standard Iron Bar           |
| IB    |         | Iron Bar                          |
| Meas. |         | Measured                          |
| (WIT) |         | Witness                           |
| (AOG) |         | Annis, O'Sullivan, Vollebakk Ltd. |
| (P1)  |         | Plan 4R-21990                     |
| (P2)  |         | Plan 4R-19052                     |
| (P3)  |         | Expropriation plan OC339349       |
| (P4)  |         | Registered plan 743               |
| BF    |         | Board Fence                       |
| CLF   |         | Chain Link Fence                  |
| OHW   |         | Overhead Wires                    |
| MP    |         | Metal Post                        |
| ∅     |         | Diameter                          |
| C/A   |         | Centreline                        |
| ⊙     |         | Coniferous Tree                   |
| ⊙     |         | Deciduous Tree                    |

Distances shown on this plan are ground distances and can be converted to grid distances by multiplying by the combined scale factor of 0.99996.

Bearings are grid bearings, derived from the northerly limit of Part 2 Expropriation plan OC339349 shown to be N60°29'10"E on Plan 4R-21990 and are referred to the Central Meridian of MTM Zone 9 (76°30' West Longitude) NAD-83 (original).

Coordinates are derived from Can-Net 2016 Real Time Network GPS observations referenced to Specified Control Points 01919680184 and 019198434761, MTM Zone 9 (76°30' West Longitude) NAD-83 (original).

Coordinate values are to urban accuracy in accordance with O. Reg. 216/010.

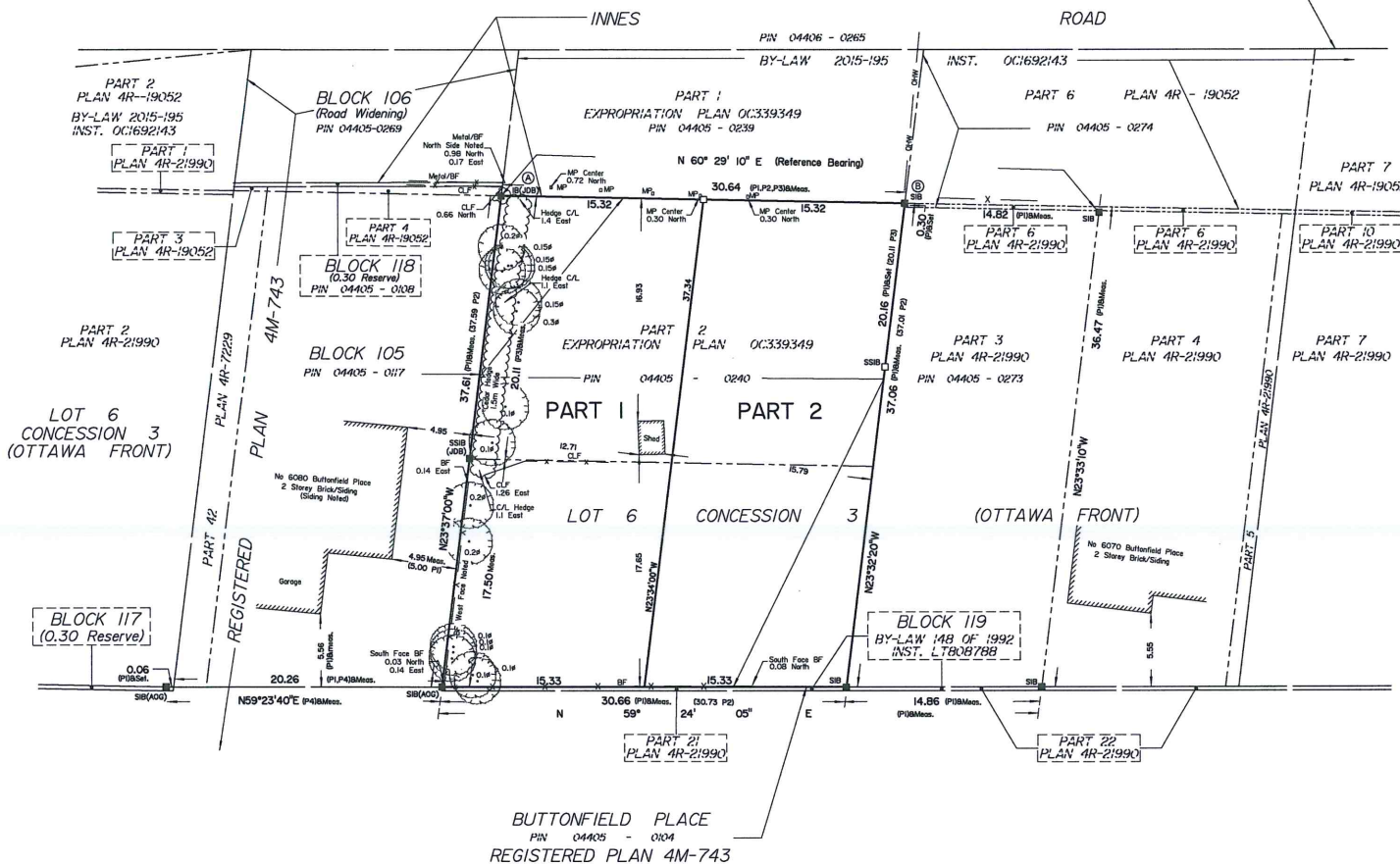
• 01919680184	Northing	5040610.16	Eastings	384736.56
• 019198434761	Northing	5036178.12	Eastings	372436.11
• Point A	Northing	5034367.98	Eastings	380668.88
• Point B	Northing	5034403.06	Eastings	380695.47

Caution: Coordinates cannot, in themselves, be used to re-establish corners or boundaries shown on this plan.

**ANNIS, O'SULLIVAN, VOLLEBAKK LTD.**  
14 Concourse Gate, Suite 500  
Nepean, Ont. K2E 7S6  
Phone: (613) 727-0850 / Fax: (613) 727-1079  
Email: [Nepean@annis.com](mailto:Nepean@annis.com)

Ontario  
Land Surveyors (Job No. 18480-18, G. Cont. P.L.S. 6, Can. 3 of R. 01)

ROAD ALLOWANCE BETWEEN CONCESSION 2 AND 3 (OTTAWA FRONT) (GLOUCESTER)  
(Formerly Known as Regional Road No. 30)



BUTTONFIELD PLACE  
PIN 04405 - 0104  
REGISTERED PLAN 4M-743