

METRIC
DISTANCES AND COORDINATES SHOWN ON THIS PLAN ARE IN METRES
AND CAN BE CONVERTED TO FEET BY DIVIDING BY 0.3048

PLAN PREPARED FOR COMMITTEE
OF ADJUSTMENT PURPOSES
AUGUST 3, 2017.

SCHEDULE						
AREA (SQ.M.)	LOT WIDTH	PART	LOT	PLAN	PIN	
227.2	7.65	1	ALL OF 16	114	ALL OF 03971-0280	
227.2	7.65	2				

NOTE: LOT WIDTHS AS SHOWN HAVE BEEN CALCULATED
PER CITY OF OTTAWA ZONING BYLAW 2008-250
CONSOLIDATION (PART 1, DEFINITIONS-SEC. 54).

I REQUIRE THIS PLAN TO BE
DEPOSITED UNDER THE
LAND TITLES ACT.

PLAN 4R--
RECEIVED AND DEPOSITED

DATE -----

DATE -----

REPRESENTATIVE FOR
LAND REGISTRAR FOR THE
LAND TITLES DIVISION OF
OTTAWA - CARLETON (N° 4)

PLAN OF SURVEY OF
LOT 16
REGISTERED PLAN 114
CITY OF OTTAWA



FAIRHALL, MOFFATT & WOODLAND LIMITED
ONTARIO LAND SURVEYORS

NOTES

- BEARINGS ARE GRID, DERIVED FROM THE WESTERLY LIMIT OF ROOSEVELT AVENUE (FORMERLY VICTORIA AVENUE) AS SHOWN ON PLAN BY ANNIS, O'SULLIVAN, VOLLEBEKK LTD., DATED MARCH 29, 2016, REF. 16467-16, HAVING A BEARING OF N 23°38'10" W AND ARE REFERRED TO THE CENTRAL MERIDIAN, 76°30' W LONGITUDE, NAD83 (ORIGINAL).
- DISTANCES ARE GROUND AND CAN BE CONVERTED TO GRID BY MULTIPLYING BY THE COMBINED SCALE FACTOR 0.999934

LEGEND

- - SURVEY MONUMENT SET
- - SURVEY MONUMENT FOUND
- SS(B)(SU)(WT) - SHORT STANDARD IRON BAR
- IB - IRON BAR
- (P) - REGISTERED PLAN 114
- (P1) - REGISTERED PLAN 270
- (M) - MEASURED
- (S) - SET
- (857) - FAIRHALL, MOFFATT & WOODLAND LTD., O.L.S., REF. 13-114 NP
- (AOG) - ANNIS, O'SULLIVAN, VOLLEBEKK LTD., O.L.S., REF. 16467-16
- (SU) - SOURCE UNKNOWN
- (WIT) - WITNESS
- PIN - PROPERTY IDENTIFIER NUMBER
- OHW - OVERHEAD UTILITY WIRES
- BF - BOARD FENCE
- CLF - CHAIN LINK FENCE
- RW - RETAINING WALL
- UP - UTILITY POLE
- - OVERHEAD UTILITY WIRES
- X- - FENCE

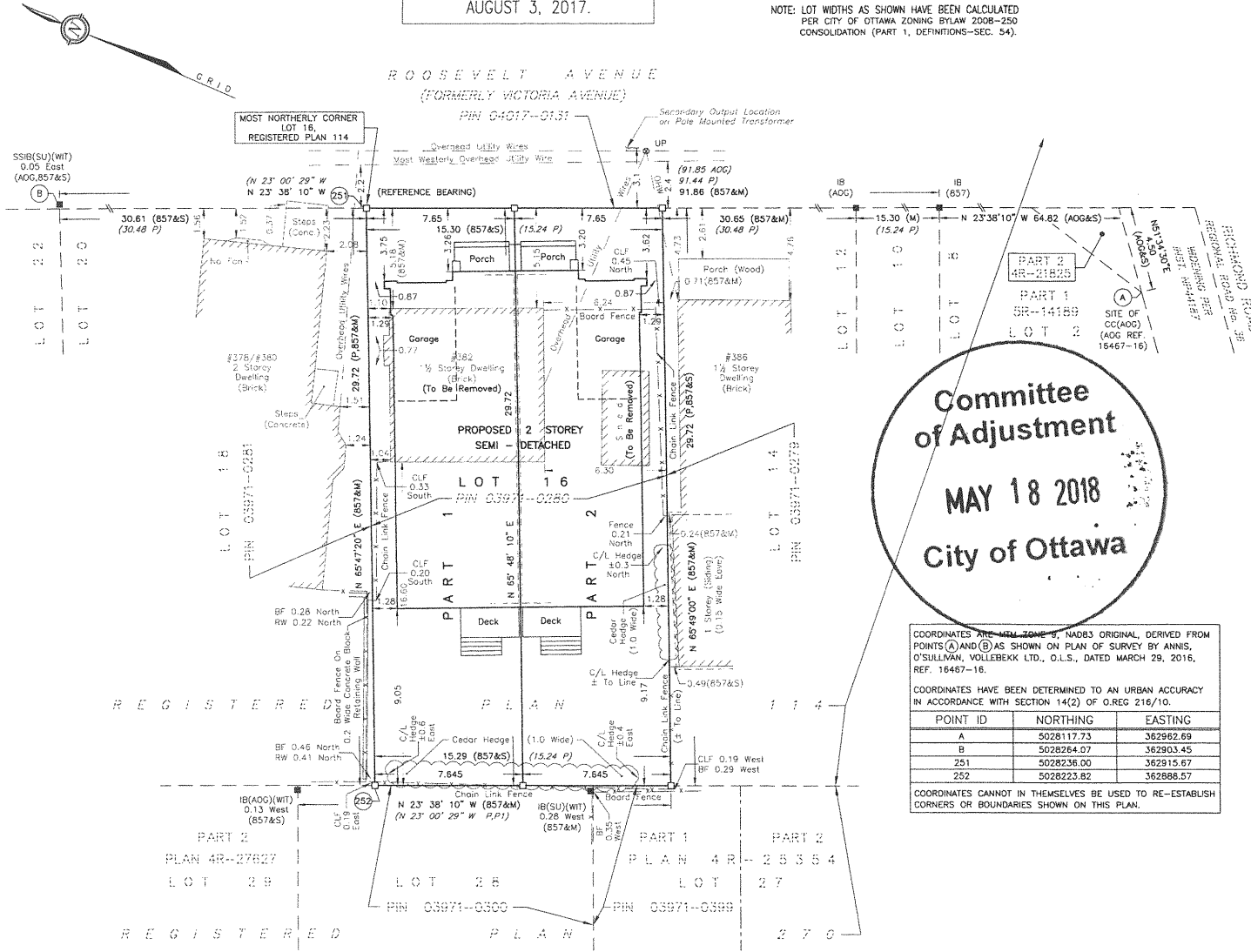
SURVEYOR'S CERTIFICATE

- I CERTIFY THAT:
- THIS SURVEY AND PLAN ARE CORRECT AND IN ACCORDANCE WITH THE SURVEYS ACT, THE SURVEYORS ACT, THE LAND TITLES ACT AND THE REGULATIONS MADE UNDER THEM.
 - THE SURVEY WAS COMPLETED ON

DATE -----

JOHN H. GUTRI
ONTARIO LAND SURVEYOR

Fairhall Moffatt & Woodland LIMITED ONTARIO LAND SURVEYORS Surveying and Land Information Services 100-600 TERRY FOX DRIVE, KANATA, ONTARIO K2L 4K6 TEL: (613) 591-2550 FAX: (613) 561-1456 www.fmw.on.ca		JOB No. X 21900
		E 362911, N 5028225
		REFERENCE No. 13(b) - 114 NP
		S:\085\W21900\DWG\ DRP219X.DWG (brd)



Committee
of Adjustment
MAY 18 2018
City of Ottawa

COORDINATES ARE NAD 83, NAD83 ORIGINAL, DERIVED FROM POINTS (A) AND (B) AS SHOWN ON PLAN OF SURVEY BY ANNIS, O'SULLIVAN, VOLLEBEKK LTD., O.L.S., DATED MARCH 29, 2016, REF. 16467-16.

COORDINATES HAVE BEEN DETERMINED TO AN URBAN ACCURACY IN ACCORDANCE WITH SECTION 14(2) OF O.REG. 216/10.

POINT ID	NORTHING	EASTING
A	5028117.73	362962.69
B	5028264.07	362903.45
251	5028236.00	362915.67
252	5028223.82	362888.57

COORDINATES CANNOT IN THEMSELVES BE USED TO RE-ESTABLISH CORNERS OR BOUNDARIES SHOWN ON THIS PLAN.