

PLAN 4R
 RECORD AND EXHIBIT
 DATE: _____
 DRAWN BY: _____
 CHECKED BY: _____
 DATE: _____

SCHEDULE		CONVEYANCE		P.W.	
DATE	LOT	DATE	CONVEYANCE	DATE	P.W.

PLAN OF SURVEY OF
PART OF LOT 20
CONCESSION 9
 CITY OF OTTAWA (C/OO00061)
 CITY OF OTTAWA

GENERAL NOTES:
 1. THIS PLAN IS A PART OF THE SURVEY OF LOT 20, CONCESSION 9, CITY OF OTTAWA, C/OO00061.
 2. THE SURVEY IS SUBJECT TO THE CITY OF OTTAWA ZONING BY-LAW AND THE REGULATIONS.
 3. THE SURVEY IS SUBJECT TO THE CITY OF OTTAWA DEVELOPMENT ACT AND THE REGULATIONS.

LEGEND:
 PART 1
 PART 2
 PART 3
 PART 4
 PART 5
 PART 6
 PART 7
 PART 8
 PART 9
 PART 10
 PART 11
 PART 12
 PART 13
 PART 14
 PART 15
 PART 16
 PART 17
 PART 18
 PART 19
 PART 20

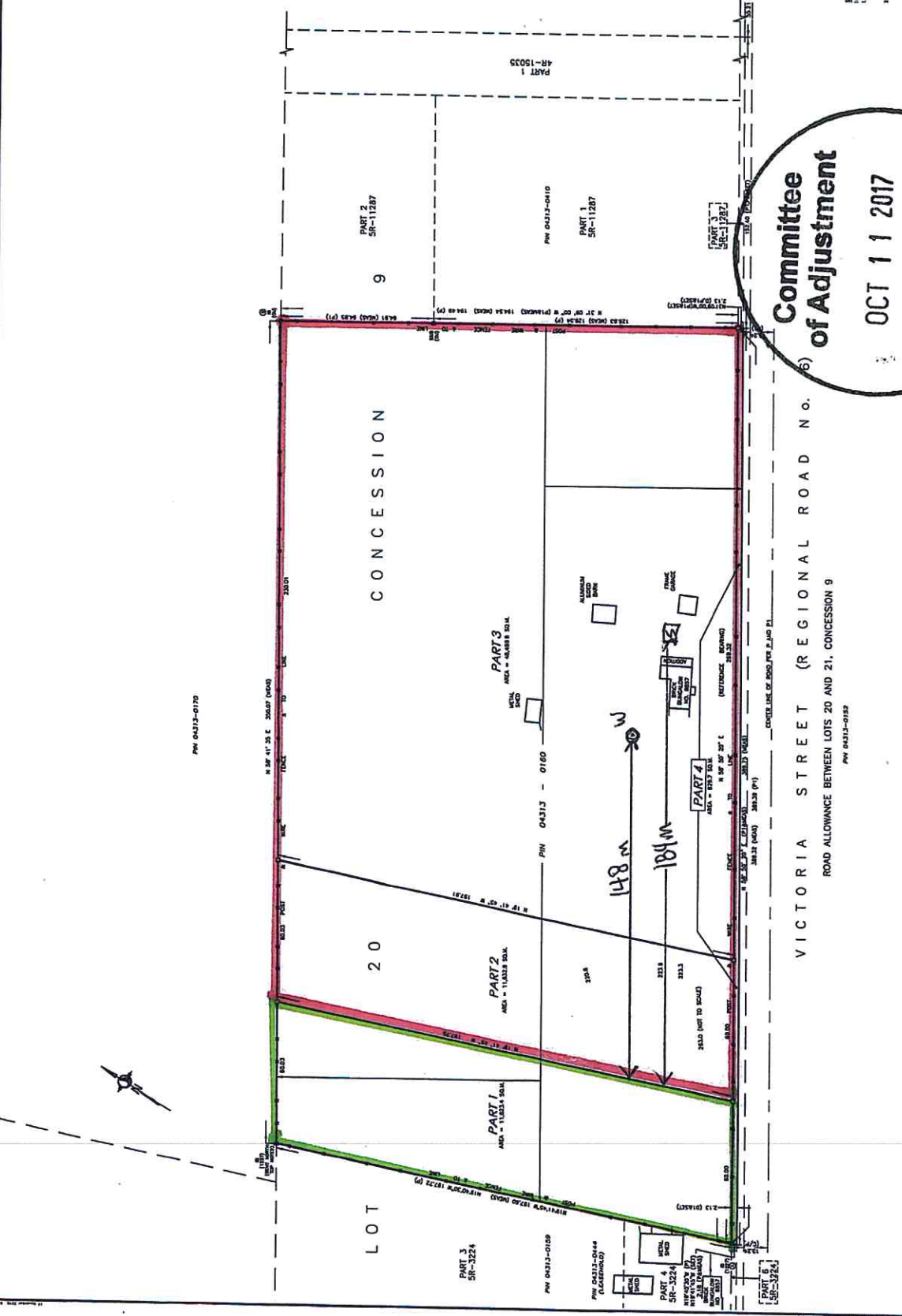
CONVEYANCE:
 PART 1
 PART 2
 PART 3
 PART 4
 PART 5
 PART 6
 PART 7
 PART 8
 PART 9
 PART 10
 PART 11
 PART 12
 PART 13
 PART 14
 PART 15
 PART 16
 PART 17
 PART 18
 PART 19
 PART 20

CONVEYANCE:
 PART 1
 PART 2
 PART 3
 PART 4
 PART 5
 PART 6
 PART 7
 PART 8
 PART 9
 PART 10
 PART 11
 PART 12
 PART 13
 PART 14
 PART 15
 PART 16
 PART 17
 PART 18
 PART 19
 PART 20

CONVEYANCE:
 PART 1
 PART 2
 PART 3
 PART 4
 PART 5
 PART 6
 PART 7
 PART 8
 PART 9
 PART 10
 PART 11
 PART 12
 PART 13
 PART 14
 PART 15
 PART 16
 PART 17
 PART 18
 PART 19
 PART 20

CONVEYANCE:
 PART 1
 PART 2
 PART 3
 PART 4
 PART 5
 PART 6
 PART 7
 PART 8
 PART 9
 PART 10
 PART 11
 PART 12
 PART 13
 PART 14
 PART 15
 PART 16
 PART 17
 PART 18
 PART 19
 PART 20

CONVEYANCE:
 PART 1
 PART 2
 PART 3
 PART 4
 PART 5
 PART 6
 PART 7
 PART 8
 PART 9
 PART 10
 PART 11
 PART 12
 PART 13
 PART 14
 PART 15
 PART 16
 PART 17
 PART 18
 PART 19
 PART 20



COMMITTEE OF ADJUSTMENT
OCT 11 2017
CITY OF OTTAWA

VICTORIA STREET (REGIONAL ROAD NO. 6)
 ROAD ALLOWANCE BETWEEN LOTS 20 AND 21, CONCESSION 9

PLAN 4R-0155

DATE	LOT	CONVEYANCE	P.W.

STANTEC
 Stantec Geomatics Ltd.
 1000 SHEPPARD AVENUE EAST
 SUITE 1000
 SCARBOROUGH, ONTARIO M1S 1W7
 TEL: (416) 291-1234
 FAX: (416) 291-1235
 WWW.STANTEC.COM

PLAN (as recorded)

DATE: _____

DRAWN BY: _____

DATE: _____

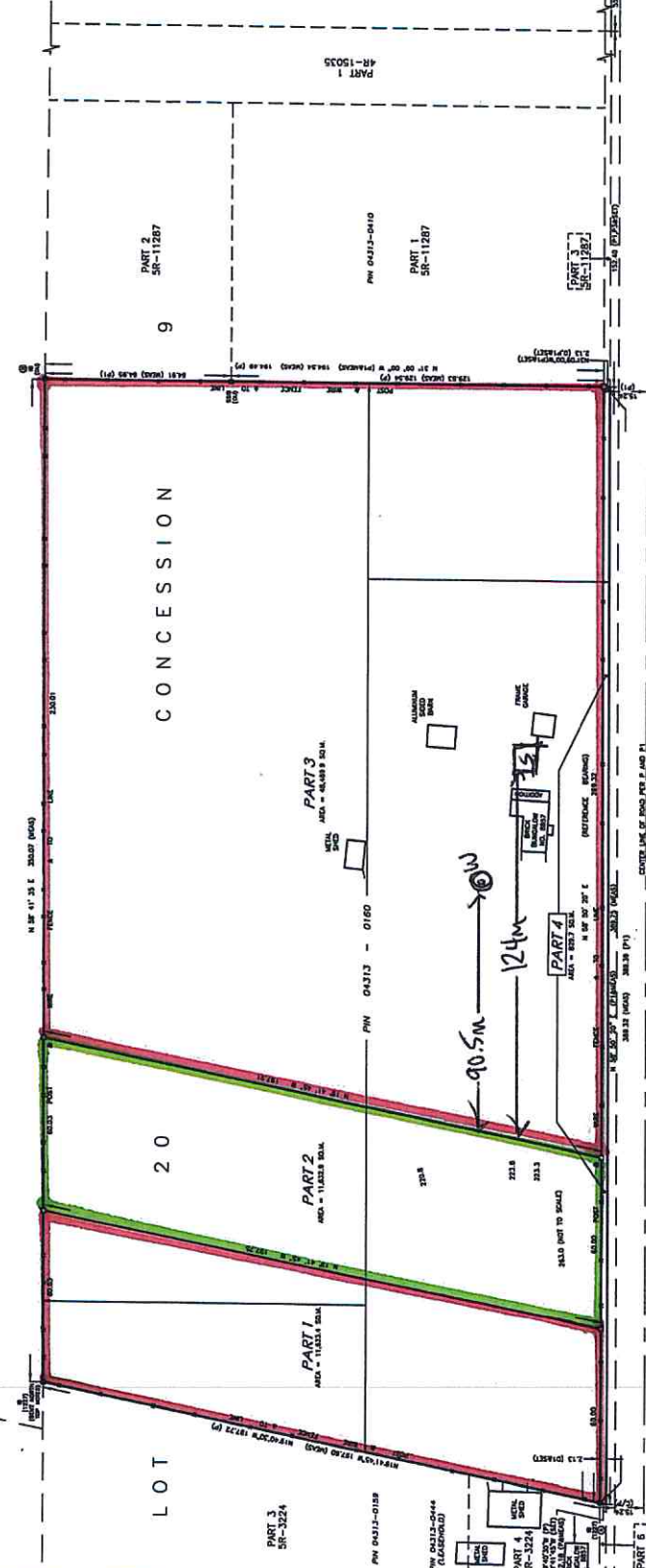
DATE: _____

DATE	DESCRIPTION	BY

**PLAN OF SURVEY OF
PART OF LOT 20
CONCESSION 9
(COORDINATE TOWNSHIP OF COGOCHEE)
CITY OF OTTAWA**

SCALE 1:2500

- REMARKS:**
- 1. THIS SURVEY AND PLAN ARE CORRECT AND IN ACCORDANCE WITH THE SURVEY ACT AND THE LAND SURVEY ACT AND REGULATIONS THEREUNDER.
 - 2. THE SURVEY IS COMPLETED ON THE DATE OF THIS PLAN.
- REVISIONS:**
- 1. _____
 - 2. _____
 - 3. _____
 - 4. _____
 - 5. _____
 - 6. _____
 - 7. _____
 - 8. _____
 - 9. _____
 - 10. _____



Committee of Adjustment
OCT 11 2017
City of Ottawa

VICTORIA STREET (REGIONAL ROAD NO. 9)
ROAD ALLOWANCE BETWEEN LOTS 20 AND 21, CONCESSION 9
PIN 04313-0189

NO.	DESCRIPTION	DATE

Stantec

Stantec Consulting Ltd.
1500 O'CONNOR STREET
OTTAWA, ONTARIO
K1G 3M5
CANADA
TEL: (613) 973-7800
WWW.STANTEC.COM