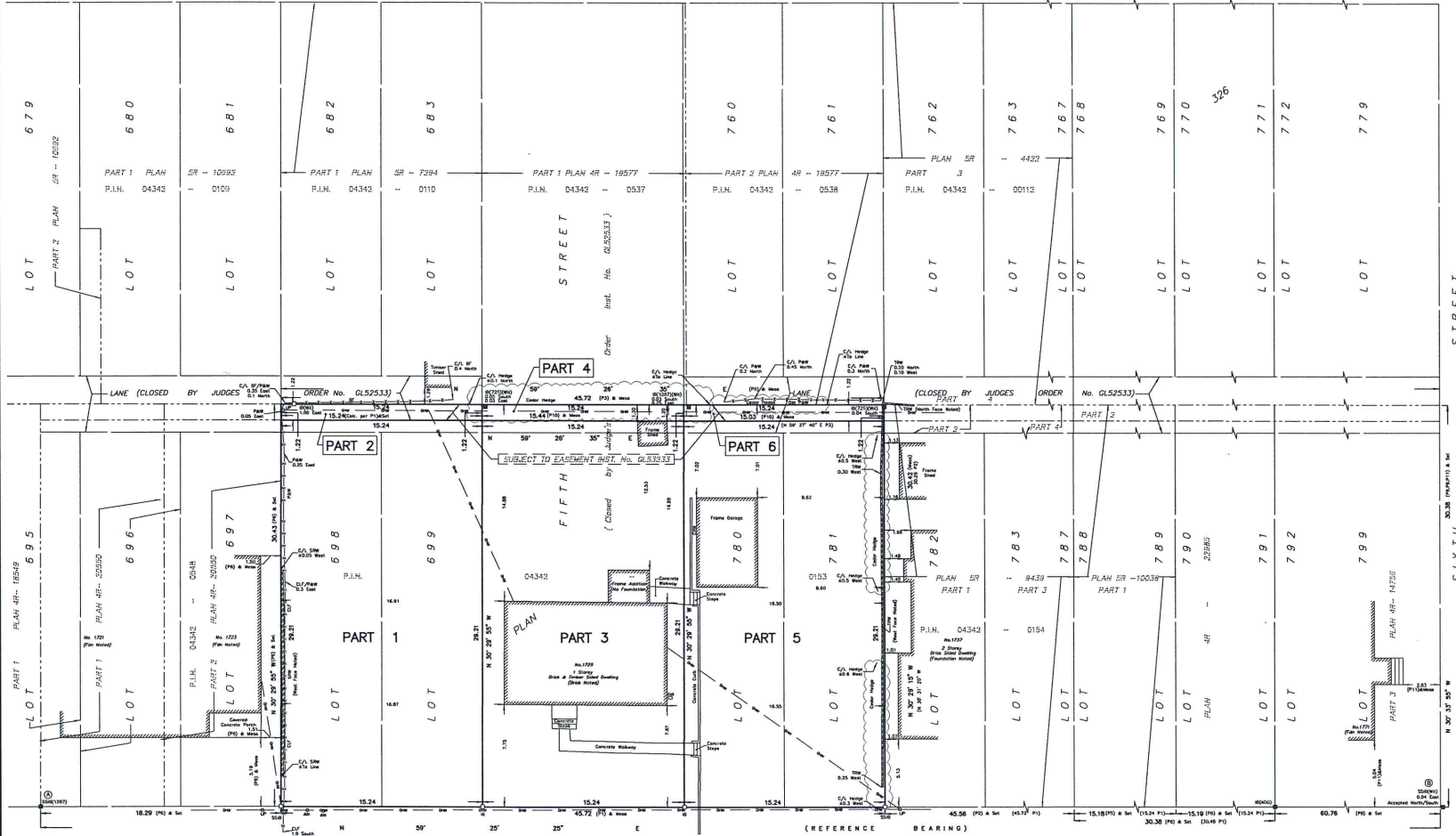


KINGSDALE AVENUE (Formerly Central Boulevard)

QUEENSDALE AVENUE (Formerly Laurence Avenue)



I REQUIRE THE PLAN TO BE DEPOSITED UNDER THE LAND TITLES ACT. DATE: ... PLAN 4R- RECEIVED AND DEPOSITED DATE: ...

SCHEDULE table with columns: PART, LOT, PLAN, AREA (Sq. m.).

DRAFT PLAN OF EASEMENT FOR LOTS 698, 699, 780 & 781 AND PART OF LANE AND PART OF FIFTH STREET (As Closed by Judge's Order Inst. No. GL52533) REGISTERED PLAN 326 CITY OF OTTAWA

Scale 1: 150

Metric Note Distances and coordinates on this plan are in metres and can be converted to feet by dividing by 0.3048.

Distance Note Distances shown on this plan are ground distances and can be converted to grid distances by multiplying by the combined scale factor of 0.99995.

Bearing Note Bearings are MTM and grid, derived from the Smart-Net Real Time Network. GPS observations on reference points A and B, shown herein, having a bearing of N 5° 23' 23" E and are referred to the Central Meridian of MTM Zone 9 (78° 50' West Longitude) Mad-83 (Original).

Table with columns: POINT ID, NORTHING, EASTING. Lists coordinates for points P1 through P13.

- Notes & Legend: Symbols for Denises, Survey Monument, Standard Iron Bar, Short Standard Iron Bar, Witness, Measured, Right-handed Plan 326, etc.

Surveyor's Certificate I certify that: 1. The survey and plan are correct and in accordance with the Survey Act, the Surveyors Act and the Land Titles Act and the Regulations made under them. 2. The survey was completed on the 25th day of March, 2018.

Date: ... James Leslie Ontario Land Surveyor

FARLEY, SMITH & DENIS SURVEYING LTD.

WARNING: NO PART OF THIS COPY, REPRODUCE, DISTRIBUTE OR ALTER THE PLAN IN ANY MANNER WITHOUT THE WRITTEN PERMISSION OF FARLEY, SMITH & DENIS SURVEYING LTD. 370 COLLENDARE ROAD, OTTAWA, ONTARIO K2E 3J5 TEL: (613) 727-8226 FAX: (613) 727-1862