

PRINCETON AVENUE (Formerly Princess Avenue)

PIN 04000 - 0045

I REQUIRE THIS PLAN TO BE DEPOSITED UNDER THE LAND TITLES ACT.
DATE: _____

PLAN 4R-
RECEIVED AND DEPOSITED
DATE: _____

| SCHEDULE | | | | |
|-------------|------|-------------------|------|-------------------|
| AREA (Sq.m) | PART | LOT | PLAN | PIN |
| 287.76 | 1 | PART OF 713 & 714 | 360 | ALL OF 04010-0123 |
| 209.76 | 2 | PART OF 713 | | |

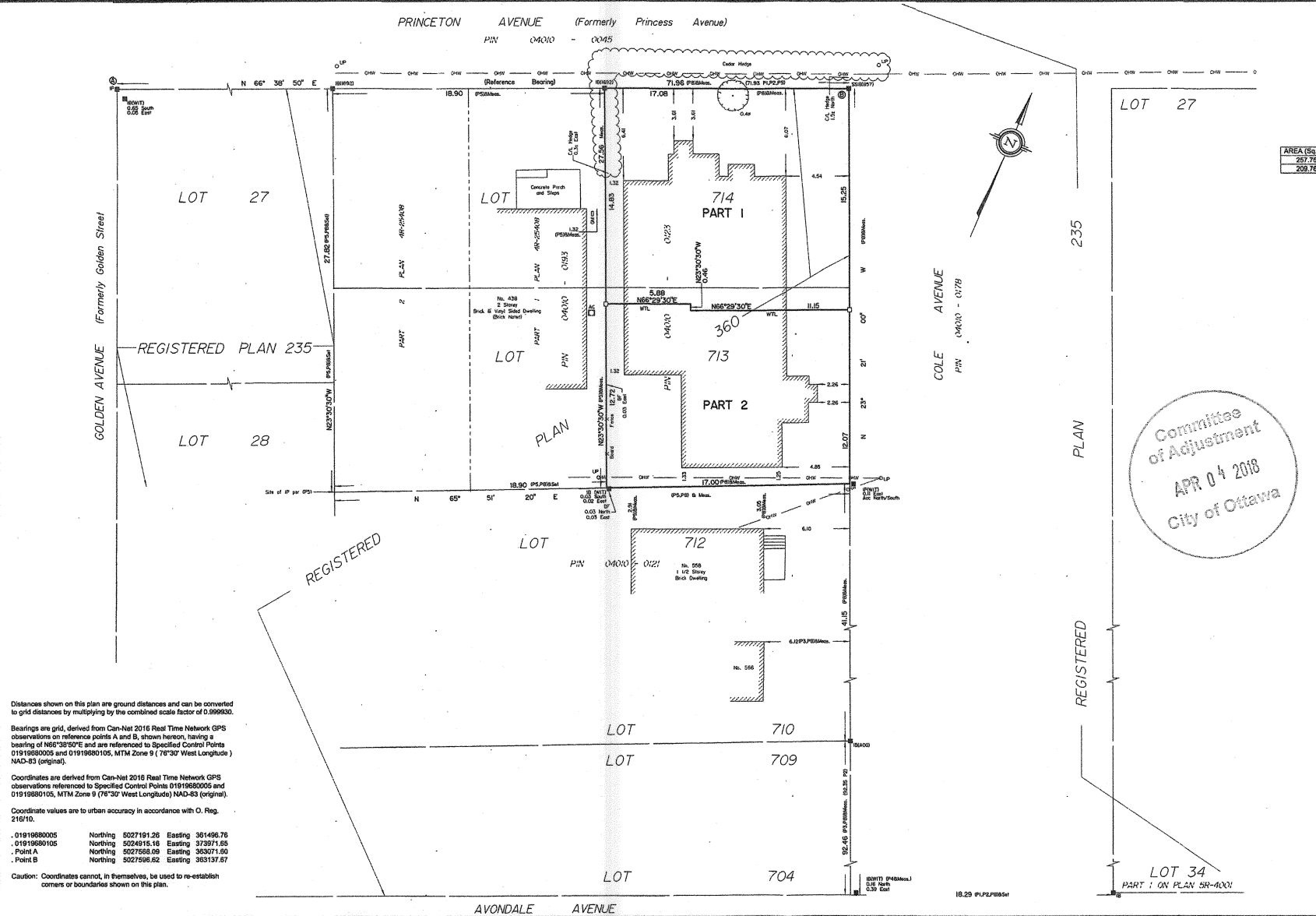
DRAFT PLAN OF SURVEY OF
PART OF LOTS 713 & 714
REGISTERED PLAN 360
CITY OF OTTAWA
Surveyed by Annis, O'Sullivan, Vollebakk Ltd.

Scale 1:150
Metric
DISTANCES SHOWN ON THIS PLAN ARE IN METRES AND CAN BE CONVERTED TO FEET BY DIVIDING BY 0.3048

Surveyor's Certificate
I CERTIFY THAT:
1. This survey and plan are correct and in accordance with the Survey Act, the Surveyors Act and the Land Titles Act and the regulations made under them.
2. This survey was completed on the 17th day of November, 2017.
Date: _____
V. Andrew Sheph
Ontario Land Surveyor

- Notes & Legend**
- Survey Monument Planted
 - Survey Monument Found
 - S— Standard Iron Bar
 - SSB— Short Standard Iron Bar
 - IB— Iron Bar
 - (WIT)— Witness
 - Meas.— Measured
 - (AOG)— Annis, O'Sullivan, Vollebakk Ltd.
 - (P1)— Registered Plan 235
 - (P2)— Registered Plan 360
 - (P3)— (AOG) Plan dated December 12, 1998
 - (P4)— (AOG) Plan dated November 29, 2000
 - (P5)— (847) Plan dated June 28, 2011
 - (P6)— (847) Plan dated April 28, 1981
 - (P7)— (847) Plan dated February 4, 1985
 - (P8)— (AOG) Plan dated June 2, 2017
 - BF— Board Fence
 - oP— Utility Pole
 - AC— Air Conditioner
 - C/L— Centreline
 - OW— Overhead Wires
 - Acc— Accepted
 - WTL— Centerline of Wall ± to Line

© Annis, O'Sullivan, Vollebakk Ltd. 2017. THIS PLAN IS PROTECTED BY COPYRIGHT.
ANNIS, O'SULLIVAN, VOLLEBEKK LTD.
14 Concourse Centre, Suite 800
Highway 404, K2E 2Z6
Ottawa, Ontario
Phone: (613) 727-2850 / Fax: (613) 727-1079
www.anniso.com



Distances shown on this plan are ground distances and can be converted to grid distances by multiplying by the combined scale factor of 0.99950.
Bearings are grid, derived from Can-Nat 2016 Real Time Network GPS observations on reference points A and B, shown hereon, having a bearing of N66°38'50"E and are referenced to Specified Control Points 01919880005 and 01919880105, MTM Zone 9 (78°30' West Longitude) NAD-83 (original).
Coordinates are derived from Can-Nat 2016 Real Time Network GPS observations referenced to Specified Control Points 01919880005 and 01919880105, MTM Zone 9 (78°30' West Longitude) NAD-83 (original).
Coordinate values are to urban accuracy in accordance with O. Reg. 216/10.
• 01919880005 Northing 5027191.26 Easting 361496.76
• 01919880105 Northing 5024915.16 Easting 373971.65
• Point A Northing 50271568.08 Easting 363071.50
• Point B Northing 5027596.62 Easting 363137.67
Caution: Coordinates cannot, in themselves, be used to re-establish corners or boundaries shown on this plan.