

Distances shown on this plan are ground distances and can be converted to grid distances by multiplying by the combined scale factor of 0.999945.

Bearings are grid, derived from Can-Net 2016 Real Time Network GPS observations on reference points A and B, shown hereon, having a bearing of N59°27'30"E and are referenced to Specified Control Points 01919760735 and 01919871649, MTM Zone 9 (75°30' West Longitude) NAD-83 (original).

For bearing comparisons, a rotation of 0°38'30" counter-clockwise was applied to bearings on plan.

Coordinates are derived from Can-Net 2016 Real Time Network GPS observations referenced to Specified Control Points 01919760735 and 01919871649, MTM Zone 9 (75°30' West Longitude) NAD-83 (original).

Coordinate values are to urban accuracy in accordance with O. Reg. 216/10.

.01919760735    Northing 6026003.34    Easting 376968.72  
 .01919871649    Northing 5007189.87    Easting 372435.05  
 Point A        Northing 5023892.24    Easting 374119.32  
 Point B        Northing 5023940.27    Easting 374196.72

Caution: Coordinates cannot, in themselves, be used to re-establish corners or boundaries shown on this plan.



QUEENSDALE AVENUE (Formerly Laurence Avenue) (BY-LAW NO. 58727)  
 (WIDENED BY INST. 52122)  
 REGISTERED PLAN 326  
 PIN 04342 - 0243

I REQUIRE THIS PLAN TO BE DEPOSITED UNDER THE LAND TITLES ACT.  
 DATE: \_\_\_\_\_  
 RICHARD R. GAUTHIER  
 ONTARIO LAND SURVEYOR  
 REPRESENTATIVE FOR THE LAND TITLES DIVISION OF OTTAWA-CARLETON NO. 4.

SCHEDULE			
AREA (Sq.m.)	PART	LOT	PIN
523	1	ALL OF 9	823
523	2		ALL OF 04342-0234

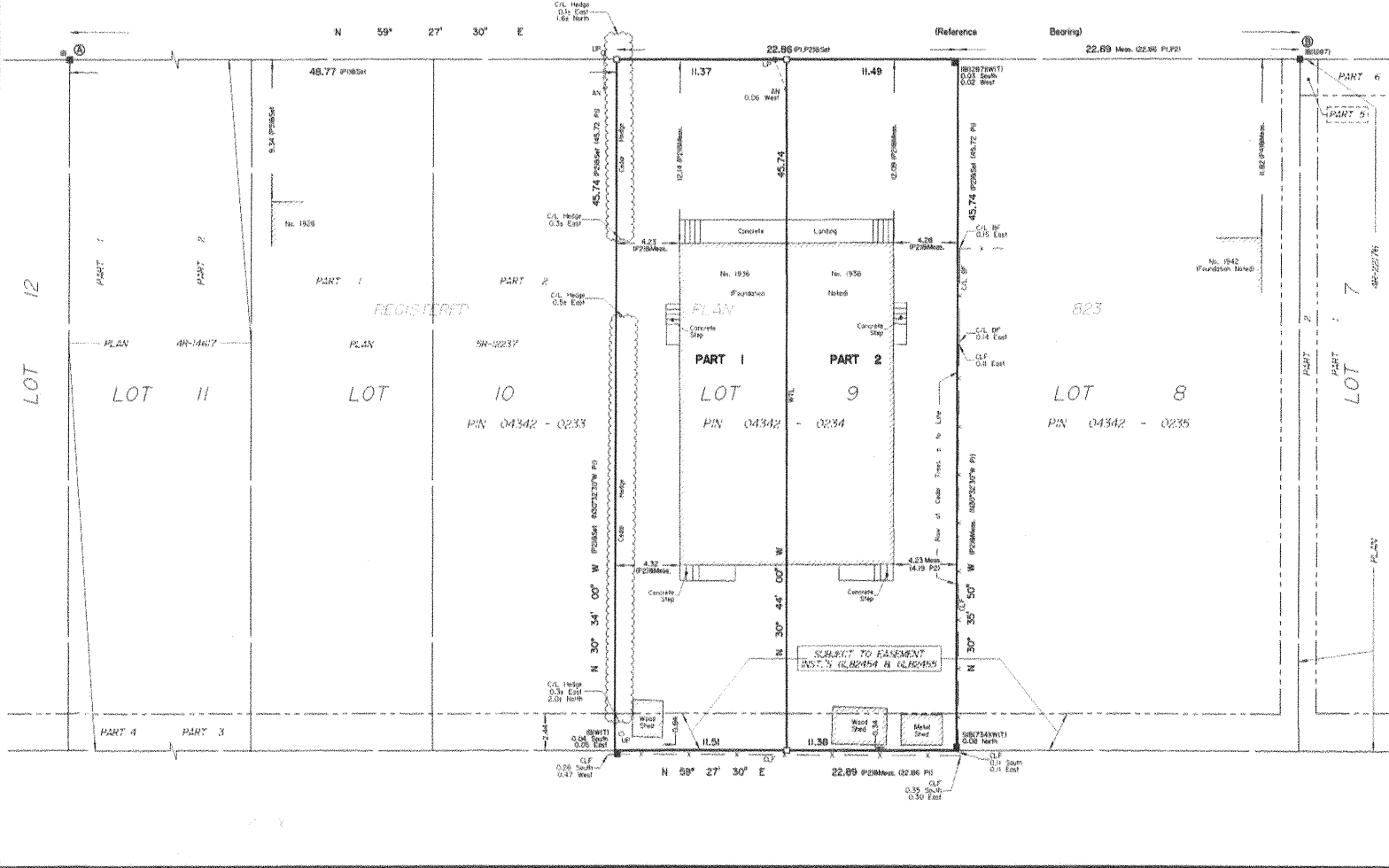
Parts 1 & 2 are Subject to Easement Inst.'s GL82454 & GL82455.

PLAN OF SURVEY OF  
**LOT 9**  
**REGISTERED PLAN 823**  
**CITY OF OTTAWA**  
 Surveyed by Annis, O'Sullivan, Vollebek Ltd.

Scale 1 : 200  
 0 0.5 1 1.5 2 2.5 3 3.5 4 4.5 5 Metres  
 Metric  
 DISTANCES AND COORDINATES SHOWN ON THIS PLAN ARE IN METRES AND CAN BE CONVERTED TO FEET BY DIVIDING BY 0.3048.

Surveyor's Certificate  
 I CERTIFY THAT:  
 1. This survey and plan are correct and in accordance with the Survey Act, the Surveyors Act and the Land Titles Act and the regulations made under them.  
 2. The survey was completed on the 14th day of March, 2018.  
 Date: March 23rd, 2018  
 Richard R. Gauthier  
 Ontario Land Surveyor

- Notes & Legend
- Dotted Survey Monument Planted
  - Survey Monument Found
  - SIB Standard Iron Bar
  - SIB Short Standard Iron Bar
  - IS Iron Bar
  - (WT) Witness
  - (AOC) Annis, O'Sullivan, Vollebek Ltd.
  - Meas. Measured
  - (P1) Registered Plan 823
  - (P2) (1287) Plan September 1, 1992
  - (P3) Plan 4R-14817
  - (P4) (1287) Plan February 8, 1992
  - WTL Centreline of Wall to Line
  - CL Centreline
  - BF Board Fence
  - CLF Chain Link Fence
  - UP Utility Pole
  - AN Anchor



ANNIS, O'SULLIVAN, VOLLEBEK LTD.  
 14 Concourse Drive, Suite 500  
 Niagara, Ont. N2E 7S6  
 Phone: (913) 727-0850 / Fax: (913) 727-1079  
 Email: Annis@annisco.com