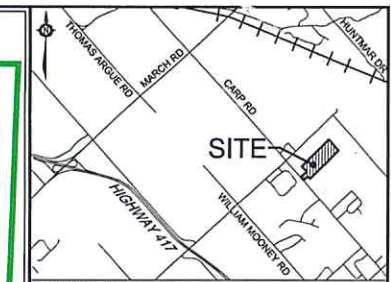
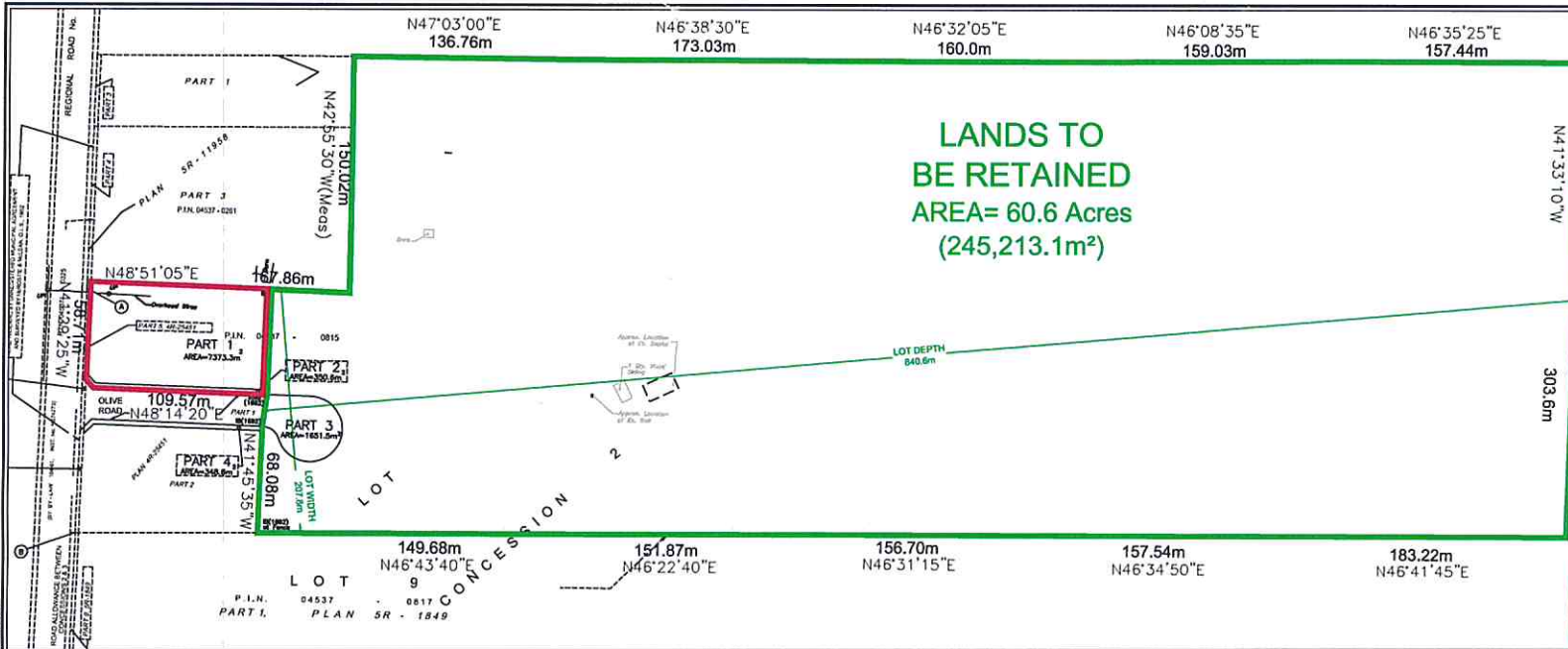


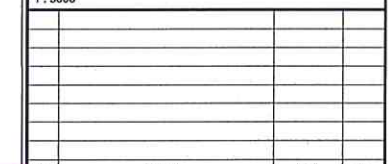
M:\2010\110174\CAD\Planning\Severance\2017\110174-2017-SEV.dwg, SEV1, Nov 20, 2017 - 11:37am, wsl055



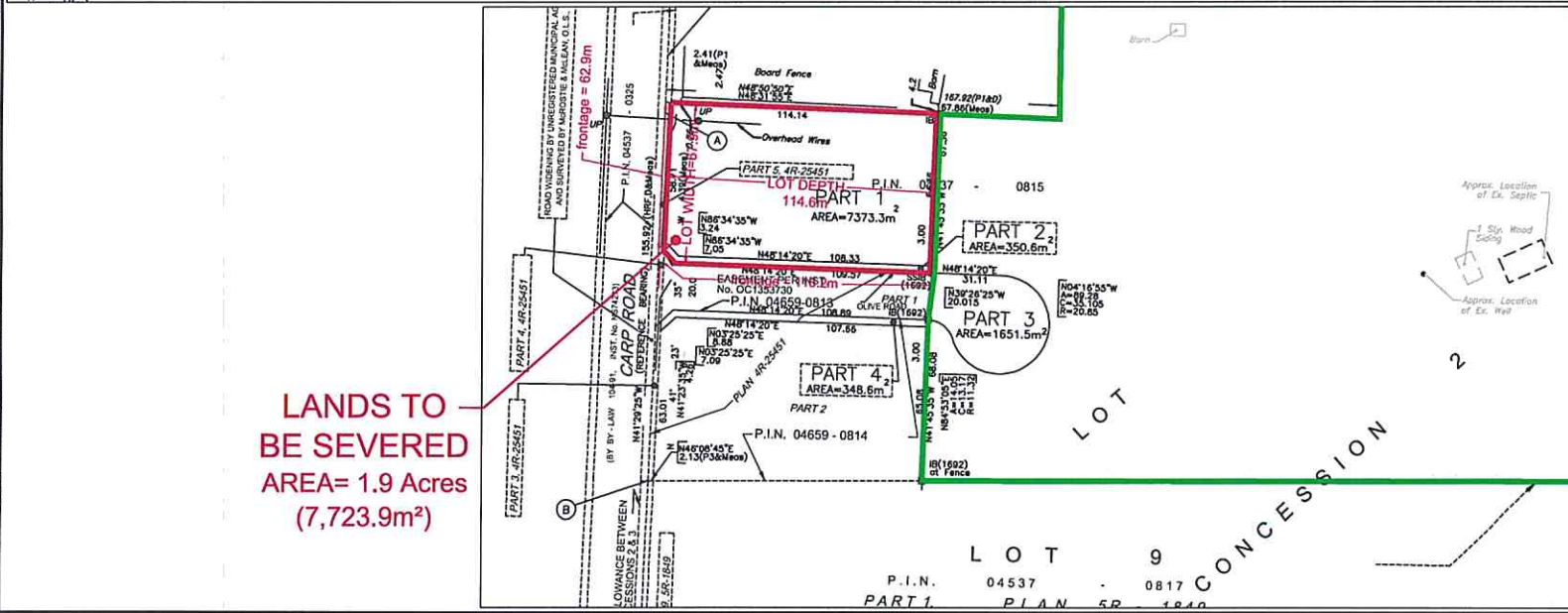
SEVERANCE APPLICATION
 2914 CARP ROAD

COMMITTEE OF ADJUSTMENT
 REVISED
 NOV 21 2017
 CITY OF OTTAWA

PART LOT 10,
 CONCESSION 2
 PART 1 ON PLAN 4R-25451
 GEOGRAPHIC TOWNSHIP OF HUNTLEY,
 NOW CITY OF OTTAWA



NO.	REVISION	DATE	BY



NOVATECH
 Engineers, Planners & Landscape Architects
 Suite 200, 240 Michael Cowpland Drive
 Ottawa, Ontario, Canada K2M 1P6
 Telephone: (613) 258-9643
 Facsimile: (613) 258-9642
 Website: www.novatech-eng.com

ISSUED: **OCTOBER, 2017**
 PROJECT No.: **110174**
 DRAWING No.: **110174-SEV**

I REQUIRE THIS PLAN TO BE DEPOSITED UNDER THE LAND TITLES ACT.

DATE MAY 09, 2014

Ronald A. Denis
RONALD A. DENIS
ONTARIO LAND SURVEYOR

PLAN 4R-27903

RECEIVED AND DEPOSITED

DATE May 9, 2014

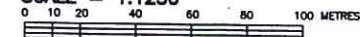
Amie M. McNeil
Representative for
LAND REGISTRAR FOR THE
OTTAWA-CARLETON No.4

SCHEDULE			
Part	Lot	Concession	P.I.N.
1 to 3 (Inclusive)	Part of 10	2	Part of 04537-0815
4	Part of 10	2	Part of 04659-0814

PARTS 1 to 4 - SUBJECT TO EASEMENT PER INST. No. HUI2098

PLAN OF SURVEY OF
PART OF LOT 10
CONCESSION 2
GEOGRAPHIC TOWNSHIP OF HUNTLEY
CITY OF OTTAWA
FARLEY, SMITH & DENIS SURVEYING LTD.
2014

SCALE = 1:1250



METRIC NOTE

DISTANCES AND CO-ORDINATES SHOWN ON THIS PLAN ARE IN METRES AND CAN BE CONVERTED TO FEET BY DIVIDING BY 0.3048.

BEARING NOTE

BEARINGS ARE GRID AND ARE DERIVED FROM REFERENCE POINTS (A) AND (B) BY REAL TIME NETWORK OBSERVATIONS AND ARE REFERRED TO THE CENTRAL MERIDIAN 78°30'W LONGITUDE, MTM ZONE 9, N.A.D. 1983 (ORIGINAL).

DISTANCES ARE GROUND AND CAN BE CONVERTED TO GRID BY MULTIPLYING BY A COMBINED SCALE FACTOR OF 0.999963.

CO-ORDINATES WERE DERIVED FROM REAL TIME NETWORK OBSERVATIONS (SMARTNET) MTM ZONE 9, N.A.D. 1983 (ORIGINAL).		
POINT ID	NORTHING	EASTING
(A)	5019103.43	344513.69
(B)	5018986.64	344616.97

CO-ORDINATES ARE MTM ZONE 9, N.A.D. 1983 (ORIGINAL), TO URBAN ACCURACY PER SEC. 14 (2) OF O.REG. 216/10, AND CANNOT, IN THEMSELVES, BE USED TO RE-ESTABLISH CORNERS OR BOUNDARIES SHOWN ON THIS PLAN.

SURVEYOR'S CERTIFICATE

- I CERTIFY THAT:
- THIS SURVEY AND PLAN ARE CORRECT AND IN ACCORDANCE WITH THE SURVEYS ACT, THE SURVEYORS ACT, AND THE LAND TITLES ACT AND THE REGULATIONS MADE UNDER THEM.
 - THE SURVEY WAS COMPLETED ON THE 26TH DAY OF APRIL 2014.

DATE MAY 09, 2014

Ronald A. Denis
RONALD A. DENIS
ONTARIO LAND SURVEYOR

LEGEND

- # SURVEY MONUMENT FOUND
- SURVEY MONUMENT SET
- SB STANDARD IRON BAR
- IB IRON BAR
- WT WITNESS
- FENCE
- OU ORIGIN UNKNOWN
- 647, HRF S.E. & H.R. FARLEY O.L.S. JUNE 3, 1965
- 1287/1692/FSD FARLEY, SMITH & DENIS SURVEYING LTD. MARCH 29, 2005
- P1 PLAN SR-11858
- P2 SURVEY PLAN BY McROSTIE & McLEAN, O.L.S., 1962
- P3 ATTACHED TO UNREGISTERED MUNICIPAL AGREEMENT
- PLAN SR-1849
- D INST. No. NS12483 (SUBJECT LANDS)
- UP UTILITY POLE
- CW GUY WIRE
- A ARC DISTANCE
- C CHORD DISTANCE

NOTE:

UNLESS OTHERWISE NOTED ALL BEARINGS, DISTANCES AND MONUMENTS ARE PER PLAN 4R - 25451.

FARLEY, SMITH & DENIS SURVEYING LTD.

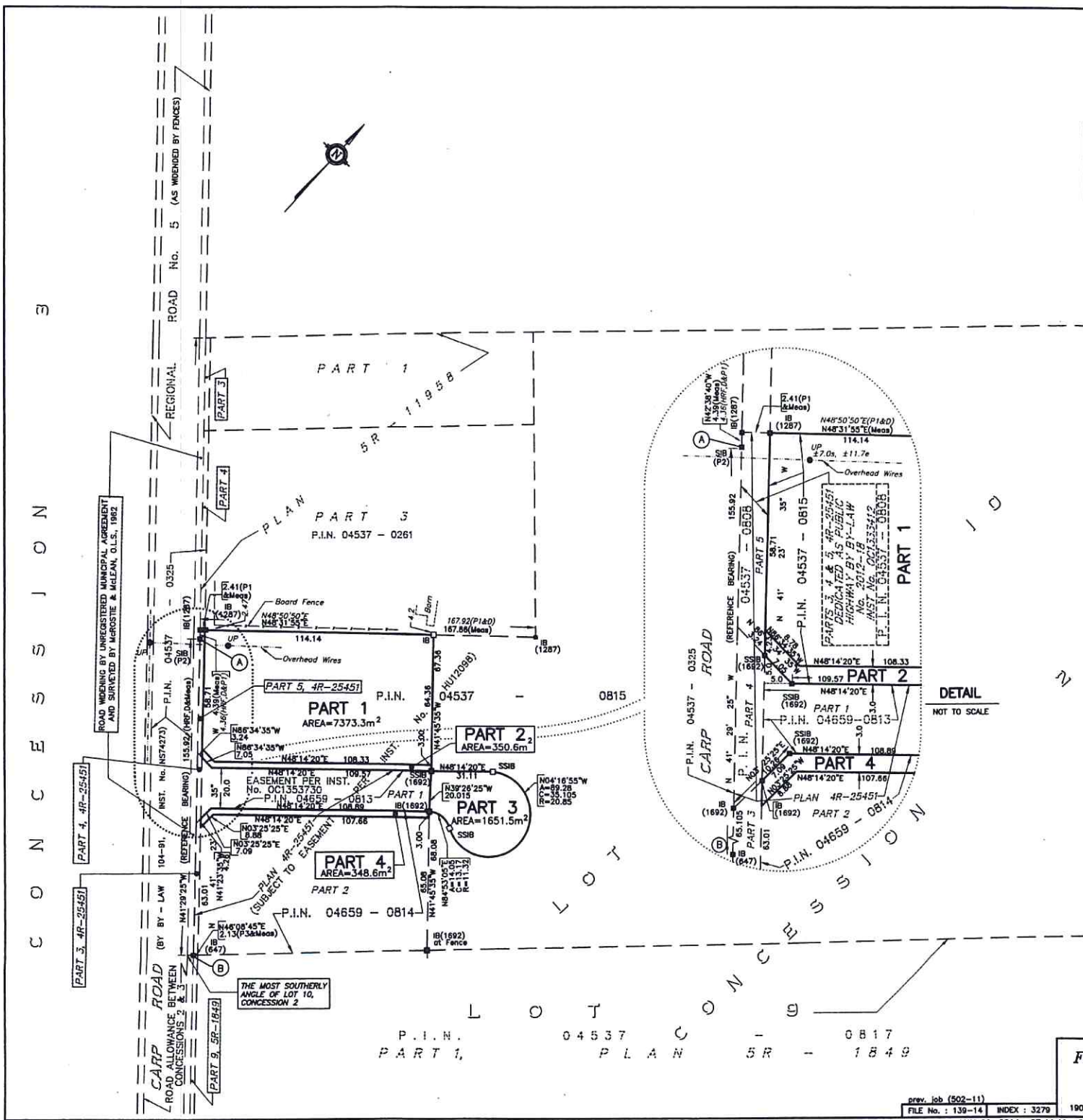
ONTARIO LAND SURVEYORS
CANADA LANDS SURVEYORS

prev. job (502-11)

FILE No.: 139-14 INDEX: 3279

190 COLONNADE ROAD, OTTAWA, ONTARIO K2E 7J5 TEL: (613) 727-8228 FAX: (613) 727-1823

MAY 09, 2014 07:44:41 CAD FILE= U:\PENNY\PLANS\2014\P139-14(502-11)_CARR-LEblanc(4R-final GPS'd).DWG



P.I.N. 04537 - 0817
PART 1, PLAN 5R - 1849